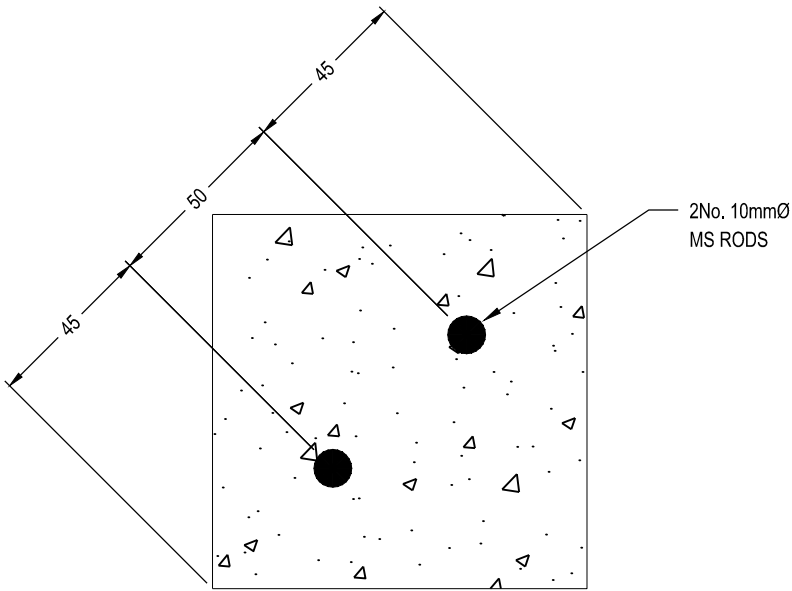


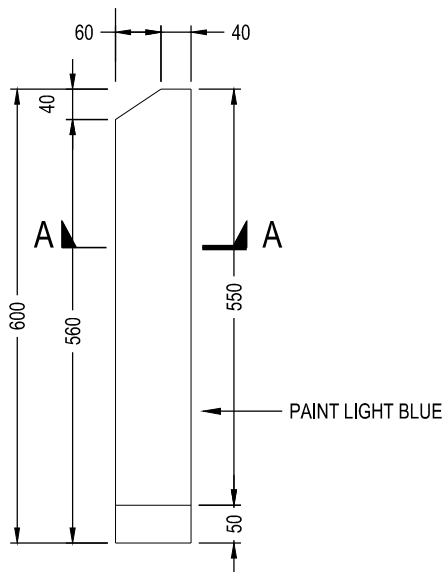
NOTES:

1. CONCRETE POSTS TO BE $F'c = 25MPa$ AT 28 DAYS MINIMUM COMPRESSIVE STRENGTH.
2. ALL MEASUREMENTS ARE IN MILLIMETRES.



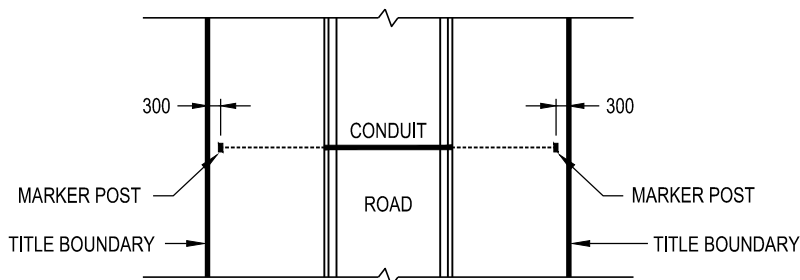
SECTION A-A

SCALE 1:2



ELEVATION

SCALE 1:10



PLACEMENT LOCATION

NOT TO SCALE



MORNINGTON
PENINSULA
Shire

STANDARD PLAN
CONCRETE MARKER POST FOR
SERVICE CONDUITS

MANAGER - INFRASTRUCTURE PROJECTS

DATE OF ISSUE
SHEET NO

10/01/2025
1 OF 1

MP803