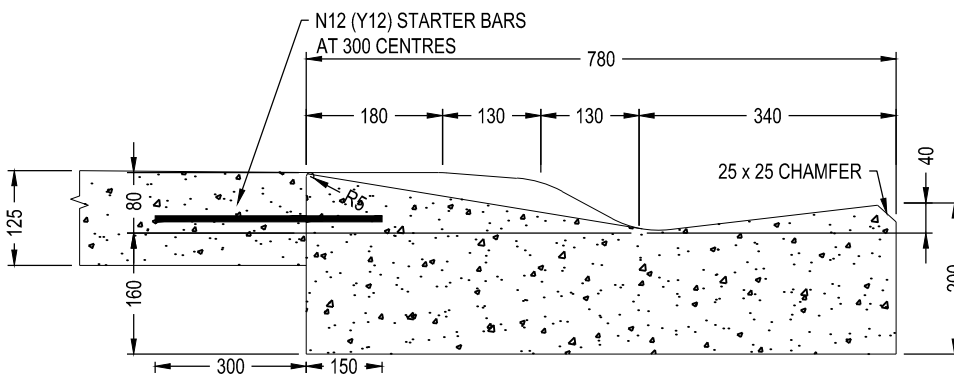


## VEHICULAR CHANNEL CROSSING FOR ROLLOVER KERB AND CHANNEL

SCALE 1:50



### SECTION A-A

SCALE 1:10

#### NOTES:

- 1 FOR BEDDING, SEE CLAUSE F4 OF THE MORNINGTON PENINSULA SHIRE SPECIFICATION.  
Link: [www.moropen.vic.gov.au/Building-Planning/Engineering/Construction-of-Roads-Drains](http://www.moropen.vic.gov.au/Building-Planning/Engineering/Construction-of-Roads-Drains)
- 2 SMOOTH TROWEL FINISH
- 3 TOOL JOINTS ONLY, NO SAW CUTS
- 4 CHANNEL OR TRAY MUST BE REMOVED FOR ALL REPLACEMENT OR REINSTATEMENT WORKS.
- 5 ALL REPLACEMENT OR REINSTATEMENT WORKS MUST BE DOWELLED INTO EXISTING KERB AND CROSSOVER USING 450MM N12 BARS, WITH 150MM DRILLED INTO EXISTING INFRASTRUCTURE AT 300MM CENTRES.
- 6 NO BULLNOSE UNLESS DIRECTED BY COUNCIL AUTHORISED OFFICER.
- 7 REFER ALSO TO MP301 FOR VEHICLE CROSSING DETAILS.
- 8 ALL MEASUREMENTS ARE IN MILLIMETRES.



MORNINGTON  
PENINSULA  
Shire

## STANDARD PLAN VEHICULAR CHANNEL CROSSING (LAYBACK) FOR ROLLOVER KERB AND CHANNEL

MANAGER - INFRASTRUCTURE PROJECTS

DATE OF ISSUE  
SHEET NO

05/12/2024  
1 OF 1

MP106