

Appendix A Township summaries

Summary information is provided for each township in this appendix.

Contents

Arthurs Seat.....	1
Balnarring	2
Balnarring Beach	3
Baxter.....	4
Bittern.....	5
Blairgowrie	6
Capel Sound	7
Crib Point	8
Dromana	9
Flinders	10
Hastings	11
McCrae	12
Merricks Beach	13
Mornington.....	14
Mount Eliza	15
Mount Martha.....	16
Point Leo.....	17
Portsea.....	18
Red Hill	19
Rosebud	20
Rye.....	21
Safety Beach	22
Shoreham	23
Somers.....	24
Somerville	25
Sorrento	26
St Andrews Beach	27
Tootgarook.....	28
Tyabb	29

Arthurs Seat

Variable	Value
Area of township (ha)	80.8
Area of canopy 2020 (ha)	54.6
Canopy cover 2020 (%)	67.5
Change in canopy cover 2011-2020	Increase of 15.6%
Heat vulnerability index (1-5, 5 most vulnerable) and township rank (1-28, 1 most vulnerable)	1 – Rank 22
2021 population and township rank (1-28, 1 most dense)	565 – Rank 27
Prioritisation rank (based on existing canopy cover and heat vulnerability index, 1-28, 1 highest priority)	Rank 29

Tree canopy cover

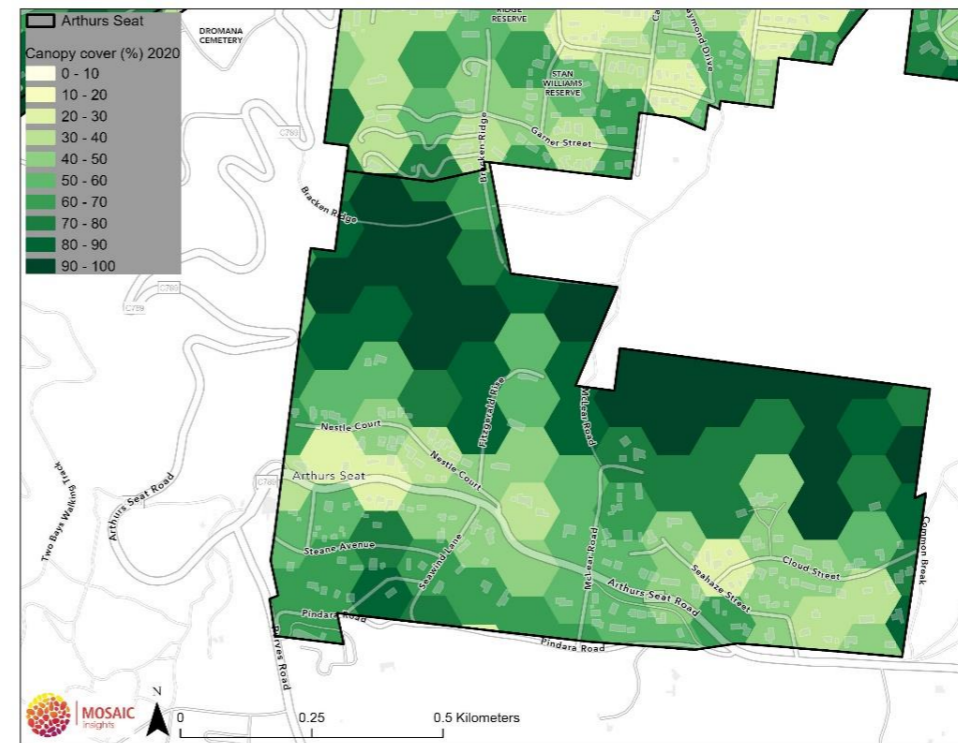


Figure 1. Arthurs Seat - Canopy cover in 2020

Heat vulnerability index

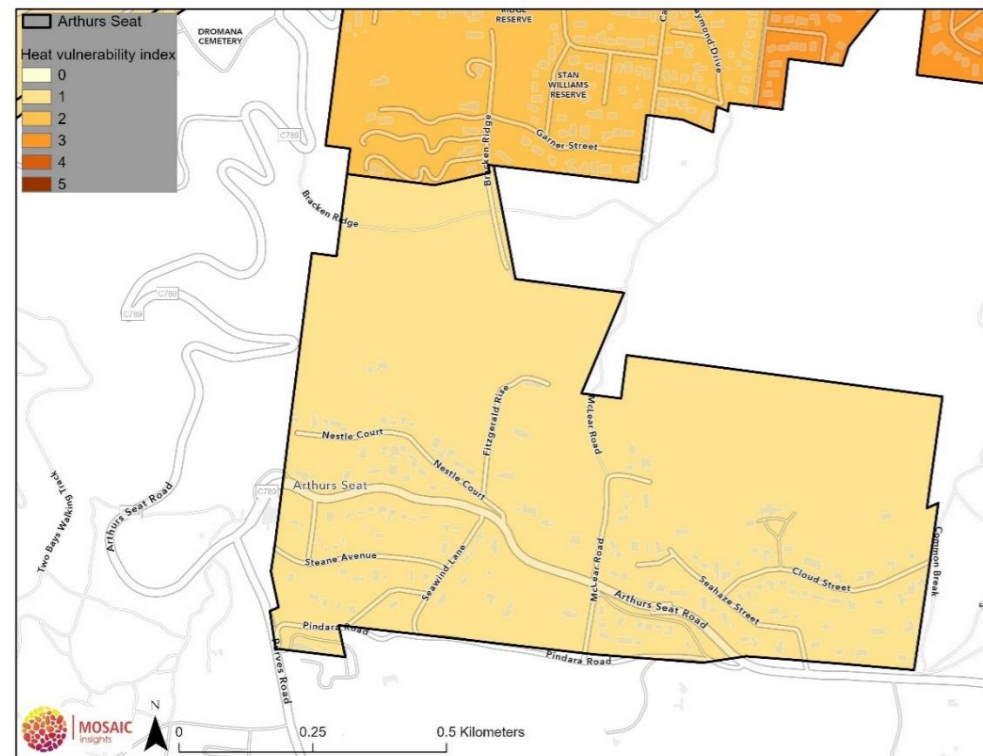


Figure 2. Arthurs Seat - Heat vulnerability index (2018)

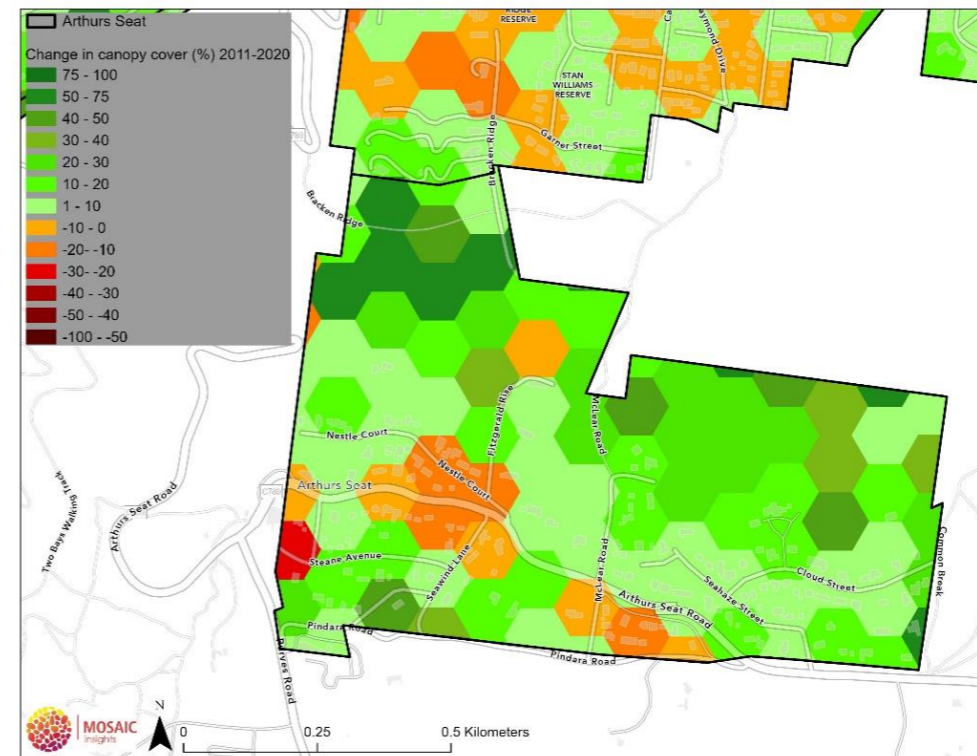


Figure 3. Arthurs Seat - Change in canopy cover between 2011 and 2020

Balnarring

Variable	Value
Area of township (ha)	153.7
Area of canopy 2020 (ha)	59.6
Canopy cover 2020 (%)	38.8
Change in canopy cover 2011-2020	Increase of 5.8%
Heat vulnerability index (1-5, 5 most vulnerable) and township rank (1-28, 1 most vulnerable)	1 – Rank 22
2021 population and township rank (1-28, 1 most dense)	2,181 – Rank 18
Prioritisation rank (based on existing canopy cover and heat vulnerability index, 1-28, 1 highest priority)	Rank 14

Tree canopy cover

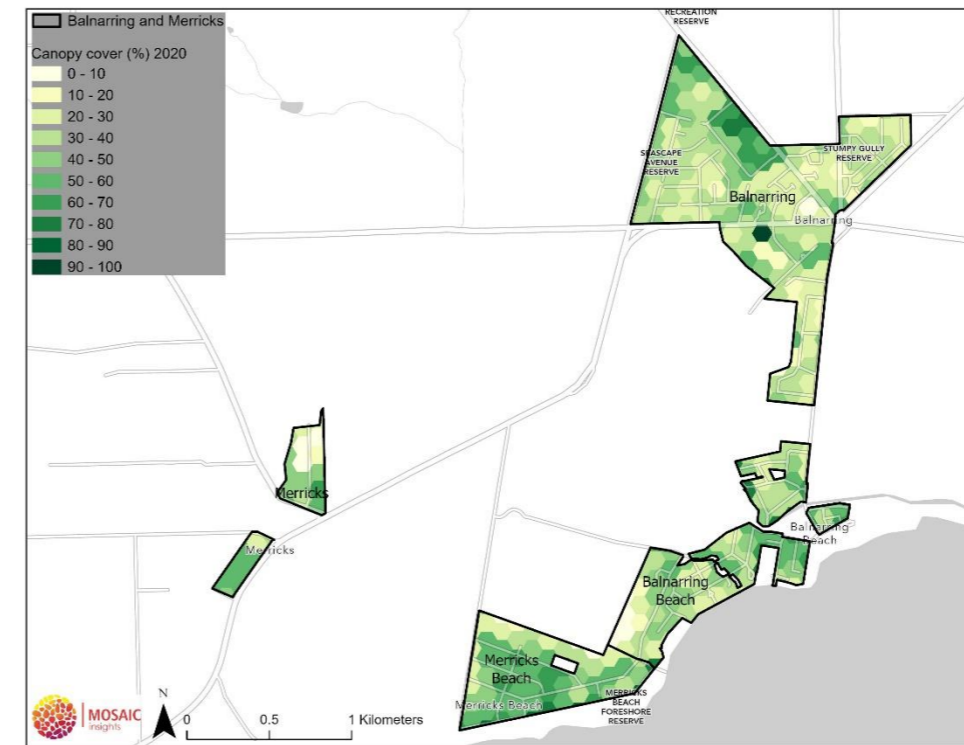


Figure 4. Balnarring - Canopy cover in 2020

Heat vulnerability index

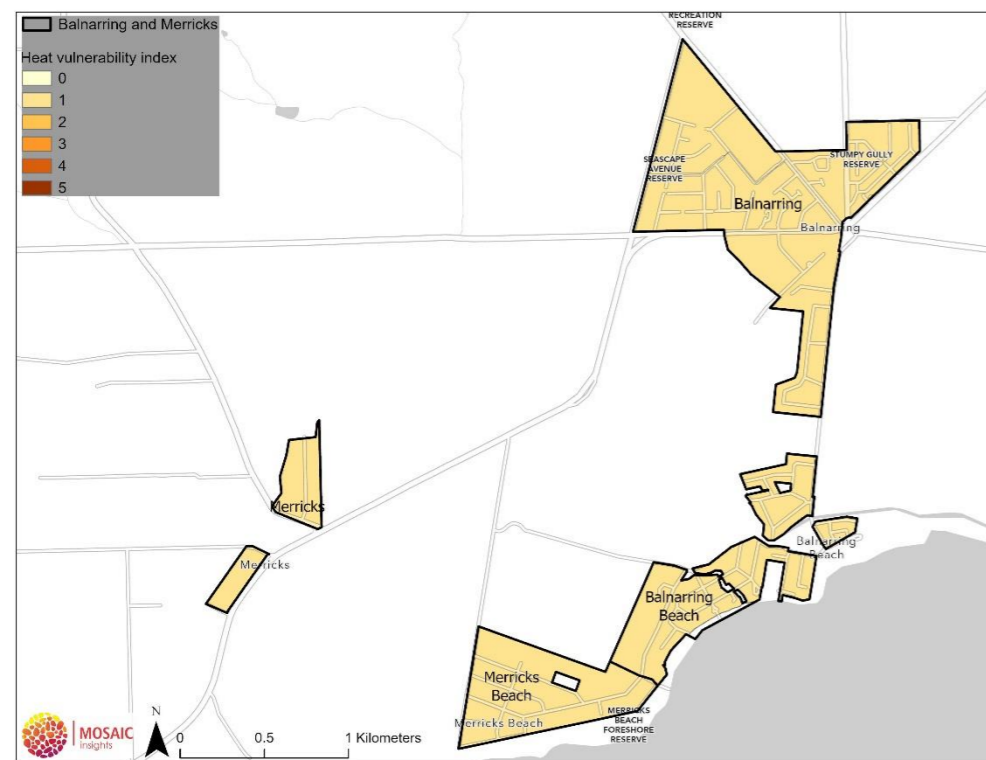


Figure 5. Balnarring - Heat vulnerability index (2018)

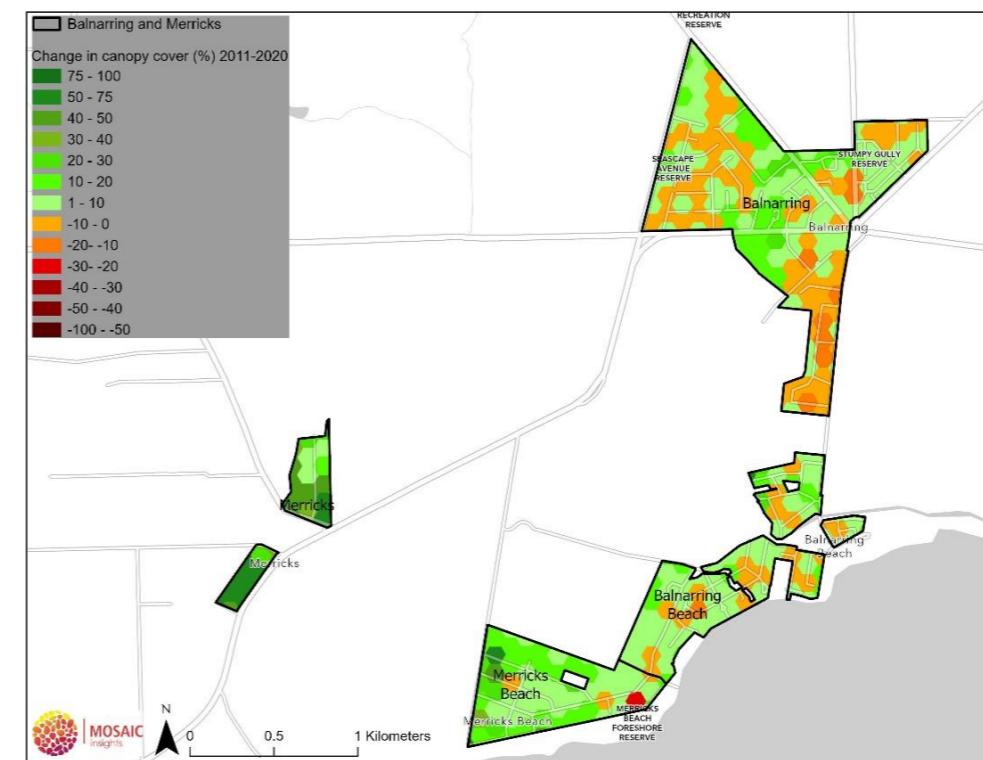


Figure 6. Balnarring - Change in canopy cover between 2011 and 2020

Balnarring Beach

Variable	Value
Area of township (ha)	60.2
Area of canopy 2020 (ha)	22.5
Canopy cover 2020 (%)	37.4
Change in canopy cover 2011-2020	Increase of 3.1%
Heat vulnerability index (1-5, 5 most vulnerable) and township rank (1-28, 1 most vulnerable)	0.98 – Rank 29
2021 population and township rank (1-28, 1 most dense)	575 – Rank 25
Prioritisation rank (based on existing canopy cover and heat vulnerability index, 1-28, 1 highest priority)	Rank 12

Tree canopy cover

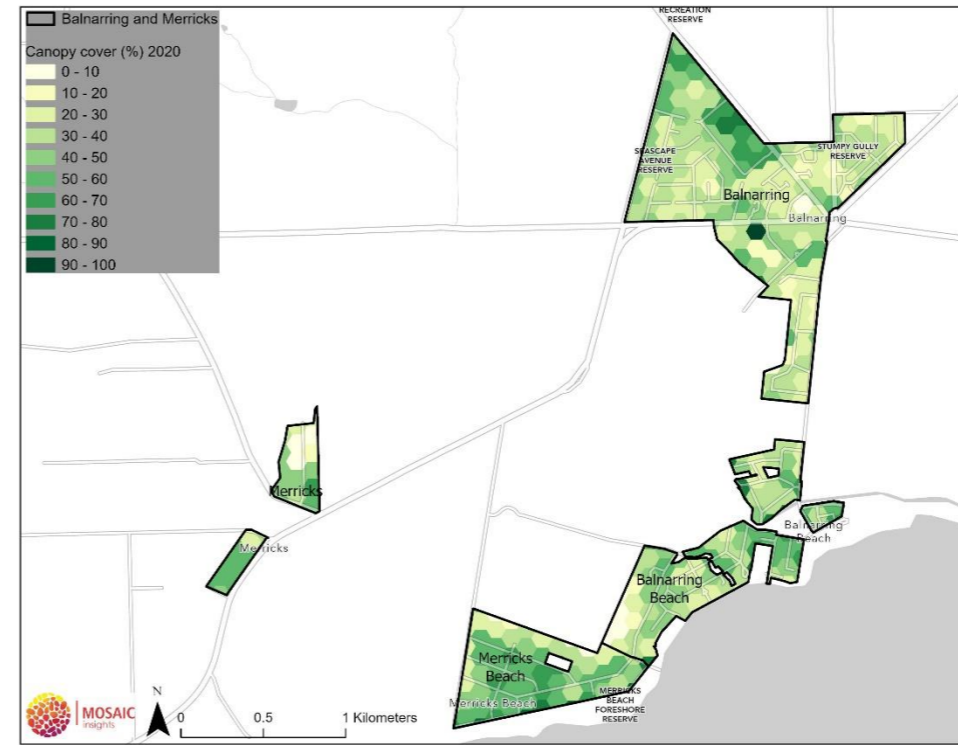


Figure 7. Balnarring Beach - Canopy cover in 2020

Heat vulnerability index

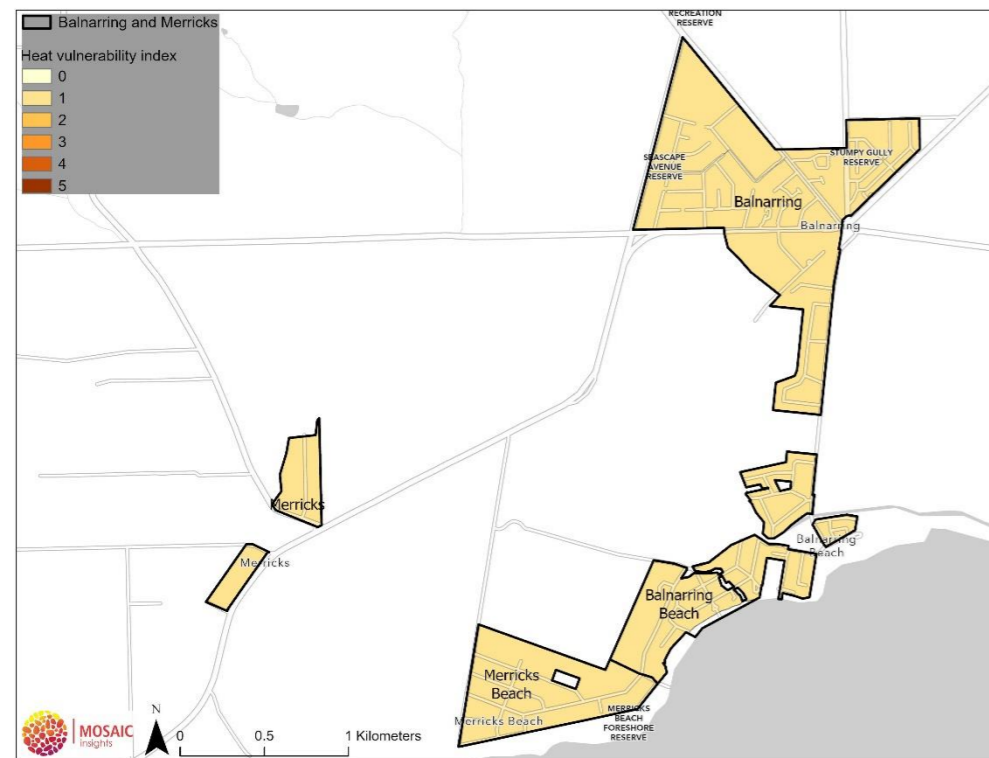


Figure 8. Balnarring Beach - Heat vulnerability index (2018)

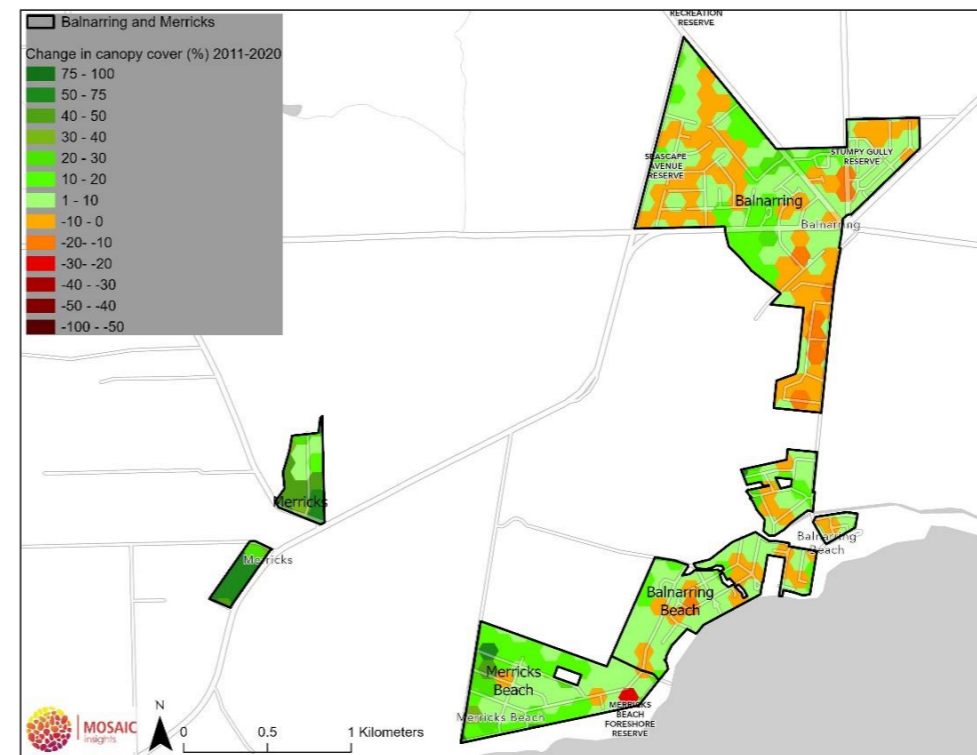


Figure 9. Balnarring Beach - Change in canopy cover between 2011 and 2020

Baxter

Variable	Value
Area of township (ha)	87.2
Area of canopy 2020 (ha)	17.3
Canopy cover 2020 (%)	19.8
Change in canopy cover 2011-2020	Increase of 6.3%
Heat vulnerability index (1-5, 5 most vulnerable) and township rank (1-28, 1 most vulnerable)	3.23 – Rank 5
2021 population and township rank (1-28, 1 most dense)	1,892 – Rank 20
Prioritisation rank (based on existing canopy cover and heat vulnerability index, 1-28, 1 highest priority)	Rank 2

Tree canopy cover



Figure 10. Baxter - Canopy cover in 2020

Heat vulnerability index

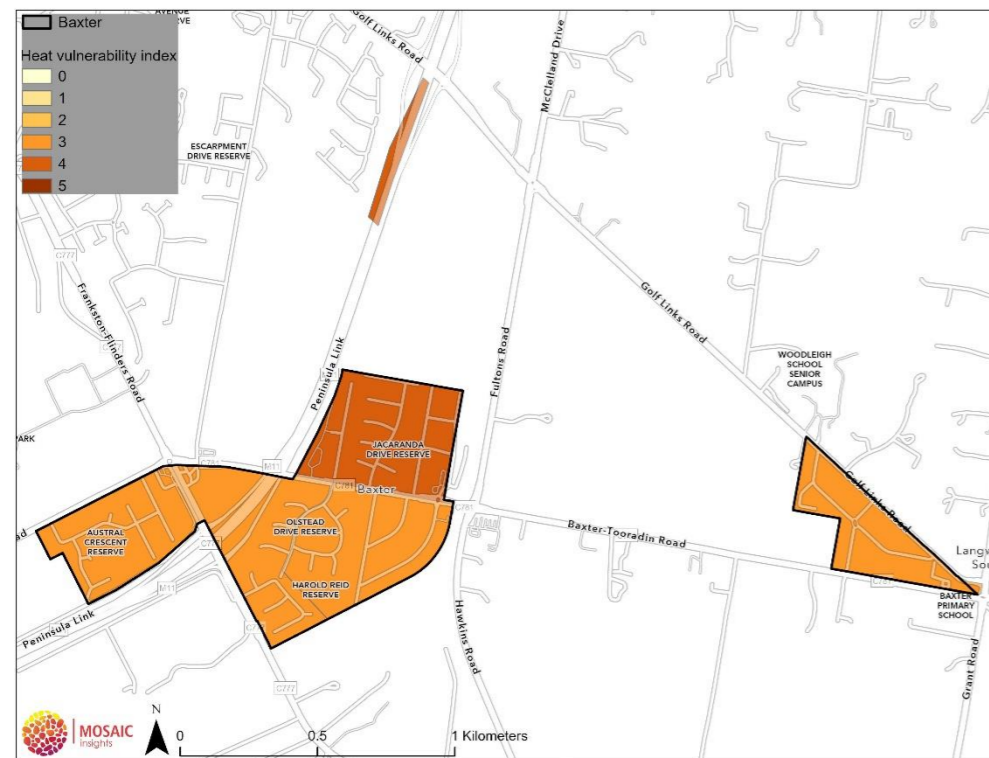


Figure 11. Baxter - Heat vulnerability index (2018)



Figure 12. Baxter - Change in canopy cover between 2011 and 2020

Bittern

Variable	Value
Area of township (ha)	1,084
Area of canopy 2020 (ha)	509.8
Canopy cover 2020 (%)	47.0
Change in canopy cover 2011-2020	Increase of 15.6%
Heat vulnerability index (1-5, 5 most vulnerable) and township rank (1-28, 1 most vulnerable)	2.84 – Rank 7
2021 population and township rank (1-28, 1 most dense)	5,247 – Rank 11
Prioritisation rank (based on existing canopy cover and heat vulnerability index, 1-28, 1 highest priority)	Rank 19

Tree canopy cover

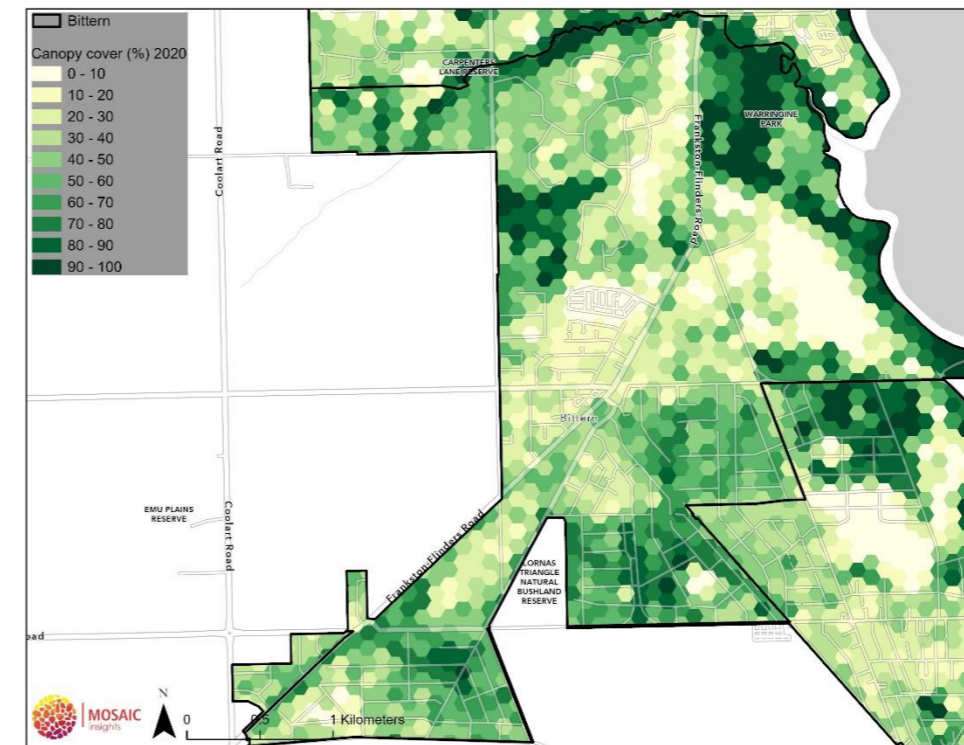


Figure 13. Bittern - Canopy cover in 2020

Heat vulnerability index

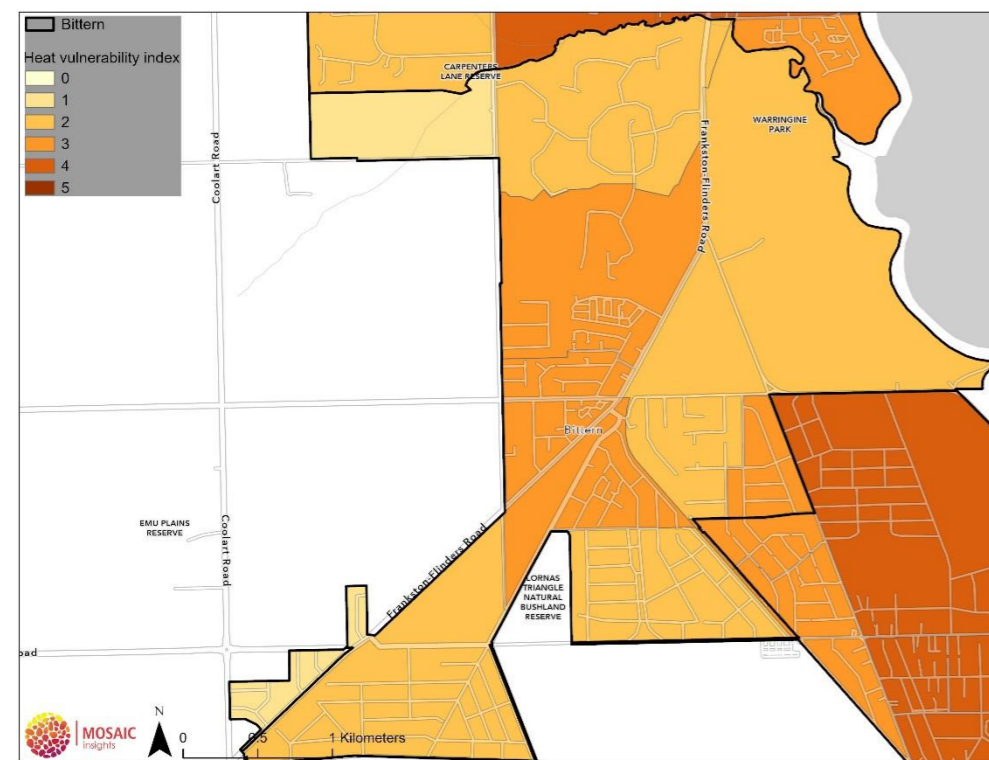


Figure 14. Bittern - Heat vulnerability index (2018)

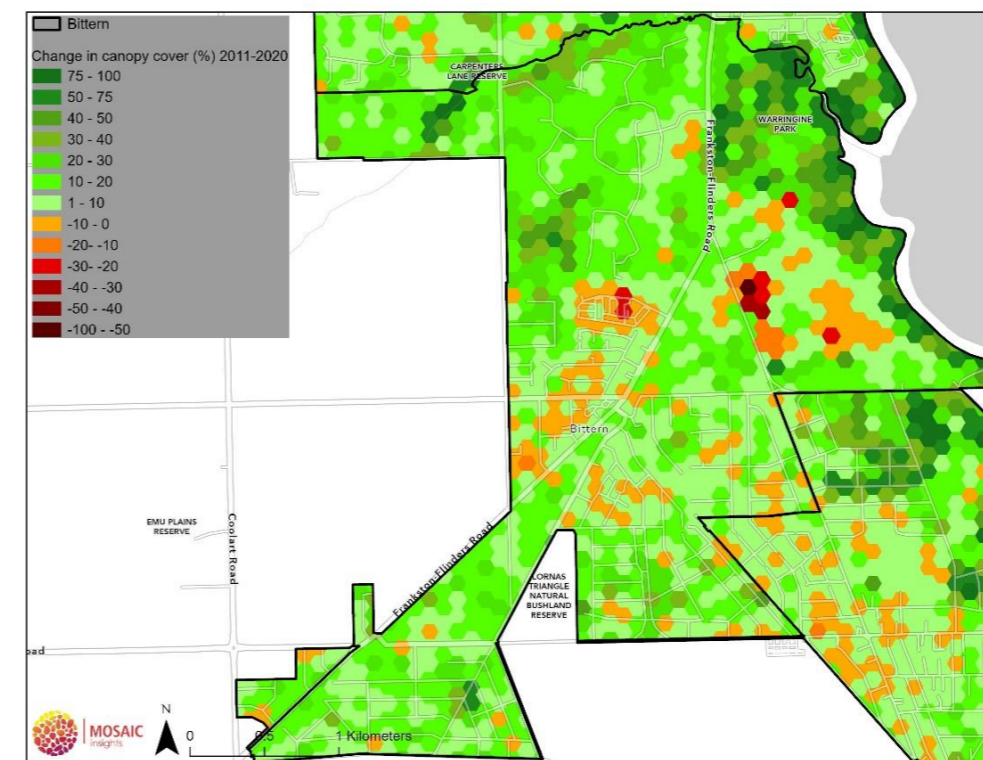


Figure 15. Bittern - Change in canopy cover between 2011 and 2020

Blairgowrie

Variable	Value
Area of township (ha)	617.9
Area of canopy 2020 (ha)	330.4
Canopy cover 2020 (%)	53.5
Change in canopy cover 2011-2020	Increase of 9.6%
Heat vulnerability index (1-5, 5 most vulnerable) and township rank (1-28, 1 most vulnerable)	1.30 – Rank 19
2021 population and township rank (1-28, 1 most dense)	2,967 – Rank 16
Prioritisation rank (based on existing canopy cover and heat vulnerability index, 1-28, 1 highest priority)	Rank 25

Tree canopy cover

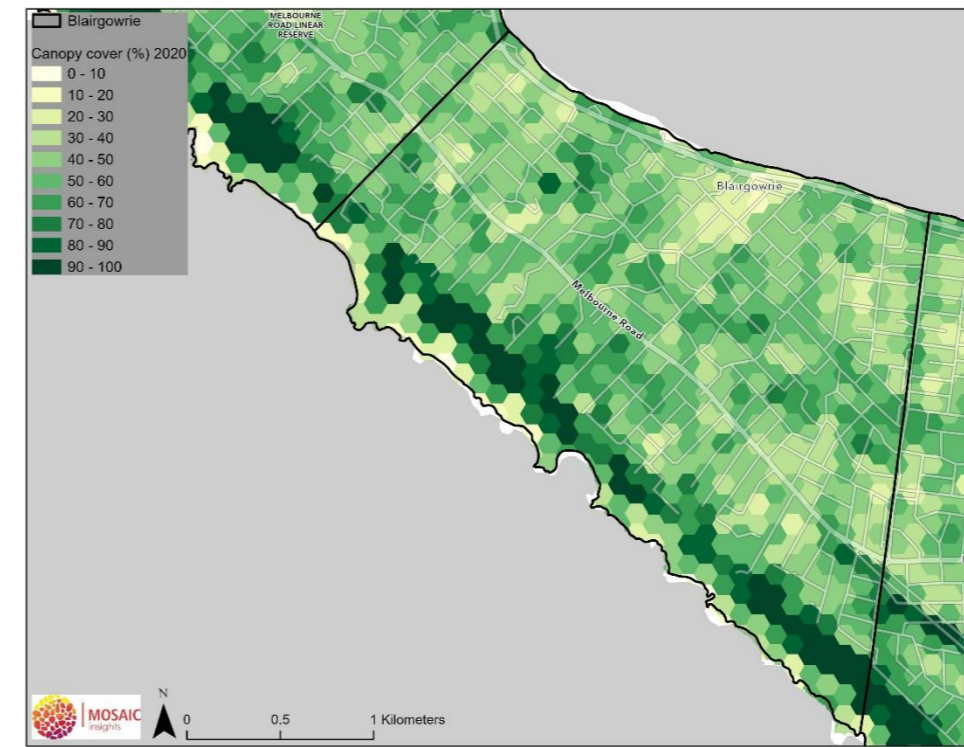


Figure 16. Blairgowrie - Canopy cover in 2020

Heat vulnerability index

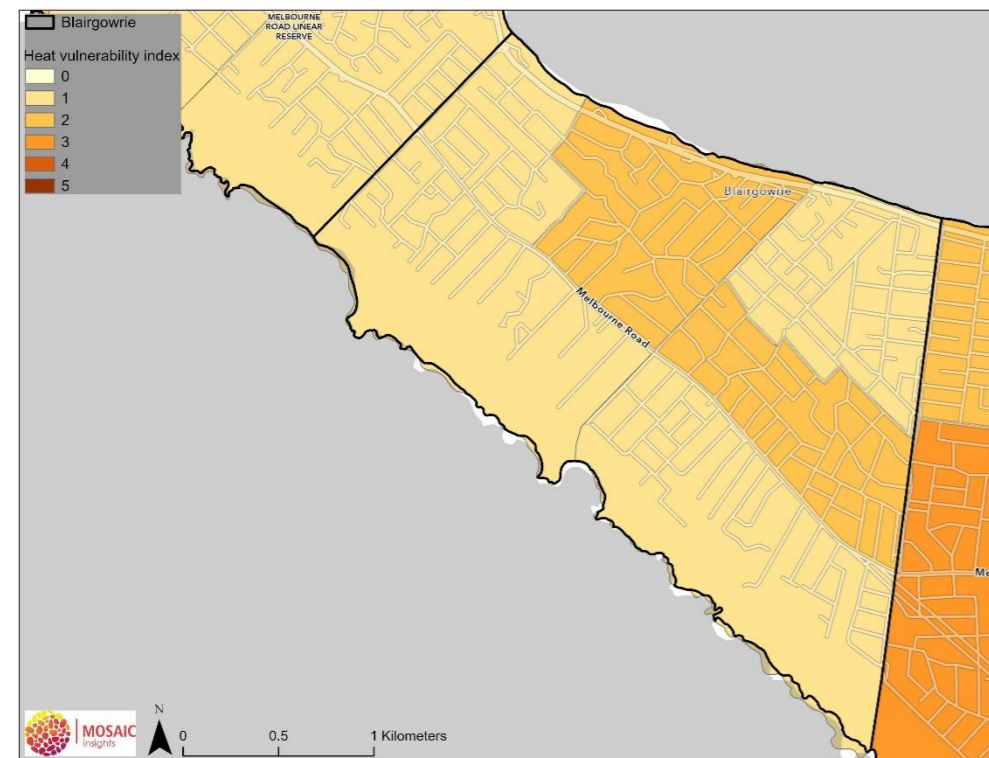


Figure 17. Blairgowrie - Heat vulnerability index (2018)

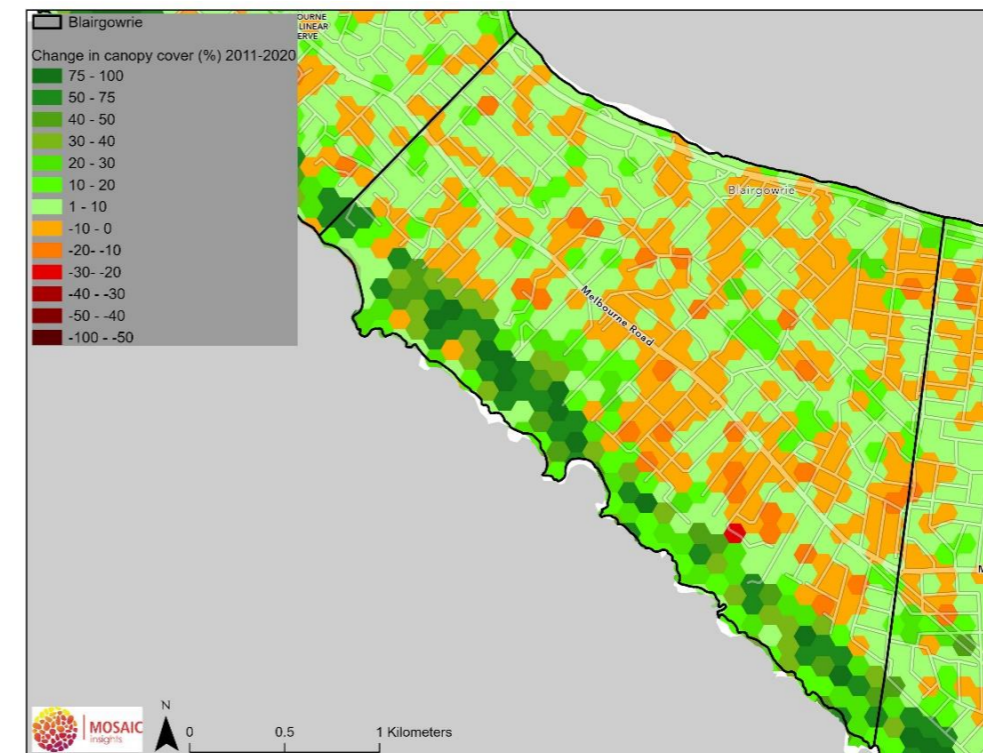


Figure 18. Blairgowrie - Change in canopy cover between 2011 and 2020

Capel Sound

Variable	Value
Area of township (ha)	465.8
Area of canopy 2020 (ha)	136.4
Canopy cover 2020 (%)	29.3
Change in canopy cover 2011-2020	Increase of 7.5%
Heat vulnerability index (1-5, 5 most vulnerable) and township rank (1-28, 1 most vulnerable)	3.97 – Rank 1
2021 population and township rank (1-28, 1 most dense)	5,728 – Rank 10
Prioritisation rank (based on existing canopy cover and heat vulnerability index, 1-28, 1 highest priority)	Rank 5

Tree canopy cover

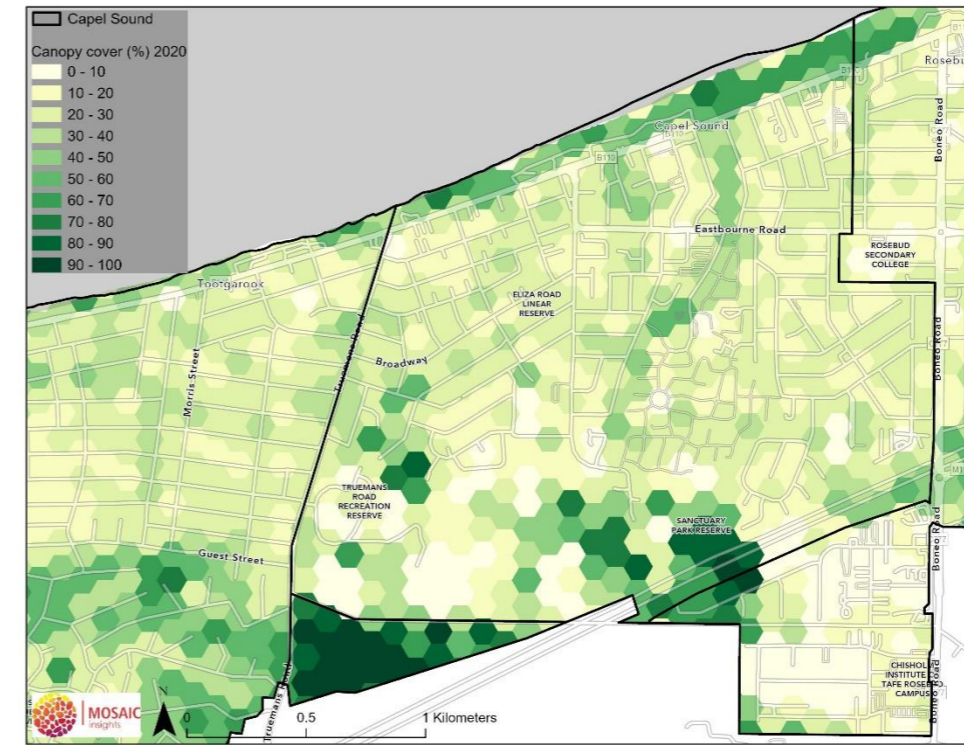


Figure 19. Capel Sound - Canopy cover in 2020

Heat vulnerability index

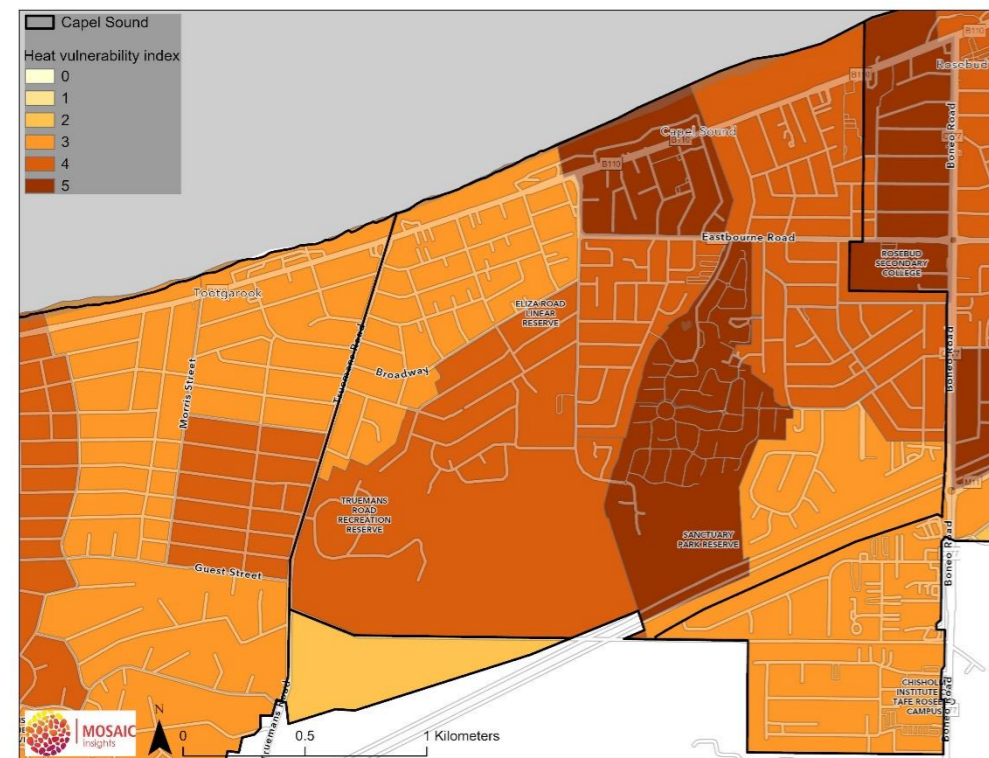


Figure 20. Capel Sound - Heat vulnerability index (2018)

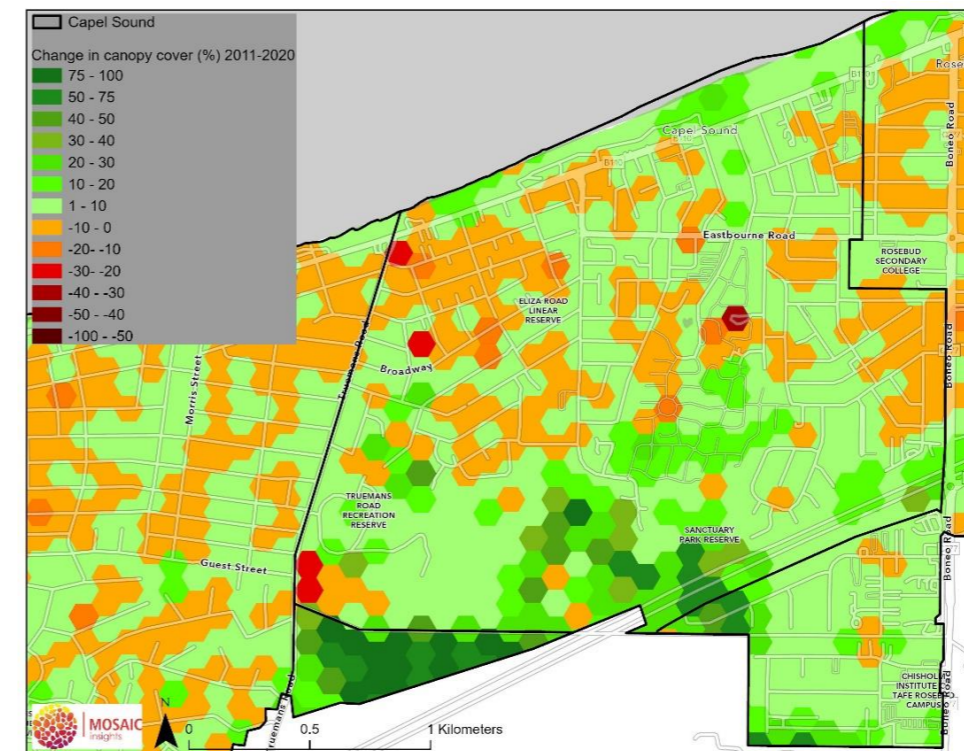


Figure 21. Capel Sound - Change in canopy cover between 2011 and 2020

Crib Point

Variable	Value
Area of township (ha)	601.3
Area of canopy 2020 (ha)	299.2
Canopy cover 2020 (%)	49.8
Change in canopy cover 2011-2020	Increase of 19.9%
Heat vulnerability index (1-5, 5 most vulnerable) and township rank (1-28, 1 most vulnerable)	3.88 – Rank 2
2021 population and township rank (1-28, 1 most dense)	4,757 – Rank 12
Prioritisation rank (based on existing canopy cover and heat vulnerability index, 1-28, 1 highest priority)	Rank 23

Tree canopy cover

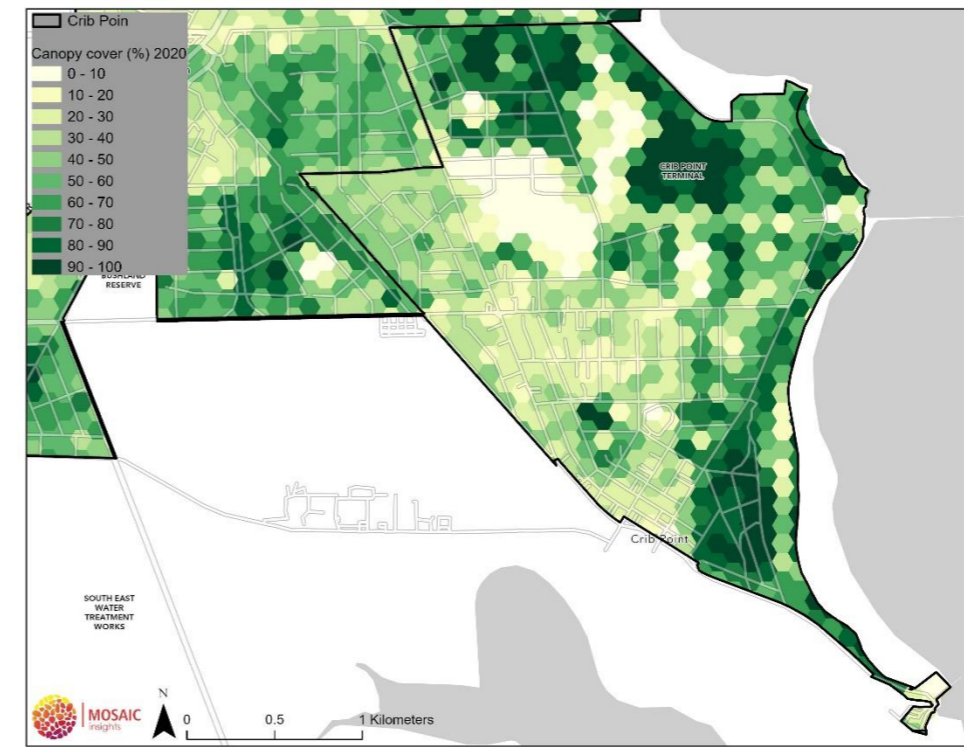


Figure 22. Crib Point - Canopy cover in 2020

Heat vulnerability index

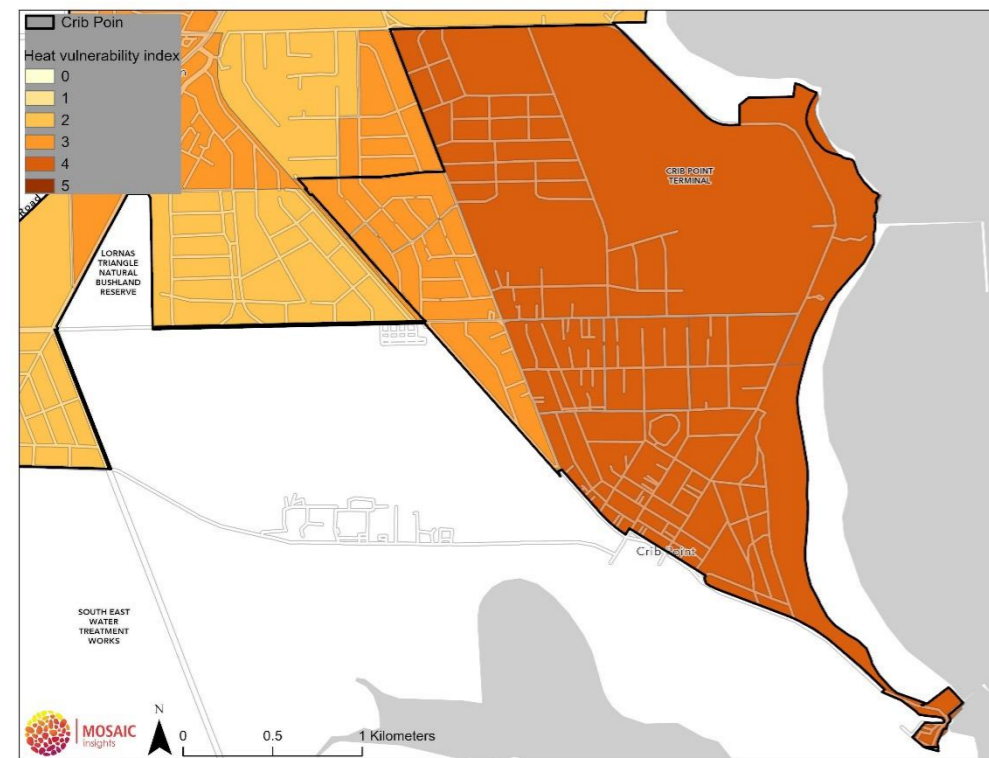


Figure 23. Crib Point - Heat vulnerability index (2018)

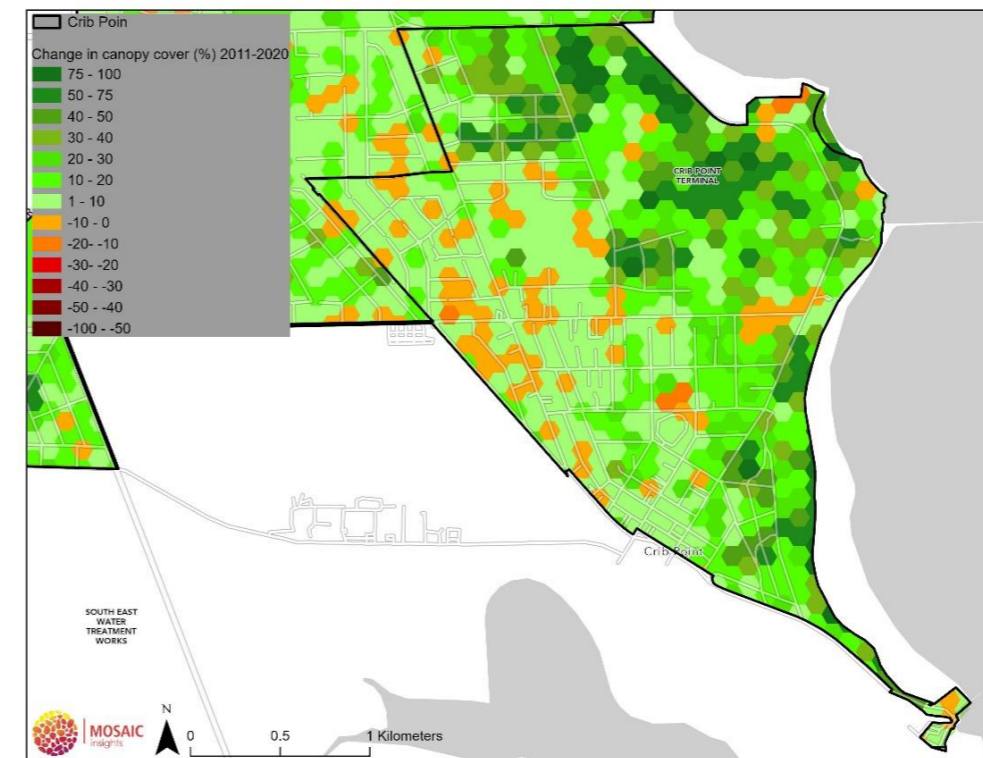


Figure 24. Crib Point - Change in canopy cover between 2011 and 2020

Dromana

Variable	Value
Area of township (ha)	617.5
Area of canopy 2020 (ha)	177.6
Canopy cover 2020 (%)	28.8
Change in canopy cover 2011-2020	Increase of 1.9%
Heat vulnerability index (1-5, 5 most vulnerable) and township rank (1-28, 1 most vulnerable)	2.7 – Rank 10
2021 population and township rank (1-28, 1 most dense)	7,056 – Rank 8
Prioritisation rank (based on existing canopy cover and heat vulnerability index, 1-28, 1 highest priority)	Rank 4

Tree canopy cover

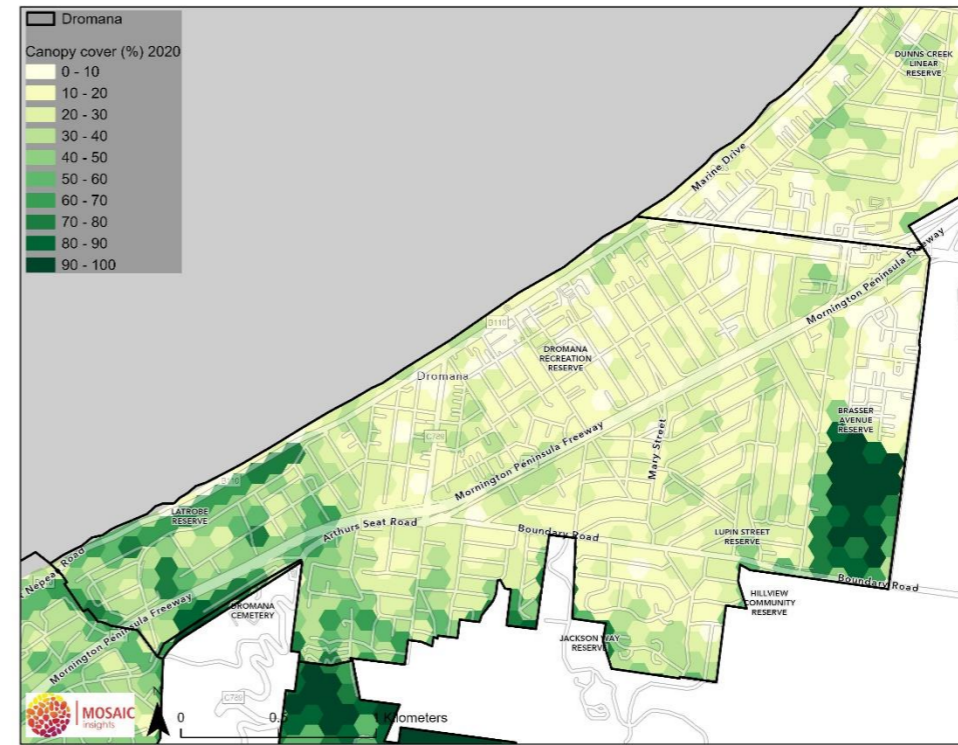


Figure 25. Dromana - Canopy cover in 2020

Heat vulnerability index

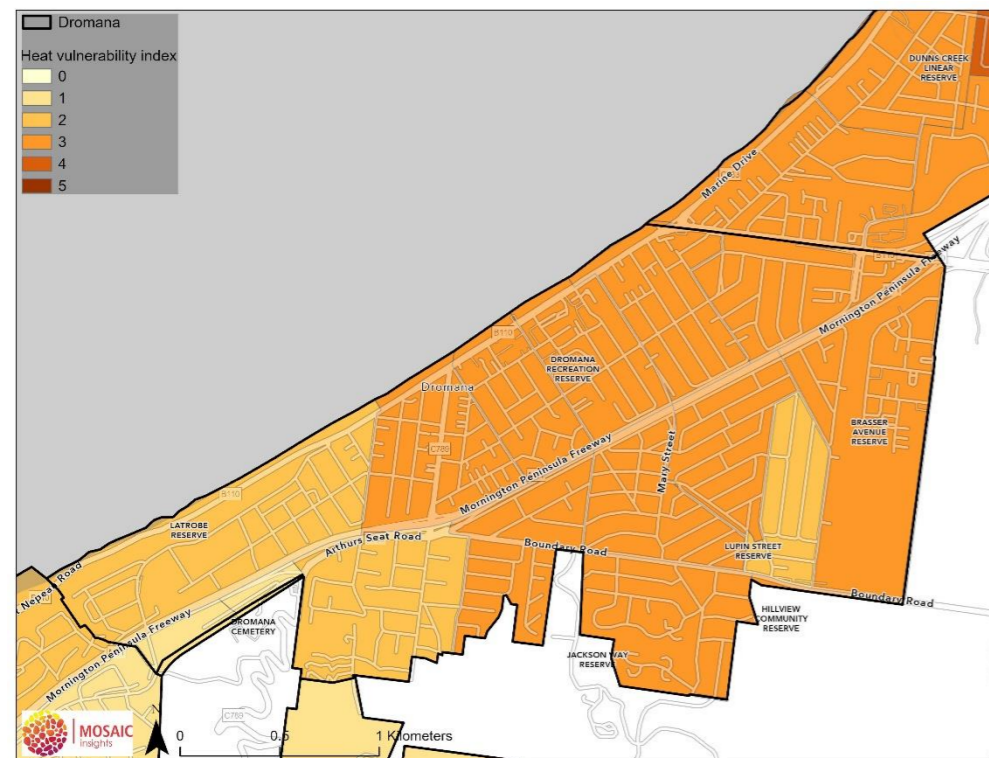


Figure 26. Dromana - Heat vulnerability index (2018)

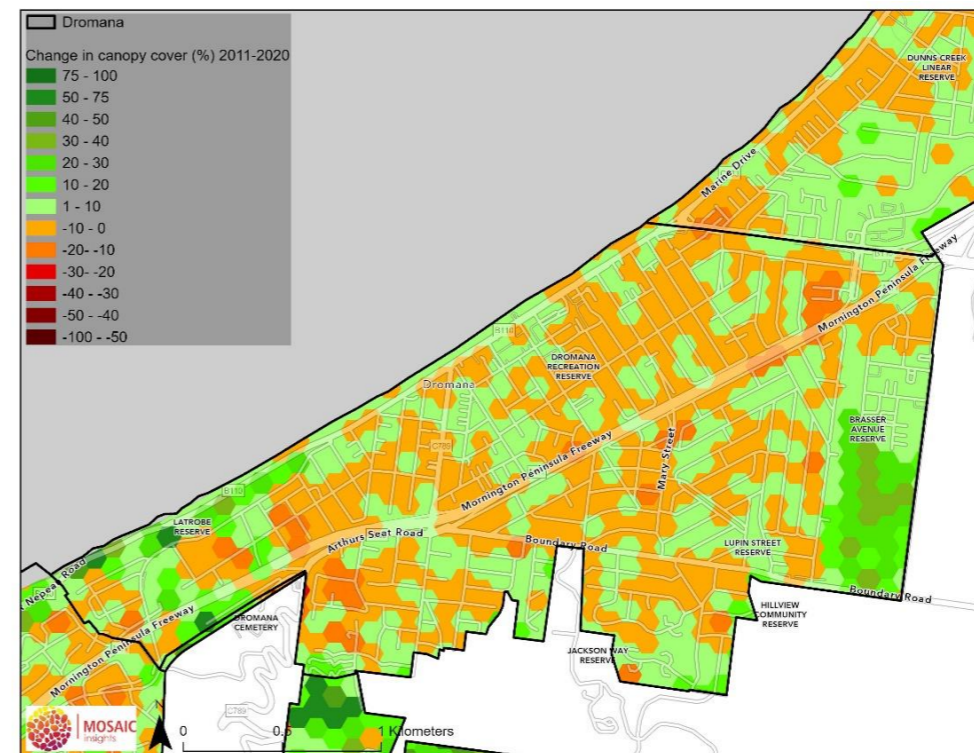


Figure 27. Dromana - Change in canopy cover between 2011 and 2020

Flinders

Variable	Value
Area of township (ha)	292.6
Area of canopy 2020 (ha)	126.8
Canopy cover 2020 (%)	43.3
Change in canopy cover 2011-2020	Increase of 9.4%
Heat vulnerability index (1-5, 5 most vulnerable) and township rank (1-28, 1 most vulnerable)	1 – Rank 22
2021 population and township rank (1-28, 1 most dense)	916 – Rank 24
Prioritisation rank (based on existing canopy cover and heat vulnerability index, 1-28, 1 highest priority)	Rank 17

Tree canopy cover

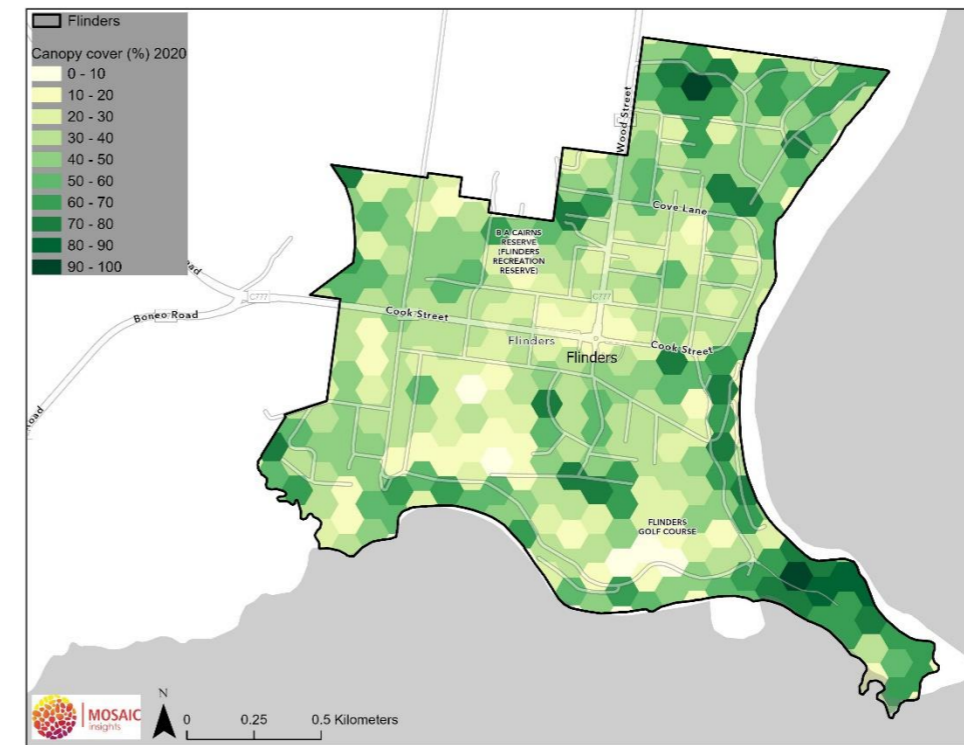


Figure 28. Flinders - Canopy cover in 2020

Heat vulnerability index

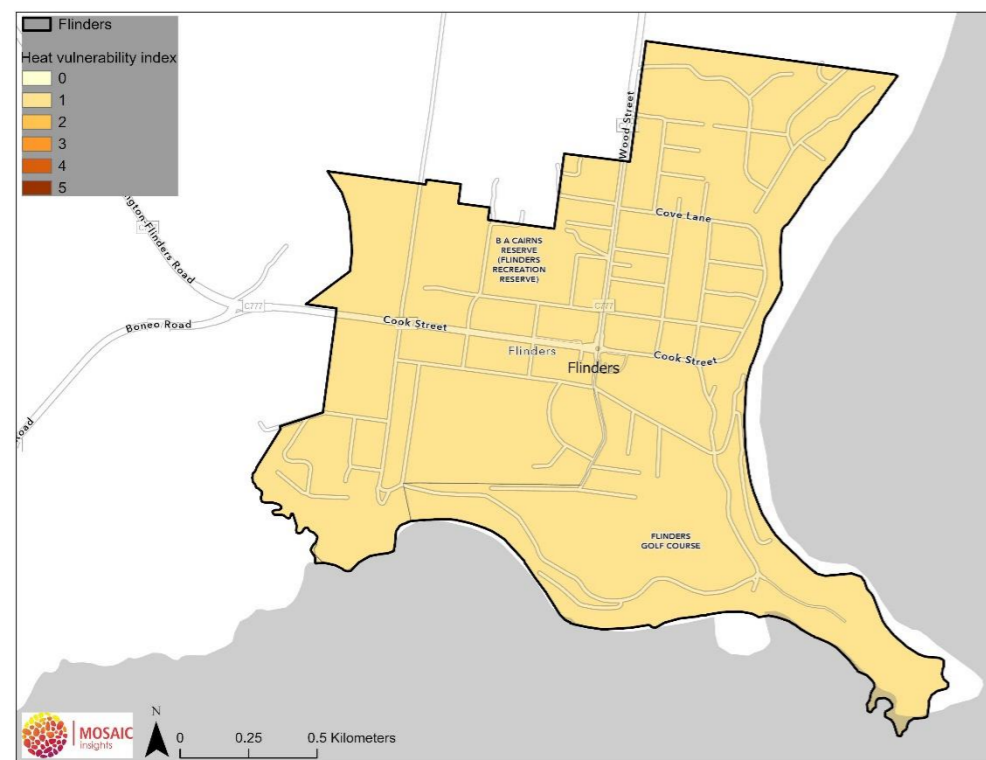


Figure 29. Flinders - Heat vulnerability index (2018)

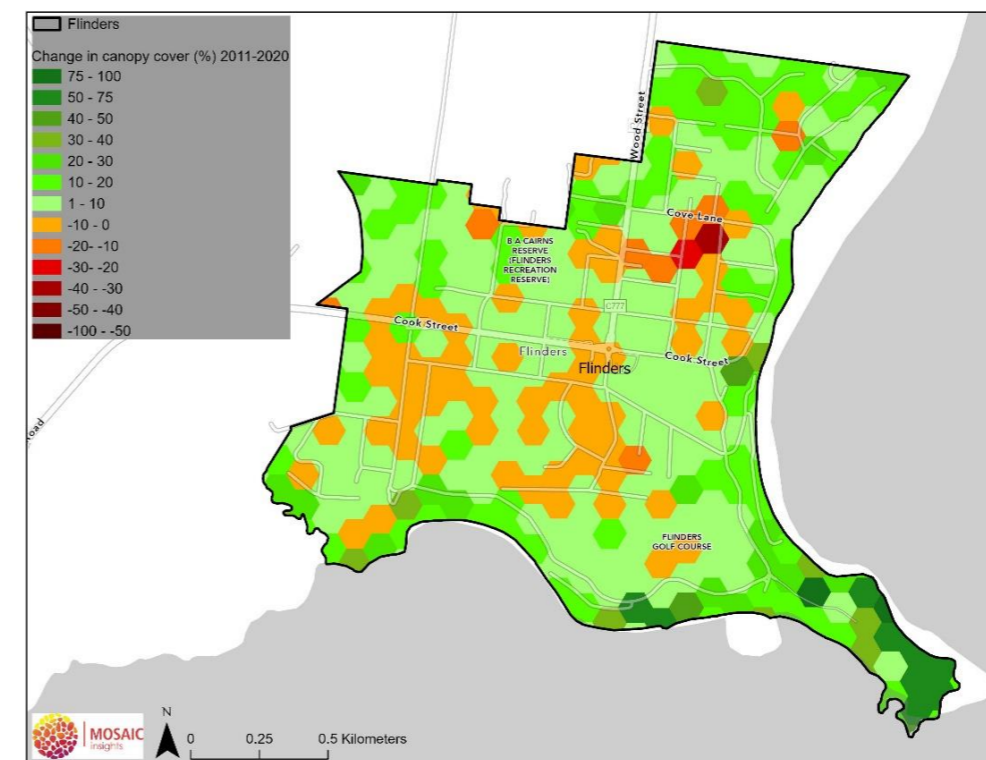


Figure 30. Flinders - Change in canopy cover between 2011 and 2020

Hastings

Variable	Value
Area of township (ha)	1,906.7
Area of canopy 2020 (ha)	625.4
Canopy cover 2020 (%)	32.8
Change in canopy cover 2011-2020	Increase of 13.6%
Heat vulnerability index (1-5, 5 most vulnerable) and township rank (1-28, 1 most vulnerable)	3.13 – Rank 6
2021 population and township rank (1-28, 1 most dense)	10,666 – Rank 6
Prioritisation rank (based on existing canopy cover and heat vulnerability index, 1-28, 1 highest priority)	Rank 8

Tree canopy cover

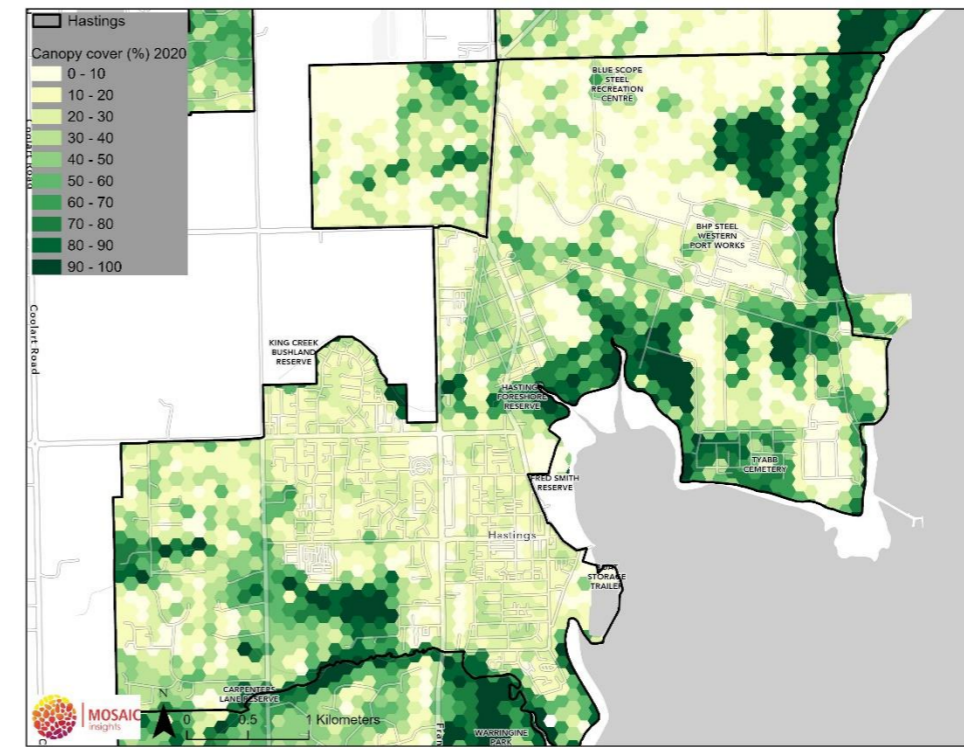


Figure 31. Hastings - Canopy cover in 2020

Heat vulnerability index

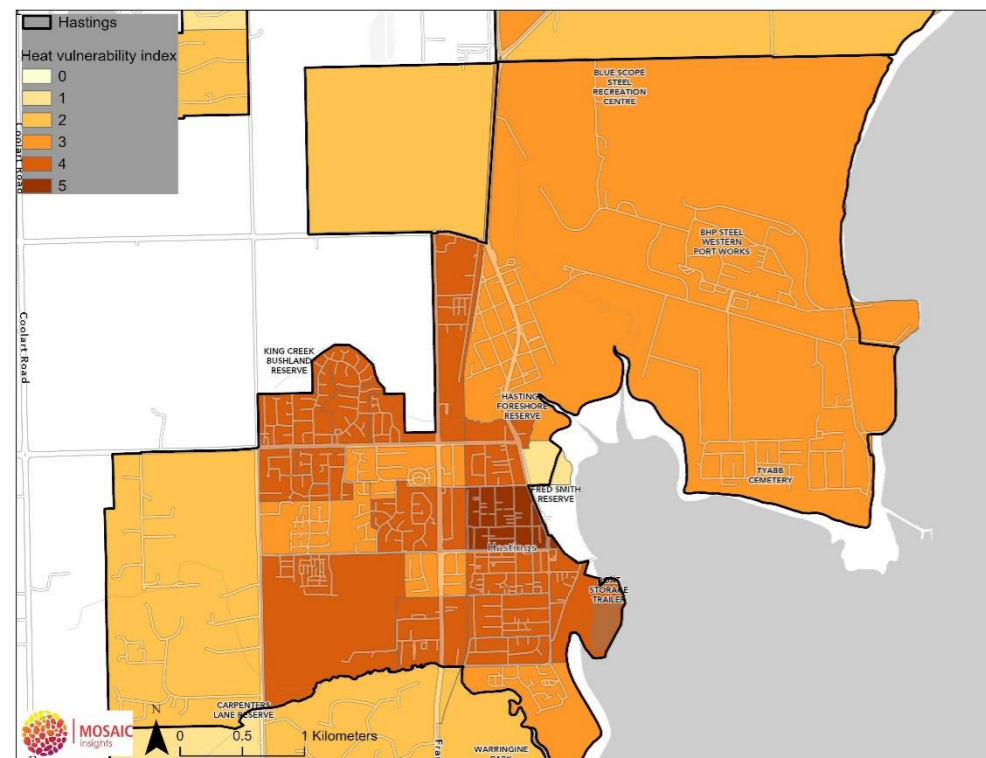


Figure 32. Hastings - Heat vulnerability index (2018)

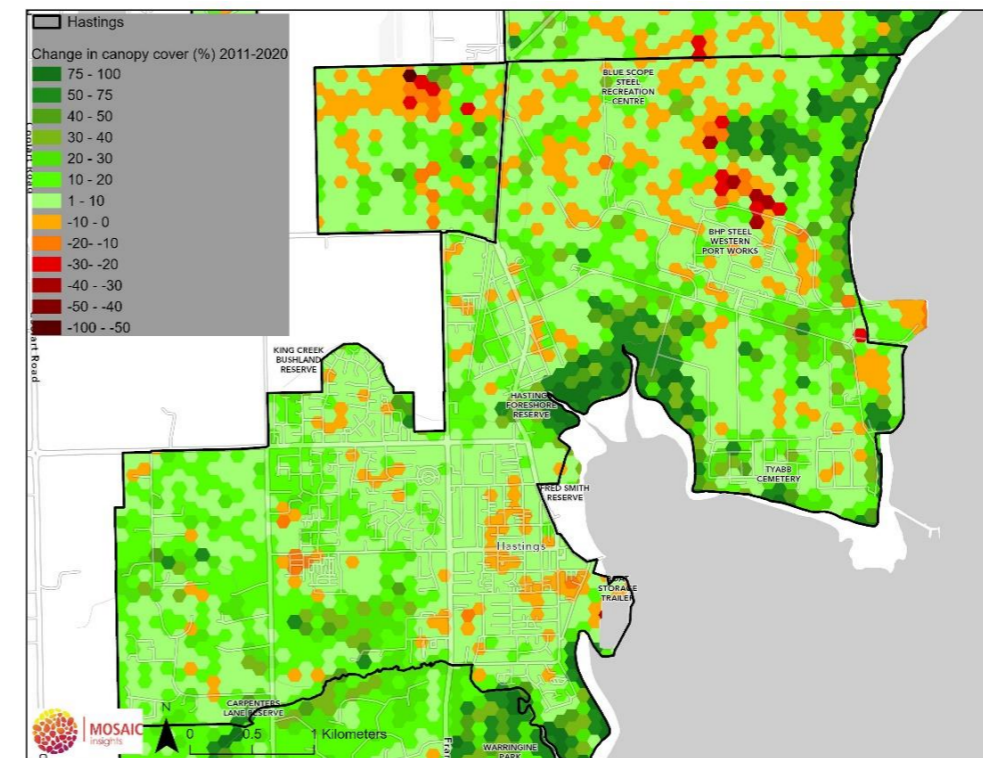


Figure 33. Hastings - Change in canopy cover between 2011 and 2020

McCrae

Variable	Value
Area of township (ha)	343.8
Area of canopy 2020 (ha)	132.5
Canopy cover 2020 (%)	38.5
Change in canopy cover 2011-2020	Increase of 1.2%
Heat vulnerability index (1-5, 5 most vulnerable) and township rank (1-28, 1 most vulnerable)	1.99 – Rank 13
2021 population and township rank (1-28, 1 most dense)	3,970 – Rank 13
Prioritisation rank (based on existing canopy cover and heat vulnerability index, 1-28, 1 highest priority)	Rank 13

Tree canopy cover

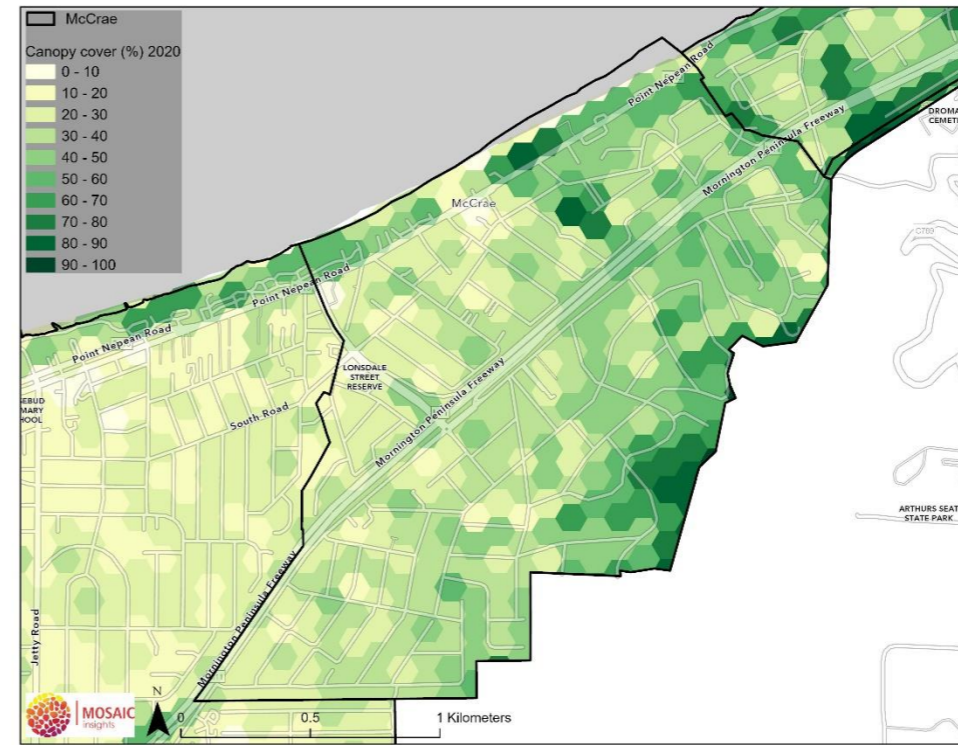


Figure 34. McCrae - Canopy cover in 2020

Heat vulnerability index

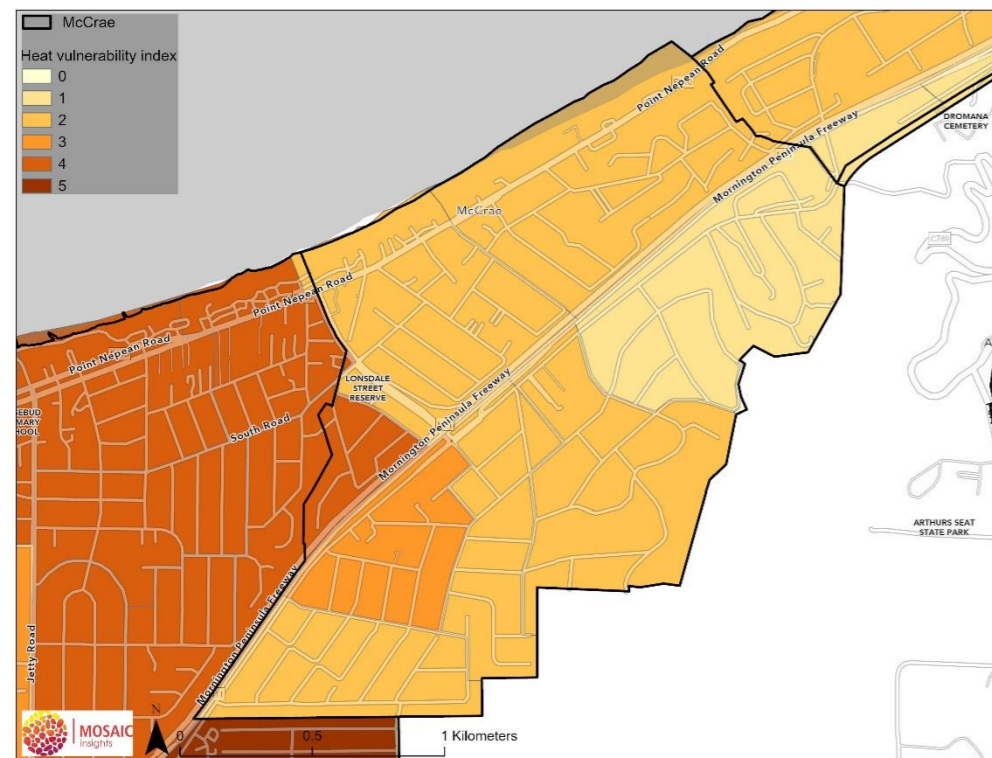


Figure 35. McCrae - Heat vulnerability index (2018)

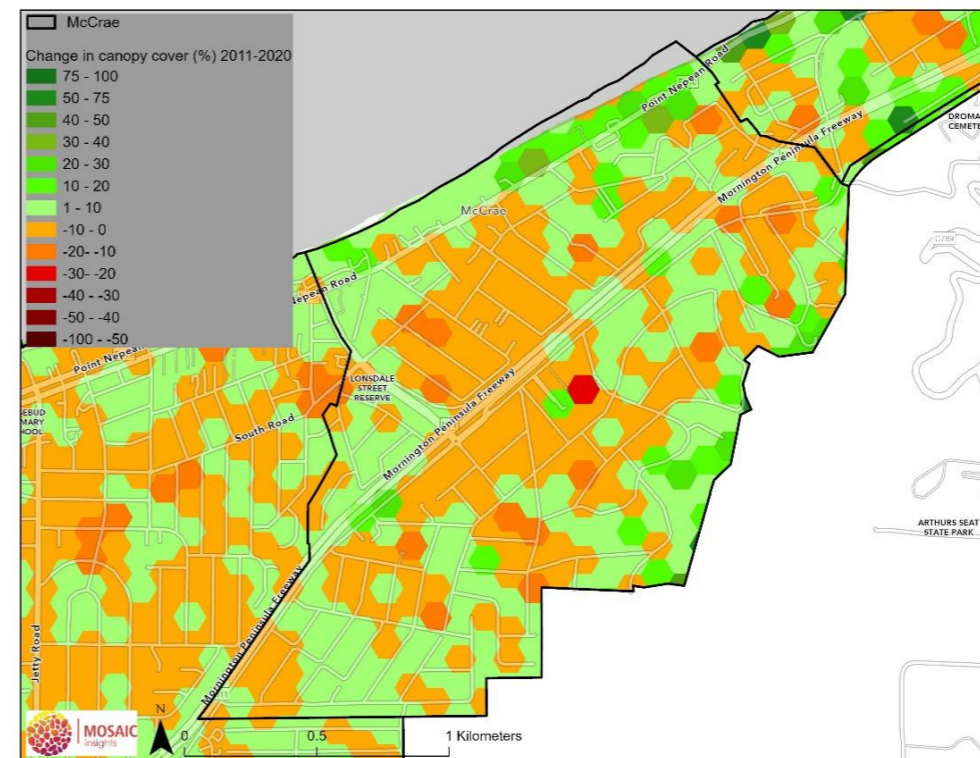


Figure 36. McCrae - Change in canopy cover between 2011 and 2020

Merricks Beach

Variable	Value
Area of township (ha)	46.6
Area of canopy 2020 (ha)	22
Canopy cover 2020 (%)	47.2
Change in canopy cover 2011-2020	Increase of 12.9%
Heat vulnerability index (1-5, 5 most vulnerable) and township rank (1-28, 1 most vulnerable)	1 – Rank 22
2021 population and township rank (1-28, 1 most dense)	284 – Rank 28
Prioritisation rank (based on existing canopy cover and heat vulnerability index, 1-28, 1 highest priority)	Rank 21

Tree canopy cover

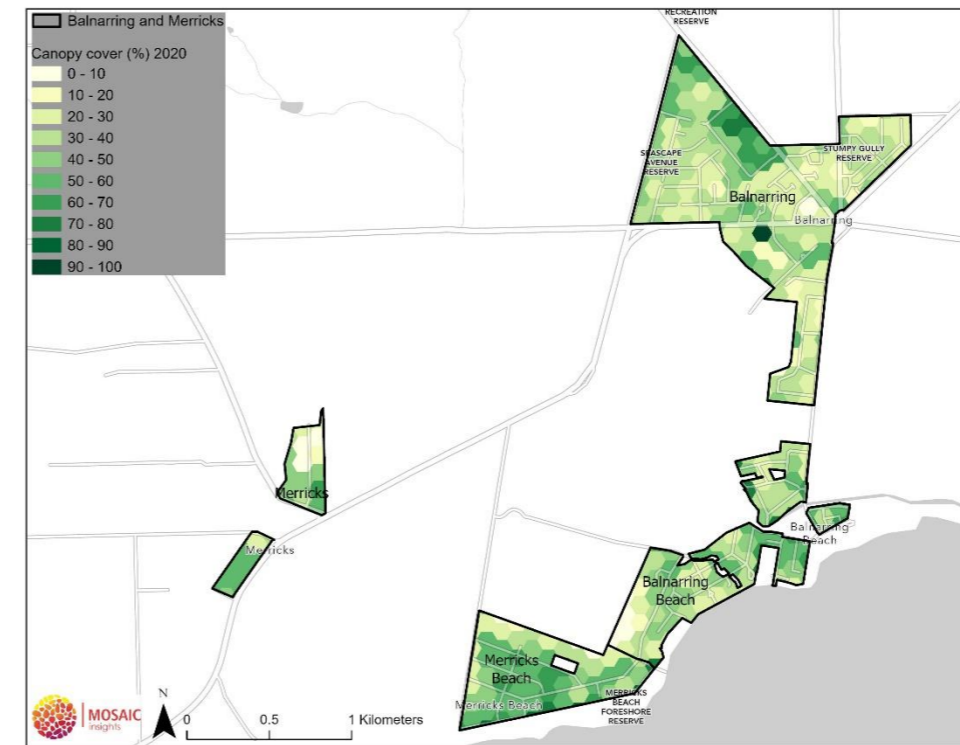


Figure 37. Merricks Beach - Canopy cover in 2020

Heat vulnerability index

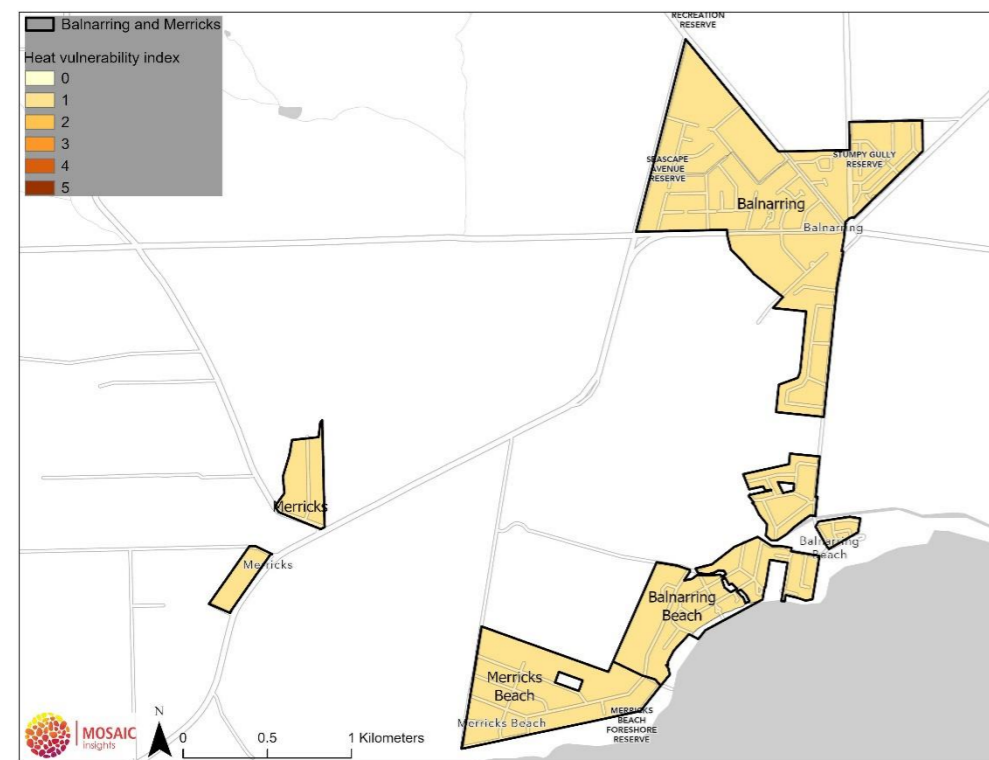


Figure 38. Merricks Beach - Heat vulnerability index (2018)

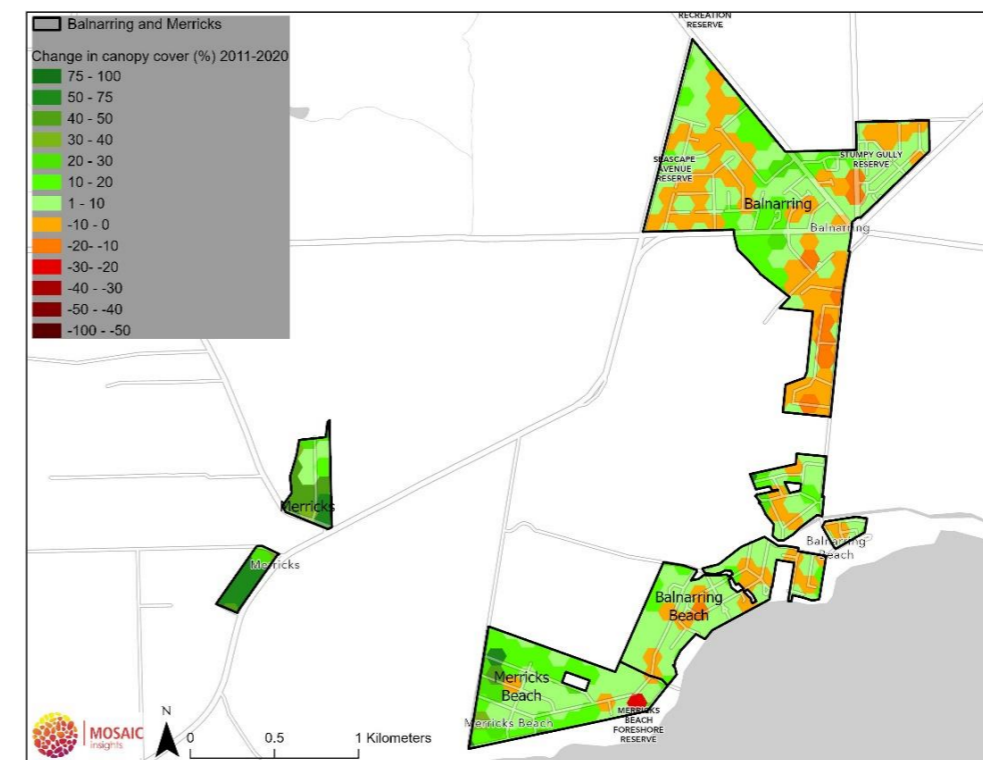


Figure 39. Merricks Beach - Change in canopy cover between 2011 and 2020

Mornington

Variable	Value
Area of township (ha)	1,606.1
Area of canopy 2020 (ha)	334.3
Canopy cover 2020 (%)	20.8
Change in canopy cover 2011-2020	Increase of 1.8%
Heat vulnerability index (1-5, 5 most vulnerable) and township rank (1-28, 1 most vulnerable)	2.46 – Rank 12
2021 population and township rank (1-28, 1 most dense)	26,317 – Rank 1
Prioritisation rank (based on existing canopy cover and heat vulnerability index, 1-28, 1 highest priority)	Rank 3

Tree canopy cover

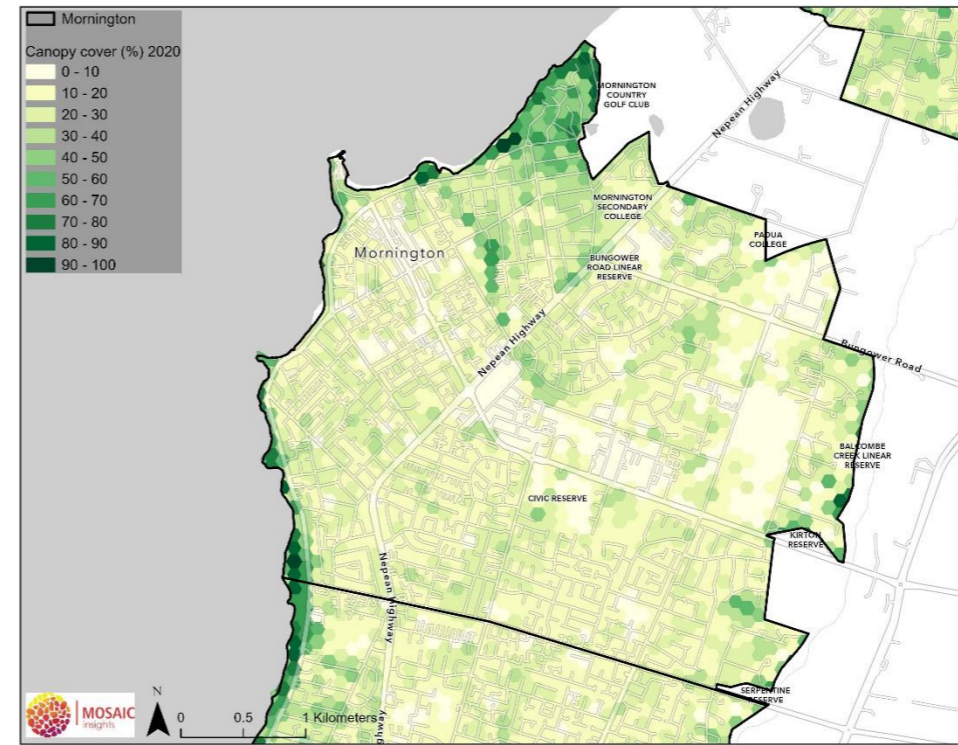


Figure 40. Mornington - Canopy cover in 2020

Heat vulnerability index

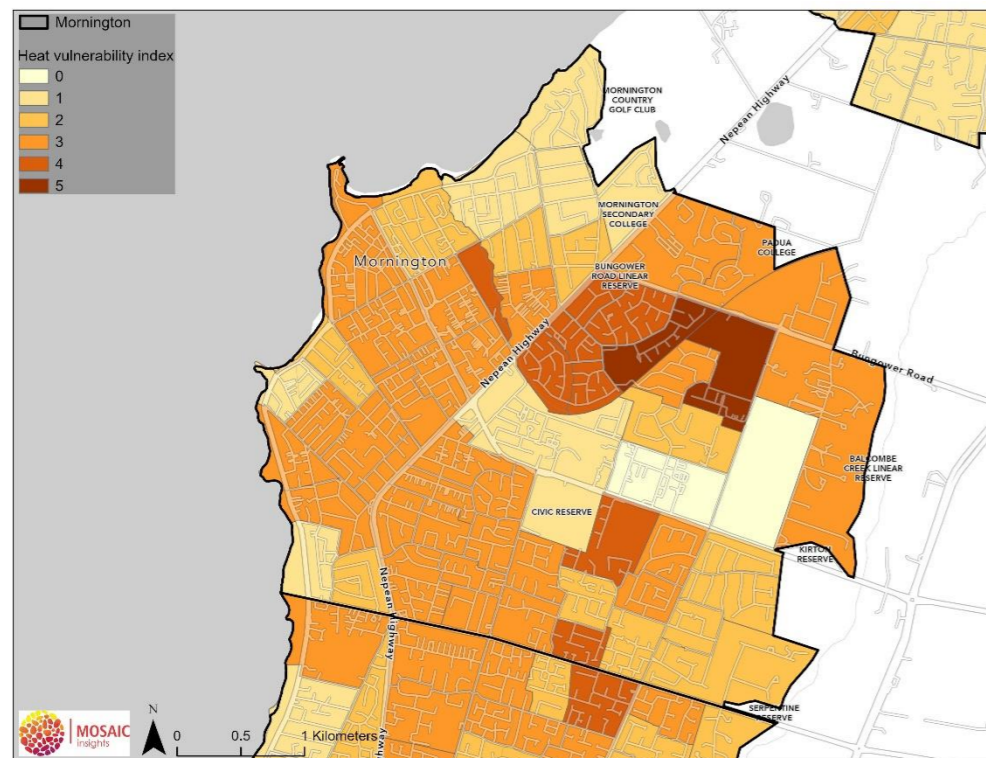


Figure 41. Mornington - Heat vulnerability index (2018)

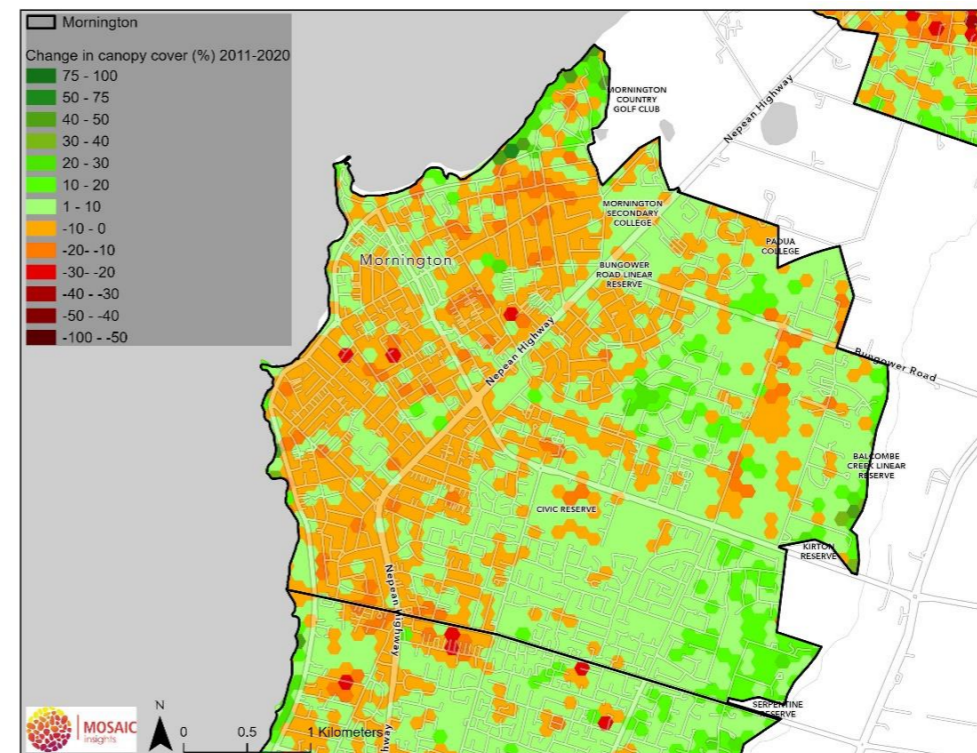


Figure 42. Mornington - Change in canopy cover between 2011 and 2020

Mount Eliza

Variable	Value
Area of township (ha)	1,640.2
Area of canopy 2020 (ha)	672.9
Canopy cover 2020 (%)	41.0
Change in canopy cover 2011-2020	Increase of 9.5%
Heat vulnerability index (1-5, 5 most vulnerable) and township rank (1-28, 1 most vulnerable)	1.12 – Rank 20
2021 population and township rank (1-28, 1 most dense)	18,697 – Rank 3
Prioritisation rank (based on existing canopy cover and heat vulnerability index, 1-28, 1 highest priority)	Rank 16

Tree canopy cover

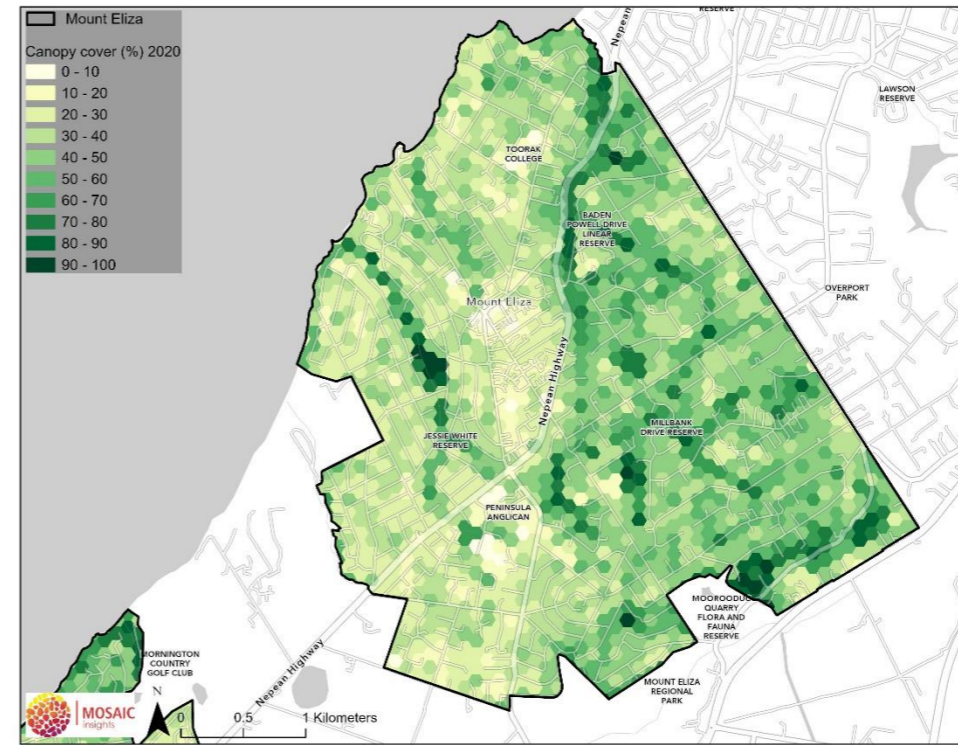


Figure 43. Mount Eliza - Canopy cover in 2020

Heat vulnerability index

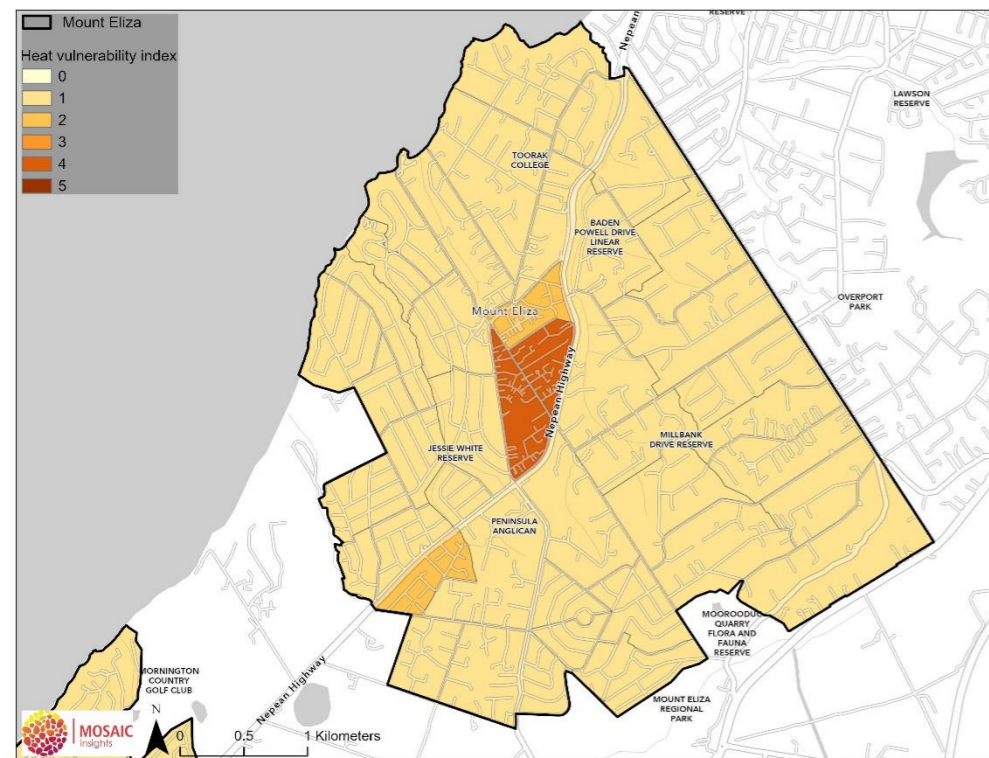


Figure 44. Mount Eliza - Heat vulnerability index (2018)

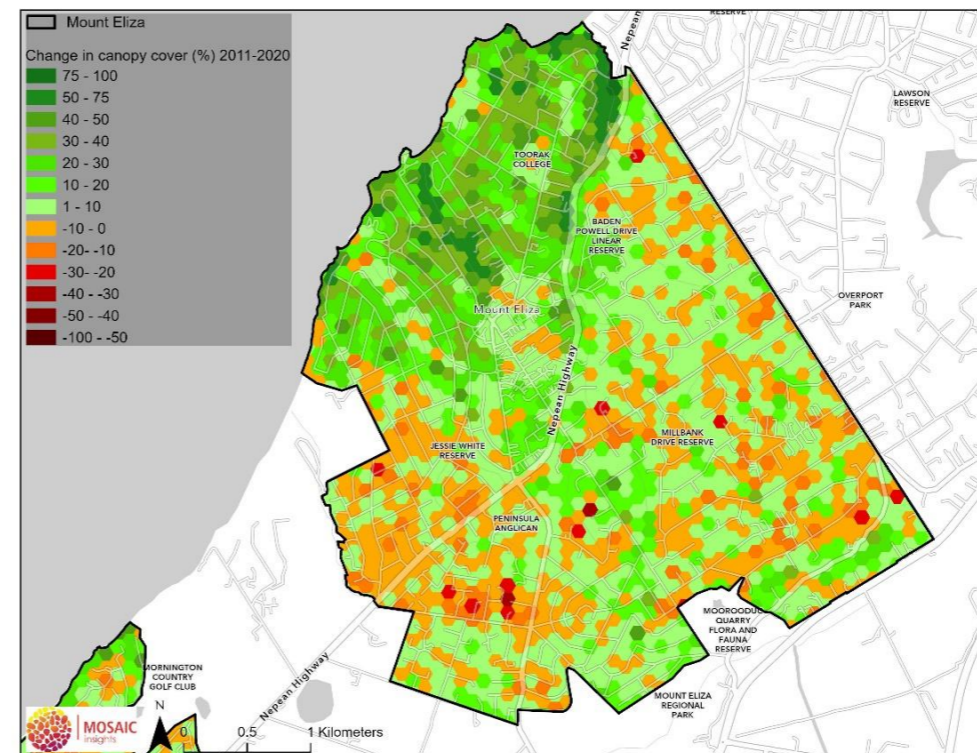


Figure 45. Mount Eliza - Change in canopy cover between 2011 and 2020

Mount Martha

Variable	Value
Area of township (ha)	1,692.8
Area of canopy 2020 (ha)	632.9
Canopy cover 2020 (%)	37.4
Change in canopy cover 2011-2020	Increase of 5.3%
Heat vulnerability index (1-5, 5 most vulnerable) and township rank (1-28, 1 most vulnerable)	1.4 – Rank 17
2021 population and township rank (1-28, 1 most dense)	21,919 – Rank 2
Prioritisation rank (based on existing canopy cover and heat vulnerability index, 1-28, 1 highest priority)	Rank 11

Tree canopy cover

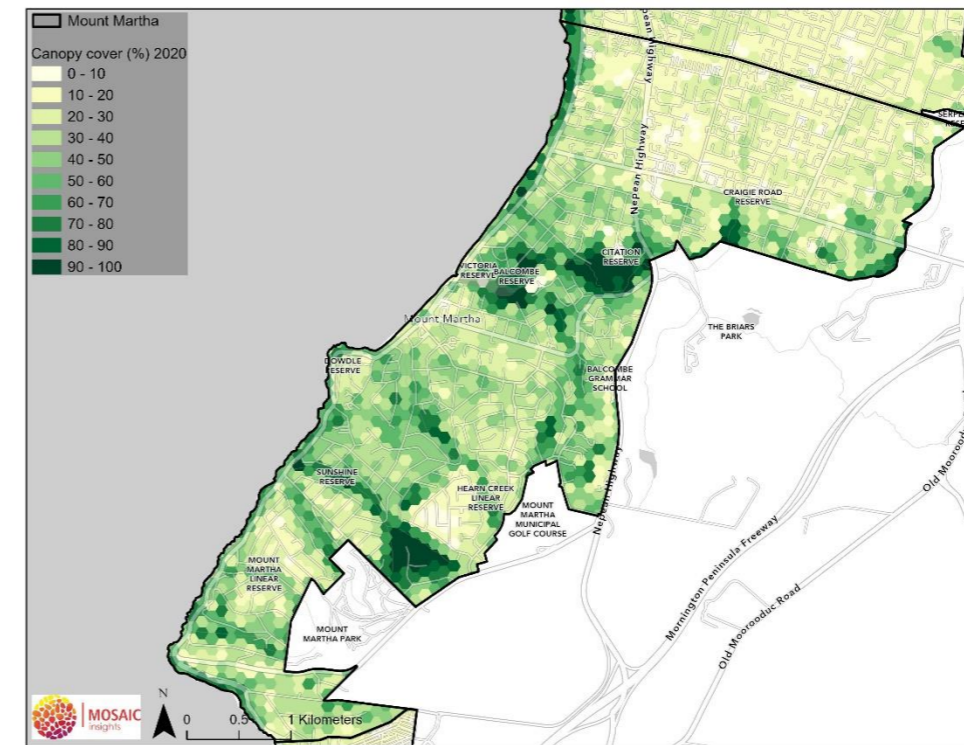


Figure 46. Mount Martha - Canopy cover in 2020

Heat vulnerability index

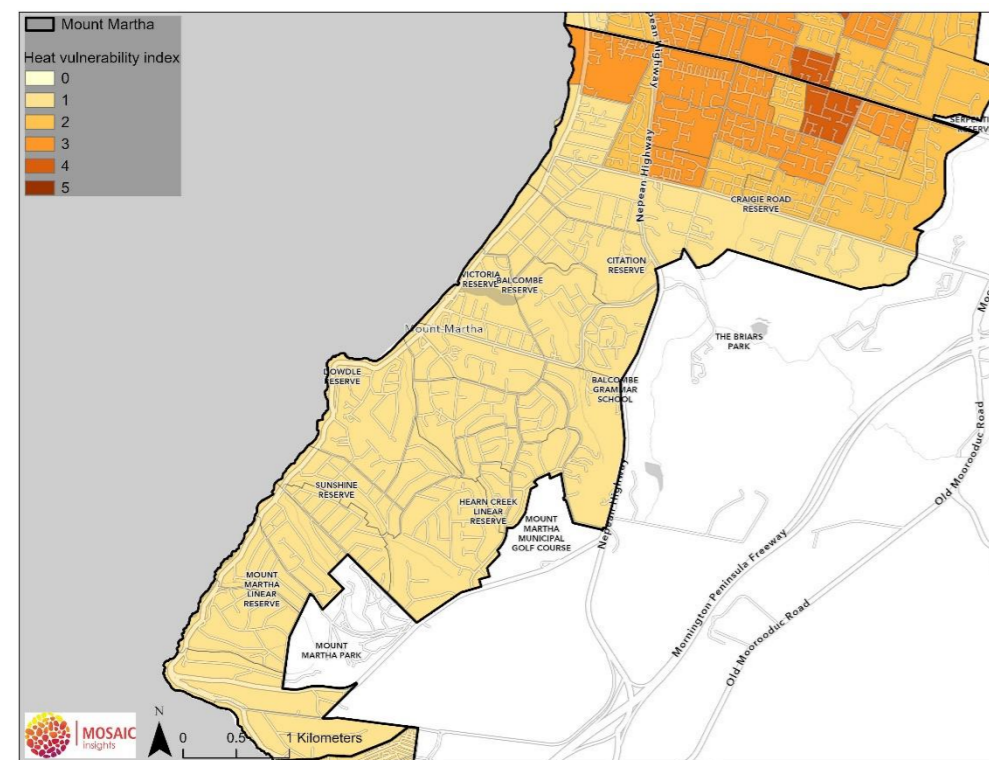


Figure 47. Mount Martha - Heat vulnerability index (2018)

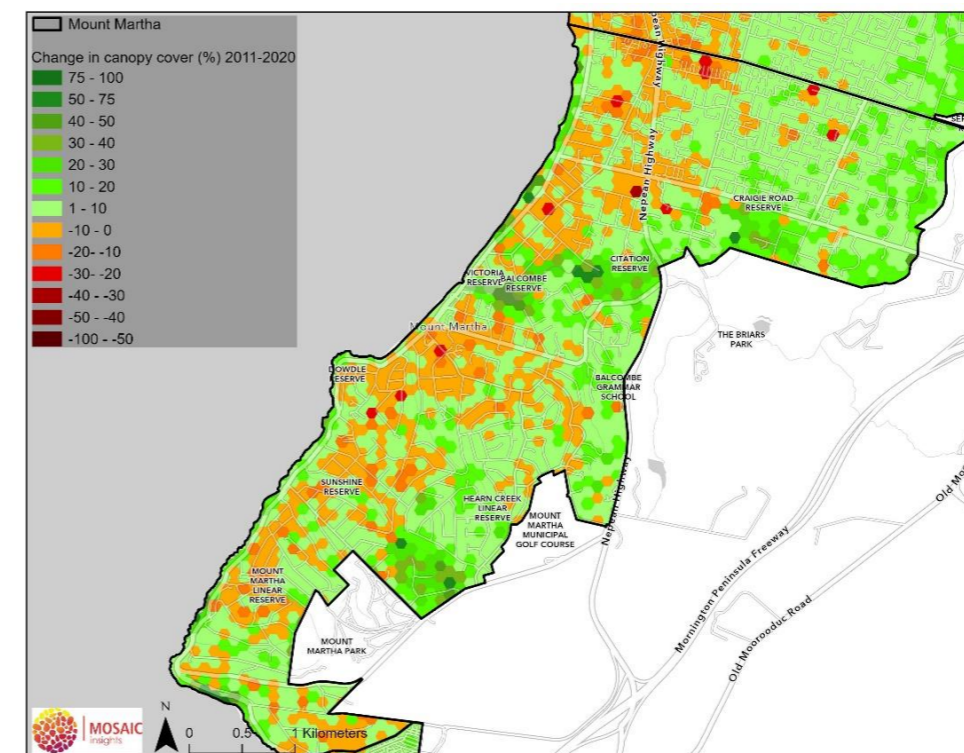


Figure 48. Mount Martha - Change in canopy cover between 2011 and 2020

Point Leo

Variable	Value
Area of township (ha)	50.7
Area of canopy 2020 (ha)	20.6
Canopy cover 2020 (%)	40.6
Change in canopy cover 2011-2020	Increase of 10.9%
Heat vulnerability index (1-5, 5 most vulnerable) and township rank (1-29, 1 most vulnerable)	1 – Rank 22
2021 population and township rank (1-29, 1 most dense)	189 – Rank 29
Prioritisation rank (based on existing canopy cover and heat vulnerability index, 1-29, 1 highest priority)	Rank 15

Tree canopy cover

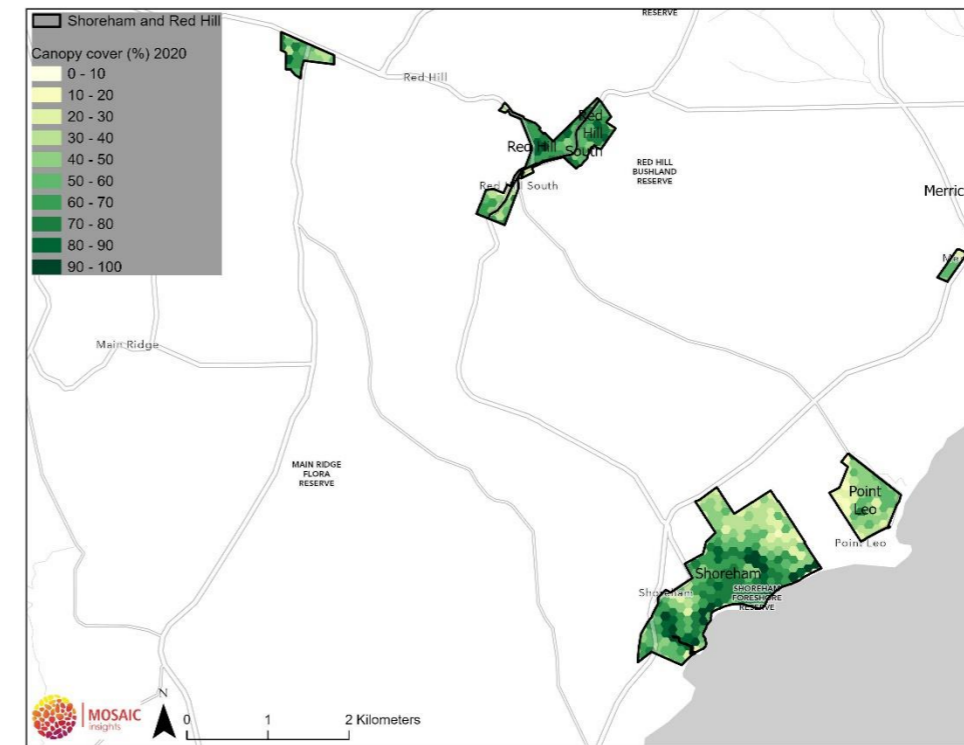


Figure 49. Point Leo - Canopy cover in 2020

Heat vulnerability index

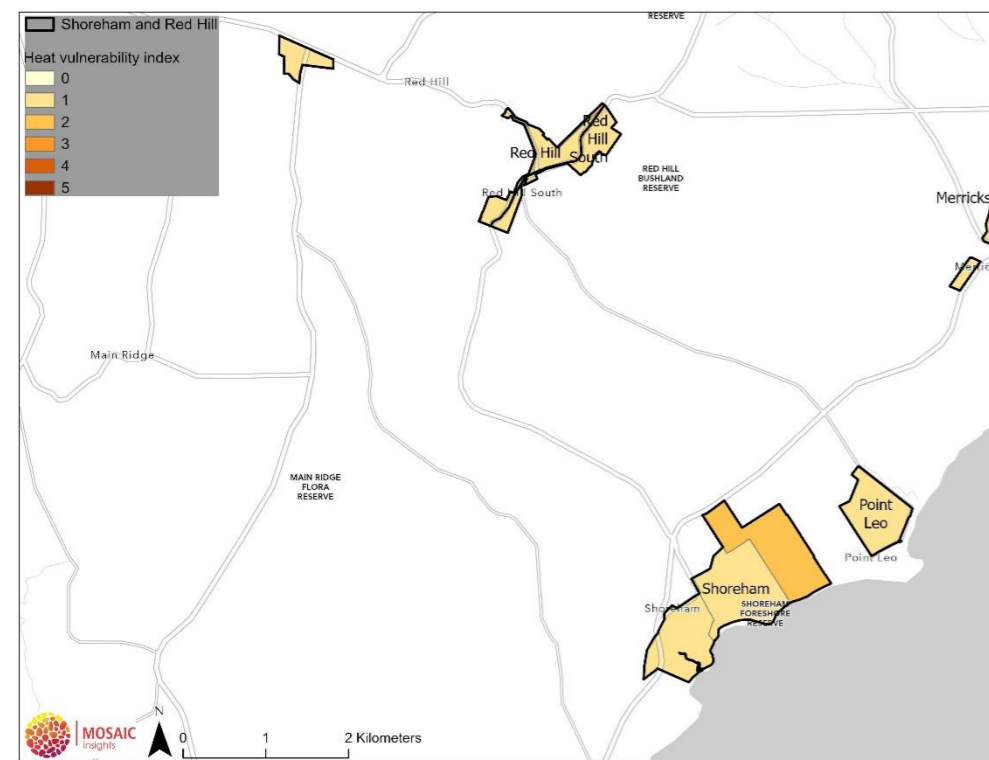


Figure 50. Point Leo - Heat vulnerability index (2018)

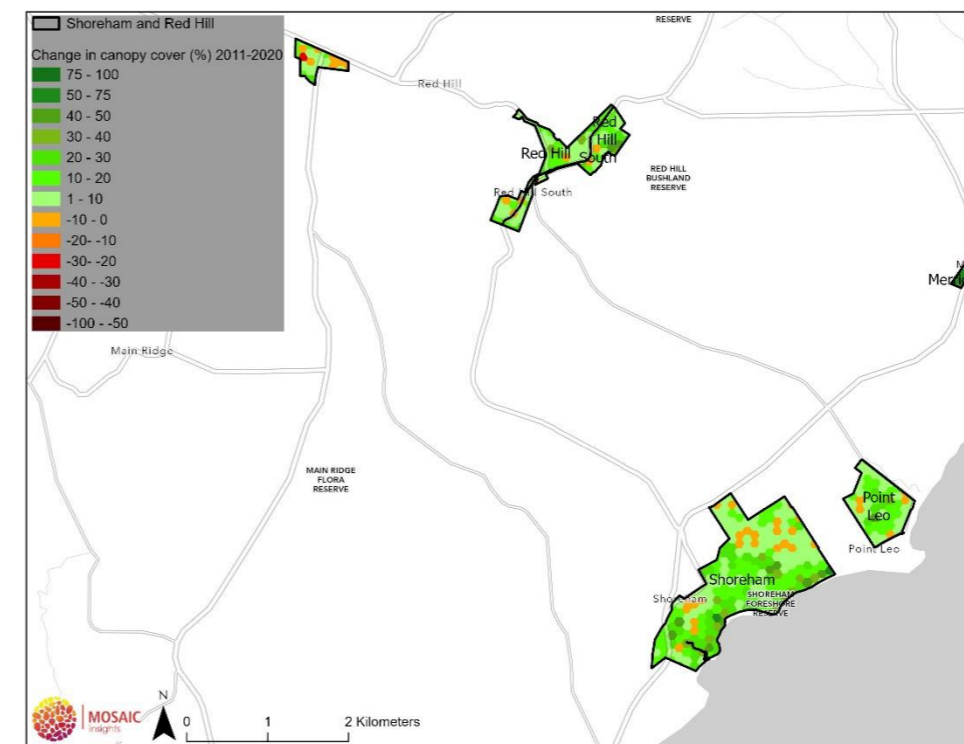


Figure 51. Point Leo - Change in canopy cover between 2011 and 2020

Portsea

Variable	Value
Area of township (ha)	495.3
Area of canopy 2020 (ha)	231.1
Canopy cover 2020 (%)	46.6
Change in canopy cover 2011-2020	Increase of 12.1%
Heat vulnerability index (1-5, 5 most vulnerable) and township rank (1-28, 1 most vulnerable)	1 – Rank 22
2021 population and township rank (1-28, 1 most dense)	1,020 – Rank 23
Prioritisation rank (based on existing canopy cover and heat vulnerability index, 1-28, 1 highest priority)	Rank 20

Tree canopy cover

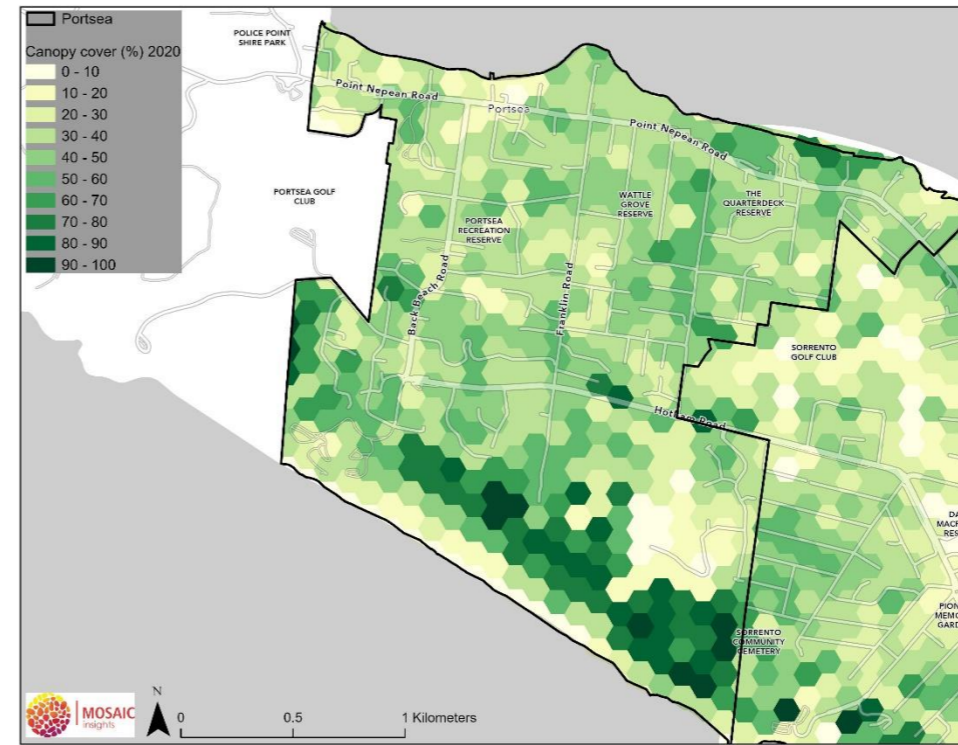


Figure 52. Portsea - Canopy cover in 2020

Heat vulnerability index

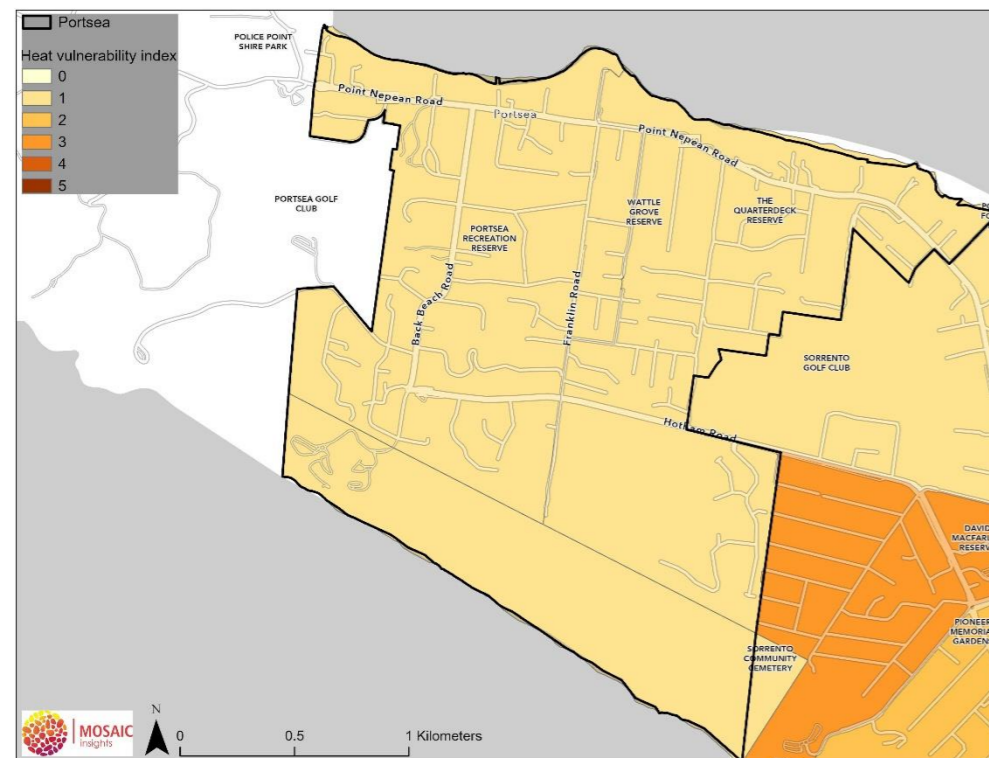


Figure 53. Portsea - Heat vulnerability index (2018)

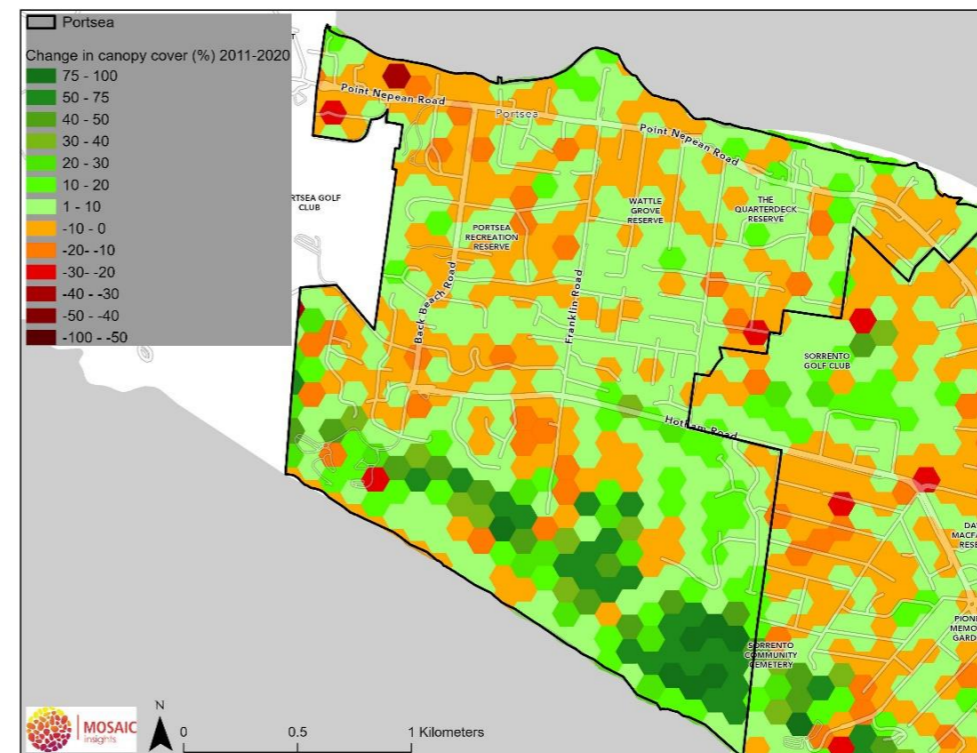


Figure 54. Portsea - Change in canopy cover between 2011 and 2020

Red Hill

Variable	Value
Area of township (ha)	53.6
Area of canopy 2020 (ha)	32
Canopy cover 2020 (%)	59.8
Change in canopy cover 2011-2020	Increase of 7.8%
Heat vulnerability index (1-5, 5 most vulnerable) and township rank (1-28, 1 most vulnerable)	1.05 – Rank 21
2021 population and township rank (1-28, 1 most dense)	1056 – Rank 22
Prioritisation rank (based on existing canopy cover and heat vulnerability index, 1-28, 1 highest priority)	Rank 27

Tree canopy cover



Figure 55. Red Hill - Canopy cover in 2020

Heat vulnerability index

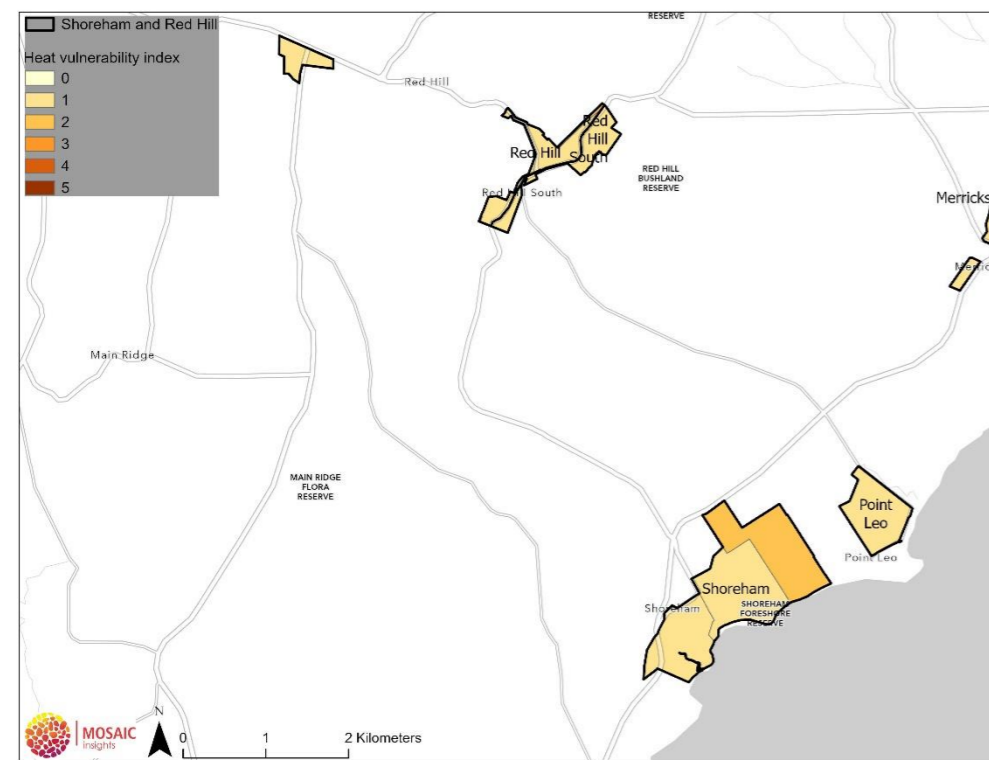


Figure 56. Red Hill - Heat vulnerability index (2018)

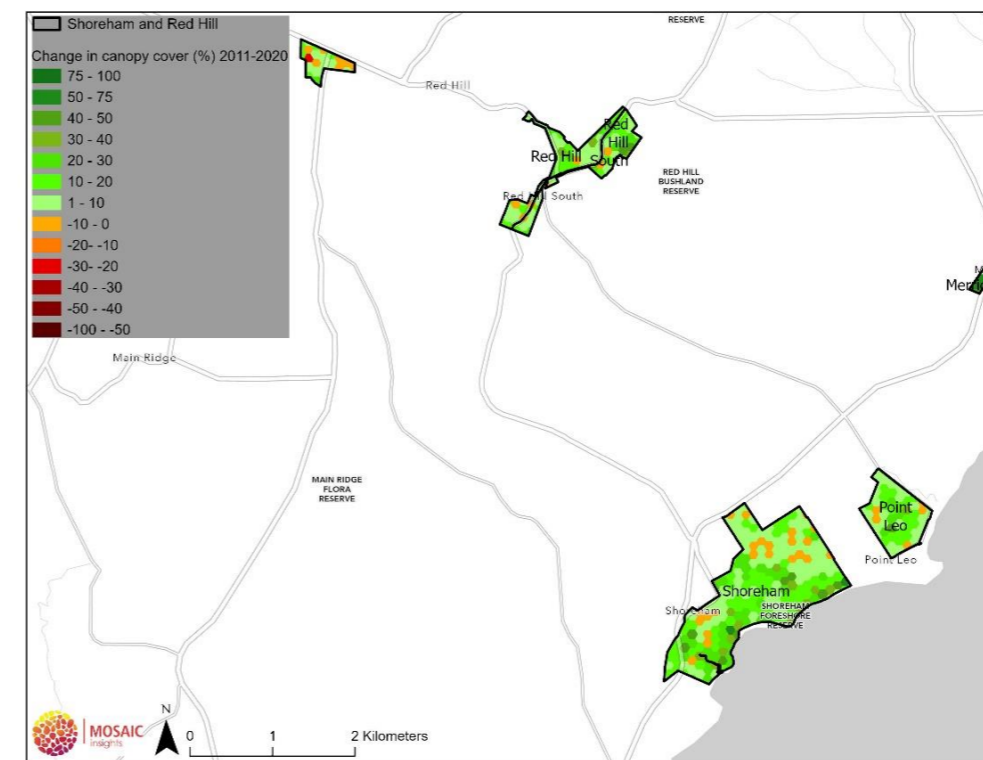


Figure 57. Red Hill - Change in canopy cover between 2011 and 2020

Rosebud

Variable	Value
Area of township (ha)	1,094.9
Area of canopy 2020 (ha)	324.9
Canopy cover 2020 (%)	29.7
Change in canopy cover 2011-2020	Increase of 3.5%
Heat vulnerability index (1-5, 5 most vulnerable) and township rank (1-28, 1 most vulnerable)	3.44 – Rank 3
2021 population and township rank (1-28, 1 most dense)	15,024 – Rank 4
Prioritisation rank (based on existing canopy cover and heat vulnerability index, 1-28, 1 highest priority)	Rank 6

Tree canopy cover

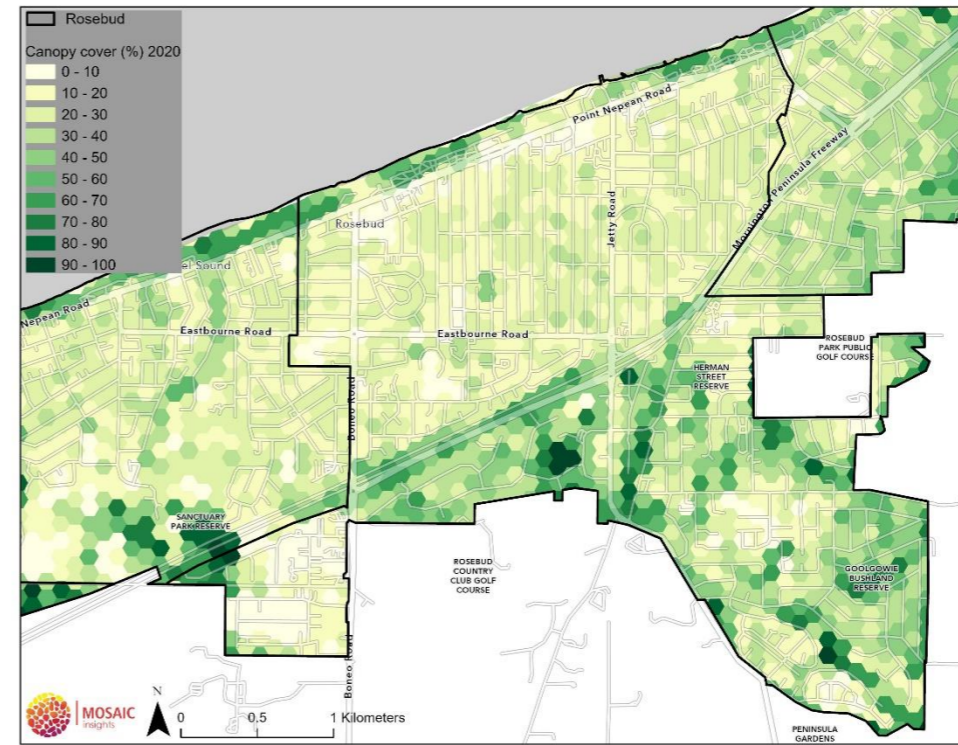


Figure 58. Rosebud - Canopy cover in 2020

Heat vulnerability index

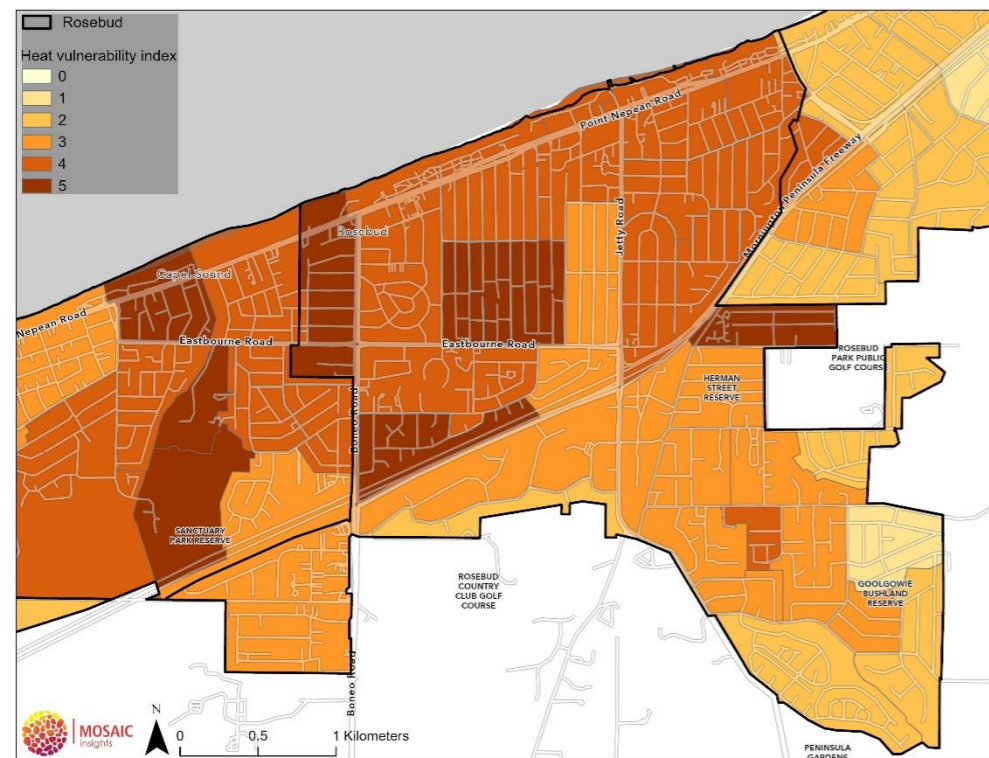


Figure 59. Rosebud - Heat vulnerability index (2018)

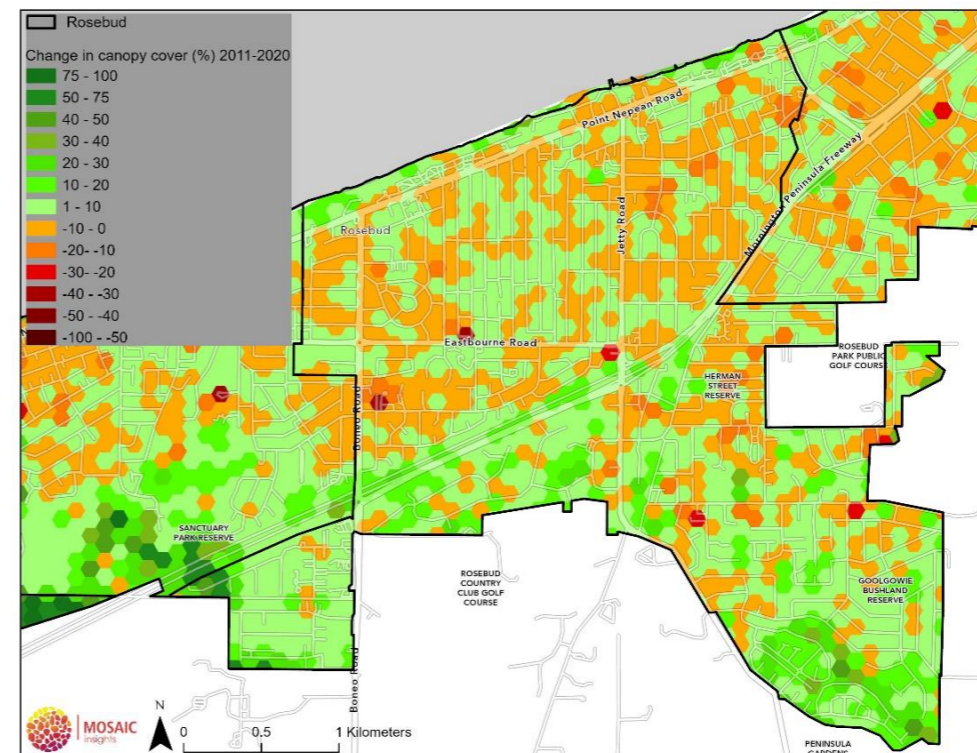


Figure 60. Rosebud - Change in canopy cover between 2011 and 2020

Rye

Variable	Value
Area of township (ha)	1,434.4
Area of canopy 2020 (ha)	709.8
Canopy cover 2020 (%)	49.5
Change in canopy cover 2011-2020	Increase of 7%
Heat vulnerability index (1-5, 5 most vulnerable) and township rank (1-28, 1 most vulnerable)	2.76 – Rank 8
2021 population and township rank (1-28, 1 most dense)	10,261 – Rank 7
Prioritisation rank (based on existing canopy cover and heat vulnerability index, 1-28, 1 highest priority)	Rank 24

Tree canopy cover

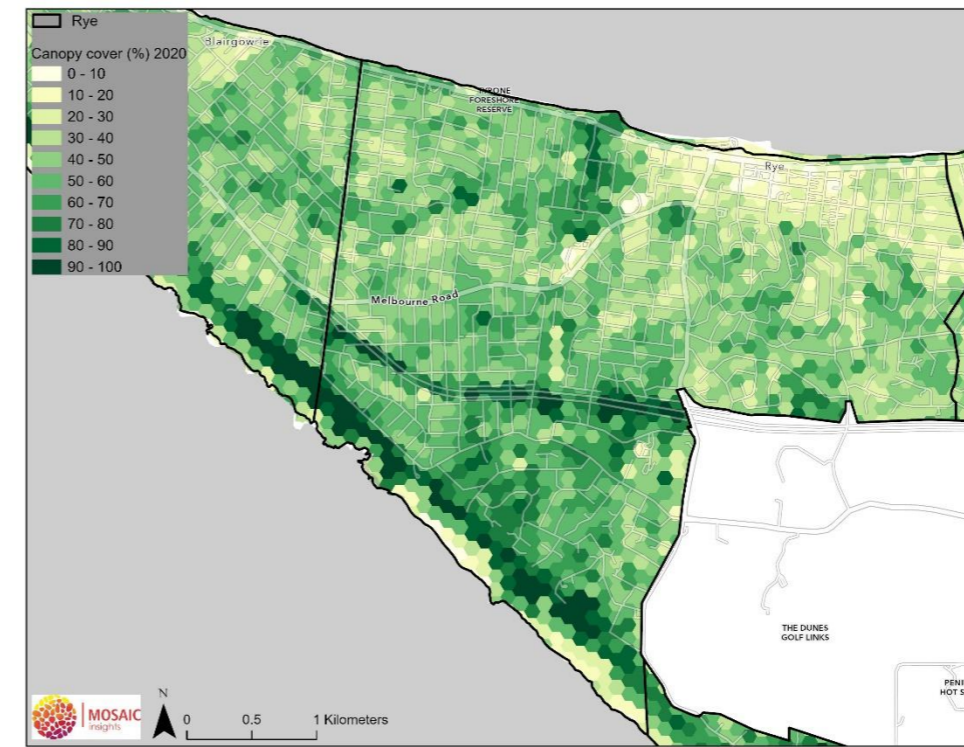


Figure 61. Rye - Canopy cover in 2020

Heat vulnerability index

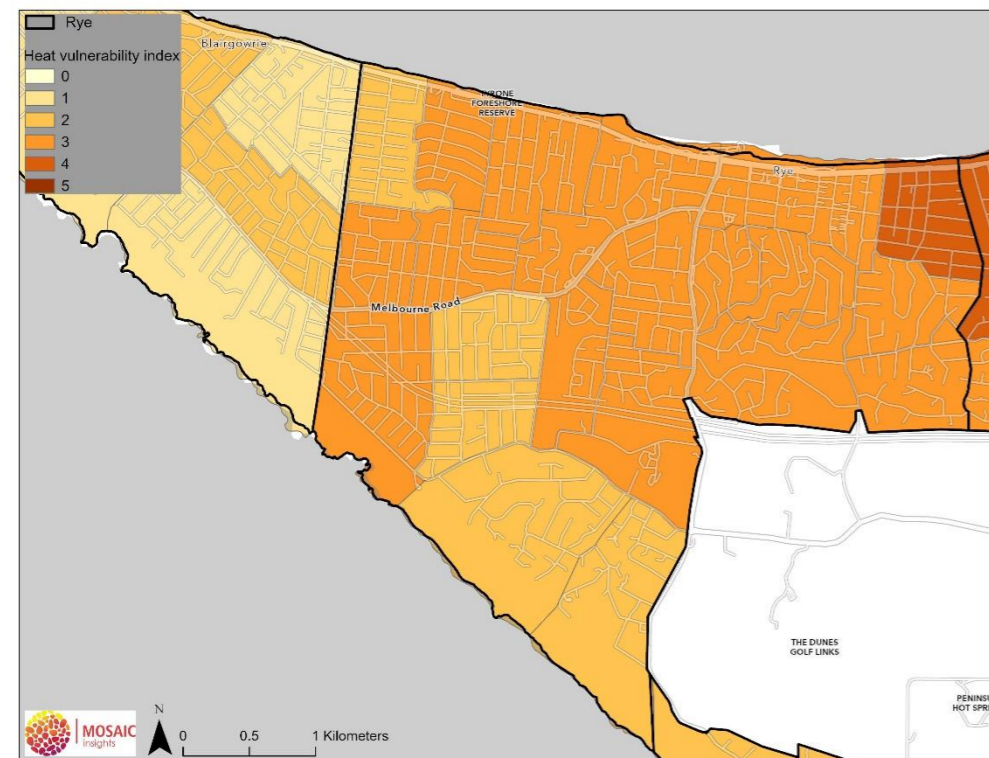


Figure 62. Rye - Heat vulnerability index (2018)

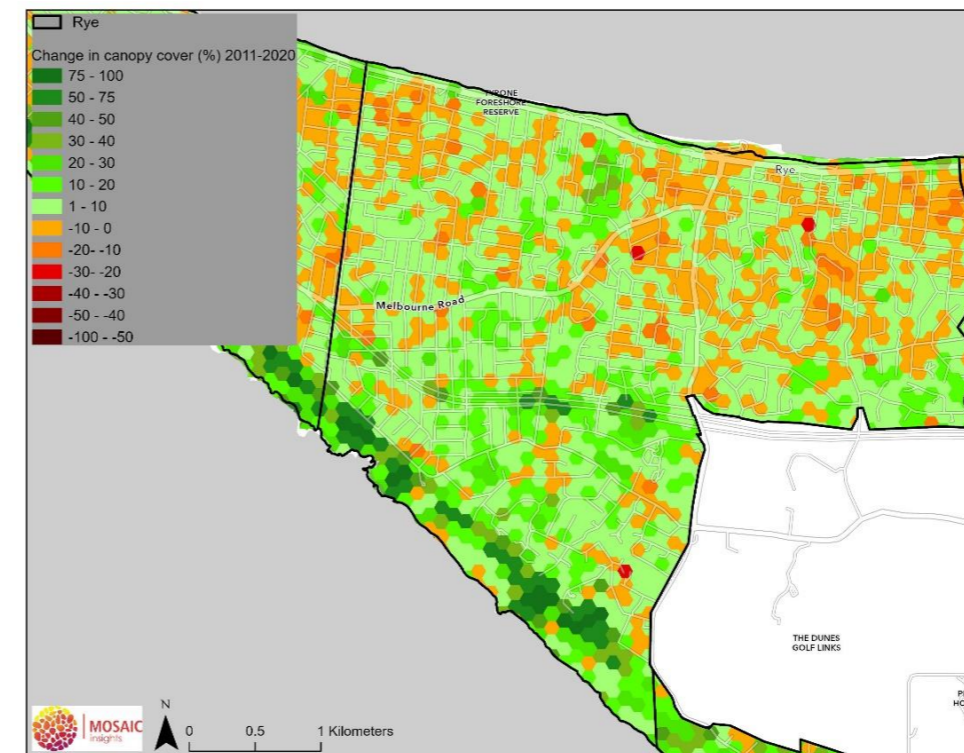


Figure 63. Rye - Change in canopy cover between 2011 and 2020

Safety Beach

Variable	Value
Area of township (ha)	426.5
Area of canopy 2020 (ha)	60.6
Canopy cover 2020 (%)	14.2
Change in canopy cover 2011-2020	Increase of 2.2%
Heat vulnerability index (1-5, 5 most vulnerable) and township rank (1-28, 1 most vulnerable)	2.55 – Rank 11
2021 population and township rank (1-28, 1 most dense)	6,822 – Rank 9
Prioritisation rank (based on existing canopy cover and heat vulnerability index, 1-28, 1 highest priority)	Rank 1

Tree canopy cover

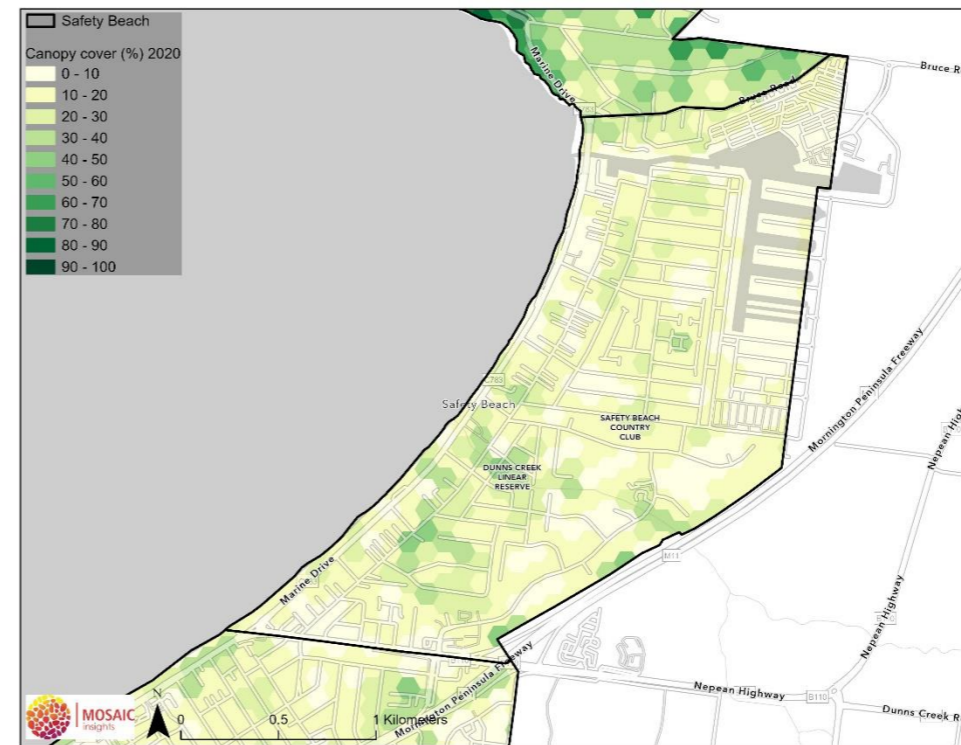


Figure 64. Safety Beach - Canopy cover in 2020

Heat vulnerability index

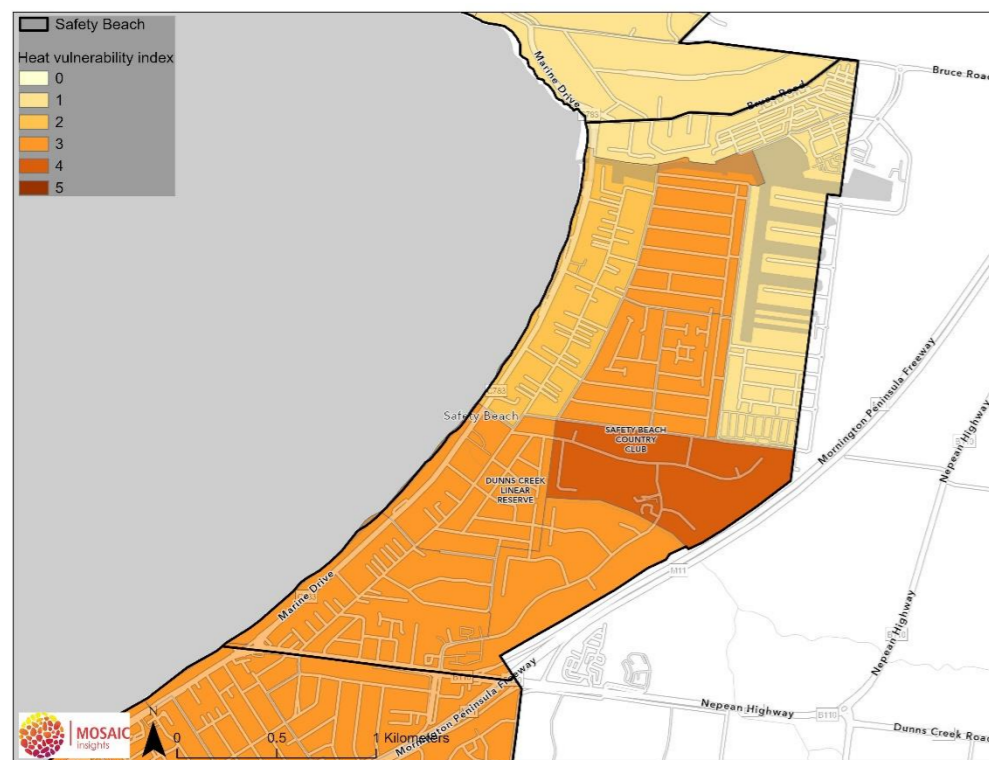


Figure 65. Safety Beach - Heat vulnerability index (2018)

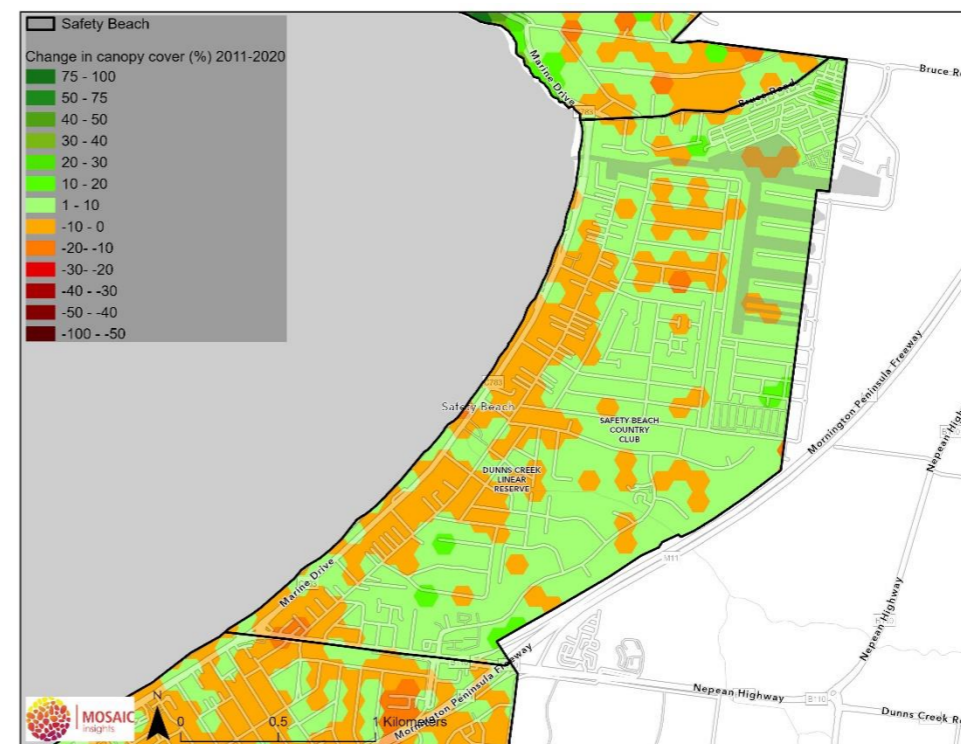


Figure 66. Safety Beach - Change in canopy cover between 2011 and 2020

Shoreham

Variable	Value
Area of township (ha)	214.5
Area of canopy 2020 (ha)	127.1
Canopy cover 2020 (%)	59.2
Change in canopy cover 2011-2020	Increase of 14.2%
Heat vulnerability index (1-5, 5 most vulnerable) and township rank (1-28, 1 most vulnerable)	1.36 – Rank 18
2021 population and township rank (1-28, 1 most dense)	569 – Rank 26
Prioritisation rank (based on existing canopy cover and heat vulnerability index, 1-28, 1 highest priority)	Rank 26

Tree canopy cover

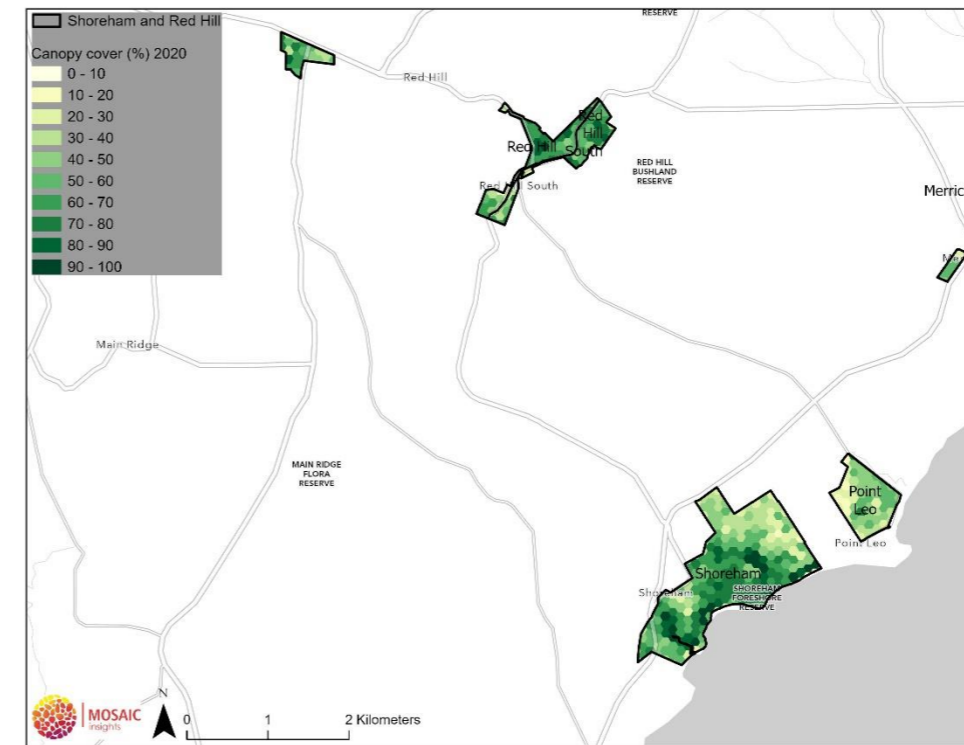


Figure 67. Shoreham - Canopy cover in 2020

Heat vulnerability index

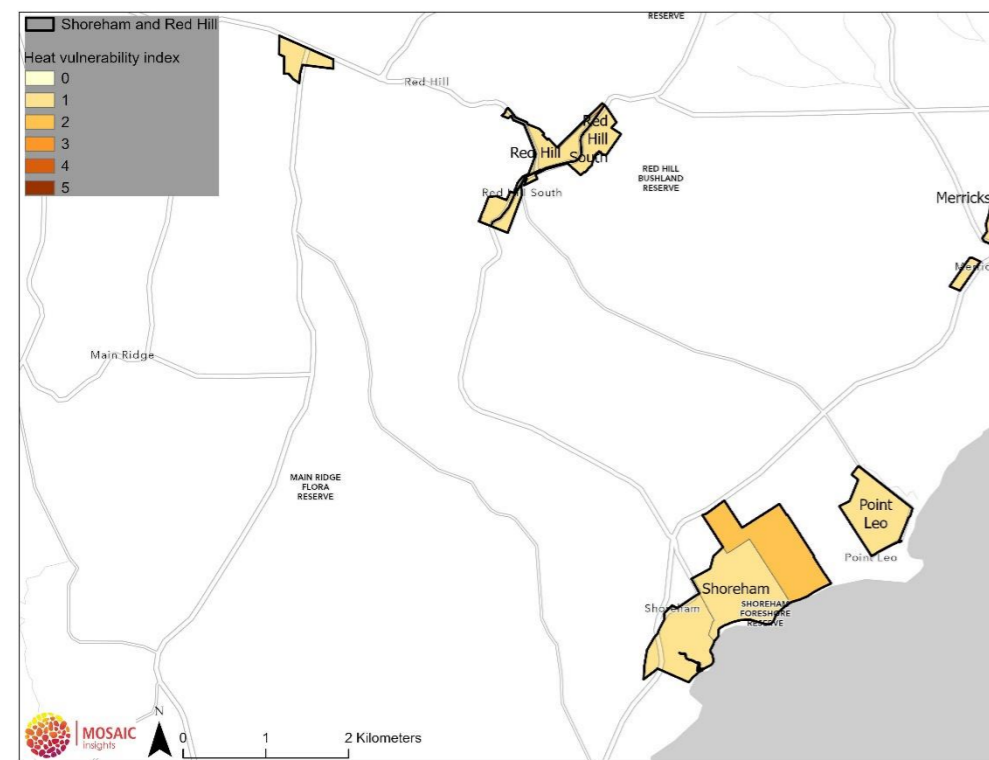


Figure 68. Shoreham - Heat vulnerability index (2018)

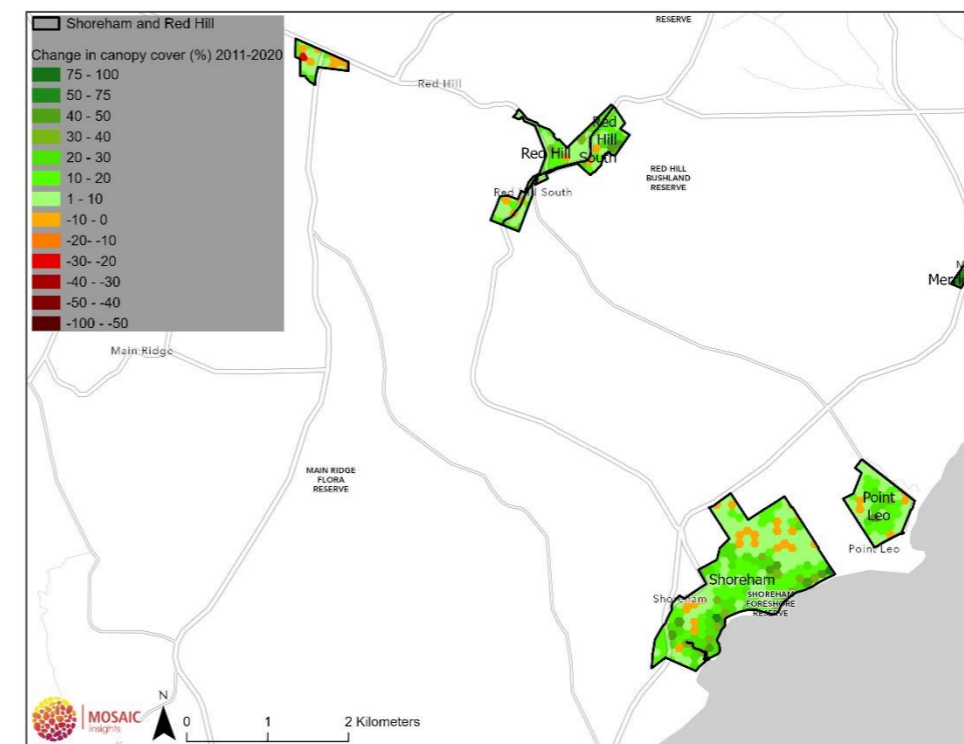


Figure 69. Shoreham - Change in canopy cover between 2011 and 2020

Somers

Variable	Value
Area of township (ha)	242.3
Area of canopy 2020 (ha)	117
Canopy cover 2020 (%)	48.3
Change in canopy cover 2011-2020	Increase of 29.5%
Heat vulnerability index (1-5, 5 most vulnerable) and township rank (1-28, 1 most vulnerable)	1 – Rank 22
2021 population and township rank (1-28, 1 most dense)	1,916 – Rank 19
Prioritisation rank (based on existing canopy cover and heat vulnerability index, 1-28, 1 highest priority)	Rank 22

Tree canopy cover

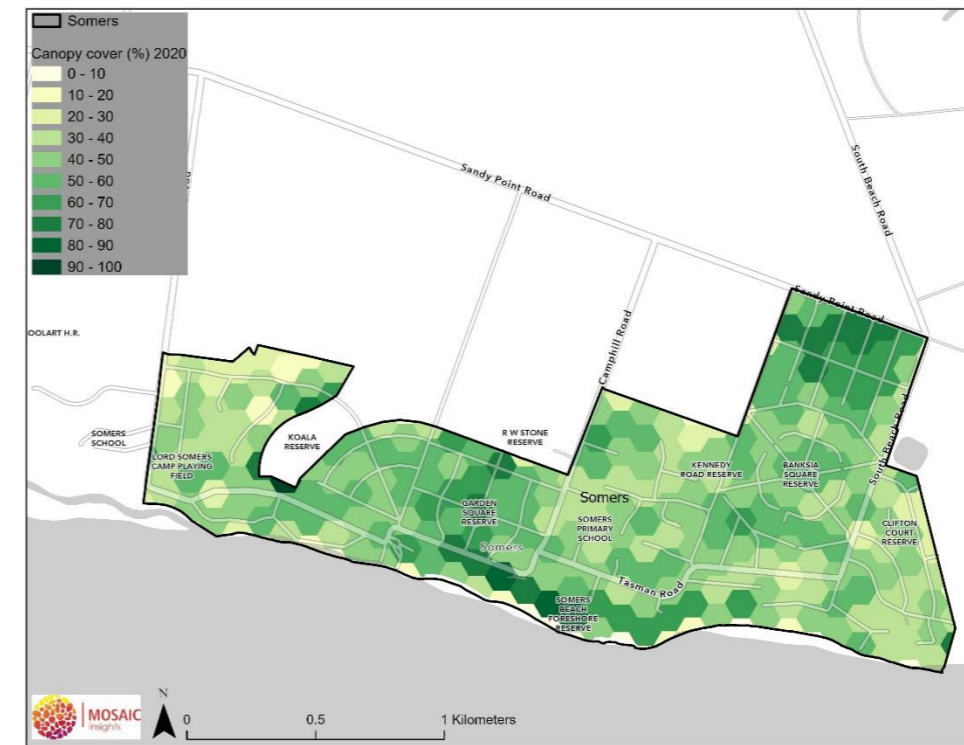


Figure 70. Somers - Canopy cover in 2020

Heat vulnerability index

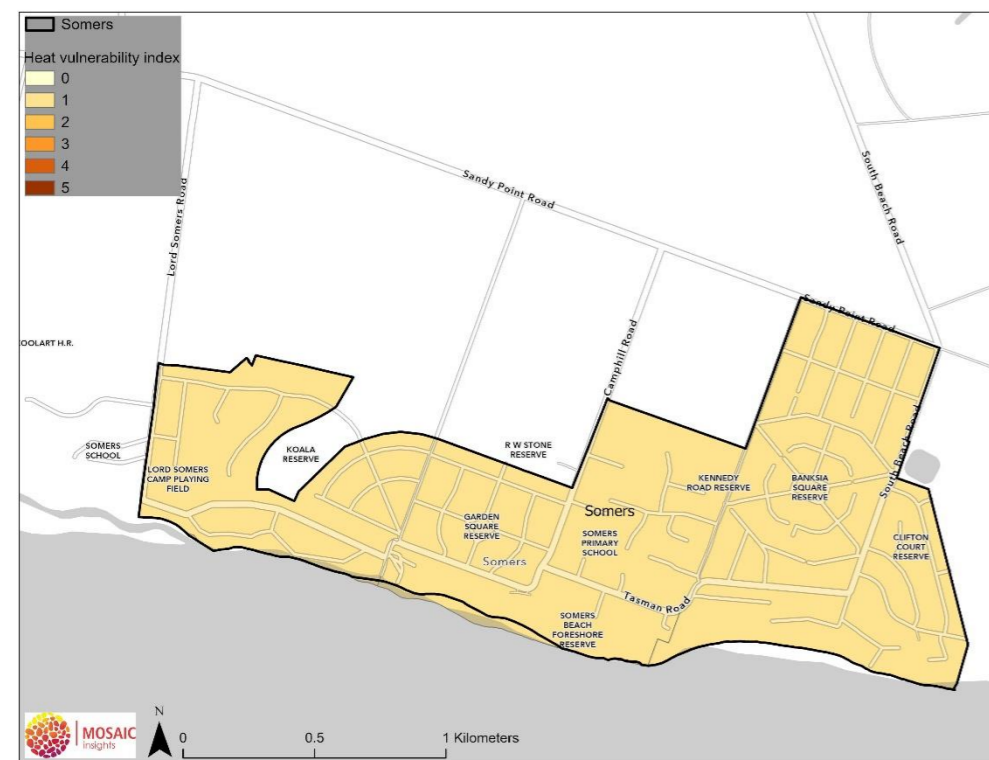


Figure 71. Somers - Heat vulnerability index (2018)

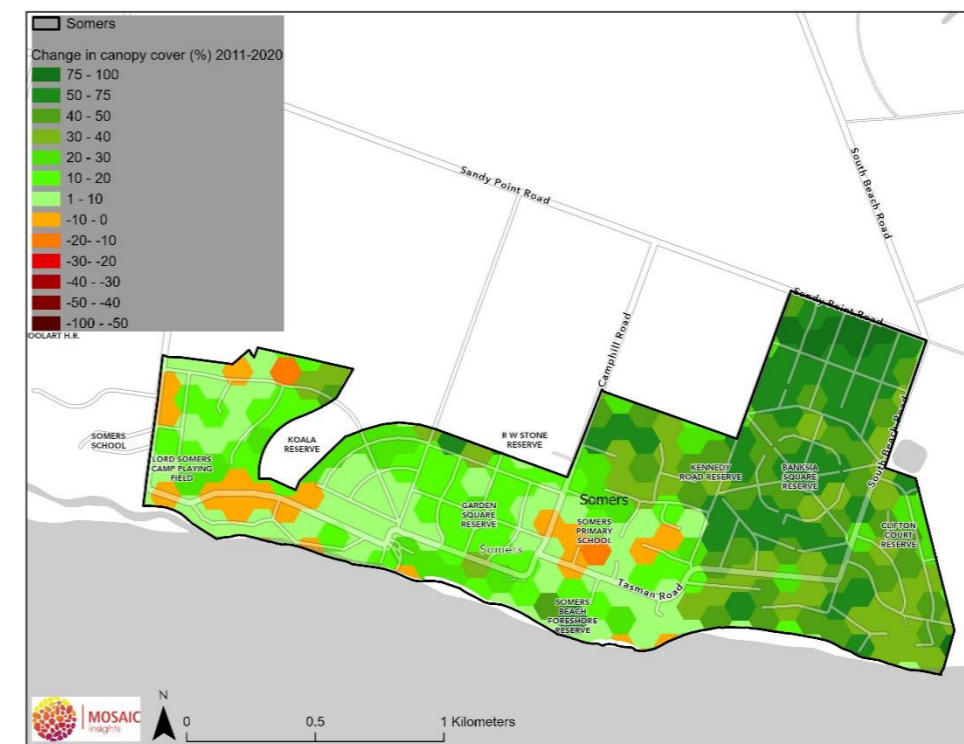


Figure 72. Somers - Change in canopy cover between 2011 and 2020

Somerville

Variable	Value
Area of township (ha)	2,353.8
Area of canopy 2020 (ha)	704.9
Canopy cover 2020 (%)	29.9
Change in canopy cover 2011-2020	Increase of 10.9%
Heat vulnerability index (1-5, 5 most vulnerable) and township rank (1-28, 1 most vulnerable)	2.71 – Rank 9
2021 population and township rank (1-28, 1 most dense)	12,263 – Rank 5
Prioritisation rank (based on existing canopy cover and heat vulnerability index, 1-28, 1 highest priority)	Rank 7

Tree canopy cover

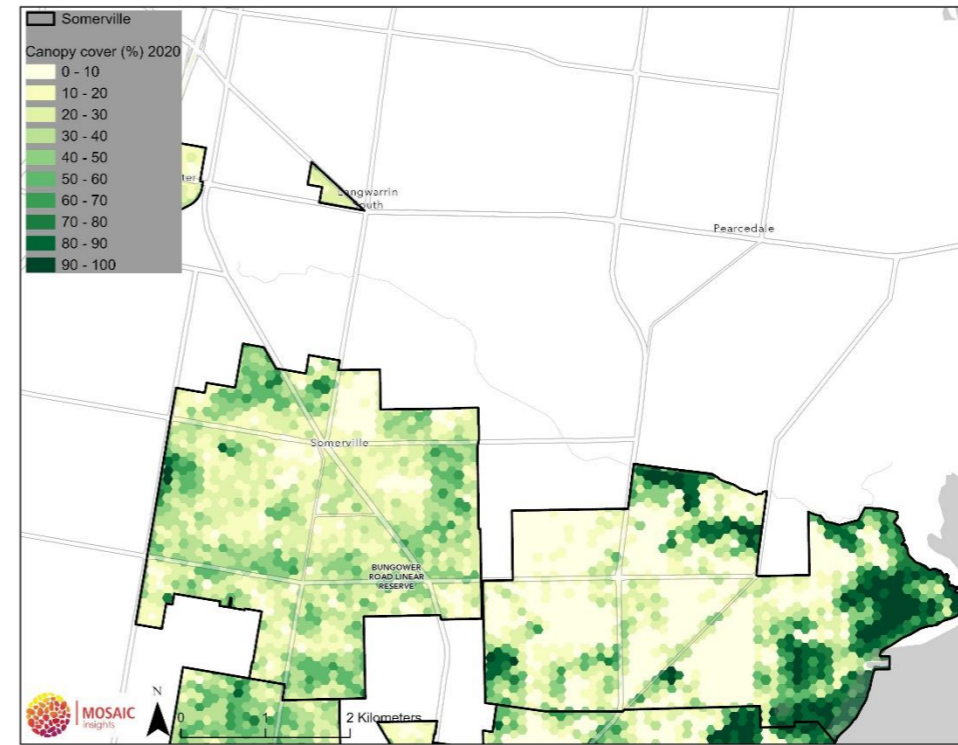


Figure 73. Somerville - Canopy cover in 2020

Heat vulnerability index

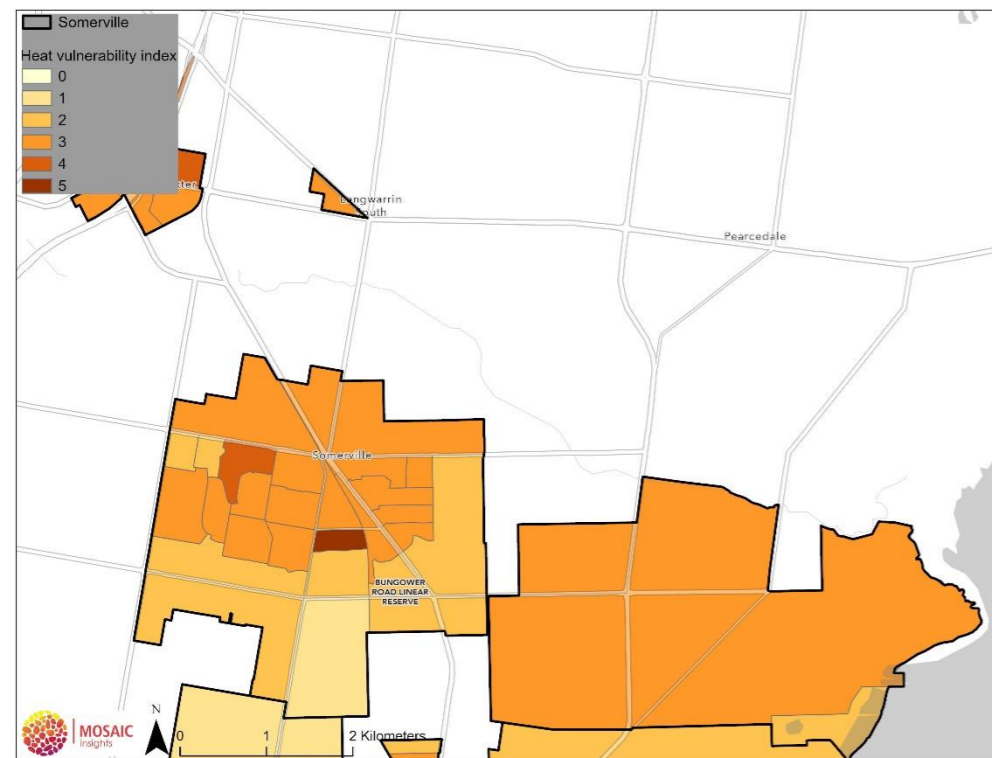


Figure 74. Somerville - Heat vulnerability index (2018)

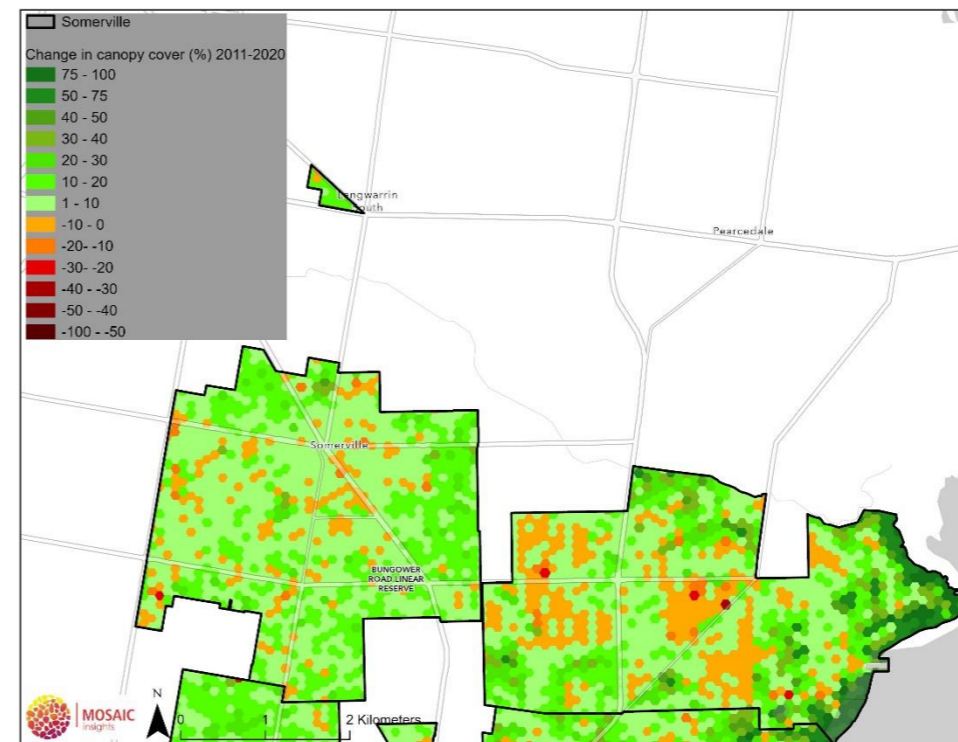


Figure 75. Somerville - Change in canopy cover between 2011 and 2020

Sorrento

Variable	Value
Area of township (ha)	701.7
Area of canopy 2020 (ha)	325.5
Canopy cover 2020 (%)	46.4
Change in canopy cover 2011-2020	Increase of 10.6%
Heat vulnerability index (1-5, 5 most vulnerable) and township rank (1-28, 1 most vulnerable)	1.53 – Rank 15
2021 population and township rank (1-28, 1 most dense)	2,215 – Rank 17
Prioritisation rank (based on existing canopy cover and heat vulnerability index, 1-28, 1 highest priority)	Rank 18

Tree canopy cover

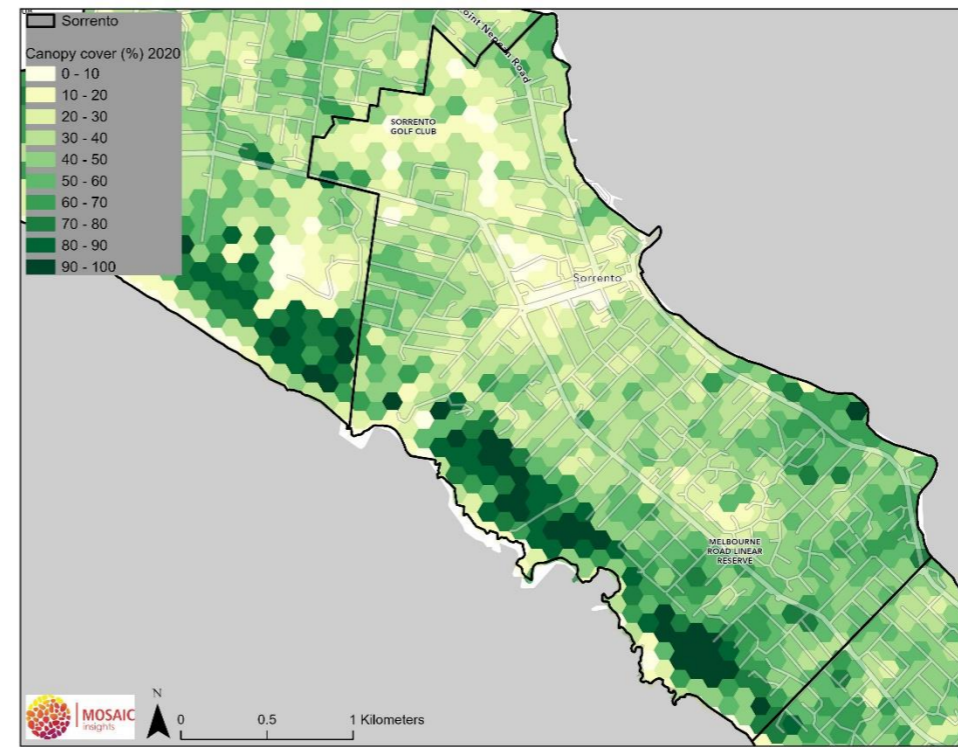


Figure 76. Sorrento - Canopy cover in 2020

Heat vulnerability index

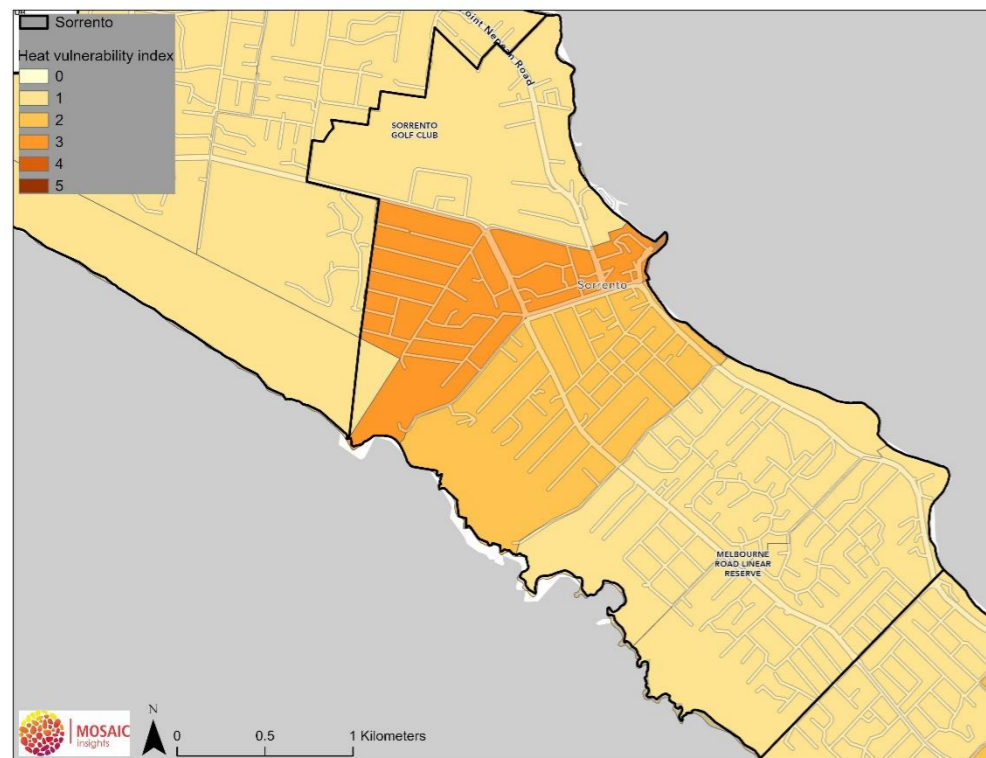


Figure 77. Sorrento - Heat vulnerability index (2018)

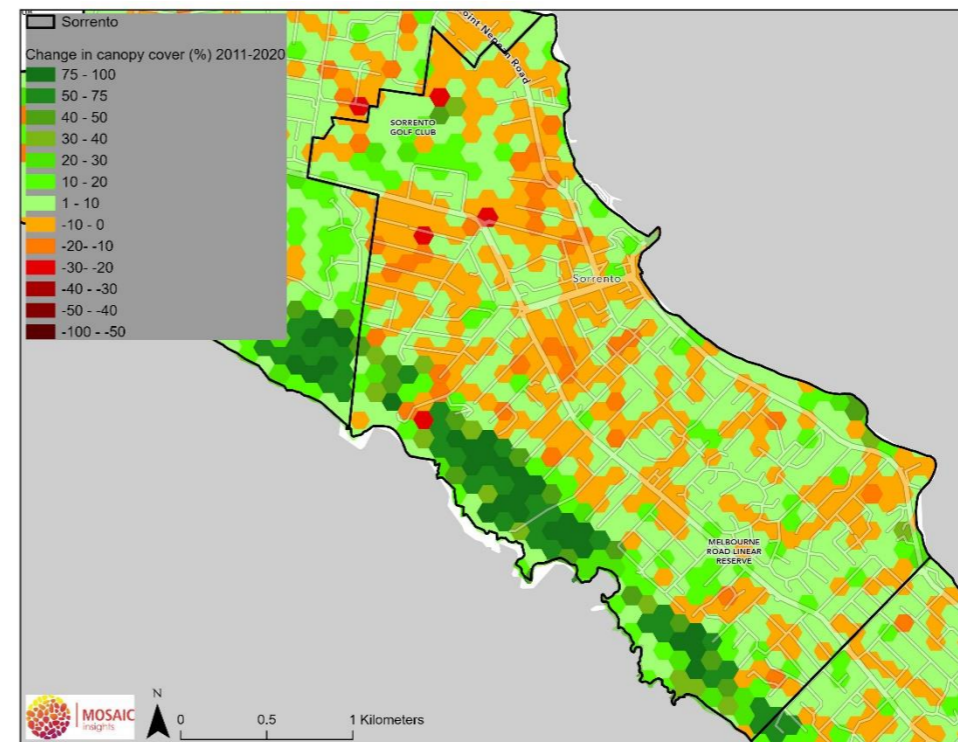


Figure 78. Sorrento - Change in canopy cover between 2011 and 2020

St Andrews Beach

Variable	Value
Area of township (ha)	302.5
Area of canopy 2020 (ha)	182.6
Canopy cover 2020 (%)	60.4
Change in canopy cover 2011-2020	Increase of 15.3%
Heat vulnerability index (1-5, 5 most vulnerable) and township rank (1-28, 1 most vulnerable)	1.51 – Rank 16
2021 population and township rank (1-28, 1 most dense)	1,293 – Rank 21
Prioritisation rank (based on existing canopy cover and heat vulnerability index, 1-28, 1 highest priority)	Rank 28

Tree canopy cover

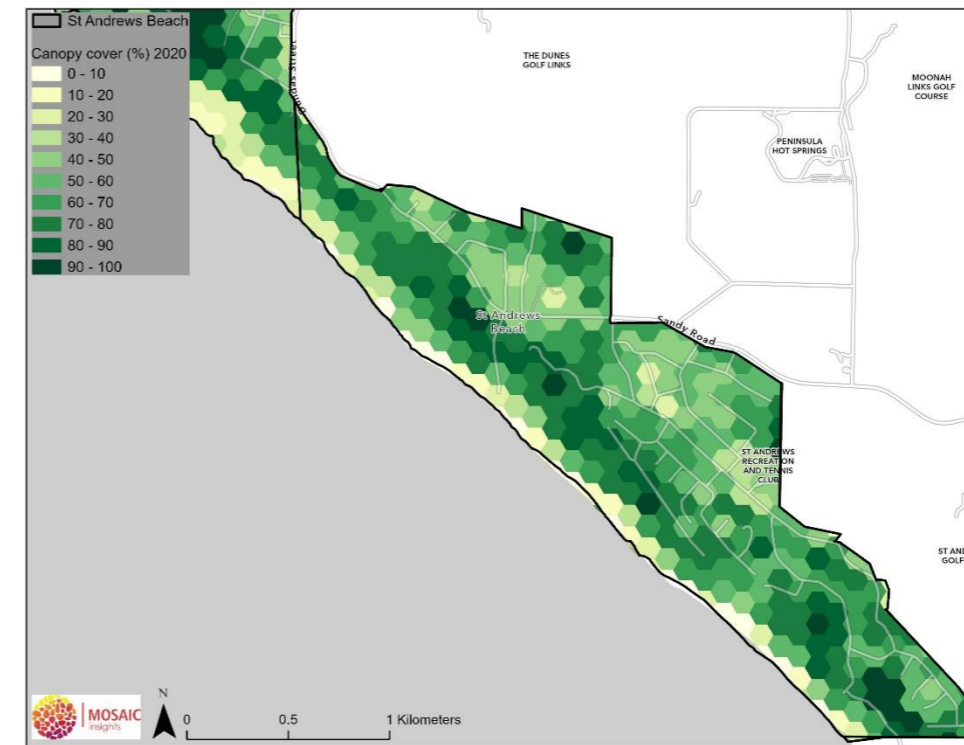


Figure 79. St Andrews Beach - Canopy cover in 2020

Heat vulnerability index

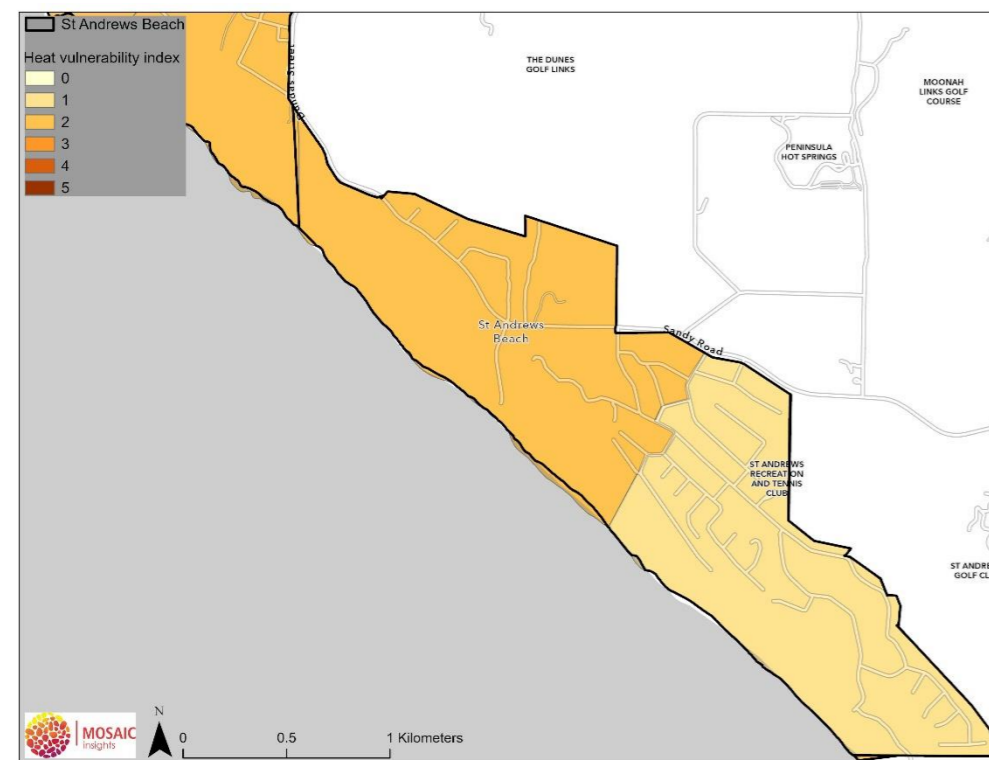


Figure 80. St Andrews Beach - Heat vulnerability index (2018)

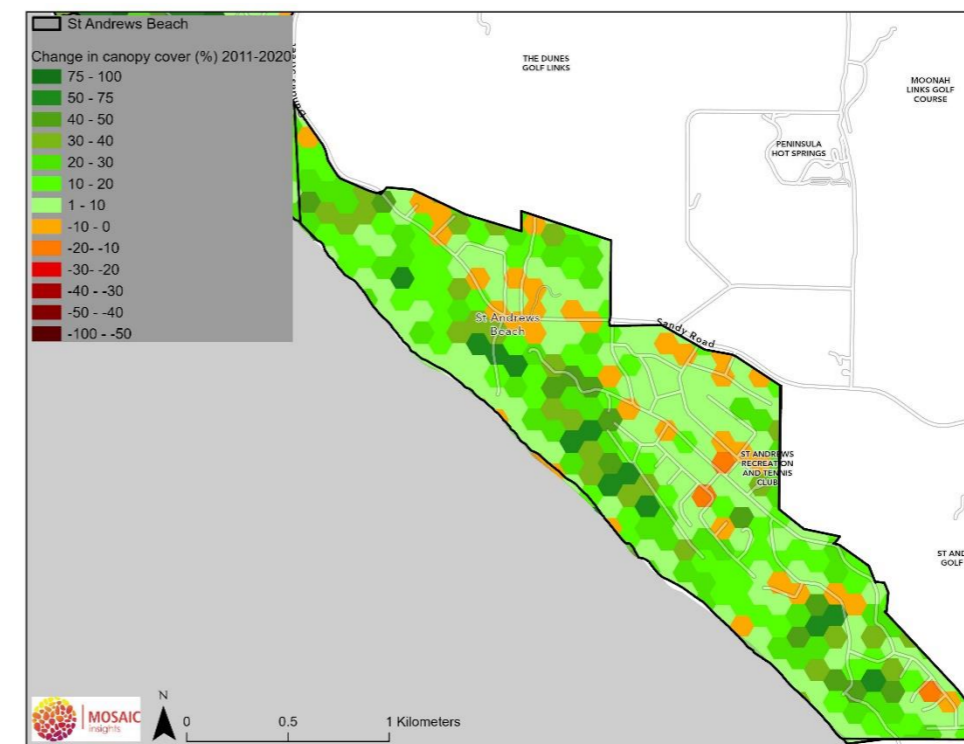


Figure 81. St Andrews Beach - Change in canopy cover between 2011 and 2020

Tootgarook

Variable	Value
Area of township (ha)	339.3
Area of canopy 2020 (ha)	113.7
Canopy cover 2020 (%)	33.5
Change in canopy cover 2011-2020	Increase of 2.2%
Heat vulnerability index (1-5, 5 most vulnerable) and township rank (1-28, 1 most vulnerable)	3.36 – Rank 4
2021 population and township rank (1-28, 1 most dense)	3,877– Rank 15
Prioritisation rank (based on existing canopy cover and heat vulnerability index, 1-28, 1 highest priority)	Rank 9

Tree canopy cover

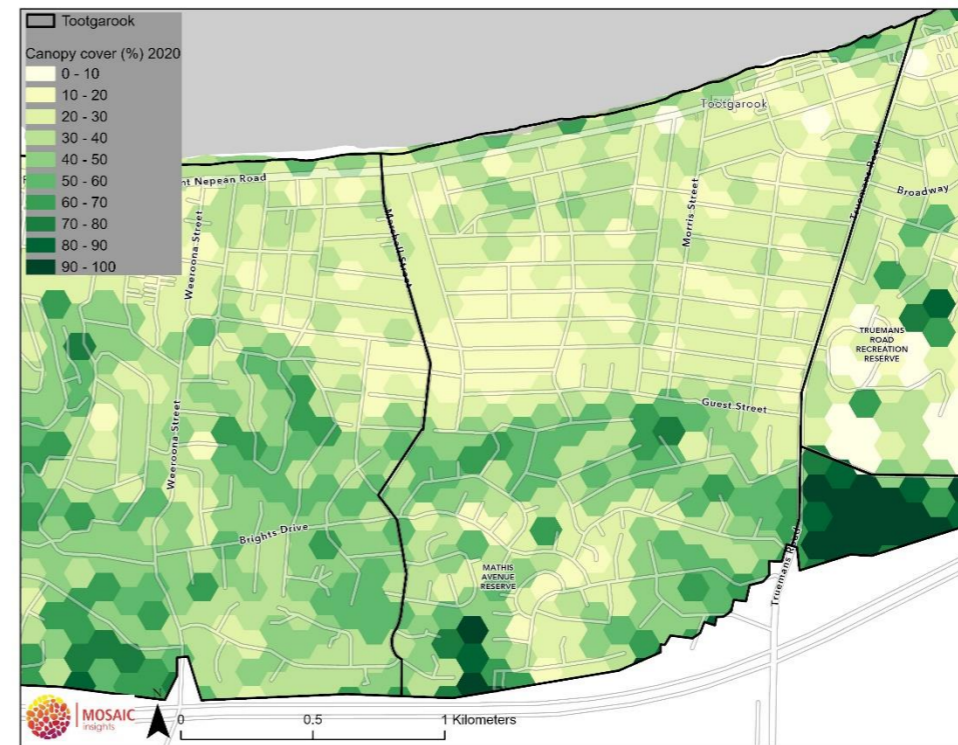


Figure 82. Tootgarook - Canopy cover in 2020

Heat vulnerability index

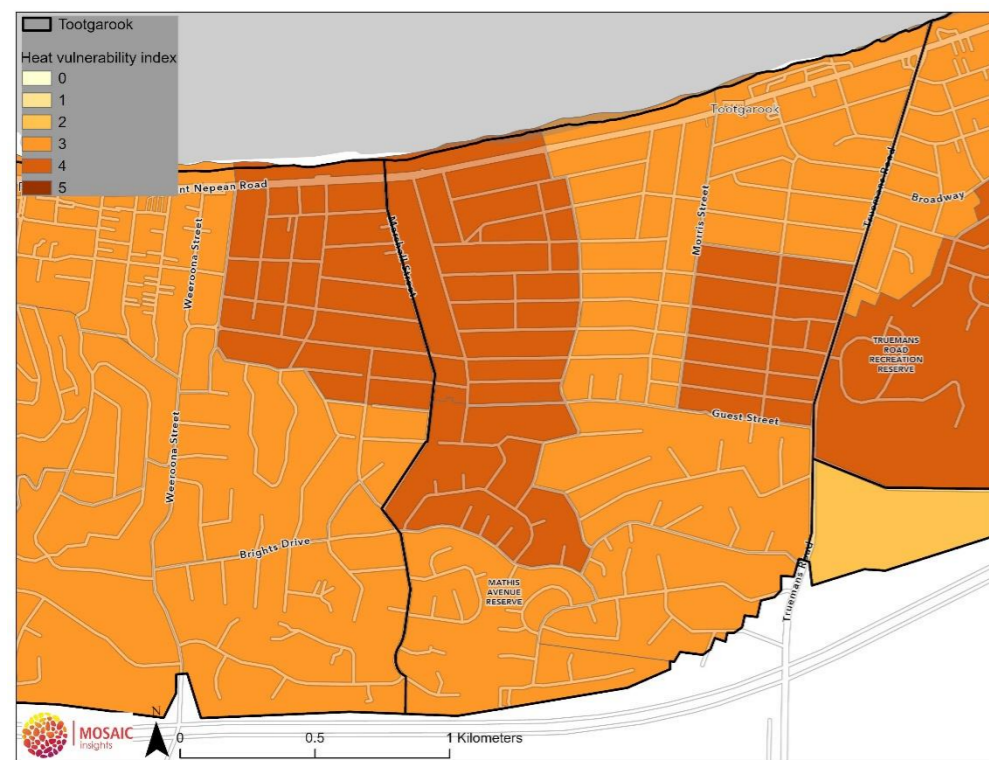


Figure 83. Tootgarook - Heat vulnerability index (2018)

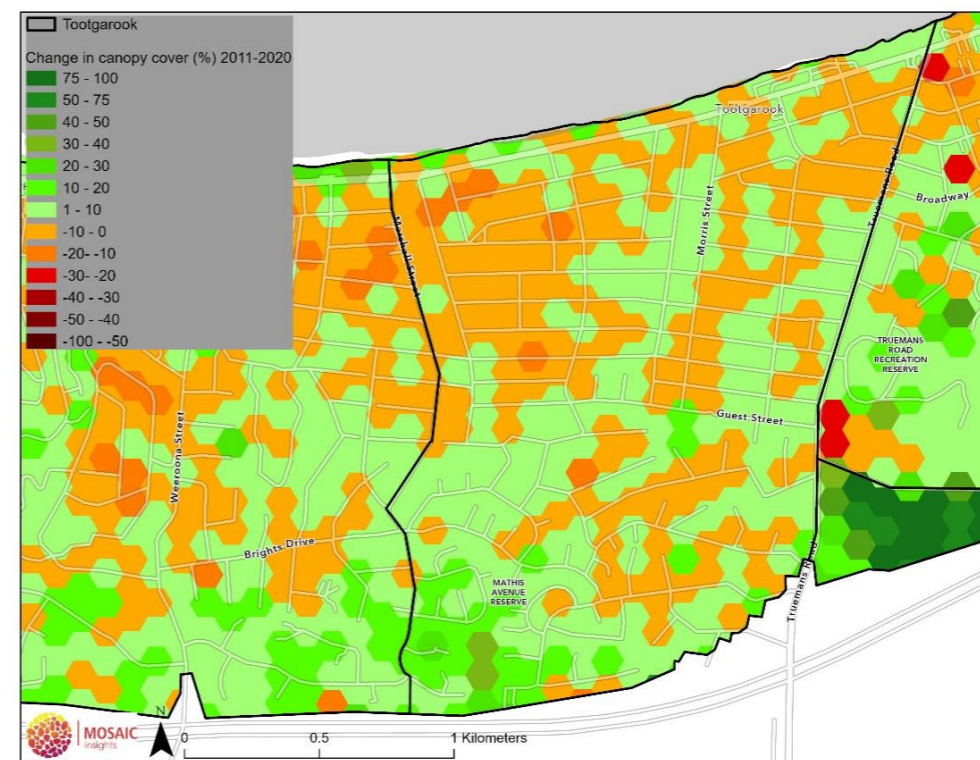


Figure 84. Tootgarook - Change in canopy cover between 2011 and 2020

Tyabb

Variable	Value
Area of township (ha)	1,566.2
Area of canopy 2020 (ha)	545.2
Canopy cover 2020 (%)	34.8
Change in canopy cover 2011-2020	Increase of 13.3%
Heat vulnerability index (1-5, 5 most vulnerable) and township rank (1-28, 1 most vulnerable)	1.88 – Rank 14
2021 population and township rank (1-28, 1 most dense)	3,916 – Rank 14
Prioritisation rank (based on existing canopy cover and heat vulnerability index, 1-28, 1 highest priority)	Rank 10

Tree canopy cover

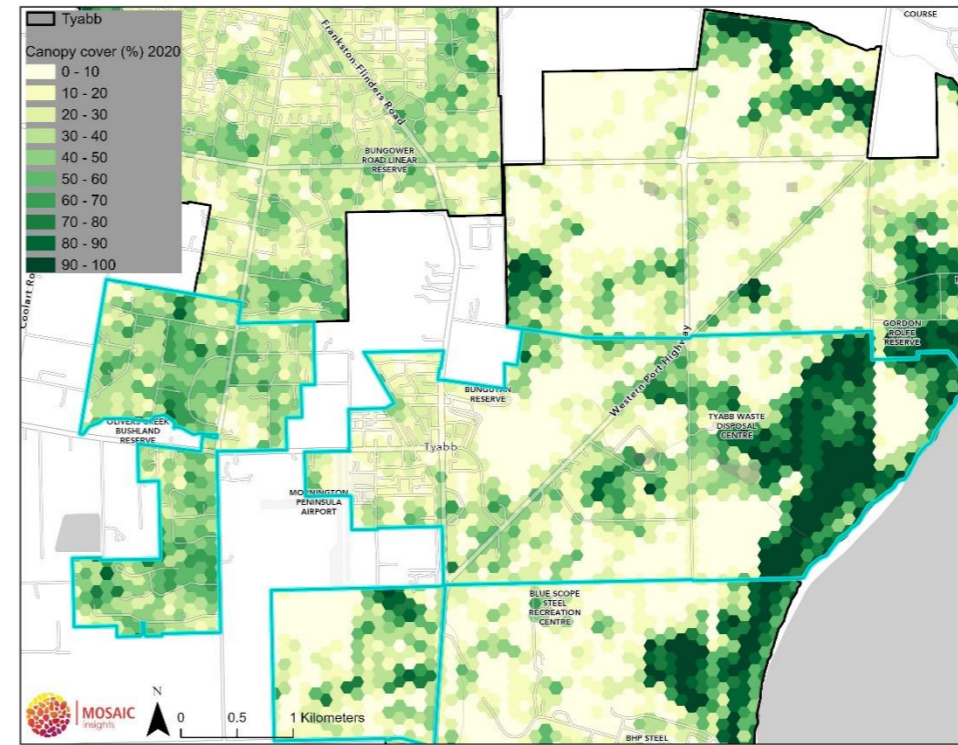


Figure 85. Tyabb - Canopy cover in 2020

Heat vulnerability index

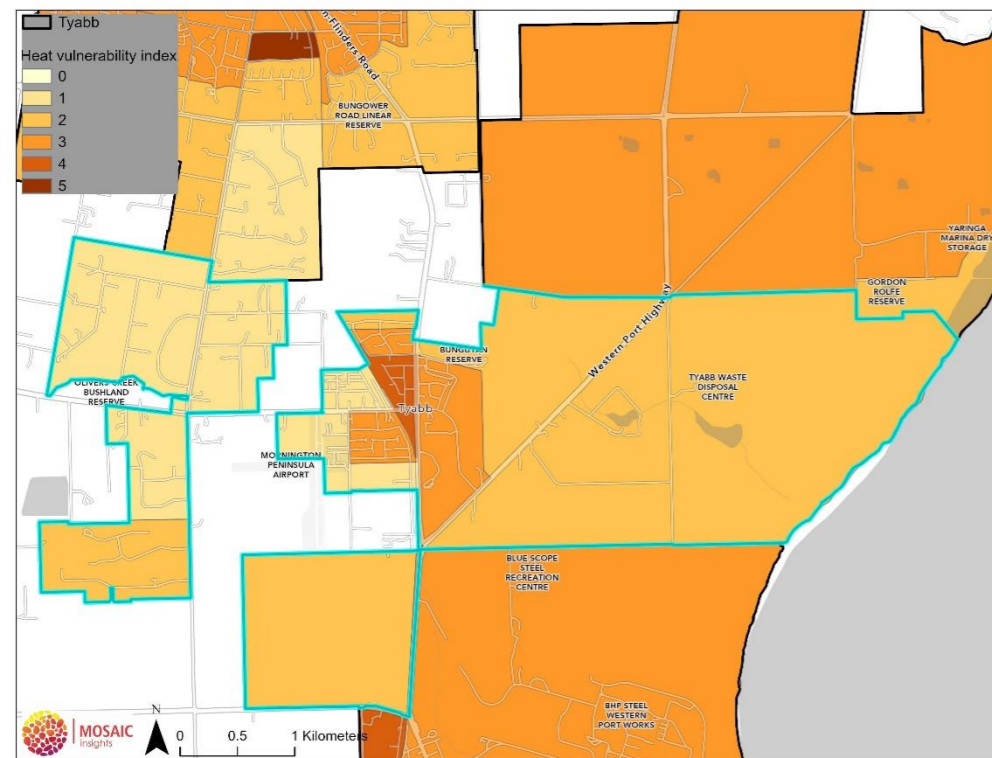


Figure 86. Tyabb - Heat vulnerability index (2018)

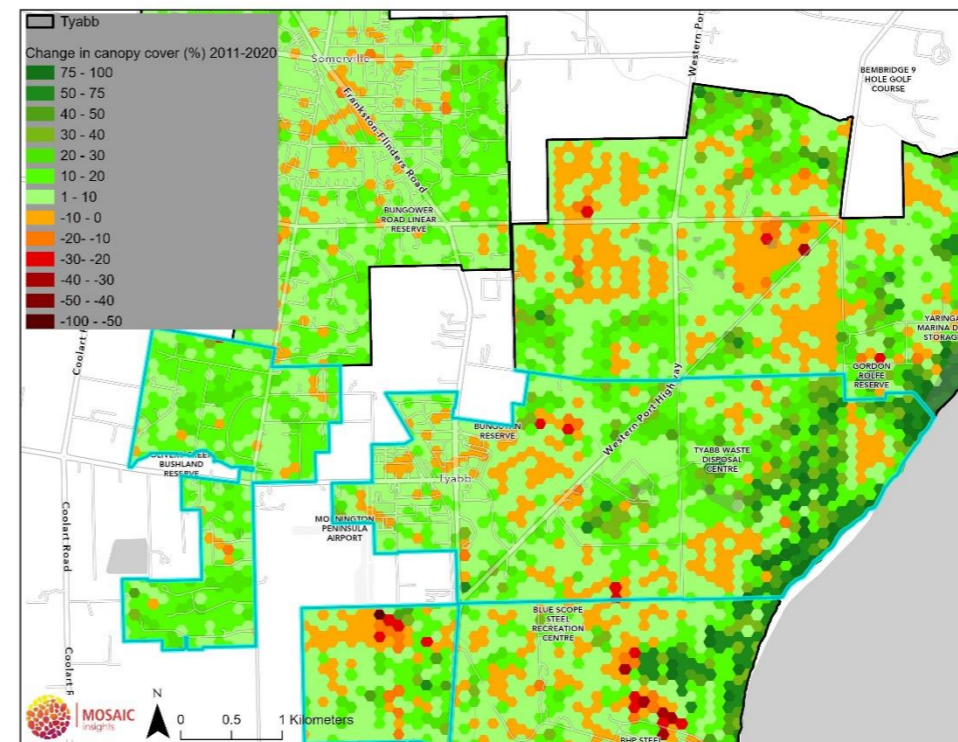


Figure 87. Tyabb - Change in canopy cover between 2011 and 2020