



## rosebud coastal management plan

prepared by **hansen** partnership for mornington peninsula shire

may 2015

aila victoria medal 2008  
australian institute of  
landscape architects  
(victorian state group)

consultant planner of the year 2006  
consultant planner of the year 2005  
planning institute of australia  
(victoria division)



hansen partnership pty ltd  
**melbourne** | vietnam

level 4 136 exhibition st  
melbourne vic 3000  
t 03 9654 8844 f 03 9654 8088  
e [info@hansen-online.com.au](mailto:info@hansen-online.com.au)  
w [hansen-online.com.au](http://hansen-online.com.au)  
ABN 20 079 864 716 | ACN 079 864 716



## table of contents

<b>1</b>	<b>executive summary</b>	<b>4</b>
<b>2</b>	<b>introduction</b>	<b>6</b>
2.1	Why this plan is important	8
2.2	management plan area	8
2.3	foreshore management arrangements	8
2.4	plan preparation process	10
2.5	purpose and structure of the plan	10
2.6	context of the plan	11
<b>3</b>	<b>strategic direction and actions</b>	<b>12</b>
3.1	foreshore vision	12
3.2	response to vision - overview of coastal management plan	12
3.3	natural environment	18
3.4	recreational facilities and activities	25
3.5	access and movement	37
3.6	safety and risk management	43
3.7	signage and public awareness	46
3.8	coastal infrastructure and facilities	49
3.9	climate change	52
3.10	social and cultural heritage	54
<b>4</b>	<b>business plan</b>	<b>58</b>
4.1	introduction	58
4.2	Income	59
4.3	expenditure	59
4.4	reporting requirements and accountability	60
4.5	administration	60

## table of figures

- figure 1 – rosebud foreshore reserve area
- figure 2 – rosebud foreshore reserve area nodes
- figure 3 – rosebud foreshore planning units
- figure 4 – rosebud foreshore planning units
- figure 5 – rosebud foreshore planning units
- figure 6 – concept plan rosebud central activity node
- figure 7 – concept plan recreational node boneo road
- figure 8 – concept plan recreational node rosebud pier



## **appendices**

- appendix 1 - existing conditions maps
- appendix 2 - planning & legislative framework
- appendix 3 - maps of main actions

ISBN No:



## 1 executive summary

Rosebud was founded as a fishing village (Banksia Point) in the early 1850's and the relationship between the town and the coast has remained strong ever since. The promotion of foreshore camping in the early 19<sup>th</sup> century, and the "family safe" beach, established Rosebud as a popular summer holiday place, with the stands of banksia, sheoak and ti-tree maintaining a natural backdrop to the beach.

These elements - the natural environment, recreation and the relationship with the town itself – continue to be the major values of the Rosebud foreshore and increase in significance as both the local community and the population of Melbourne continue to grow, and with this growth the demand for coastal recreation.

In this context, the Rosebud Coastal Management Plan (CMP) has been prepared to provide strategic guidance for the use, development and management of the Rosebud Foreshore Reserve. The CMP has also been prepared in conjunction with the *Draft Rosebud Activity Centre Structure Plan*, to encourage coordinated planning for the Rosebud township and foreshore, particularly in relation to the location of foreshore activity and recreation nodes.

A vision for the Rosebud foreshore reserve has been developed through consultation and reflects the aspirations of the community and other key stakeholders.

The Vision is summarised as follows:

*The Rosebud foreshore reserve will be a highly valued environmental and recreational asset for both the local community and visitors and will form an integral component of Rosebud's character.*

*The Foreshore will be maintained and improved through better management practices that will ensure the protection and enhancement of ecological values that provide essential flora and fauna habitat.*

*The community's understanding of the foreshore's values will be enhanced and the foreshore reserve will be better integrated with the Rosebud Activity Centre via improved and well defined links.*



*The role of the foreshore as a recreation area will also be strengthened, consistent with its designation as a Coastal Recreation Zone, while impacts on the coastal environment will be minimised.*

*Overall, the Rosebud foreshore will reflect a careful balance between biodiversity conservation and the accommodation of increased demands for recreational pursuits, in the context of the potential threats of climate change.*

In planning to achieve this vision, the CMP builds on the foundation of the Mount Eliza to Point Nepean Coastal Action Plan by designating areas as Activity Nodes, Recreation Nodes, Recreation areas or Sensitive Areas. In this way, different areas of the foreshore are allocated different roles so that net community benefit is maximised overall. This is consistent with the principles of the Victorian Coastal Strategy.

The designation of different areas for different roles enables confidence in long-term investment of time and money by Council, as the public land manager, and the community groups that contribute to these areas, particularly in terms of environmental management and restoration.

The combined area of the Activity and Recreation Nodes is proportionally very small ( less than approximately 12.5 % of 80 hectare foreshore area), but these nodes will provide a focus for managing recreational demand, establishing a strong image and enabling Rosebud to perform its intended role as the regional centre for the southern peninsula.

The CMP provides an analysis of existing conditions and management issues, and identifies objectives and actions based on the following themes:

- Natural environment;
- Recreational facilities and activities;
- Access and movement;
- Safety and risk management;
- Signage and public awareness;
- Coastal infrastructure;
- Climate change; and
- Social and cultural heritage.

Key actions include:

- Enhancing the Rosebud Central Activity Node by accommodating a new public open space area (ultimately replacing the relocated Rosebud Bowling Club), which is to be developed as a significant community meeting and recreation facility and tourism destination.
- Enhancing Recreation Nodes near Boneo Road, Rosebud Pier and the McCrae Lighthouse to cater for additional recreational facilities, based on new master plans.
- Review of management arrangements for camping areas.
- Conservation measures to better protect the biodiversity values of the foreshore.
- Enhancing the Bay Trail.

In regard to climate change, the assessment of coastal vulnerability is still emerging for the majority of the Port Phillip Bay coastline, through programs such as the State government's Future Coasts and the Commonwealth funded Adaptation Pathways project. However, an assessment of the Rosebud Central



Activity Node highlights that this area is unlikely to be at significant risk over the next 50 years, mainly due to the adjacent offshore shelf in the Bay. This provides a basis for decision making that balances the precautionary approach with the notion of acceptable risk and the normal depreciation of assets.

The CMP includes a 3-year Business Plan for the Rosebud Foreshore Reserve with further information on income and expenditure. The CMP is to be reviewed after 3 years.



## 2 introduction

### 2.1 why this plan is important

The Rosebud Foreshore Reserve is recognised for its environmental and visual qualities and contains sites of cultural, heritage, biodiversity, recreational and scenic importance.

Some of the key attributes of the Rosebud Foreshore Reserve include:

- **Beaches** – which are shallow and popular for swimming and other water-based activities during summer months. This includes some boating activities.
- **Parks** – provide areas for informal recreation and include playgrounds, shelters, barbeques and amenities.
- **Camping** – the Rosebud Camping and Caravan Park provides over 650 caravan and camping sites during holiday periods.
- **Rosebud pier** – a landmark along the beaches of the foreshore that provides panoramic views of the coast and opportunities for walking and fishing.
- **Community facilities** – which include the Rosebud Memorial Hall and the Sound Shell,
- **Recreational and sporting clubs** – including yacht and lifesaving clubs,
- **McCrae Lighthouse** – a heritage site which once guided mariners through the South Channel on the eastern side of Port Phillip Bay.
- **Bathing boxes** – scattered along the foreshore, some of which are of aesthetic and historic significance.
- **Vegetation** – the foreshore contains significant areas of remnant coastal vegetation. The flora plays a significant role both locally and regionally. It supports a relatively extensive though highly modified Coast Banksia Woodland community, an ecosystem of extremely restricted distribution. It is also a significant habitat for wildlife.



The foreshore is first and foremost the natural interface between land and water. The value of this feature is becoming increasingly important with the predicted advent of sea-level rise.

It is a major environmental asset with valuable vegetation that provides a habitat for wildlife.

It is an important area of public open space for the local communities and for the wider population of the southern peninsula. It accommodates a substantial portion of community and recreational activity and contributes greatly to the character of the township.



It is popular throughout the year, but also has a strong seasonal holiday focus. The foreshore attracts large visitor numbers in summer. During the summer peak a greater demand is placed on the recreational opportunities provided by the foreshore and the supporting infrastructure, including the car parking areas. The visitor catchment extends across the wider Melbourne metropolitan area.

The resident population of the southern peninsula is expected to increase in the coming years. Similarly, the number of visitors is expected to increase, both as a result of a growing Melbourne population and improved access to the Peninsula. The foreshore will see substantial additional demands for recreational activities.

The management of the foreshore is dominated by the need to balance over time:

- the environmental values of the area with the demand for recreational activities.
- the demand for public open space by the local community and the demand for visitor/tourism facilities by the wider community.

The importance of this plan lies in how this balance can be achieved in the face of future growth pressures from both the local and the visitor/tourism communities, and in the context of the threats of climate change.

## 2.2 management plan area

The Rosebud Foreshore Coastal Management Plan area covers the coastal Crown Land Reserve that includes foreshore areas adjacent to Rosebud West (in part), Rosebud and McCrae. The area is approximately 6 kilometres in length and is illustrated in Figure 1.



## 2.3 foreshore management arrangements

The land management arrangements for the Rosebud Foreshore Reserve are as follows:

- The Rosebud Foreshore is a permanent reserve for public purposes under the Crown Land (Reserves) Act 1978.
- The Mornington Peninsula Shire Council has been appointed as the Committee of Management under the Crown Land (Reserves) Act 1978 to manage the reserve in accordance with the reservation status under the provisions of that Act.
- This Coastal Management Plan only applies to the Rosebud Foreshore Reserve. However, some sections of what is generally considered foreshore land are located within the road reserve of Point Nepean Road. Mornington Peninsula Shire Council is the responsible authority for the management of the roadside in these areas. These sections are effectively managed by Council as part of the foreshore.
- The Mornington Peninsula Shire Council has status as the public land manager under the Mornington Peninsula Planning Scheme.
- Parks Victoria has been appointed as the Committee of Management for the Rosebud Pier.



legend

rosebud foreshore reserve boundary



# rosebud coastal management plan

## foreshore area



Project Ref: 06.374  
 Dwg No.: LCD-001  
 Scale: 1:20,000@A3  
 Date: 21.10.11  
 Revision: C

hansen partnership Pty Ltd  
 melbourne | sydney | vietnam  
 level 4 136 exhibition st  
 melbourne vic 3000  
 t 61 3 9654 8844 f 61 3 9654 8088  
 e info@hansen-online.com.au  
 w hansen-online.com.au

figure 1



## 2.4 plan preparation process

This plan has been prepared by Hansen Partnership, in conjunction with Village Well, ARUP, Charter Keck Cramer, Ecology Partners and Practical Archaeology Services; as commissioned by Mornington Peninsula Shire Council.

A Draft Rosebud Coastal Management Plan and a Draft Rosebud Activity Centre Structure Plan were developed in tandem to achieve an integrated approach to both areas.



Initially, an Issues and Opportunities Report provided a summary of both existing conditions and the issues and opportunities that have the potential to shape the Structure Plan and Coastal Management Plan. Community consultation was a key factor in the preparation of the report. Consultation workshops were held with various stakeholders and community groups.

A Vision and Objectives Statement (VOS) was prepared to provide direction for the preparation of plans for the future of the Rosebud Foreshore Reserve and Rosebud Activity Centre. The VOS identified the overall vision statement and provided a series of objectives to achieve this vision.

The Conceptual Scenario Report (CSR) outlined a series of ideas for the future of Rosebud and its foreshore in order to achieve the VOS. The VOS and CSR were presented to the community and workshops were organised to obtain feedback on the vision and each of the ideas from the CSR.

Further community input was obtained on the Draft Rosebud Coastal Management Plan through a public exhibition process and community workshops. A review of community feedback has informed the preparation of this Coastal Management Plan.

## 2.5 purpose and structure of the plan

The CMP is a guide for decisions about the use, development and management of the Rosebud foreshore that is shared between the community, the Department of Environment, Land, Water and Planning and Mornington Peninsula Shire.

To this end the plan establishes a long-term policy framework that includes:

- the vision and objectives for the management of the Rosebud foreshore.
- actions to protect and enhance its environmental, heritage and recreational values over the next 3 years and beyond.
- a 3 year business plan that links actions with income and expenditure.

The structure of the CMP is based on the following.

First the plan designates sections of the foreshore as Activity Nodes, Recreation Nodes, Recreation areas or Conservation Areas (planning units).

This is based on a combination of existing conditions, patterns of land use and infrastructure, the extent to which an area has been modified and habitat/environmental values. In this way, different areas of the foreshore are allocated different roles.



The plan then addresses a number of themes:

- Natural environment;
- Recreational facilities and activities;
- Access and movement;
- Safety and risk management;
- Signage and public awareness;
- Coastal infrastructure;
- Climate change; and
- Social and cultural heritage.

For each theme an overview of existing conditions and management issues is provided.

Then, objectives for each theme are identified. These respond to both the vision and the analysis of management issues.

The objectives are listed in tables that also detail a range of actions that give effect to the objectives. Each action is given a reference number and is linked to a map in Appendix 3, to provide a spatial context for actions.

For each action a priority level and a timeline is given:

- High – to be undertaken within 1 to 2 years or on an ongoing basis.
- Medium – to be undertaken within 2 - 3 years.
- Low – to be considered in the longer term – at least more than 3 years.

The timelines apply from the date of Ministerial Approval of this Plan.

In addition, for each action the applicable area/planning unit and the responsible lead agency/stakeholders are specified.

## **2.6 context of the plan**

This Coastal Management Plan has been prepared on the basis of an extensive analysis of the existing conditions of the Rosebud foreshore and the management issues it faces. Existing conditions maps are included in Appendix 1.

It also reflects the relevant provisions of the legislative and policy framework that applies to the coast. This is summarised in Appendix 2.



## 3 strategic direction and actions

### 3.1 foreshore vision

The vision for Rosebud has been developed through consultation and reflects the aspirations of the community and other key stakeholders.

*The Rosebud foreshore reserve will be a highly valued environmental and recreational asset for both the local community and visitors and will form an integral component of Rosebud's character.*

*The Foreshore will be maintained and improved through better management practices that will ensure the protection and enhancement of ecological values that provide essential flora and fauna habitat.*

*The community's understanding of the foreshore's values will be enhanced and the foreshore reserve will be better integrated with the Rosebud Activity Centre via improved and well defined links.*

*The role of the foreshore as a recreation area will also be strengthened, consistent with its designation as a Coastal Recreation Zone, while impacts on the coastal environment will be minimised.*

*Overall, the Rosebud foreshore will reflect a careful balance between biodiversity conservation and the accommodation of increased demands for recreational pursuits, in the context of the potential threats of climate change.*

### 3.2 response to the vision – overview of coastal management plan

To achieve this vision and a careful balance between biodiversity conservation and the accommodation of increased demands for recreational pursuits, this CMP builds on the foundation of the Mount Eliza to Point Nepean Coastal Action Plan by designating areas as Activity Nodes, Recreation Nodes, Recreation Areas or Sensitive Areas.

In this way, different areas of the foreshore are allocated different roles so that net community benefit is maximised overall. This is consistent with the principles of the Victorian Coastal Strategy.

The types of areas identified are:

- Activity Node – Rosebud Central Activity Node - location of the main recreational, community and related activities within the foreshore; linked to the activity centre across Point Nepean Road.
- Recreation Nodes – at Boneo Road, Rosebud Pier and McCrae Lighthouse - location of important recreational and related activities; linked to activity centres across Point Nepean Road.
- Recreation Areas – mainly Camping Grounds - areas used as camping grounds largely during holiday periods and general parkland at other times of the year.
- Sensitive (Conservation) Areas – Chinaman's Creek, all Coastal Dune Vegetation areas and all Beaches - areas protected from the development of recreational infrastructure.



The above areas are identified in Figures 2, 3, 4 and 5.

The designation of different areas for different roles enables confidence in long-term investment of time and money by Council, as the public land manager, and the community groups that contribute to these areas, particularly in terms of environmental management and restoration.

The Rosebud Central Activity Node is located opposite the eastern end of the commercial area. This Activity Node is the main area designated to accommodate change as part of this CMP. Part of this currently is the location of the Rosebud Bowls Club, nominated for a new large passive open space area that is intended to perform a central public open space function and to act as a tourism destination. The development of this Activity Node aims to provide a focus for meeting increasing recreational and community activity demands, while containing the impact of such demands to a relatively small area. The location on the foreshore aims to establish a positive landmark for Rosebud in a prominent and accessible location, in conjunction with complementary plans for Point Nepean Road and the adjacent commercial area. This CMP includes a Concept Plan that shows the basic layout for the activity node. A detailed master plan, to be prepared at a later stage with community consultation, is to detail how this outcome can best be achieved. Similarly, a separate process that includes community consultation will need to be undertaken for the detailed plans for the central public open space area (once a suitable relocation of the Bowls Club has been arranged).

The three Recreation Nodes near Boneo Road, Rosebud Pier and the McCrae Lighthouse reflect existing concentrations of recreational facilities and are located opposite to and are linked with commercial areas along Point Nepean Road. This CMP includes Concept Plans and project aims that give direction to the development of these Recreation Nodes. Detailed master plans, to be prepared at a later stage with further community consultation, are to show how this can best be achieved.

Increased demand for major recreational facilities is to be met in the Activity Node and three Recreational Nodes.

The Recreation Areas are intended to continue to accommodate dispersed low intensity and informal recreational activities. The camping areas are to be retained within the Recreation Areas, with a range of measures aimed at improving their natural features and enhancing the management of these areas, in part to make them more suitable as parkland for the resident population outside of the peak holiday periods. Similarly, the beaches are to be preserved in as much of a pristine state as possible. Importantly, no new recreational boating facilities are envisaged, notwithstanding increasing demand for boating.

The Sensitive Areas are primarily intended to provide for conservation of environmental values. The coastal dune areas and the Chinaman's Creek area are to be preserved as much as possible, providing valuable vegetation and a unique habitat for wildlife. Furthermore a review of aboriginal and European heritage elements is to be undertaken.

Across the CMP area a range of measures are included to cover access arrangements, safety and signage. This is to include the preparation of a car parking plan and a review of the bay trail.

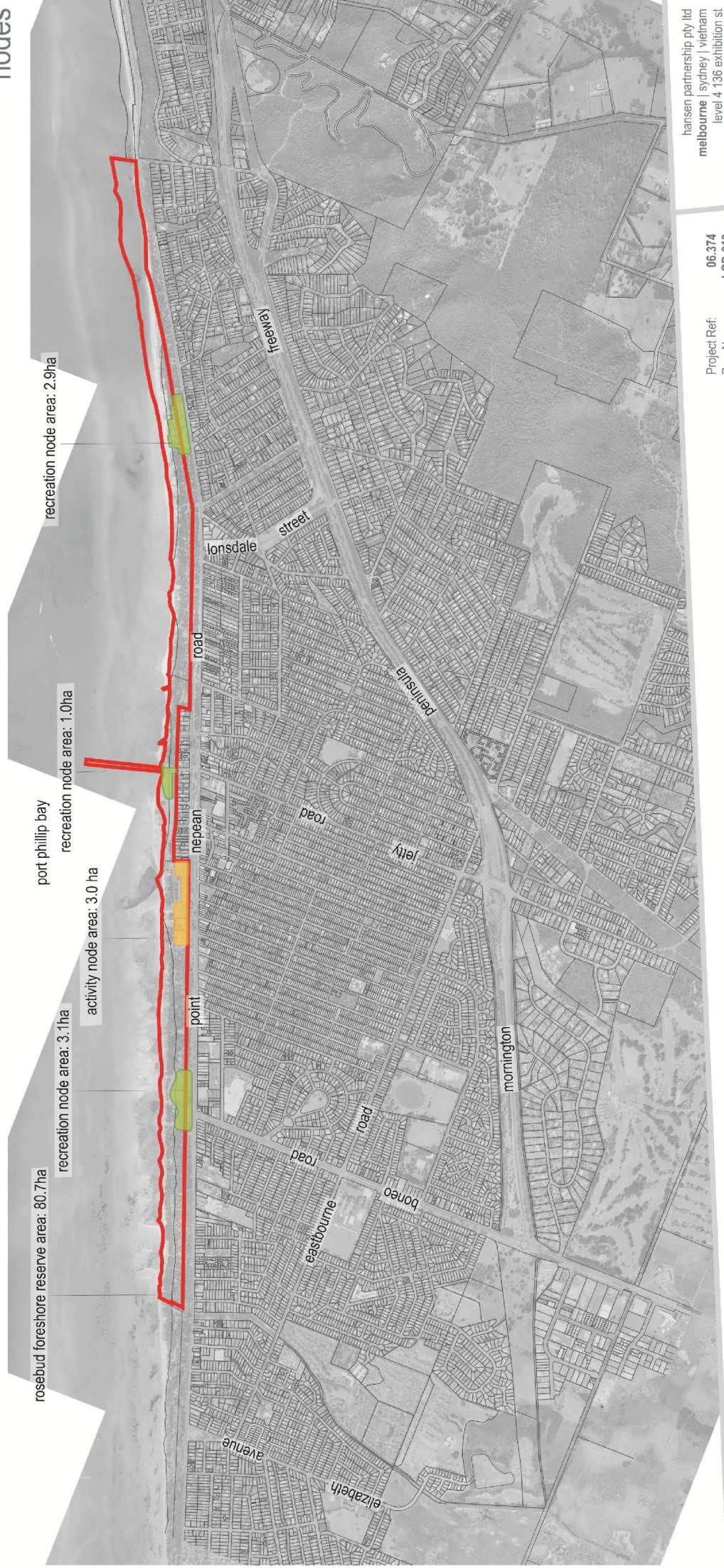
The long term threat of sea-level rise due to climate change is also acknowledged. At this stage, further studies to assist the understanding of sea-level rise effects are to be undertaken.



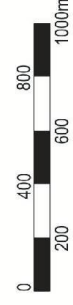
# rosebud coastal management plan

## foreshore area nodes

- rosebud foreshore reserve boundary
- activity node
- recreation nodes



Project Ref: 06.374  
 Dwg No.: LCD-019  
 Scale: 1:20,000@A3  
 Date: 21.10.11  
 Revision: B



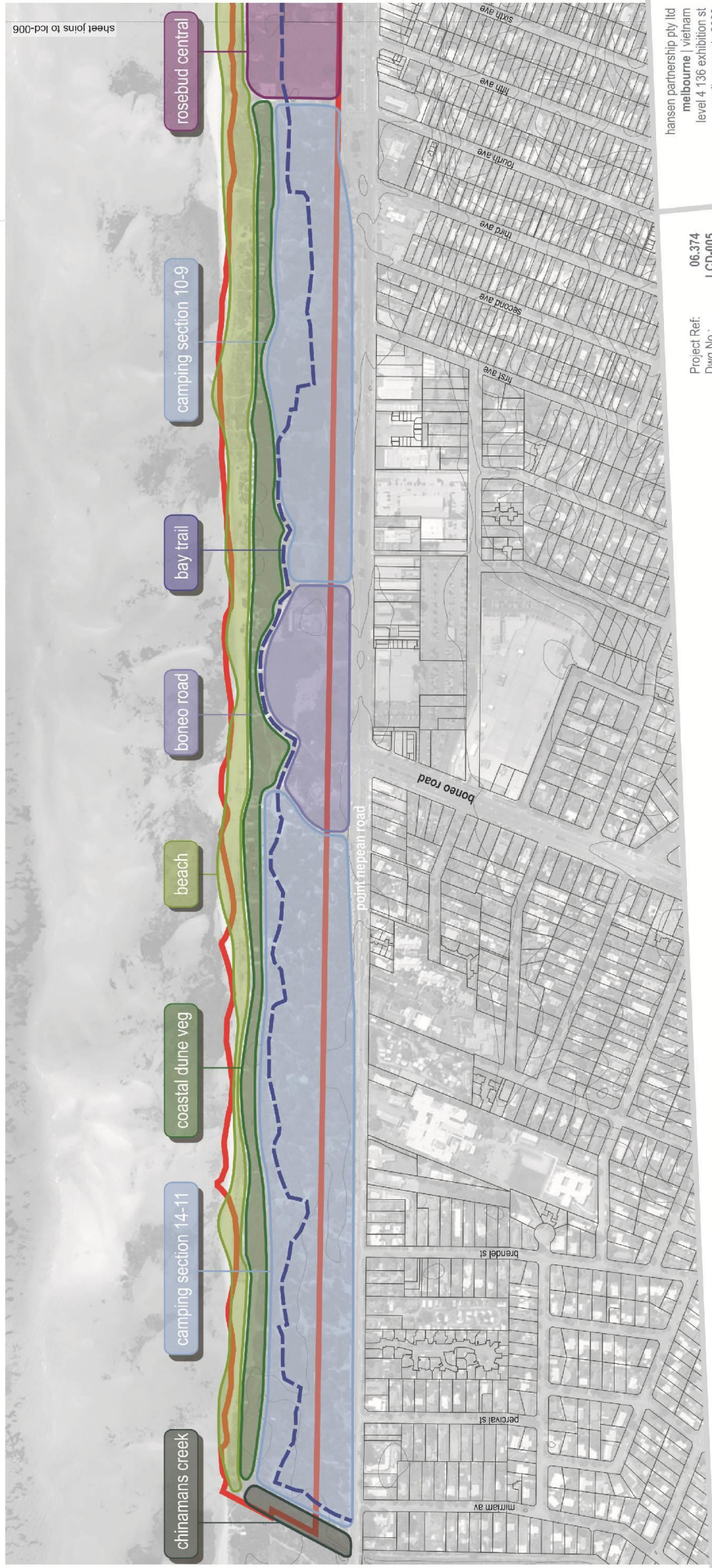
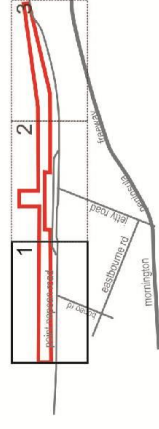
hansen partnership pty ltd  
 melbourne | sydney | vietnam  
 level 4 136 exhibition st  
 melbourne.vic 3000  
 t 61 3 9654 8644 f 61 3 9654 8088  
 e info@hansen-online.com.au  
 w hansen-online.com.au

figure 2



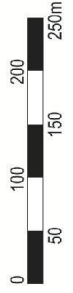
# rosebud coastal management plan

## planning units sheet 1



- legend**
- activity node
  - recreation nodes - parkland
  - recreation areas - camping
  - bay trail
  - sensitive areas
  - sensitive areas - coastal dune vegetation
  - sensitive areas - beach
  - foreshore reserve boundary

Project Ref: 06.374  
 Dwg No.: LCD-005  
 Scale: 1:5,000@A3  
 Date: 21.10.11  
 Revision: F



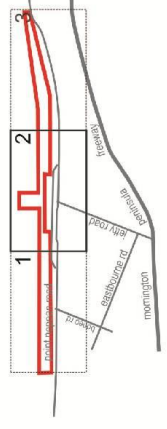
hansen partnership pty ltd  
 melbourne | vietnam  
 level 4 136 exhibition st  
 melbourne vic 3000  
 t 61 3 9654 8844 f 61 3 9654 8088  
 e info@hansen-online.com.au  
 w hansen-online.com.au

figure 3

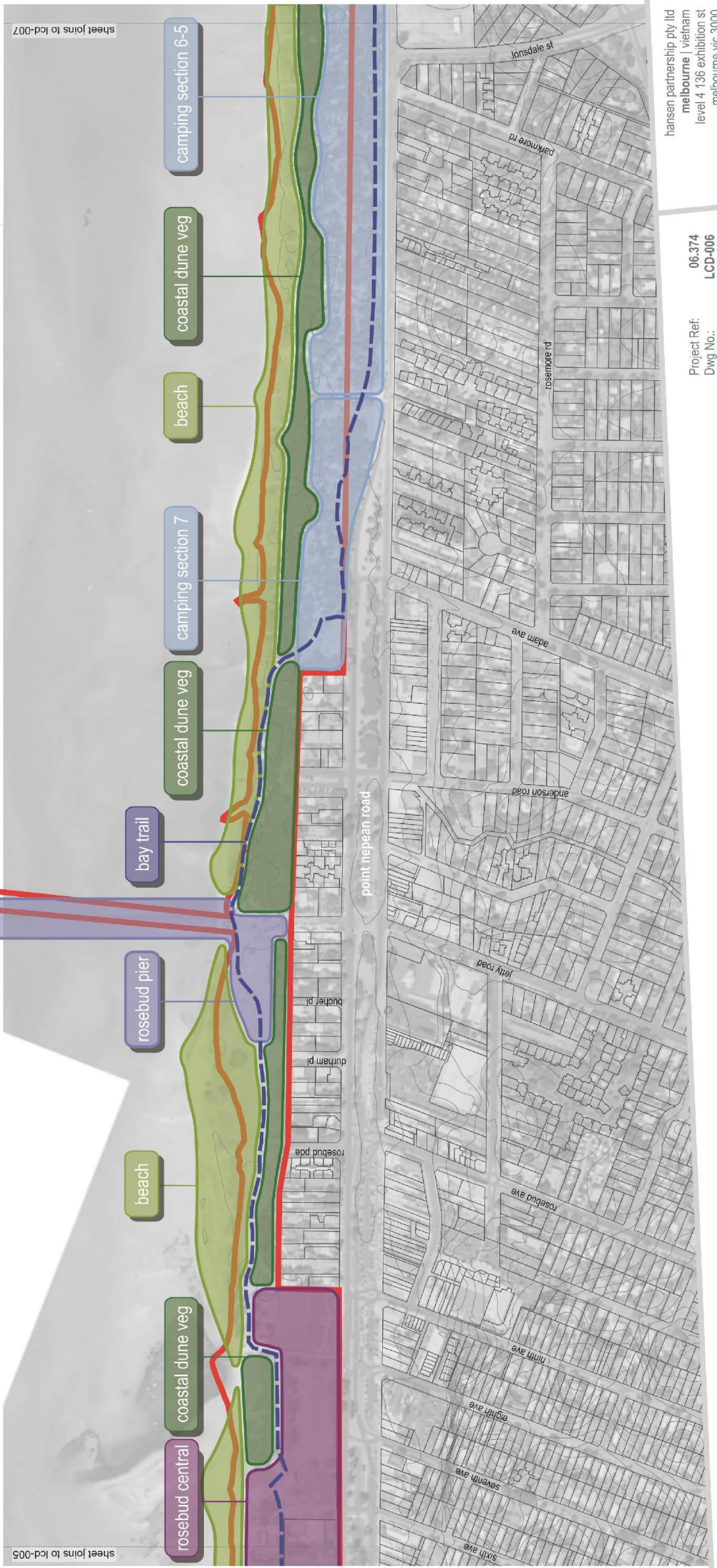


# rosebud coastal management plan

planning units  
sheet 2



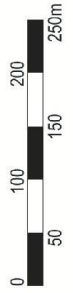
- legend**
- activity node
  - recreation nodes - parkland
  - recreation areas - camping
  - bay trail
  - sensitive areas - coastal dune vegetation
  - sensitive areas - beach
  - foreshore reserve boundary



sheet joins to lcd-005

sheet joins to lcd-007

Project Ref: 06.374  
 Dwg No.: LCD-006  
 Scale: 1:5,000@A3  
 Date: 21.10.11  
 Revision: F



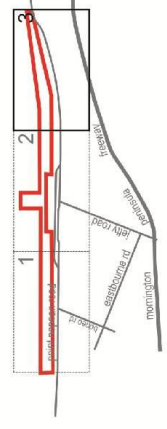
hansen partnership pty ltd  
 melbourne | vietnam  
 level 4 136 exhibition st  
 melbourne vic 3000  
 t 61 3 9654 8844 f 61 3 9654 8088  
 e info@hansen-online.com.au  
 w hansen-online.com.au

figure 4

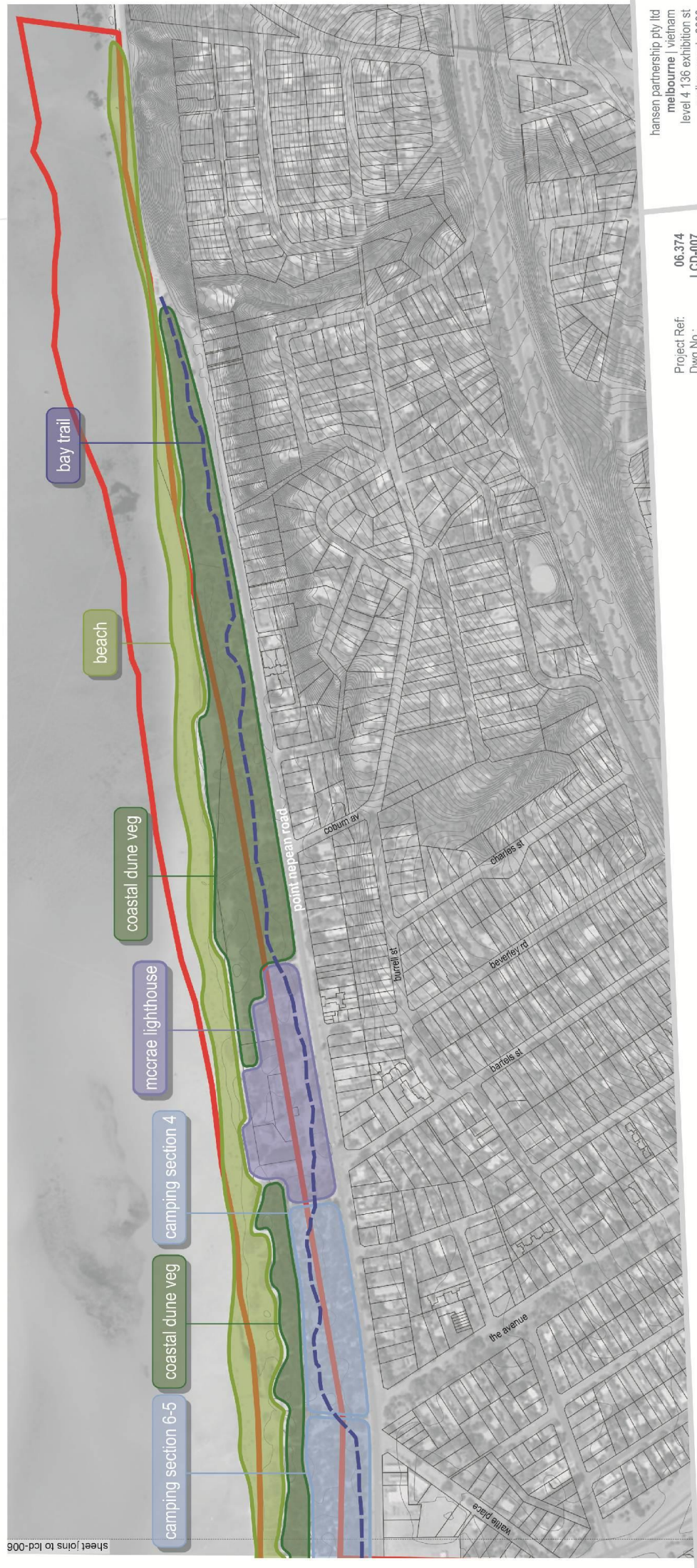


# rosebud coastal management plan

planning units sheet 3

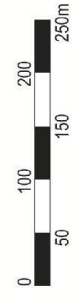


- recreation nodes - parkland
- recreation areas - camping
- bay trail
- sensitive areas - coastal dune vegetation
- sensitive areas - beach
- foreshore reserve boundary



sheet joins to lcd-006

Project Ref: 06.374  
 Dwg No.: LCD-007  
 Scale: 1:5,000@A3  
 Date: 21.10.11  
 Revision: F



hansen partnership pty ltd  
 melbourne | vietnam  
 level 4 136 exhibition st  
 melbourne vic 3000  
 t 61 3 9654 8844 f 61 3 9654 8088  
 e info@hansen-online.com.au  
 w hansen-online.com.au

figure 5



### 3.3 natural environment

#### 3.3.1 existing conditions

The identification of key ecological values within the Rosebud Foreshore Reserve is based on a site assessment, review of previous flora and fauna investigations and information provided by local field naturalists and Council Officers.

The key findings include:

- At least 157 taxa of plants (predominantly exotic) have been recorded in the Rosebud Foreshore Reserve. Of these, 31 are of regional conservation significance.
- The majority of the Rosebud Foreshore Reserve supports introduced vegetation; however there are five remnant Ecological Vegetation Classes (EVC) from the Gippsland Plain bioregion: Coast Banksia Woodland, Coastal Dune Grassland, Coastal Dune Scrub, Swamp Scrub and Estuarine Wetland.
- The Rosebud Foreshore Reserve supports a diversity of locally common fauna species. At least 79 terrestrial and five aquatic fauna species have been recorded.
- Indigenous vegetation is of local conservation significance as it provides habitat for fauna and is integral to the coastal corridor of vegetation.
- The foreshore provides habitat for a range of significant fauna species listed as threatened under the State Flora and Fauna Guarantee Act 1988 and/or threatened on the DELWP 'Advisory List of Threatened Vertebrate Fauna in Victoria' and thus the Rosebud Foreshore Reserve is of high regional conservation significance.
- Red-capped Plovers (listed as 'migratory' and 'marine' under the Environment Protection and Biodiversity Conservation Act 1999) have successfully nested and raised chicks on the beach between Rosebud Yacht Club and Rosebud Pier .
- Active management of Chinamans Creek and its immediate surrounds have been undertaken as part of the protection of the state significant Swamp Skink (listed as vulnerable under the DELWP 'Advisory List of Threatened Vertebrate Fauna in Victoria.' Chinamans Creek is of state significance due to the habitat it provides for the Swamp Skink (Yugovic & Williams, 2000).
- There is evidence of illegal vegetation removal occurring west of the Rosebud Pier, along the residential and foreshore interface.
- Coastal erosion has been occurring west of the Rosebud Pier and between McCrae beach and Anthony's Nose.





The Rosebud Foreshore Reserve contains a variety of landscape elements, which determine the visual character throughout. These are both natural and man-made and include:

- Three creeks which drain out into Port Phillip Bay. They are Chinaman's Creek, forming the western boundary of the Rosebud Foreshore Reserve, Coburn Creek, located east of the McCrae Lighthouse and Eyrie Creek, located towards Anthony's Nose.
- Sand dunes, which run parallel with the beach. These mark the transition between beach and the foreshore. Many of these dunes contain sensitive coastal vegetation and in some places are fenced for protection.
- Vegetation, typically comprising Coast Banksia Woodland, with a mixture both exotic and indigenous in origin. The vegetation provides a range of benefits including shade, protection from wind and sand stabilisation.
- Parks, which create open areas within the foreshore. These are predominantly lawn spaces some of which contain picnic areas and playgrounds.
- Roads, both sealed and unsealed.
- Car parks, which are also sealed and unsealed.
- Buildings, a variety of which are located throughout. These include toilet blocks within camping areas, community buildings and bathing boxes scattered along the beaches. The majority of the public buildings on the foreshore appear to date from the 1960's or earlier.
- A network of pedestrian tracks, including the major "Bay Trail", a shared pedestrian and bicycle path.
- The Rosebud Pier, which is a local landmark.



The visual character of the Rosebud Foreshore Reserve is generally characterised by:

- A linear strip of coastal scrub vegetation, with a general height of four metres. The vegetation strip acts as a visual barrier between the foreshore and the beach, but is critical to the foreshore environment, being an integral element of the coastal dune and providing important habitat value.
- The western end of the Rosebud Foreshore Reserve offers glimpses of the bay where there are gaps in the vegetation. The eastern end of the foreshore is characterised by denser vegetation which precludes views of the beach and Port Phillip Bay.
- Camping areas, which contain a mix of mown grasses with canopy trees and coastal scrub that provides a sense of enclosure.
- The parks scattered along the foreshore, which provide a break from the enclosed feel, however vegetation and dunes often prevent direct views to the beach.



- Colourful bathing boxes, which contribute to the visual character of the beaches.
- Buildings, fences and other structures within the Rosebud Foreshore Reserve that impact upon visual quality.

### 3.3.2 management issues

- Decline of existing flora and fauna in both extent and quality.
- Introduced flora species and environmental weeds threatening ecological integrity.
- Human disturbance to Red-capped plover nesting sites.
- Human disturbance to Swamp Skink habitat.
- Pest animals predated and competing with native wildlife.
- Recreational activities impacting on areas of natural regeneration and restoration priorities.
- Illegal vegetation removal, to maintain views to Port Phillip Bay from residential areas.
- The need for ecological fire management.
- Poor visual connections throughout the foreshore.
- Poor aesthetic quality of buildings and other structures.
- Desire for improved public views to water.





### 3.3.3 objectives and actions for the natural environment

Ref no.	Objectives	Actions	Priority and timelines	Planning unit	Responsibility to action
NE-1	To protect and enhance the ecological integrity of the indigenous coastal vegetation and habitat.	<ul style="list-style-type: none"> <li>▪ Undertake flora and fauna management as detailed within the <i>Mornington Peninsula Shire - Rosebud Foreshore Works Plan</i> for the following works areas:                             <ul style="list-style-type: none"> <li>▪ Chinaman's Creek;</li> <li>▪ Rosebud Friends Group Area;</li> <li>▪ Coastal Banksia Woodland Rehabilitation (including measures aimed at survival of mature Banksia Integrifolia); and</li> <li>▪ McCrae Coburn Creek.</li> </ul> </li> </ul>	High Ongoing	Sensitive areas	MPS Friends Groups
		<ul style="list-style-type: none"> <li>▪ Undertake flora and fauna management practices in partnership with the Friends of Chinaman's Creek, the Friends of Rosebud Foreshore and the Friends of McCrae Homestead.</li> </ul>	High Ongoing	Sensitive areas	MPS Friends Groups
		<ul style="list-style-type: none"> <li>▪ Establish protective fencing to Coastal Dune Vegetation Sensitive Areas along the interface with Camping Areas in camping sections 13-9 and 7-5.</li> <li>▪ Fencing should be undertaken in conjunction with the recommendations of the beach access audit. Refer to Action No. AM-1.</li> </ul>	High 1 – 2 years	Sensitive areas	MPS Friends Groups
		<ul style="list-style-type: none"> <li>▪ Monitor and evaluate flora restoration works.</li> </ul>	High Ongoing	Sensitive areas	MPS Friends Groups
NE-2	To eradicate and prevent the further introduction and spread of pest plants and animals.	<ul style="list-style-type: none"> <li>▪ Implement the weed eradication works as detailed within the <i>Rosebud Foreshore Works Plan</i>.</li> </ul>	High Ongoing	Sensitive areas	MPS
		<ul style="list-style-type: none"> <li>▪ Treat isolated infestations of highly invasive weeds in the high priority areas identified within the <i>Rosebud Foreshore Works Plan</i>. Weeds include:                             <ul style="list-style-type: none"> <li>▪ Sea Spurge;</li> <li>▪ English Ivy;</li> <li>▪ Juncus Acutus;</li> <li>▪ Sollya;</li> <li>▪ Boxthorn</li> <li>▪ Watsonia; and</li> <li>▪ Montbretia.</li> </ul> </li> </ul>	High Ongoing	Sensitive areas	MPS Friends Groups



Ref no.	Objectives	Actions	Priority and timelines	Planning unit	Responsibility to action
		<ul style="list-style-type: none"> <li>▪ Eliminate species that have the potential to hybridize with indigenous species of the same genera as identified within the <i>Rosebud Foreshore Works Plan</i>. Species include:                             <ul style="list-style-type: none"> <li>▪ Southern Mahogany; and</li> <li>▪ Giant Honey Myrtle.</li> </ul> </li> </ul>	High Ongoing	Sensitive areas	MPS Friends Groups
		<ul style="list-style-type: none"> <li>▪ Remove Cypress and Pine trees and revegetate with indigenous species. Refer to Action No. NE-1.</li> </ul>	Medium Ongoing	Sensitive areas	MPS Friends Groups
		<ul style="list-style-type: none"> <li>▪ Undertake staged removal of exotic canopy vegetation in accordance with the removal of senescing trees. Refer to Action No. SR-4.</li> </ul>	Low Ongoing	Recreation areas	MPS
		<ul style="list-style-type: none"> <li>▪ Monitoring and evaluate of weed removal works.</li> </ul>	High Ongoing	Sensitive areas	MPS Friends Groups
NE-3	To protect and enhance nesting sites for the Red-Capped Plover.	<ul style="list-style-type: none"> <li>▪ Erect fencing around nesting sites between Rosebud Yacht Club and the Rosebud Pier.</li> </ul>	High 1 – 2 years	Sensitive areas	MPS Friends Groups
NE-4	To protect and enhance habitat for the Swamp Skink.	<ul style="list-style-type: none"> <li>▪ Undertake flora, fauna and weed management for Chinaman's Creek as detailed within the <i>Rosebud Foreshore Works Plan</i>. Refer to Action No. NE-1.</li> </ul>	High Ongoing	Sensitive areas	MPS Friends Groups
		<ul style="list-style-type: none"> <li>▪ Relocate any logs from fallen Banksias within the Camping Grounds and public areas into the Chinaman's Creek Sensitive Area to enhance habitat for the Swamp Skink.</li> </ul>	High Ongoing	Sensitive areas	MPS
		<ul style="list-style-type: none"> <li>▪ As part of the redesign of camping grounds Action No. RF-7, remove and if practical relocate existing camping sites adjacent to Chinaman's Creek in order to revegetate and expand existing habitat area.</li> </ul>	Medium 2 – 3 years	Recreation areas Sensitive areas	MPS Friends Groups
NE-5	To eradicate and prevent the further introduction and spread of pest plants and animals.	<ul style="list-style-type: none"> <li>▪ Develop and implement a pest animal eradication and management program.</li> </ul>	High 1 – 2 years	Sensitive areas	MPS
NE-6	To balance the potentially competing demands of human activities and biodiversity conservation.	<ul style="list-style-type: none"> <li>▪ Ensure that no development is to occur within Sensitive Areas.</li> <li>▪ Bathing box use is not to occur to the detriment of Coastal Dune Vegetation Sensitive Areas.</li> <li>▪ Direct access to Bathing Boxes through Coastal Dune</li> </ul>	High Ongoing	Sensitive areas	MPS Bathing Box Owners



Ref no.	Objectives	Actions	Priority and timelines	Planning unit	Responsibility to action
		<ul style="list-style-type: none"> <li>▪ Vegetation Sensitive Areas is to be managed through the use of protective fencing. Refer to Action No. NE-1. Bathing Boxes are to be accessed via designated access ways only.</li> </ul>			
		<ul style="list-style-type: none"> <li>▪ Investigate removal or relocation of Bathing Boxes currently located within vegetated areas.</li> </ul>	Medium 2 – 3 years	Sensitive areas	MPS Bathing Box Owners
NE-7	To protect and enhance the ecological integrity of the indigenous coastal vegetation and habitat.	<ul style="list-style-type: none"> <li>▪ Monitor for ongoing illegal vegetation removal, with particular attention given to the vegetation along the residential interfaces.</li> </ul>	High Ongoing	Sensitive areas	MPS
NE-8	To protect and enhance the ecological integrity of the existing indigenous coastal vegetation and habitat.	<ul style="list-style-type: none"> <li>▪ Create and implement a Fire Management Plan building upon the recommendations of the <i>Rosebud Foreshore Works Plan</i>.</li> </ul>	Medium 2 years	Sensitive areas	MPS
NE-9	To protect and enhance the visual qualities of the foreshore.	<ul style="list-style-type: none"> <li>▪ In conjunction with the preparation of Master Plans for the Rosebud Central Activity Node, the Boneo Road Recreation Node, the Rosebud Pier Recreational Node and the McCrae Lighthouse Recreational Node (refer to Action No. RF-1), provide landscaping treatments which:                             <ul style="list-style-type: none"> <li>▪ Retain existing open character;</li> <li>▪ Utilise indigenous coastal vegetation;</li> <li>▪ Define entrances, both pedestrian and vehicular; and</li> <li>▪ Frame view lines into the node and to the Bay where they occur.</li> </ul> </li> </ul>	Medium 2 – 3 years	Activity Node Recreation areas	MPS
NE-10	To ensure existing and future buildings are respectful of the landscape character.	<ul style="list-style-type: none"> <li>▪ Ensure that any proposed facilities are appropriate to the coastal setting and do not detrimentally impact on existing visual qualities.</li> </ul>	Medium Ongoing	Activity node Recreation areas	MPS



Ref no.	Objectives	Actions	Priority and timelines	Planning unit	Responsibility to action
NE-11	To create a stronger visual connection between the Bay and Point Nepean Road within the recreation areas, activity nodes and recreation nodes.	<ul style="list-style-type: none"> <li>▪ Investigate opportunity within the Master Plan for the Rosebud Central Activity Node to enhance view lines to the Bay - Refer to Action No. RF -1A.</li> <li>▪ Investigate opportunities to enhance view lines., subject to the three step approach of avoid, minimise and offset the removal of any vegetation.</li> </ul>	Medium 2 years	Activity node Recreation areas	MPS
		<ul style="list-style-type: none"> <li>▪ In conjunction with the proposed Bay Trail improvements, promote the orientation of new trail connections to utilise existing view lines and where practical create new view lines to the Bay. Refer to Action No. AM-4; subject to the three step approach of avoid, minimise and offset the removal of any vegetation.</li> </ul>	Medium 2 years	Recreation Nodes	MPS



## 3.4 recreational facilities and activities

### 3.4.1 existing conditions

The Rosebud Foreshore Reserve is a key public open space for the township of Rosebud and surrounds. It provides a diverse range of recreational and community facilities. These service a growing demand for recreational and tourism activities, increasing the need to protect the foreshore's environmental values.

Both passive and active recreational pursuits occur within the foreshore, some of which are not essentially coastal dependent,, such as playgrounds, picnic areas, camping, etc. However these activities gain value from the coastal location and add to the community's appreciation of the Rosebud Foreshore Reserve.

#### Rosebud Central activity node

The Rosebud Central activity node is the primary recreational space within the Rosebud Foreshore Reserve. Along with the retail activity on the opposite side of Point Nepean Road and Wannaeue Place, the activity node is an important component of the Rosebud Activity Centre. It provides a recreational and community focus, which complements the retail centre. However, Point Nepean Road acts as a barrier between foreshore and retail centre, and there are opportunities to improve pedestrian access.

The *Rosebud Activity Centre Structure Plan (2015)* envisages the Rosebud Central activity node evolving into an important public space for the whole of the activity centre, accessible to the wider public and further contributing to Rosebud's sense of place. A key strategy is to focus community activities within this node.

Located within the activity node area are the following community and recreational amenities:

- Rosebud Sea Scouts;
- Rosebud Yacht Club;
- Rosebud Memorial Hall;
- Sound Shell;
- Youth Hall / Vinnie's Kitchen;
- Rosebud Motor Boat Squadron;
- Rosebud Bowls Club;
- The Village Green;
- Rosebud Carnival Park; and
- J.B. MacDonald Reserve which contains picnic facilities.



The Village Green is the venue for a number of events and festivals, including:

- A monthly community market;
- Australia Day festivities; and
- The Rosebud Carnival, held from mid December to the end of January in Carnival Park.



### **boneo road recreation node**

The Boneo Road recreation node is located at the end of Boneo Road. It comprises Rotary Park and C.R. Coleman Park and has large open lawns and facilities including a playground, barbeques, shelters and a skate park. The area also contains the Rosebud Foreshore Office and car parking.

The recreation node is opposite the Rosebud Plaza shopping complex and linked by only one pedestrian crossing.



### **rosebud pier recreation node**

This Rosebud Pier is located at the end of Jetty Road and provides for passive recreational activities, including walking and sightseeing. Recreational fishing also occurs. While the Rosebud Pier is a key attribute of the reserve, Parks Victoria is responsible for its management and maintenance.

The Structure Plan identifies the lack of activity and connectivity occurring at the Jetty Road precinct (defined as the section of Jetty Road north of Point Nepean Road) and seeks to promote its activation by proposing the creation of a café / restaurant precinct to build upon on the recreation theme of the foreshore and pier. This provides an opportunity to provide new leisure activities within the adjacent foreshore area, which can complement this new development.

### **mccrae lighthouse recreation node**

This node is located opposite Bartels Street. The McCrae Yacht Club is a centrally located and important community facility providing sailing, sail training, sea safety rescue and youth programs. The McCrae Yacht Club, is currently operating at capacity and investigation is required to determine the potential for expansion of the Yacht Club's facilities.

The node also includes the lighthouse, which is of substantial heritage significance. It also includes a playground and a pedestrian crossing to the mainly village commercial area on the opposite side of Point Nepean Road. There is a substantial area for parking on the foreshore, which is in a poor, unsealed condition.

### **camping grounds**

Camping is a key recreational activity within the summer months. Occurring between Chinaman's Creek and the McCrae Lighthouse, the camping grounds are broken into 10 sections with a total of approximately 665 camping sites, comprising 549 powered campsites and 116 non-powered campsites. The camping season operates from 1<sup>st</sup> November to 29<sup>th</sup> April, with peak season from the 9<sup>th</sup> of December to the 3<sup>rd</sup> of February. Occupancy rates typically exceed 80% from December to February and average around 30% across the full season (1<sup>st</sup> November to 30<sup>th</sup> April).





There is an area to the east of the Rosebud Foreshore Office (near Boneo Road) which is allocated for informal camping during the New Year period where bookings are not required. There is also an area to the west of the Rosebud Carnival Park, which is allocated to carnival staff during the carnival, held between mid-December and the end of January. Public camping does not occur here at other times.

In order to service the camping activity, numerous toilet blocks are scattered throughout the grounds, most of which are only open during the camping season. Camping and its patronage apply pressure on the foreshore environment, particularly the sensitive vegetation areas located between the camping sites and beach.

The *Caravan Park Fire Safety Guideline (2006)* prepared by the Country Fire Authority (CFA) has been developed to address issues of prevention and suppression of fires within existing caravan parks for the protection of life and property. Whilst the document is a guideline only, it provides an appropriate method of establishing minimum fire safety requirements and the CFA strongly recommends that all camping areas should strive to adhere to these guidelines.

### **boating facilities**

While there are public boat launching facilities (ramps) located to the east of Anthony's Nose in Dromana and to the west of Chinaman's Creek in Tootgarook, there are no public boat launching facilities within the Rosebud Foreshore Reserve. The Rosebud Motor Squadron has an informal boat ramp, which is used by the Squadron to retrieve and service boats that are moored on swing moorings off the nearby beach.

### **bathing boxes**

There are approximately 161 bathing boxes located throughout the Rosebud Foreshore Reserve along the beach and some contribute to its visual character. However, many of these boxes are located within or at the edge of sensitive coastal vegetation and their ongoing use and access is having detrimental affects on the vegetation. There is a need to balance the recreational use of the boxes with environmental values.





### 3.4.2 management issues

- The need to designate appropriate locations for additional recreational facilities within the foreshore.
- Increasing demand and usage of community and recreational facilities.
- Wider community requests to extend camping season duration.
- Ongoing management of camping grounds.
- Compliance with operational requirements and maintaining public safety within camping grounds.
- Unsupervised dog access impacting on natural values and the recreational experience of other users.
- Impacts of events and festivals on the Rosebud Foreshore Reserve and other recreational facilities and activities.
- Unauthorised use of the existing informal boat launching facilities at the Rosebud Motor Boat Squadron.
- Ongoing maintenance of existing facilities.





### 3.4.3 objectives and actions for recreational facilities and activities

Ref no.	Objectives	Actions	Priority	Planning unit	Responsibility to action
RF-1A	<p>To reinforce the recreational focus of Activity and Recreation Nodes on the Rosebud Foreshore.</p> <p>To provide high standard and appropriate visitor facilities that caters for the increasing user demand and enjoyment by the general public.</p>	<ul style="list-style-type: none"> <li>▪ With the involvement of community and business operators, review the need and location of existing community and recreational facilities within the Rosebud Central Activity Node.</li> </ul>	<p>Medium 2 – 3 years</p>	Activity node	<p>MPS Facility Operators</p>
	<p>No net loss of foreshore land relating to recreational activities, clubs and operations.</p>	<ul style="list-style-type: none"> <li>▪ Undertake a detailed Master Plan for the Rosebud Central Activity Node in consultation with the community and key stakeholders</li> <li>▪ The Master Plan will identify a future vision for the node, reflecting its community focus and role within the Rosebud foreshore and will provide co-ordinated direction for its future development in a staged and costed manner. The Master Plan will reflect the Concept Plan shown in Figure 5 and the following aims:                             <ul style="list-style-type: none"> <li>▪ Provide a net community benefit;</li> <li>▪ Development which will result in no net loss of foreshore land available for recreational activities, clubs and operations;</li> <li>▪ Development does not impose a detrimental impact on adjacent Sensitive Areas;</li> <li>▪ Protect and enhance the existing visual and environmental qualities;</li> <li>▪ Utilise the principles of Environmentally Sustainable Design;</li> <li>▪ Promote night time use;</li> <li>▪ Incorporate a new public open space area (replacing the Bowls Club) containing picnic, playground facilities, public art and a potential ANZAC memorial site which complements the Village Green lawn;</li> <li>▪ Advocate the recommended pedestrian crossings to link the activity node and retail across Point Nepean Road;</li> <li>▪ Incorporate the Bay Trail;</li> </ul> </li> </ul>	<p>Medium 2 years</p>	Activity node	<p>MPS VicRoads</p>



Ref no.	Objectives	Actions	Priority	Planning unit	Responsibility to action
		<ul style="list-style-type: none"> <li>▪ Provide all accessible pedestrian linkages to the Bay Trail and beach;</li> <li>▪ Rationalise and consolidate car access and parking in close proximity to facilities;</li> <li>▪ Provide high quality landscape design;</li> <li>▪ Improve bay viewing opportunities, particularly behind the Sound Shell; subject to the three step approach of avoid, minimise and offset the removal of any vegetation</li> </ul>			
RF-1B		<ul style="list-style-type: none"> <li>▪ Undertake a detailed Master Plan for the Boneo Road Recreation Node. The Master Plan will reflect the Concept Plan shown in Figure 6 and the following aims:                             <ul style="list-style-type: none"> <li>▪ Function as the primary 'play' node within the Rosebud Foreshore Reserve.</li> <li>▪ Suitably accommodate and enhance the playground;</li> <li>▪ Provide additional picnic facilities in accordance with Action No. CI-4;</li> <li>▪ Incorporate suitable landscape treatments in accordance with Action No. NE-9;</li> <li>▪ Provide vehicular access and car parking in accordance with Action No. AM-5 and AM-6; and</li> <li>▪ Improve bay viewing opportunities, subject to the three step approach of avoid, minimise and offset the removal of any vegetation.</li> </ul> </li> </ul>	Medium 2 – 3 years	Recreation nodes	MPS
RF-1C		<ul style="list-style-type: none"> <li>▪ Undertake a detailed Master Plan for the Rosebud Pier Recreation Node. The Master Plan will reflect the Concept Plan shown in Figure 7 and the following aims:                             <ul style="list-style-type: none"> <li>▪ Suitably locate a playground suited for this site;</li> <li>▪ Provide additional picnic facilities in accordance with Action No. CI-4;</li> <li>▪ Incorporate suitable landscape treatments in accordance with Action No. NE-9;</li> <li>▪ Provide vehicular access and car parking in accordance with Action No. AM-5 and AM-6; and</li> <li>▪ Coordinate the design of Master Plan with the design of Jetty Road north of Point Nepean Road and the requirements of Parks Victoria in relation to Rosebud Pier.</li> </ul> </li> </ul>	High 1 year	Recreation nodes	MPS



Ref no.	Objectives	Actions	Priority	Planning unit	Responsibility to action
RF-1D		<ul style="list-style-type: none"> <li>▪ Undertake a detailed design Master Plan for the McCrae Lighthouse Recreation Node. The Master Plan will reflect the following aims:                             <ul style="list-style-type: none"> <li>▪ Provide additional picnic facilities in accordance with Action No. CI-4;</li> <li>▪ Incorporate suitable landscape treatments in accordance with Action No. NE-9;</li> <li>▪ Provide vehicular access and car parking in accordance with Action No. AM-5 and AM-6; and</li> <li>▪ Improves bay viewing opportunities; subject to the three step approach of avoid, minimise and offset the removal of vegetation.</li> </ul> </li> </ul>	Low 3 – 4 years	Recreation nodes	MPS
RF-2	To provide high standard and appropriate visitor facilities that caters for the increasing user demand and enjoyment by the general public.	<ul style="list-style-type: none"> <li>▪ Ensure that any new club and recreational developments:                             <ul style="list-style-type: none"> <li>▪ Deliver a net community benefit;</li> <li>▪ Occur within Activity and Recreational Nodes;</li> <li>▪ Remain within the leased area;</li> <li>▪ Incorporate best practice Environmentally Sustainable Design (ESD); and</li> <li>▪ Maintain full public access to the foreshore and beach.</li> </ul> </li> </ul>	Medium Ongoing	Activity node Recreation areas	MPS
RF-3	To provide high standard and appropriate visitor facilities that caters for the increasing user demand and enjoyment by the general public.	<ul style="list-style-type: none"> <li>▪ Seek funding for the continued upgrading of shower, toilet and laundry blocks. This may include external showers and separate toilet blocks for day users of the foreshore to enable the locking of campers' facilities for camping use only.</li> </ul>	Medium 1 – 2 years	Recreation areas	MPS
RF-4	To provide high standard and appropriate visitor facilities that caters for the increasing user demand and enjoyment by the general public.	<ul style="list-style-type: none"> <li>▪ Investigate the opportunity to use Camping Section 10 for public camping.</li> </ul>	Medium 2 – 3 years	Recreation areas	MPS CFA
RF-5	To provide high standard and appropriate visitor facilities that caters for the increasing user demand and	<ul style="list-style-type: none"> <li>▪ Review the design of a new camping ground layout throughout the foreshore. The design must have respect to;                             <ul style="list-style-type: none"> <li>▪ Sensitive Areas;</li> <li>▪ Bay Trail;</li> </ul> </li> </ul>	Low 3 – 4 years	Recreation areas	MPS



Ref no.	Objectives	Actions	Priority	Planning unit	Responsibility to action
	enjoyment by the general public.	<ul style="list-style-type: none"> <li>▪ Bay Trail connections;</li> <li>▪ Existing canopy vegetation;</li> <li>▪ Existing toilet / shower facility locations;</li> <li>▪ Existing power service lines;</li> <li>▪ Existing parks; and</li> <li>▪ Existing picnic areas.</li> <li>▪ vehicular access and access points;</li> <li>▪ safe distances between camping sites and Point Nepean Road;</li> <li>▪ avoid any net loss of foreshore land; and</li> <li>▪ the recommendations of the Caravan Park Fire Safety Guideline (2006).</li> </ul>			
RF-6	To ensure that all recreational activities are undertaken in a safe and sustainable manner that does not detrimentally impact the natural environment and the wider community's use and enjoyment of the area.	<ul style="list-style-type: none"> <li>▪ Implement dogs on leashes policy.</li> </ul>	High Ongoing	All areas	MPS
RF-7	To regulate events on the foreshore to minimise impacts to public coastal use.	<ul style="list-style-type: none"> <li>▪ Implement Council Event registration and occupancy permits.</li> <li>▪ Investigate the opportunity to relocate the Rosebud Carnival from the foreshore to a more suitable location. Investigation should include other sites within Rosebud and adjacent townships such as Rye.</li> </ul>	Low 2 – 3 years	Activity node	MPS
			Medium 1 – 2 years	Activity node	MPS
		<ul style="list-style-type: none"> <li>▪ Promote car parking for community events to occur off the foreshore through advertising and event approvals.</li> </ul>	Low 3 – 4 years	Activity node	MPS
RF-8	No new recreational boating facilities	<ul style="list-style-type: none"> <li>▪ Apply the Demand and Location Criteria identified within the <i>BCAP</i> to the Rosebud Motor Boat Squadron to identify whether the facility is to be downgraded or decommissioned.</li> <li>▪ Consult with the local community and Rosebud Motor Boat Squadron to determine appropriate steps to achieve the recommendations of the Demand and Location Criteria.</li> </ul>	Low 4 – 5 years	Activity node	MPS Rosebud Motor Squadron



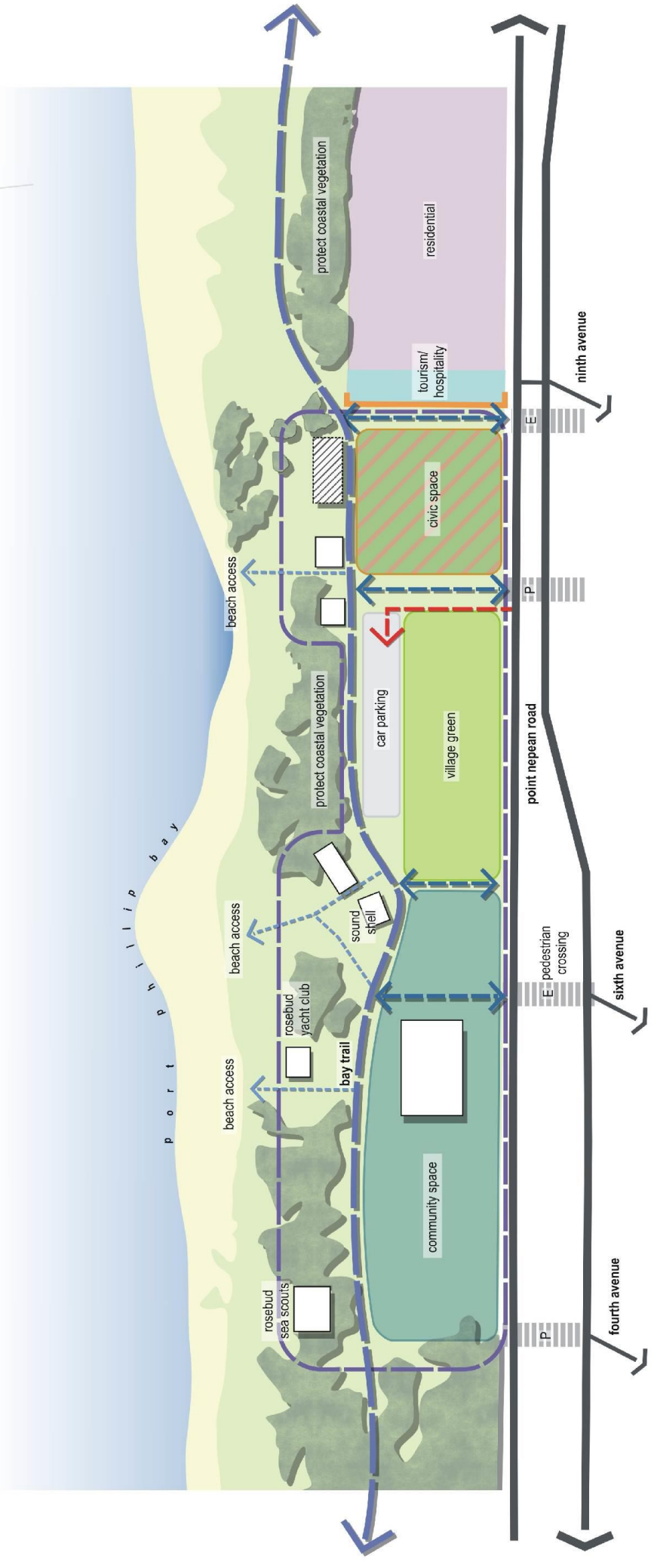
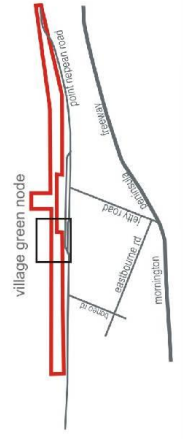
Ref no.	Objectives	Actions	Priority	Planning unit	Responsibility to action
		<ul style="list-style-type: none"> <li>▪ Restrict access to the boat launching area for servicing of vessels only.</li> </ul>	<p>Low 4 – 5 years</p>	<p>Activity node</p>	<p>MPS Rosebud Motor Squadron</p>
RF-9	<p>To provide high standard and appropriate visitor facilities that caters for the increasing user demand and enjoyment by the general public.</p>	<ul style="list-style-type: none"> <li>▪ Maintain toilet blocks, playground, barbecues and other facilities to ensure they are kept to a high standard</li> <li>▪ Seek capital funding from the Crown Land owner – Department of Environment, Land, Water and Planning.</li> </ul>	<p>Medium 2 – 3 years</p>	<p>Activity node Recreation nodes</p>	<p>MPS</p>



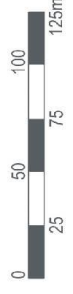
# rosebud coastal management plan

concept plan  
rosebud central  
activity node

- village green
- passive recreation areas
- civic space
- community space
- residential
- car parking cell
- existing buildings
- buildings to be removed
- tourism / hospitality
- active building frontage
- bay trail
- bay trail links
- pedestrian paths
- existing pedestrian crossings
- proposed pedestrian crossings
- vehicular access
- roads
- coastal vegetation
- activity node boundary



Project Ref: 06.374  
Dwg No.: LCD-016  
Scale: 1:2,500@A3  
Date: 21.10.11  
Revision: F



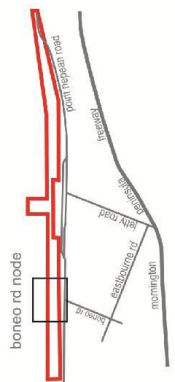
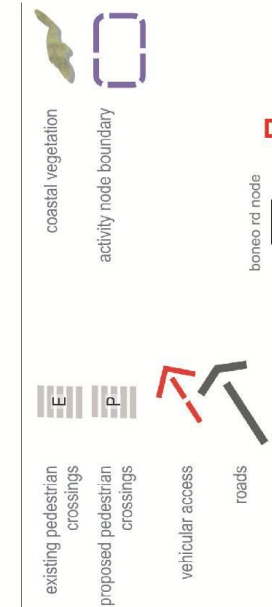
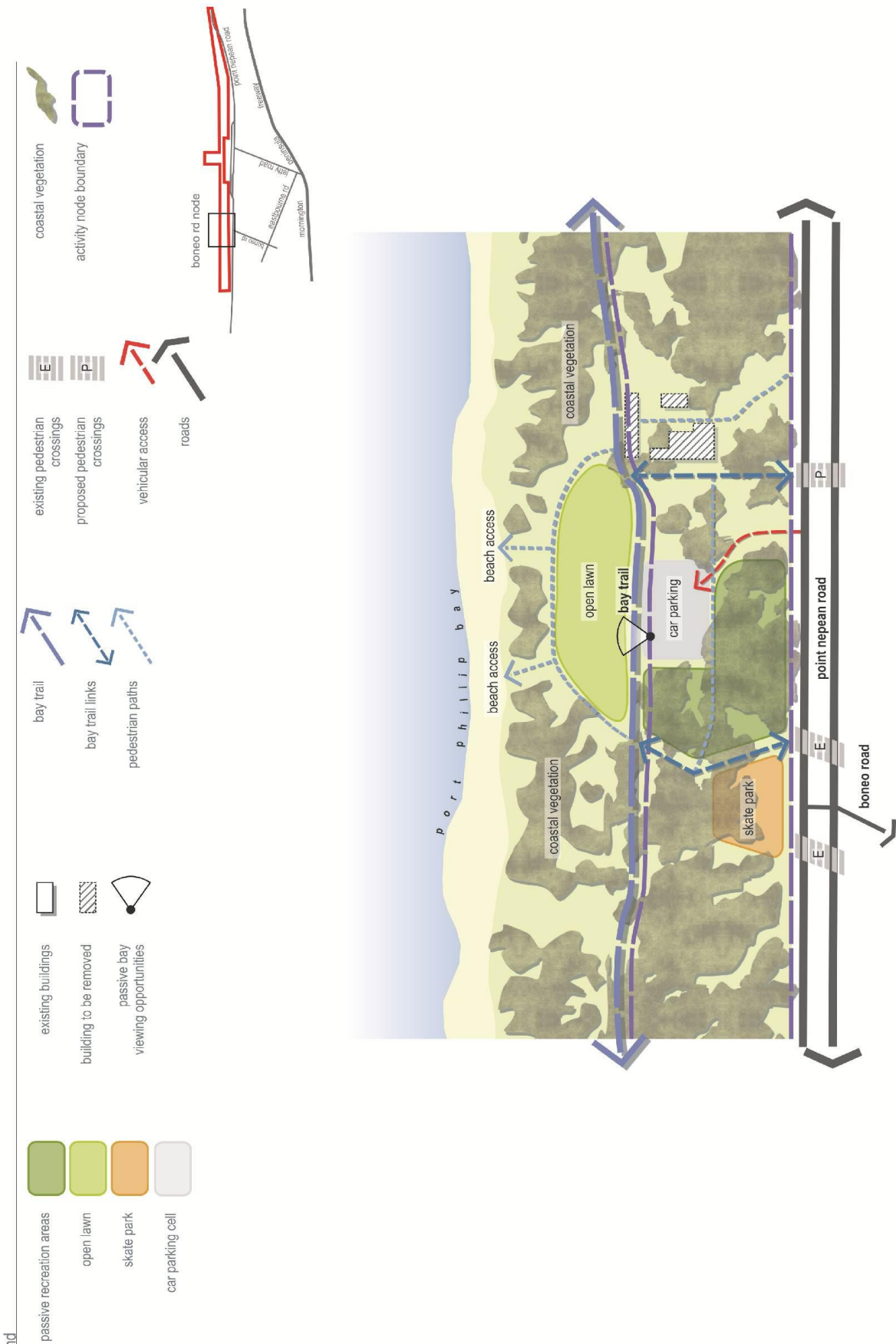
hansen partnership pty ltd  
melbourne | sydney | vietnam  
level 4 /136 exhibition st  
melbourne vic 3000  
t 61 3 9654 8844 f 61 3 9654 8088  
e info@hansen-online.com.au  
w hansen-online.com.au

figure 6

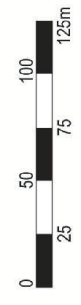


# rosebud coastal management plan

concept plan  
recreation node  
boneo road



Project Ref: 06.374  
Dwg No.: LCD-017  
Scale: 1:2,500@A3  
Date: 21.10.11  
Revision: E



hansen partnership pty ltd  
melbourne | sydney | vietnam  
level 4 136 exhibition st  
melbourne vic 3000  
t 61 3 9654 8844 f 61 3 9654 8088  
e info@hansen-online.com.au  
w hansen-online.com.au

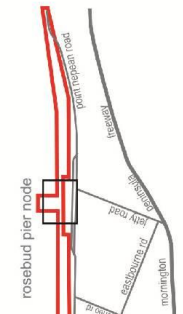
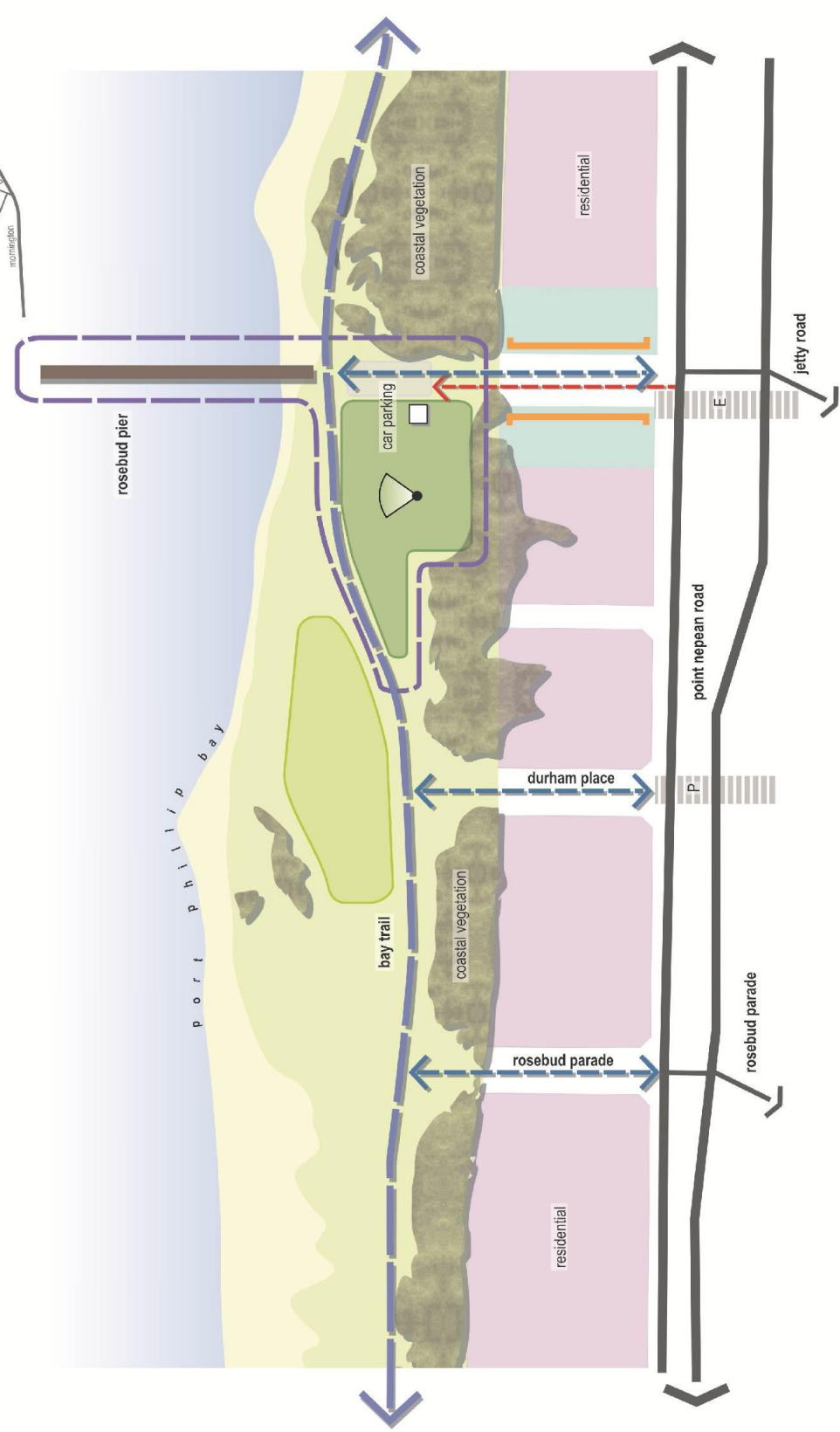
figure 7



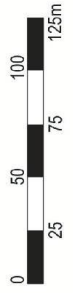
# rosebud coastal management plan

concept plan  
recreation node  
rosebud pier

- |  |                                   |  |                               |
|--|-----------------------------------|--|-------------------------------|
|  | passive recreation areas          |  | coastal vegetation            |
|  | open lawn                         |  | activity node boundary        |
|  | car parking cell                  |  | existing pedestrian crossings |
|  | residential                       |  | proposed pedestrian crossings |
|  | existing buildings                |  | vehicular access              |
|  | buildings to be removed           |  | roads                         |
|  | passive bay viewing opportunities |  | bay trail                     |
|  | tourism / hospitality             |  | bay trail links               |
|  | active building frontage          |  | pedestrian paths              |



Project Ref: 06.374  
Dwg No.: LCD-018  
Scale: 1:2,500@A3  
Date: 21.10.11  
Revision: E



hansen partnership pty ltd  
melbourne | sydney | vietnam  
level 4 136 exhibition st  
melbourne vic 3000  
t 61 3 9654 8844 f 61 3 9654 8088  
e info@hansen-online.com.au  
w hansen-online.com.au

figure 8



## 3.5 access and movement

### 3.5.1 existing conditions

#### pedestrian

- The Rosebud Foreshore Reserve has a continuous pedestrian network of concrete and gravel paths, along with boardwalks and timber bridges used over significant vegetation areas and drainage lines.
- Within camping areas, pedestrian movement is shared with vehicles. Wide paths, controlled speed limits and traffic calming devices such as speed humps are used, however there are still numerous points where pedestrian safety is a concern.
- Pedestrian access to the beach occurs directly through coastal dune vegetation. Access paths are both formal and informal ranging from clearly defined, fenced and signed paths to informal tracks which damage existing vegetation.
- The Bay Trail is the major pedestrian path which extends along the entire 6 kilometre stretch of foreshore. The trail is of regional significance and extends from Anthony's Nose (Dromana) to White Cliffs in Rye.
- Point Nepean Road is a major barrier to pedestrian movement with only four signalised crossing points along the length of the Rosebud Foreshore Reserve. These are located at Boneo Road, Ninth Avenue (opposite the Bowls Club), Jetty Road and Lonsdale Street (McCrae). Due to the limited number of crossing points, jaywalking across Point Nepean Road is a common occurrence.



#### vehicular

- Formal car parking areas are located within the foreshore and adjacent to parks and community facilities, some of which are sealed while others are unsealed.
- The Rosebud Foreshore Reserve contains approximately forty-eight vehicle access points along its frontage to Point Nepean Road, many of which provide access to the numerous camping sections within the foreshore.





### **3.5.2 management issues**

- Informal pedestrian access to the beach, compromising existing coastal dune vegetation.
- Limited provision of access for people with disabilities.
- Poor condition and definition of the Bay Trail, particularly at the western end of the reserve.
- Safe, accessible pedestrian crossing points on Point Nepean Road.
- Oversupply of vehicle access points.
- Increasing demand for car parking close to attractions and beach, particularly during peak summer periods.



### 3.5.3 objectives and actions for access and movement

Ref no.	Objectives	Actions	Priority and timelines	Planning unit	Responsibility to action
AM-1	To rationalise and improve pedestrian access to the beach whilst protecting existing vegetation.	<ul style="list-style-type: none"> <li>▪ Undertake a detailed audit of current pedestrian access points between the foreshore and beach to ensure suitable access is provided, while protecting environmental qualities. The audit is to have respect to the following:                             <ul style="list-style-type: none"> <li>▪ Provide a hierarchy of access paths to the beach, comprising of primary and secondary paths.</li> <li>▪ Primary paths are to cater for larger volumes of use and be designed to allow management and emergency vehicle access.</li> <li>▪ Provide non-slip surfaces on primary paths, ramps and steps in Activity and Recreational Nodes.</li> <li>▪ Identify and develop primary paths which can facilitate beach access for people with disabilities.</li> <li>▪ Locate secondary paths through sensitive areas for minor pedestrian usage only.</li> <li>▪ Rationalise the oversupply of informal pedestrian access points through Sensitive Areas. Investigate the need to formalise any access points and in conjunction with Action No. NE-1 utilise the protective fencing of Coastal Dune Vegetation to close informal access points.</li> </ul> </li> </ul>	Low 2 – 3 years	All areas	MPS
AM-2	To improve equitable access opportunities.	<ul style="list-style-type: none"> <li>▪ As part of the detailed audit of current pedestrian access points, seek the input of the Shire's Disabled Consultative Committee for inclusive access opportunities. Refer to Action No AM-1.</li> </ul>	Low 2 – 3 years	Activity node Recreation node	MPS Local Persons with Disabilities Committee
AM-3	To provide a safe, easily accessible and clearly delineated Bay Trail, which takes advantage of the visual and environmental values of the foreshore.	<ul style="list-style-type: none"> <li>▪ Undertake a detailed design exercise in conjunction with the recommendations of the CAP for cycle paths and walkways, to create a new Bay Trail alignment incorporating the following strategies;                             <ul style="list-style-type: none"> <li>▪ Realign the Bay Trail west of the McCrae Lighthouse;</li> <li>▪ In realigning the Bay Trail maximise its setback from the shoreline and reduce any impact on the sensitive coastal environment.</li> <li>▪ Provide for a staged construction of the trail;</li> <li>▪ Provide a Bay Trail of an appropriate width to facilitate pedestrian and cycle movement only;</li> </ul> </li> </ul>	Low 3 years	All areas	MPS Bicycle Victoria



Ref no.	Objectives	Actions	Priority and timelines	Planning unit	Responsibility to action
		<ul style="list-style-type: none"> <li>▪ Ensure the Bay Trail is segregated from vehicular movement;</li> <li>▪ Utilise the trail as a boundary between Coastal Dune Vegetation Sensitive Areas and Camping Ground Recreational Nodes, while allowing space for the coastal vegetation to re-establish;</li> <li>▪ Provide pedestrian priority crossing at occasions where the Bay Trail crosses vehicular routes;</li> <li>▪ Provide demarcated lanes to separate bicycle and pedestrian traffic and identify pedestrian and bicycle crossing points to access the beach;</li> <li>▪ Provide new surface treatment, such as coloured aggregate to visually define the trail;</li> <li>▪ Ensure that users of the Bay Trail do not conflict with recreational activity occurring within Activity and Recreational Nodes.</li> </ul>			
AM-4	To improve pedestrian connections between the foreshore and commercial centre across Point Nepean Road.	<ul style="list-style-type: none"> <li>▪ Create Bay Trail linkages that provide strong pedestrian entrances to the foreshore and link with the Bay Trail. These should align with existing and proposed crossing points at Point Nepean Road.</li> </ul>	Low 3 years	Activity nodes Recreation nodes	MPS Vic Roads
		<ul style="list-style-type: none"> <li>▪ Ensure a hierarchy with primary and secondary Bay Trail linkages. Primary linkages are to be wide pedestrian thoroughfares which act as a key entrance into the foreshore. These are to occur within:                             <ul style="list-style-type: none"> <li>▪ Rosebud Central Activity Node;</li> <li>▪ Rosebud Pier Recreation Node;</li> <li>▪ Boneo Node Recreation Node; and</li> <li>▪ McCrae Lighthouse Recreation Node.</li> </ul> </li> <li>▪ Locate secondary linkages through Camping Recreational Areas as simple pedestrian entrances to the foreshore.</li> <li>▪ Establish Bay Trail linkages at existing pedestrian crossing points in Point Nepean Road.</li> </ul>	Low 3 years	Recreation nodes	MPS



Ref no.	Objectives	Actions	Priority and timelines	Planning unit	Responsibility to action
		<ul style="list-style-type: none"> <li>▪ Establish Bay Trail linkages following construction of proposed pedestrian crossings as identified by the <i>Rosebud Activity Centre Structure Plan</i>.</li> </ul>	Low 3 years	Recreation nodes	MPS
		<ul style="list-style-type: none"> <li>▪ Investigate the opportunity to provide additional crossing points along the eastern section of Rosebud Foreshore Reserve at:                             <ul style="list-style-type: none"> <li>▪ Bartels Street; and</li> <li>▪ Coburn Avenue.</li> </ul> </li> </ul>	Low 3 years	Recreation nodes	MPS
AM-5	To rationalise and improve vehicular access into the foreshore.	<ul style="list-style-type: none"> <li>▪ In conjunction with the Master Plan, Action No. RF-1A , ensure vehicular access points are provided at a minimum 200m intervals within the Rosebud Central Activity Node.</li> </ul>	Medium 2 – 3 years	Activity node	MPS
		<ul style="list-style-type: none"> <li>▪ In conjunction with the review of the camping grounds design Action No.RF-6, rationalise the current oversupply of vehicular access into the camping grounds.</li> </ul>	Low 3 years	Activity node Recreation node	MPS
		<ul style="list-style-type: none"> <li>▪ Rationalise vehicular access points into the Boneo Road Recreational Node.</li> </ul>	Low 3 years	Recreation node	MPS
		<ul style="list-style-type: none"> <li>▪ Review and assess the number of vehicular access points and routes east of the McCrae Lighthouse.</li> </ul>	Low 3 years	Recreation node	MPS
AM-6	To rationalise and improve vehicular car parking, without jeopardising visual and environmental qualities and health and wellbeing objectives.	<ul style="list-style-type: none"> <li>▪ Prepare a Foreshore Car Parking Plan, which investigates and determines the suitable provision and location of car parking throughout the foreshore, while addressing issues of surface quality, layout, stormwater drainage, public facilities, amenity, shade, pedestrian accessibility and increasing demand. The Plan will:                             <ul style="list-style-type: none"> <li>▪ Audit current car parking provision within the foreshore.</li> <li>▪ Review and assess car parking, ensuring, where practical, no net increase in sealed car park areas;</li> <li>▪ Implement Integrated Foreshore Drop Off Points as recommended by the CAP. These are to occur within the Rosebud Central Activity Node, Boneo Road Recreation Node and Camping Grounds Recreation Areas. The drops off points are to be located adjacent to existing infrastructure including toilets, showers, BBQs and seating.</li> </ul> </li> </ul>	Medium 2 – 3 years	All areas	MPS



Ref no.	Objectives	Actions	Priority and timelines	Planning unit	Responsibility to action
		<ul style="list-style-type: none"> <li>▪ Investigate opportunities to redesign and increase capacity of existing car parking areas and locate in closer proximity to facilities and pedestrian paths.</li> <li>▪ Retain the opportunities at designated car parks for views to the Bay from parked vehicles.</li> <li>▪ Allocate disabled car spaces in close proximity to pedestrian paths and facilities.</li> <li>▪ Incorporate Water Sensitive Urban Design Principles to treat and discharge water runoff.</li> <li>▪ Subject to the need to redesign, remove and relocate poorly sited car parks for environmental, aesthetic and safety reasons, maintain the existing pattern of dispersed small car parks along the foreshore which spread demand throughout its length and are less visually intrusive and retain the gravel surface to provide a more natural feel. This is to occur within public car parks only and not within the camping grounds.</li> <li>▪ Provide recommendations for the Rosebud Central Activity Node Master Plan (Refer Action No. RF-1A), the Boneo Road Recreational Node (Refer Action No. RF-1B), the Rosebud Pier Recreation Node (Refer Action No. RF-1C) and the McCrae Lighthouse Recreation Node (Refer Action No. RF-1D).</li> </ul>			



## 3.6 safety and risk management

### 3.6.1 existing conditions

Safety has been identified as a concern for users of the Rosebud Foreshore Reserve. The enclosed nature of vegetation, darkness at night and limited visual permeability are factors which influence the community's perception of safety. The area behind Rosebud Foreshore Office was identified as a particularly threatening space.

Senescing trees are of concern and pose a risk to both public assets and visitors to the foreshore.

A number of camping sites within Camping Section 4 are in close proximity to Point Nepean Road, which is an amenity and safety concern.



### 3.6.2 management issues

- Managing overall public risk and safety, including the perception or 'sense' of public safety.
- Poor lighting within key pedestrian areas.
- Fire risk management.
- Senescing trees.
- Proximity of Section 4 camping sites to Point Nepean Road.





### 3.6.3 objectives and actions for safety and risk management

Ref no.	Objectives	Actions	Priority and timelines	Planning unit	Responsibility to action
SR-1	To minimise public risk within the foreshore.	<ul style="list-style-type: none"> <li>▪ Undertake an annual audit to identify risk issues within the Foreshore Reserve.</li> </ul>	High 1 – 2 years	Activity node Recreation nodes Sensitive areas	MPS
		<ul style="list-style-type: none"> <li>▪ Implement the recommendations of the audit.</li> </ul>	Medium 2 – 3 years	Activity node Recreation nodes Sensitive areas	MPS
SR-2	To increase public safety within the foreshore.	<ul style="list-style-type: none"> <li>▪ In conjunction with the Master Plan to be prepared for the Rosebud Central Activity Node, Action No. RF-1A, propose appropriate lighting to promote night time accessibility and use. Lighting should aim to illuminate:                             <ul style="list-style-type: none"> <li>▪ Bay Trail;</li> <li>▪ Bay Trail linkages;</li> <li>▪ Car Parking areas;</li> <li>▪ Access to community buildings; and</li> <li>▪ Gathering spaces.</li> </ul> </li> </ul>	Medium 2 – 3 years	Activity node	MPS
		<ul style="list-style-type: none"> <li>▪ In conjunction with the Master Plan to be prepared for the Boneo Road Recreation Node, Action No. RF-1B, propose appropriate lighting to promote night time accessibility and use. Lighting should aim to illuminate:                             <ul style="list-style-type: none"> <li>▪ Area behind Foreshore Office;</li> <li>▪ Bay Trail;</li> <li>▪ Bay Trail linkages;</li> <li>▪ Car parking areas;</li> <li>▪ Playgrounds; and</li> <li>▪ Picnic areas.</li> </ul> </li> </ul>	Medium 2 – 3 years	Recreation nodes	MPS
		<ul style="list-style-type: none"> <li>▪ In conjunction with the Master Plan to be prepared for the Rosebud Pier Recreation Node, Action No. RF-1C and subject to an investigation of environmental and aesthetic impacts, propose appropriate lighting to promote night time accessibility and use. Lighting should aim to illuminate:</li> </ul>	High 1 year	Recreation nodes	MPS



Ref no.	Objectives	Actions	Priority and timelines	Planning unit	Responsibility to action
		<ul style="list-style-type: none"> <li>▪ Bay Trail, between Pier and Village Green Activity Node;</li> <li>▪ Pedestrian access at end of Jetty Road</li> <li>▪ Car parking areas.; and</li> <li>▪ Picnic areas</li> </ul>			
SR-3	To minimise the risk of fire.	<ul style="list-style-type: none"> <li>▪ Implement the recommendations of the Municipal Fire Prevention Plan (2007), including caravan park inspections, development and implementation of Emergency Management Plans, annual fire hazard inspections, information campaigns, preparation of fire emergency plans for any festivals taking place and Fire Management Plans for Bushland Reserves.</li> </ul>	High 1 year	All areas	MPS
SR-4	To minimise public risk within the foreshore.	<ul style="list-style-type: none"> <li>▪ Engage an arborist to conduct an audit of existing trees within Activity and Recreation Nodes.</li> </ul>	High 1 year	Activity nodes Recreation nodes	MPS
		<ul style="list-style-type: none"> <li>▪ Undergo staged removal of senescing trees, subject to the three step approach of avoid, minimise and offset the removal of vegetation.</li> </ul>	High Ongoing	Activity nodes Recreation nodes	MPS
		<ul style="list-style-type: none"> <li>▪ In conjunction with the review of camping grounds Action No. RF-6, develop a planting plan to establish replacement trees and canopy coverage for the camping areas.</li> </ul>	Low 3 years	Recreation nodes	MPS



## 3.7 signage and public awareness

### 3.7.1 existing conditions

The Rosebud Foreshore Reserve contains numerous values which can be communicated to the community to increase their appreciation and understanding of the foreshore, including ecological and heritage values. Signage is the primary medium by which these values and other information are presented to the community. Signage within the Rosebud Foreshore Reserve includes:

- Interpretive signage – located at key locations of the foreshore and highlighting historical, environmental or recreational information.
- Information signage – a variety of signage types identifying features along the foreshore, speed limits, the Bay Trail, revegetation areas, dog leash areas etc.

There is a general inconsistency with the extent, type and quality of signage within the foreshore reserve.

### 3.7.2 management issues

- Inconsistencies in extent and type of signage.
- Poor way finding signage.
- Lack of public awareness of cultural values.
- Lack of public awareness of ecological values.
- Need to educate and support the important work of Friends Groups.





### 3.7.3 strategies for signage and public awareness

Ref no.	Objective	Action	Priority and timelines	Planning unit	Responsibility to action
PA-1	To minimise the extent of signage where possible. To provide consistent signage along the foreshore. To provide adequate signage for educational and safety information.	<ul style="list-style-type: none"> <li>▪ Develop a standard template for all new signage to be installed within the foreshore.</li> <li>▪ Audit existing signage and remove or replace signage which is deemed unnecessary, conflicts with visual qualities, and is in disrepair.</li> </ul>	Low 3 years	Sensitive areas	MPS
PA-2	To ensure clear way finding signage at key foreshore entries.	<ul style="list-style-type: none"> <li>▪ Provide way finding signage at key pedestrian entries to the foreshore along primary Bay Trail breaks, Action No. AM-4.</li> </ul>	Low 3 years	Recreation areas	MPS
PA-3	To increase community understanding and appreciation of coastal ecological and cultural heritage values.	<ul style="list-style-type: none"> <li>▪ Continue providing interpretive signage at key educational points.</li> </ul>	Low 3 years	Sensitive areas	MPS
	To provide adequate signage for educational and safety information.	<ul style="list-style-type: none"> <li>▪ Create an educational pamphlet educating the community on the ecological values and protection measures currently taking place within the Rosebud Foreshore Reserve. This pamphlet would be distributed to seasonal campers when they arrive.</li> </ul>	Medium 2 – 3 years	Sensitive areas	MPS
		<ul style="list-style-type: none"> <li>▪ Erect signage along residential interface to Rosebud Pier Recreation Node to advise the community of the ecological values and consequences of illegal vegetation removal.</li> </ul>	Medium 2 – 3 years	Sensitive areas	MPS
		<ul style="list-style-type: none"> <li>▪ Erect signage within the Rosebud Pier Recreation Node educating the community that the area is used for nesting by Red-capped plover.</li> </ul>	Medium 2 – 3 years	Sensitive areas	MPS



Ref no.	Objective	Action	Priority and timelines	Planning unit	Responsibility to action
PA-4	<p>To increase community understanding and appreciation of coastal ecological and cultural heritage values.</p> <p>To provide adequate signage for educational and safety information.</p>	<ul style="list-style-type: none"> <li>▪ Provide interpretive signage at key cultural heritage educational points.</li> </ul>	<p>Low 3 years</p>	<p>Sensitive areas</p>	<p>MPS Friends Groups</p>
PA-5	<p>To increase community understanding and appreciation of coastal ecological values.</p>	<ul style="list-style-type: none"> <li>▪ Ensure continuing support of the Friends Groups within the foreshore by providing training at working bees, facilitated by Service Providers.</li> <li>▪ Organise and promote community planting days in conjunction with the various Friends Groups within the foreshore</li> </ul>	<p>High Ongoing</p>	<p>Sensitive areas</p>	<p>MPS Friends Groups</p>



## 3.8 coastal infrastructure and facilities

### 3.8.1 existing conditions

There are a wide range of public and private facilities and infrastructure located on the foreshore.

The Rosebud Pier is no longer utilised for boat access, however remains a recreational asset providing scenic walks and a location for recreational fishing.

The McCrae Lighthouse is no longer required for its navigational purposes. It remains an asset of the DELWP and is currently managed by Council.

Existing furniture within the foreshore is variable in condition, and is in need of refurbishment to achieve consistency.



A number of timber groynes are located along McCrae Beach to reduce coastal erosion. The seawall Rosebud West serves its function, however is not critical today for coastal protection

There are a number of stormwater outlets along the beach that discharge into the bay. These unsightly outlets erode at the end point of the beach and pollute the beach and water during periods of rain.

The Rosebud Motor Squadron has an informal boat ramp which is used by the Squadron to retrieve and service moored boats.

Private bathing boxes at McCrae are affected by sand accumulation.

There are multiple club rooms and facilities which are variable in presentation.



### 3.8.2 management issues

- Quality of stormwater discharge.
- Poor condition and inconsistent park furniture.
- Damaged fencing protecting areas of coastal vegetation.
- Future arrangements for the management of the heritage values of the McCrae Lighthouse.
- Continued coastal erosion, and lack of scientific knowledge and funding opportunities.
- Management responsibilities in regard to sand accumulation around bathing boxes.
- Consistent requirements for maintenance of private facilities.





### 3.8.3 strategies for coastal infrastructure

Ref no.	Objective	Action	Priority and timelines	Planning unit	Responsibility to action
CI-1	To monitor the rate of erosion and develop appropriate coastal protection strategies.	<ul style="list-style-type: none"> <li>▪ Seek funding for preparation of a Coastal Assessment Process Study for:                             <ul style="list-style-type: none"> <li>▪ Beach and foreshore area west of the Rosebud Pier;</li> <li>▪ Anthony's Nose; and</li> <li>▪ McCrae Beach, including the effectiveness and future of groynes.</li> </ul> </li> <li>▪ Investigate interim options for erosion management.</li> </ul>	Medium 1 – 2 years	Sensitive areas	MPS
CI-2	To guide appropriate use, management and alterations to bathing boxes and boat sheds.	<ul style="list-style-type: none"> <li>▪ Private Bathing Box owners are to be responsible to manage sand accumulation around the boxes.</li> <li>▪ Only if accumulated sand has a negative impact on the functionality of bathing boxes should any removal of sand be considered.</li> <li>▪ If sand removal is undertaken, only hand tolls must be used and no damage must occur to Coastal Dune Vegetation Sensitive Areas. MPS are to monitor any rectification works.</li> </ul>	Medium 2 years	Sensitive areas	Private Owners MPS
CI-3	To improve the visual and environmental impact of storm water outlets.	<ul style="list-style-type: none"> <li>▪ Investigate Water Sensitive Urban Design options, which may be able to replace existing stormwater outlet pipes.</li> <li>▪ Investigate opportunity to install debris guards on pipe outlets to capture litter prior to discharge into the Bay.</li> </ul>	Low 3 years	Sensitive areas	MPS Melbourne Water
CI-4	To install a consistent suite of street and parkland furniture.	<ul style="list-style-type: none"> <li>▪ Review existing picnic facilities and seating to ensure they satisfy community needs.</li> <li>▪ Identify any facilities which require immediate repair or replacement.</li> </ul>	Medium 2 years	Activity node Recreation nodes	MPS
		<ul style="list-style-type: none"> <li>▪ Install new or replace picnic facilities and seating at the following locations:                             <ul style="list-style-type: none"> <li>▪ Rosebud Central Activity Node, as part of the Master Plan, Action No. RF-1;</li> </ul> </li> </ul>	Low 3 years	Activity node	MPS
		<ul style="list-style-type: none"> <li>▪ Boneo Road Recreation Node, as part of the Master Plan, Action No. RF-1;</li> </ul>	Low 3 years	Recreation nodes	MPS
		<ul style="list-style-type: none"> <li>▪ Rosebud Pier Recreation Node, in conjunction with proposed playground and associated landscape works, Action No. RF-1.</li> </ul>	Medium 2 years	Recreation nodes	MPS



Ref no.	Objective	Action	Priority and timelines	Planning unit	Responsibility to action
		<ul style="list-style-type: none"> <li>▪ Install new or replace existing picnic facilities within the following areas:                             <ul style="list-style-type: none"> <li>▪ McCrae Lighthouse Recreation Node</li> <li>▪ Tom Salt Memorial Park;</li> </ul> </li> </ul>	Low 3 years	Recreation nodes	MPS
		<ul style="list-style-type: none"> <li>▪ Identify a suite of street furniture appropriate with Council's management requirements. Furniture to be installed within Rosebud Central Activity Node, Boneo Road Recreation Node and Rosebud Pier Recreation Node may be more in its design and materials. Furniture for Camping Grounds and the McCrae Lighthouse Recreation Node is to complement the coastal setting with natural materials such as timber. The suite will provide a consistent look and assist in creating an image for the foreshore reserve.</li> </ul>	Low 3 years	Activity node Recreation nodes	MPS
CI-5	To ensure the long term maintenance for the McCrae Lighthouse.	<ul style="list-style-type: none"> <li>▪ Prepare a Conservation Management Plan for the McCrae Lighthouse.</li> </ul>	High 1 year	Recreation nodes	MPS
CI-6	To repair damaged protective fencing.	<ul style="list-style-type: none"> <li>▪ In conjunction with additional protective fencing for Coastal Dune Vegetation Sensitive Areas, Action No. NE-1, repair existing fencing that represents a public hazard.</li> </ul>	Medium 2 – 3 years	Sensitive areas	MPS



## 3.9 climate change

### 3.9.1 existing conditions

Climate change and sea level rise is an important consideration with the potential to have a significant long term impact on both the natural values of the Rosebud foreshore and the ability to utilise the foreshore as a major recreational resource.

The *Victorian Coastal Vulnerability Study (1992)* undertaken by the Coastal Investigations Unit of the Port of Melbourne Authority found that numerous areas along the coastline from Safety Beach to Point Nepean are potentially vulnerable to greenhouse changes, including the beaches surrounding the Rosebud Life Saving Club, the car park at McCrae, and Anthony's Nose. The report found that any increase in wave activity in these areas may have severe impacts.

The *Future Coasts* project managed by the State Government Department of Environment, Land, Water and Planning (DELWP) aims to assess the vulnerability of Victoria's coastline to climate change and develop strategies to help communities and industry respond and adapt. It will assist the Victorian Government obtain an accurate understanding of the risks climate change presents to Victoria's coastline and identify ways to reduce these risks. The results of the Future Coasts project for the Rosebud Foreshore are yet to be made available.

The *Rosebud Foreshore Climate Change Assessment (2009)* examines the potential impacts of climate change on the Community Space (Hall/Carnival site) within the Rosebud Central Activity Node. The analysis in this report shows that the site has a low vulnerability up to 2050, but this increases to moderate by 2070. A major feature contributing to the assessment of low vulnerability is the high capacity for adaptation should adverse impacts of climate change be identified.

The *Victorian Coastal Strategy 2014* discusses the challenges coastal areas face in adapting to climate change risks and impacts including sea level rises, storm surges and rising sea temperatures. The strategy outlines a comprehensive policy for the planning and development of coastal areas.

These documents provide guidance in tackling climate change issues. However, the Rosebud Foreshore Reserve must still cater for the current recreational needs of visitors. Climate change should not be viewed as a prohibition on the development of community infrastructure and coastal facilities, however it is important to give balanced consideration to the risks and adaptation options available, particularly where major investment is proposed.

### 3.9.2 management issues

- Uncertainty of the impact of climate change on coastal assets.



### 3.9.3 strategies for climate change

Ref no.	Objective	Action	Priority	Planning unit	Responsibility to action
CC-1	To understand the effects of climate change on the coast.	<ul style="list-style-type: none"> <li>▪ Seek funding to monitor impacts of climate change on the foreshore, such as changes to the rate of erosion or accretion.</li> <li>▪ Take an active part in the Coastal Adaptation Decision Pathways project undertaken by the Association of Bayside Municipalities.</li> </ul>	<p>Medium 2 – 3 years</p> <p>High 1 year</p>	<p>All areas</p> <p>All areas</p>	<p>MPS</p> <p>ABM</p> <p>MPS</p>
	To develop a coordinated adaptation approach to climate change.	<ul style="list-style-type: none"> <li>▪ Ensure all major infrastructure and facility projects undertake a climate change assessment.</li> </ul>	<p>High Ongoing</p>	<p>Activity node</p> <p>Recreation nodes</p>	<p>MPS</p>
		<ul style="list-style-type: none"> <li>▪ Implement sustainable practices for future developments where practical including:                             <ul style="list-style-type: none"> <li>▪ Installation of rainwater tanks on foreshore buildings.</li> <li>▪ Install half flushing toilets within the foreshore's public toilet blocks.</li> <li>▪ Investigate opportunity to install automatic shut off, sensor or timed function taps.</li> <li>▪ Consider replacement of existing lighting with solar powered lights.</li> </ul> </li> </ul>	<p>Low 3 years</p>	<p>Activity node</p> <p>Recreation nodes</p>	<p>MPS</p>



## 3.10 social and cultural heritage

### 3.10.1 existing conditions

#### aboriginal heritage

The report titled *An archaeological survey of the Rosebud Foreshore Victoria (2000)* by Biosis Research identified and recorded five Aboriginal archaeological sites within the Rosebud Foreshore Reserve. These sites are all shell middens and have varying significance due to degradation caused by post-contact use of the foreshore.

It is highly likely that Aboriginal archaeological material is present elsewhere within the foreshore, particularly on the dunes, ridgelines, high land and close to fresh water.

#### european heritage

There are six European historical archaeological sites, which have been identified and recorded within the Rosebud Foreshore Reserve (Biosis, 2000). These are:

- Anthony's Nose Sea Wall.
- McCrae Sea Wall.
- Homestead Boat Hire, formerly Farquar's.
- Magnum Boat Hire, formerly Coleman's Boat Hire.
- Second Pier.
- West Rosebud Sea Wall.

These sites are not considered significant enough for statutory protection (Biosis, 2000).

One registered heritage site and one historic shipwreck were also noted.

- McCrae Lighthouse, protected under the Heritage Act through the Victorian Heritage Register and also protected under a Heritage Overlay in the Mornington Peninsula Planning Scheme.
- Wreck of Rosebud (Biosis, 2000).



There are also six potential historic archaeological sites, which are predominantly the locations of early fishermen's cottages and the lighthouse cottages, which have all been removed.

There are two cultural heritage places of local significance:

- The Village Green as it *“represents important social interactions of the Rosebud inhabitants. The Village Green represents a century of sporting, recreational and cultural events in Rosebud. It is a focal point to social interactions”* (Biosis, 2000).



- The Rosebud Foreshore Reserve Camping Ground as *“the camping ground of the foreshore represents almost a century of annual journeys for Victorians to Rosebud for recreation. The annual event is traditional in many families, who come to the same spot and camp under the same trees every year”* (Biosis, 2000).

The entire Rosebud Foreshore Reserve has also been identified as a cultural landscape of local heritage significance. “The foreshore encapsulates and provides an identity for the Rosebud / McCrae locality, which the local community has placed a cultural value on. It has provided the local community with a sense of place and belonging” (Biosis, 2000).

The report Stage 2 Heritage Report Bathing Boxes and Boat Sheds (2004) by Graeme Butler and Associates identified Bathing boxes 55, 74, 97 and 141-151 as being historically significant.

The Sound Shell has been recently classified by the National Trust as a structure, which has heritage value, due to its unique design and construction techniques. It has been nominated for inclusion on the State heritage register but the assessment and determination process by Heritage Victoria is still to be concluded.

### **3.10.2 management issues**

- Protection of Aboriginal heritage sites.
- Protection of European heritage sites.
- Lack of awareness and recognition of currently unidentified sites and other cultural heritage values.
- Maintaining visual grouping and contributory elements of significant bathing boxes.
- Heritage value of the Sound Shell.



### 3.10.3 strategies for social and cultural heritage

Ref no.	Objective	Action	Priority	Planning unit	Responsibility to action
CH-1	To increase awareness, understanding and protection of cultural heritage values of the foreshore and to ensure compliance with the requirements of the Aboriginal Heritage Act 2006	<ul style="list-style-type: none"> <li>Resurvey the foreshore reserve to determine the status of previously recorded shell midden sites and examine the area for previously unexposed sites. This survey is to be conducted outside of the holiday camping period.</li> </ul>	Medium 2 – 3 years	All areas	MPS
		<ul style="list-style-type: none"> <li>A Cultural Heritage Management Plan must be prepared and approved where required.</li> <li>Prior to any proposed development, background research and a field survey are to be undertaken of the development area, to determine the presence or absence of Aboriginal cultural material.</li> </ul>	High Ongoing	Activity node Recreation nodes	MPS
		<ul style="list-style-type: none"> <li>If any earthworks are to be undertaken. These earthworks are to be monitored by an Aboriginal Community Representative to ensure that if any Aboriginal cultural material is revealed appropriate identification can occur.</li> <li>If any earthworks are planned within 100 metres of a recorded site, then the 'developer' is required to request permission from the Minister for Aboriginal Affairs to disturb the site.</li> </ul>	High Ongoing	Activity node Recreation nodes Sensitive areas	MPS
		<ul style="list-style-type: none"> <li>In accordance with Action No. NE-1, undergo revegetation works within recorded sites.</li> </ul>	High Ongoing	Sensitive areas	MPS
		<ul style="list-style-type: none"> <li>While undertaking the pedestrian access audit Action No. AM-1, ensure informal pedestrian paths through or in close proximity to recorded sites are closed.</li> </ul>	High Ongoing	Sensitive areas	MPS
		<ul style="list-style-type: none"> <li>Undertake revegetation and protection works in consultation with an Aboriginal Community Representative.</li> </ul>	Medium Ongoing	Sensitive areas	MPS
		<ul style="list-style-type: none"> <li>Ensure recorded sites are protected with fencing, in conjunction with Action No. AM-1.</li> </ul>	High Ongoing	Sensitive areas	MPS
		<ul style="list-style-type: none"> <li>Liaise with local Aboriginal Community Representatives to increase indigenous participation in the management of the foreshore.</li> </ul>	High Ongoing	Sensitive areas	MPS



Ref no.	Objective	Action	Priority	Planning unit	Responsibility to action
		<ul style="list-style-type: none"> <li>Educate maintenance workers and friends groups, which undertake maintenance and revegetation works around recorded sites to protect them from unintentional damage.</li> </ul>	High Ongoing	Sensitive areas	MPS
CH-2	To increase awareness, understanding and protection of cultural heritage values of the foreshore.	<ul style="list-style-type: none"> <li>Continue advocacy for ongoing maintenance of the European heritage sites.</li> <li>Continue advocacy for ongoing maintenance of:                             <ul style="list-style-type: none"> <li>Anthony's Nose Sea Wall;</li> <li>McCrae Sea Wall;</li> <li>Homestead Boat Hire; and</li> <li>Rosebud West Sea Wall.</li> </ul> </li> </ul>	Low Ongoing	Recreation nodes	MPS
		<ul style="list-style-type: none"> <li>Ensure upkeep of interior and exterior of the McCrae Lighthouse. Any planned work in this area surrounding the McCrae Lighthouse should be undertaken following consultation with Heritage Victoria.</li> <li>Prepare a Conservation Management Plan for the McCrae Lighthouse.</li> </ul>	Low 3 years	Recreation nodes	MPS
		<ul style="list-style-type: none"> <li>Retain and continue ongoing maintenance of Second Pier. Any excavation works within this area should be monitored for sub surface structural remains of the pier.</li> </ul>	High 1 year	Recreation nodes	MPS
		<ul style="list-style-type: none"> <li>Retain and continue ongoing maintenance of Second Pier. Any excavation works within this area should be monitored for sub surface structural remains of the pier.</li> </ul>	Medium Ongoing	Recreation nodes	MPS
CH-3	To increase awareness, understanding and protection of cultural heritage values of the foreshore.	<ul style="list-style-type: none"> <li>Require all new major works and development to undertake an assessment of likely aboriginal sensitivity/impacts.</li> </ul>	High Ongoing	Activity node Recreation nodes	MPS Local Aboriginal Committee
CH-4	To increase awareness, understanding and protection of cultural heritage values of the foreshore.	<ul style="list-style-type: none"> <li>Implement the management requirements of bathing boxes in accordance with the <i>Mornington Peninsula Shire Bathing Box &amp; Boatshed Policy</i>.</li> <li>Acknowledge that Bathing Boxes 55, 74, 97 and 141-151 have identified heritage significance.</li> </ul>	Low 3 years	Sensitive areas	MPS Heritage Victoria Private owners
CH-5	To increase awareness, understanding and protection of cultural heritage values of the foreshore.	<ul style="list-style-type: none"> <li>As part of the Master Plan for the Rosebud Central Activity Node Action No. RF-1, investigate the potential heritage and community value of the Sound Shell prior to making a decision whether to retain, remove or relocate it.</li> </ul>	Medium 2 years	Activity node	MPS Heritage Victoria



## 4 business plan

### 4.1 introduction

The income generated for all ten foreshore areas managed by the Mornington Peninsula Shire Council (MPS) forms part of the consolidated revenue it collects from a range of sources.

Foreshore maintenance works are undertaken for all foreshores by contractors under a Shire-wide maintenance contract, funded from consolidated revenue.

Similarly, relevant staff salaries, the preparation of coastal management plans and master plans, minor improvements (e.g. seating) and minor capital works associated with the responsibilities of Council as the Committee of Management are funded through the budget process. The development of more major coastal infrastructure and facilities is generally the responsibility of the State government as the ultimate 'landlord'.

As a result the income and expenditure figures of this Business Plan are approximate figures only.

Where possible additional funding and expenditure for projects is arranged based on grants from State and Federal Government departments and authorities. These are not known in advance and cannot be reflected in detail in this Business Plan.

As part of its commitment to improving the overall coastal experience on the peninsula, the MPSC provides an annual budget for the implementation of actions specified in coastal management plans.

In addition, allocations from other MPS programs may be made available as appropriate; including the Foreshores Facilities Rehabilitation Program and the Coastal Reserves Biodiversity Conservation Program.

Furthermore, funding of projects may be arranged based on the implementation of specific strategies; e.g. the Playground Strategy.

For major projects, funding is arranged through the process of the MPSC Capital Works Program.

More specific to the Rosebud Foreshore Reserve:

- income is generated from bathing boxes, businesses operating on the foreshore, camping fees and events held on the foreshore;
- maintenance, camping administration and capital works are the primary targets of expenditure.



## **4.2 Income**

### **4.2.1 revenue**

#### **camping**

The Rosebud Camping and Caravan Park comprises ten camping sections with a total of approximately 650 camping sites. The MPS manages camping within the foreshore, which occurs between November and April. The MPS collects fees from camping users.

#### **bathing boxes**

The MPS collects annual license fees for the ongoing use of 161 bathing boxes within the Rosebud Foreshore Reserve. MPS also collects a fee when occupancy rights are transferred.

#### **community facilities**

The Rosebud Foreshore Reserve contains numerous community facilities including the Rosebud Memorial Hall, Sound Shell and Youth Hall. A variety of leases and fees apply.

#### **recreational and sporting clubs**

A number of sporting clubs are located throughout the Rosebud Foreshore Reserve, including the Rosebud Bowls Club, Rosebud Yacht Club, McCrae Yacht Club, Rosebud Motor Boat Squadron, Rosebud Sea Scouts, and Rosebud Life Saving Club along with some boat and catamaran hire operators. A variety of leases and fees apply.

#### **events**

The Rosebud Foreshore Reserve hosts a number of community events and festivals throughout the year, including a monthly community market, Australia Day festivities, the 'Colour the Sky' Kite Festival and the Rosebud Carnival. Fees apply to some events.

### **4.2.2 external funding**

Additional funding opportunities to support capital works within the Rosebud Foreshore Reserve will be sought as appropriate from a range of State and Federal Government Departments and authorities.

## **4.3 expenditure**

### **general foreshore maintenance**

The day to day maintenance of the Rosebud Foreshore Reserve, including beach cleaning and camping area amenities.

### **camping administration**

The Shire employs a team of people that manages the camping areas. This team includes on-site customer service staff.



### **vegetation bushland works**

The MPS maintains and improves the coastal dune vegetation throughout the Rosebud Foreshore Reserve. Maintenance and improvement works include plant propagation, planting and weed removal. An annual amount in the order of \$70,000 is spent on these activities.

The MPS receives substantial assistance from Friend's Groups in relation to this activity.

### **foreshore improvements**

As part of improving the overall coastal experience on the peninsula, an amount in the order of \$50,000 per year may be made available for the implementation of this coastal management plan.

### **capital works**

The capital works projects envisaged in this Coastal Management Plan include:

- Rosebud Central Activity Node – implementation of improvements in accordance with the Master Plan, including the Rosebud Civic Space (dependent on the satisfactory relocation of the Rosebud Bowls Club).
- Recreation Nodes – implementation of improvements in accordance with the Master Plans.
- Upgrade of camping infrastructure, in particular amenity blocks

The costs of these projects are still to be determined. The funding of these projects will be subject to the normal process of the MPS consideration of its Capital Works Program.

## **4.4 reporting requirements and accountability**

In accordance with the *Local Government Act (1989)*, the Mornington Peninsula Shire prepares and adopts an annual budget by the 31<sup>st</sup> of August each year. The budget includes standard statements for financial performance, financial position, cash flows and capital works. This business plan needs to be considered in the context of the MPS annual budget arrangements.

## **4.5 administration**

The Mornington Peninsula Shire as the Committee of Management is responsible for the ongoing maintenance, improvement and management of the Rosebud Foreshore Reserve.

The Shire has established the Rosebud Foreshore Advisory Group. This Group of community representatives enables the Shire to seek local community views on coastal management issues. For specific projects separate community consultation processes are undertaken.





rosebud coastal management plan - appendix 1  
prepared by hansen partnership for mornington peninsula shire  
amended may 2015

aila victoria medal 2008  
australian institute of  
landscape architects  
(victorian state group)

consultant planner of the year 2006  
consultant planner of the year 2005  
planning institute of australia  
(victoria division)



hansen partnership pty ltd  
**melbourne** | vietnam

level 4 136 exhibition st  
melbourne vic 3000  
t 03 9654 8844 f 03 9654 8088  
e [info@hansen-online.com.au](mailto:info@hansen-online.com.au)  
w [hansen-online.com.au](http://hansen-online.com.au)  
ABN 20 079 864 716 | ACN 079 864 716



## **table of contents**

<b>appendix 1 – existing conditions</b>	<b>3</b>
1.1 introduction	3

## **table of figures**

- figure 1 – rosebud foreshore analysis
- figure 2 – rosebud foreshore analysis
- figure 3 – rosebud foreshore analysis



## **appendix 1 - existing conditions & analysis**

### **1.1 introduction**

This section provides a brief overview of the existing conditions within the Rosebud Foreshore Reserve.

An existing conditions analysis of the Rosebud Foreshore Reserve is provided on Figures 1-3.



# rosebud coastal management plan

foreshore analysis sheet 1

**legend**

	foreshore reserve boundary		main roads		formal pedestrian beach access		buildings		harbour
	contours at 1m intervals		local roads		informal pedestrian beach access		toilet blocks		destination places
	high water mark		sealed car park		pedestrian crossings		bathing boxes		coastal vegetation
	beach		unsealed car park		shared pedestrian and vehicular movement		boys		visual screens
	privately owned land		pedestrian paths		vehicular entries		shelters		limber groynes
	camping sites		bay trail		fencing		playgrounds		
			drainage lines						
			bridges						
			timber boardwalks						

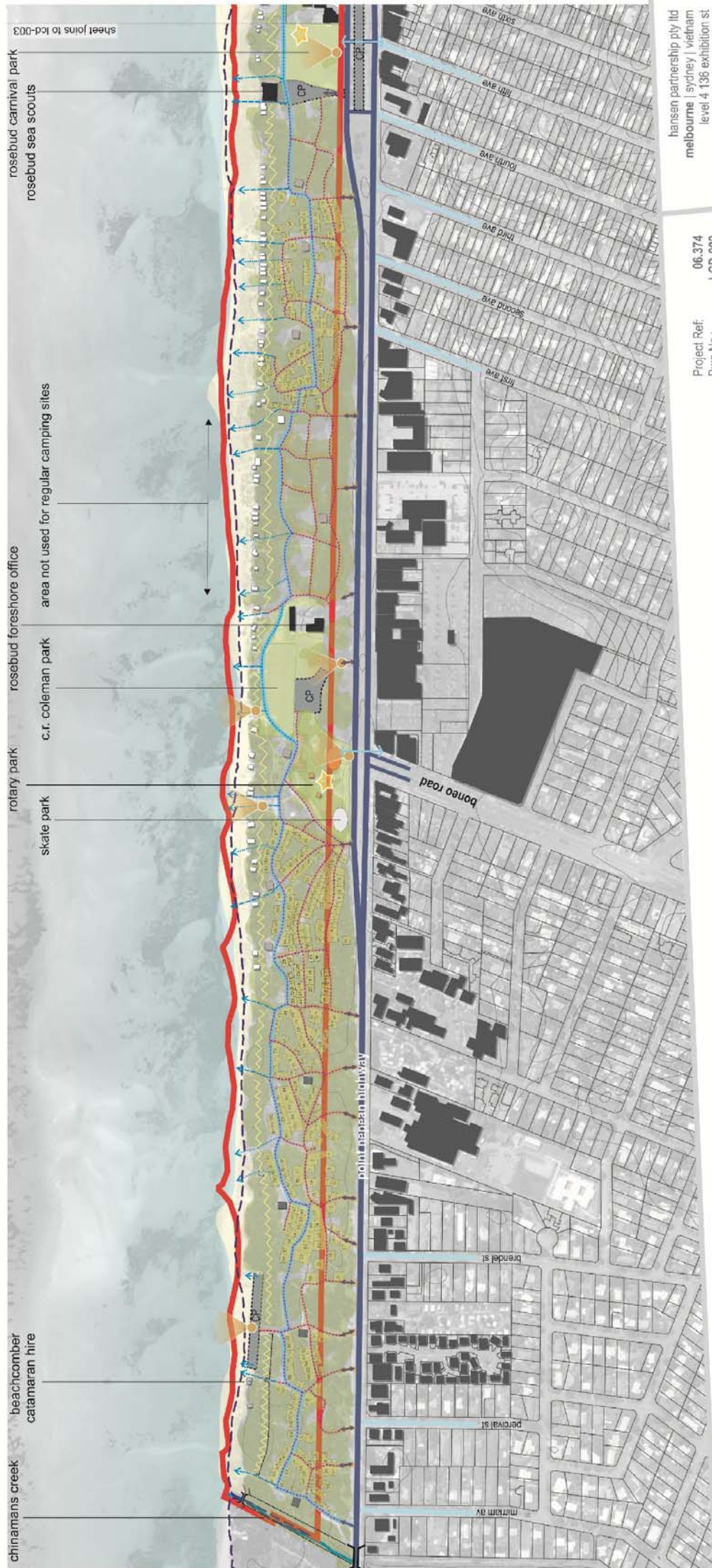
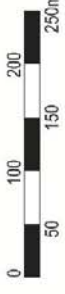


figure 1

Project Ref: 06.374  
 Dwg No.: LCD-002  
 Scale: 1:5,000@A3  
 Date: 21.10.11  
 Revision: F



hansen partnership Pty Ltd  
 melbourne | sydney | vietnam  
 level 4 136 exhibition st  
 melbourne vic 3000  
 t 61 3 9654 8844 f 61 3 9654 8088  
 e info@hansen-online.com.au  
 w hansen-online.com.au





# rosebud coastal management plan

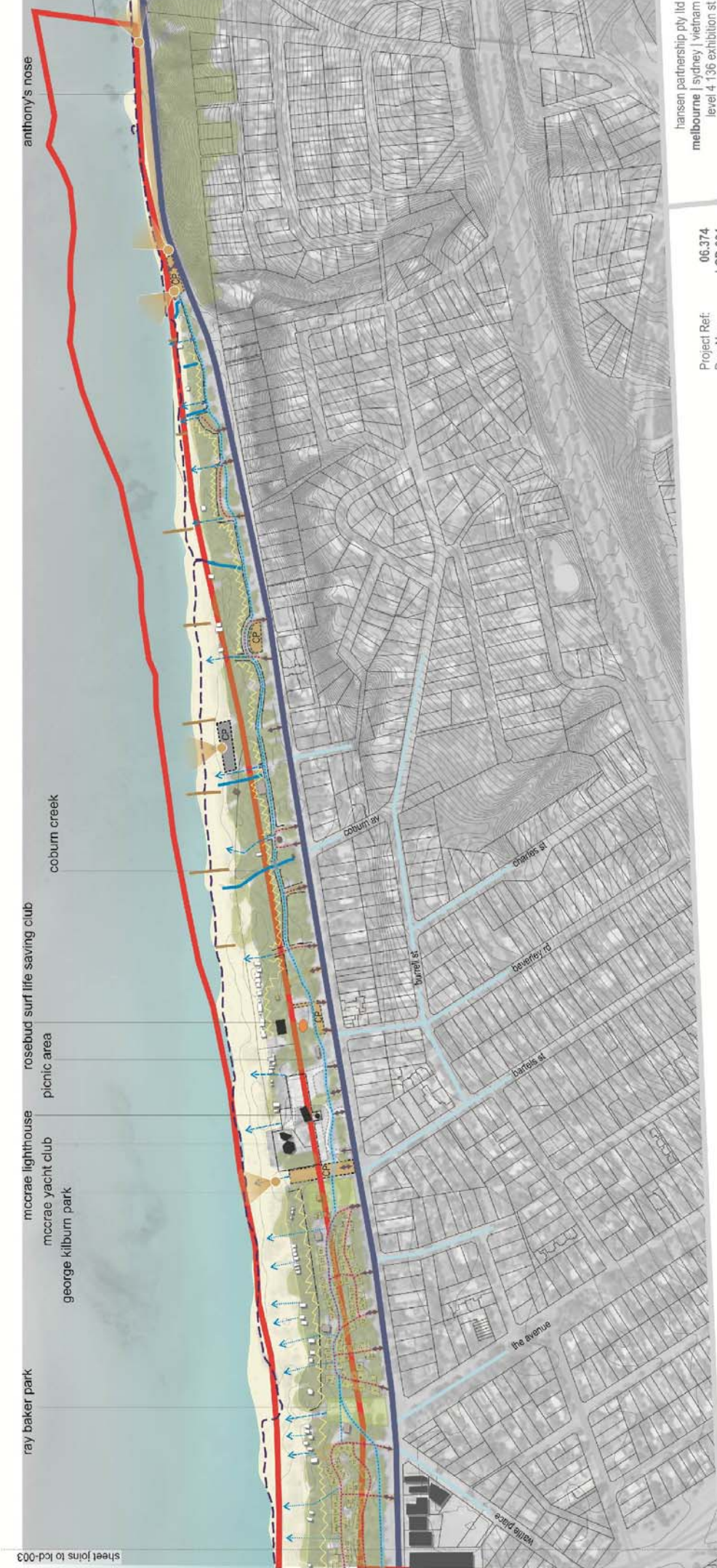
foreshore analysis  
sheet 3

**legend**

	foreshore reserve boundary		lawn		formal pedestrian beach access		buildings		skate park		harbour
	contours at 1m intervals		gravel		informal pedestrian beach access		toilet blocks		views		destination places
	high water mark		asphalt		pedestrian crossings		bathing boxes		visual screens		coastal vegetation
	beach		drainage lines		shared pedestrian and vehicular movement		boqs		limber groyne		
	privately owned land		bridges		vehicular entries		shelters				
	camping sites		limber boardwalks		fencing		playgrounds				
			main roads		pedestrian paths						
			local roads		bay trail						
			seated car park								
			unsealed car park								

**CP** (dashed box)    **CP** (dotted box)

**1**    **2**    **3**



hansen partnership pty ltd  
melbourne | sydney | vietnam  
level 4 136 exhibition st  
melbourne.vic 3000  
t 61 3 9654 8644 f 61 3 9654 8088  
e info@hansen-online.com.au  
w hansen-online.com.au

Project Ref: 06.374  
Dwg No.: LCD-004  
Scale: 1:5,000@A3  
Date: 21.10.11  
Revision: E



figure 3



rosebud coastal management plan - appendix 2  
prepared by hansen partnership for mornington peninsula shire  
amended map 2015

aila victoria medal 2008  
australian institute of  
landscape architects  
(victorian state group)

consultant planner of the year 2006  
consultant planner of the year 2005  
planning institute of australia  
(victoria division)



hansen partnership pty ltd  
**melbourne** | vietnam

level 4 136 exhibition st  
melbourne vic 3000  
t 03 9654 8844 f 03 9654 8088  
e [info@hansen-online.com.au](mailto:info@hansen-online.com.au)  
w [hansen-online.com.au](http://hansen-online.com.au)  
ABN 20 079 864 716 | ACN 079 864 716



## table of contents

<b>appendix 2 - planning &amp; legislative framework</b>	<b>3</b>
1.1 legislation	3
1.2 coastal and regional policy and plans	5
1.3 local policy and plans	6
1.4 relevant strategic studies	6



## appendix 2 - planning & legislative framework

### 1.1 legislation

#### Commonwealth legislation

##### *Environment Protection and Biodiversity Conservation Act 1999*

The *Environment Protection and Biodiversity Conservation Act 1999* delineates areas of Commonwealth and State responsibility for the natural environment. This Act defines the Commonwealth's role in managing the environment as limited to matters of national environmental significance, such as Ramsar wetlands. The Act aims primarily to provide for the protection of the environment, promote ecologically sustainable development and promote the conservation of biodiversity.

#### State legislation, policy and plans

##### *Coastal Management Act 1995*

The *Coastal Management Act 1995* provides for the coordinated strategic planning of Victoria's coastal resources. The Act established the Victorian Coastal Council (VCC) and three Regional Coastal Boards to facilitate this process.

The *Coastal Management Act 1995* requires an application for consent to use or develop coastal Crown land. When considering an application, the Minister for Environment and Climate Change must consider the consistency of proposals with the Victorian Coastal Strategy, relevant Land Conservation Council and Environment Conservation Council recommendations and relevant Management Plans and Coastal Action Plans.

##### *Crown Land (Reserves) Act 1978*

The *Crown Land (Reserves) Act 1978* provides for the reservation of Crown land for a variety of public purposes, the appointment of committees of management to manage those reserves, and for leasing and licensing of reserves for purposes approved by the Minister for Environment and Climate Change.

##### *Environment Protection Act 1970*

This Act provides the legal framework by which environmental objectives, regulations and goals are established throughout the State for industry, commerce and the general public. The Act reflects the precautionary principle, the protection of intergenerational equity, the polluter pays principle, and the protection of biodiversity. It puts the responsibility for sound environmental management on Victorian businesses, communities and individuals. The Act aims to achieve greater environmental performance through shifting to collaboration and co-regulation as opposed to the traditional 'command and control'.

##### *Flora and Fauna Guarantee Act 1988*

The *Flora and Fauna Guarantee Act 1988* incorporates a wide range of measures for conserving all Victoria's native plants and animals. Its broad aim is to prevent the extinction of any more plants and animals, both by saving those that are threatened and by preventing those that are currently secure from being threatened.



### ***Heritage Act 1995***

This Act provides protection and conservation of places and objects of cultural significance and the registration of these places. The Act protects all categories of historic cultural significance relating to non-Aboriginal settlement of Victoria.

### ***Planning and Environment Act 1987***

The *Planning and Environment Act 1987* establishes State planning and land use processes including provisions for planning schemes for individual council areas. A planning scheme is a statutory document, which sets out objectives, policies and provisions relating to the use, development, protection and conservation of land in an area to which it applies.

A planning scheme regulates the use and development of land through planning provisions to achieve those objectives and policies. Every planning scheme includes the State Planning Policy Framework. The framework comprises general principles for land use and development in Victoria and specific policies dealing with settlement, environment, housing, economic development, infrastructure, and particular uses and development.

The Local Planning Policy Framework sets a local and regional strategic policy context for a municipality including Crown land. It comprises the Municipal Strategic Statement and specific local planning policies.

### ***Victorian Coastal Strategy (2008)***

The Victorian Coastal Strategy (VCS) is the State Government's policy commitment for coastal, estuarine and marine environments in Victoria. It provides a long-term vision for the planning, management and sustainable use of our coast, and the policies and actions Victorians will need to implement over the next five years to help achieve that vision.

The VCS 2008 is established under the *Coastal Management Act 1995*, and is the third VCS to be produced since 1997 – it is reviewed every five years.

### ***Siting and Design Guidelines for Structures on the Victorian Coast (1998).***

These guidelines define the issues which should be considered in the siting, design and the improvement of existing structures in coastal areas, raising awareness of more sensitive design and development.

### ***Landscape Setting Types for the Victorian Coast (1998).***

This guide aims to provide a better understanding of the landscape character of the coast by identifying significant features and characteristics of various sections. The Rosebud Foreshore is characterised as Urban/Semi Urban Flatlands.

The identified landscape character should be considered and respected in the development of proposals for structures at specific locations, in order to achieve integrated development that is sympathetic to the surrounding landscape.



## 1.2 coastal and regional policy and plans

### *Central Coastal Board & Coastal Action Plans*

The Central Coastal Board provides strategic planning advice to the Minister for Environment and Climate Change for the area of coast from Breamlea, which is the western boundary of the City of Greater Geelong, to Andersons Inlet at the eastern boundary of Bass Coast Shire. Under the *Coastal Management Act 1995*, the Board may prepare Coastal Action Plans for its region or a part of its region.

Coastal Action Plans (CAPs) help to implement the Victorian Coastal Strategy at the regional scale. CAPs enable the broad principles and priorities identified in the Strategy to be further developed and applied at a sub-regional or issue based level. They provide strategic direction for the future management of an area of coast by identifying necessary priorities, actions and outcomes.

Currently two Coastal Action Plans apply to the Rosebud Foreshore Reserve.

The *Mt Eliza to Point Nepean Coastal Action Plan (2005)*. This CAP provides a long-term framework to manage this section of the coast and an integration mechanism that encourages high-level co-ordination for the resolution of coastal planning issues.

The *Boating Coastal Action Plan (2007)* for the Central Region. The Boating CAP lists the McCrae Yacht Club, Rosebud Pier and Rosebud Motor Boat Squadron as local facilities and recommends that these remain local facilities in the future. A local boating facility is described as a locally significant facility that generally caters for the local catchment area. For the Rosebud Motor Boat Squadron facility further investigation is required to consider a change in its status to informal, potentially downgrading the facility.

### *Port Phillip and Westernport Catchment Management Authority & the Regional Catchment Strategy*

The Port Phillip and Westernport Catchment Management Authority (PPWCMA) promotes and coordinates improved land, water and biodiversity management throughout the Port Phillip and Westernport Catchment.

The Port Phillip and Western Port Regional Catchment Strategy, written by the PPWCMA, describes the natural assets of the region, and how they are interrelated, and what needs to be done to manage and use the assets in a sustainable way.



## 1.3 Local policy and plans

### *Mornington Peninsula Planning Scheme*

The Mornington Peninsula Planning Scheme sets out policies and controls for the use, development and protection of land within the municipality. The Planning Scheme is based on model planning provisions for Victoria called the Victoria Planning Provisions (VPPs), which allow for each municipality to insert certain local provisions.

The Municipal Strategic Statement of the Mornington Peninsula Shire Planning Scheme contains following policy that applies to the Rosebud Foreshore:

- The Mornington Peninsula Framework Plan – Clause 21.04
- Foreshores and Coastal Areas – Clause 21.08

The Mornington Peninsula Shire Planning Scheme contains local controls over the Reserve. Specifically the Rosebud Foreshore is affected by the following:

- Environmental Significance Overlay Schedule 17 – Streamlines
- Environmental Significance Overlay Schedule 25 – Port Phillip Coastal Area

The land within the Reserve is zoned Public Park and Recreation Zone.

## 1.4 relevant strategic studies

- *Rosebud Foreshore Works Plan (2006).*
- *Draft Rosebud Activity Centre Structure Plan (2009)*
- *Southern Peninsula Aquatic Centre Feasibility Study (2005).*
- *Caravan Park Fire Safety Guideline (2006).*
- *Dogs on leashes policy.*
- *Victorian Coastal Vulnerability study (1992).*
- *Rosebud Foreshore Climate Change Assessment.(2009).*
- *An archaeological survey of the Rosebud Foreshore Victoria (2000).*

Copies of all these studies are available from the Mornington Peninsula Shire.



rosebud coastal management plan - appendix 3  
prepared by hansen partnership for mornington peninsula shire  
amended may 2015

aila victoria medal 2008  
australian institute of  
landscape architects  
(victorian state group)

consultant planner of the year 2006  
consultant planner of the year 2005  
planning institute of australia  
(victoria division)



hansen partnership pty ltd  
**melbourne** | vietnam

level 4 136 exhibition st  
melbourne vic 3000  
t 03 9654 8844 f 03 9654 8088  
e [info@hansen-online.com.au](mailto:info@hansen-online.com.au)  
w [hansen-online.com.au](http://hansen-online.com.au)  
ABN 20 079 864 716 | ACN 079 864 716



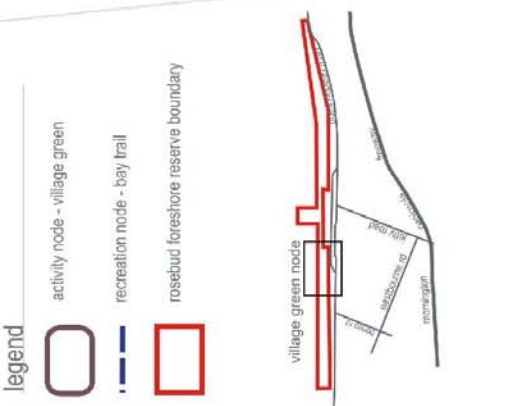
## table of figures

### appendix 3 - maps of main actions

- figure 1 – rosebud central activity node
- figure 2 – boneo road recreational node
- figure 3 – rosebud pier recreational node
- figure 4 – mccrae lighthouse recreational node

# rosebud coastal management plan

actions  
rosebud centre  
activity node

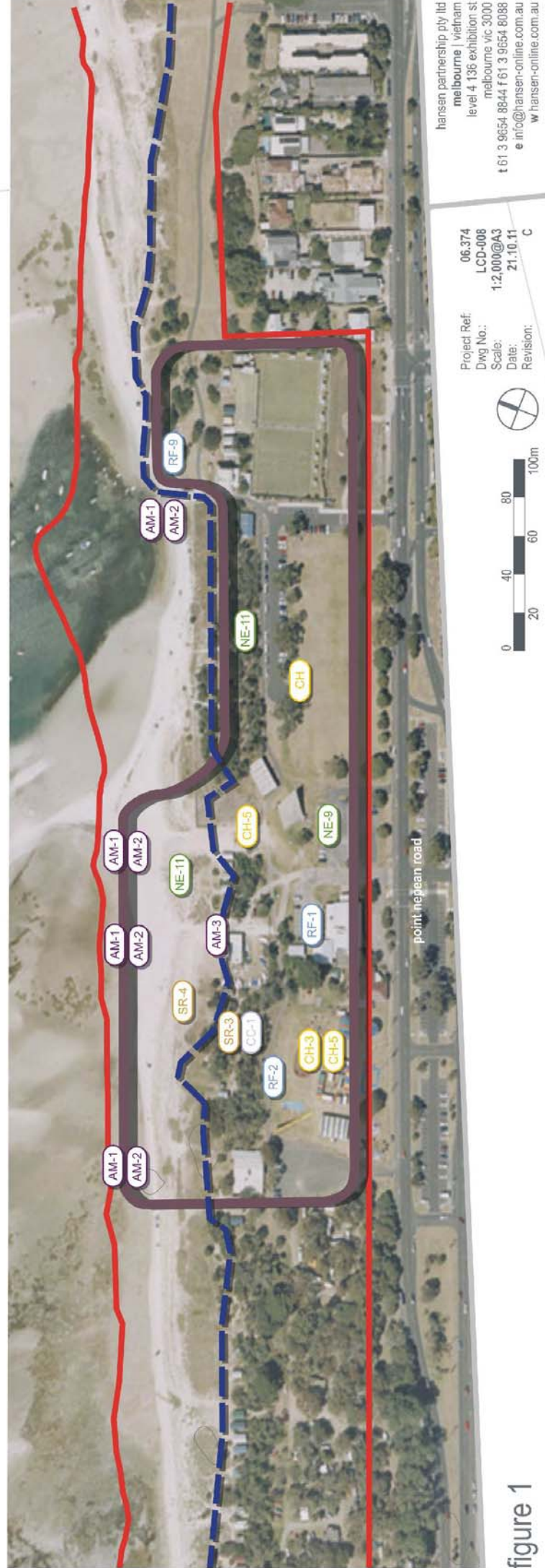


- CC** strategies for climate change
- CC-1**
    - Monitor impacts of climate change on the foreshore such as changes to the rate of erosion or accretion.
    - Take an active part in the Coastal Adaptation Decision Pathways project undertaken by the Association of Bayside Municipalities.
  - CH** strategies for cultural heritage
    - CH-1**
      - Resurvey the foreshore reserve to determine the status of previously recorded shell midden sites and examine the area for previously unreported sites. This survey is to be conducted outside of the holiday camping period.
      - Prior to any proposed development, background research and a field survey are to be undertaken of the development area to determine the presence or absence of Aboriginal cultural material.
      - If any earthworks are to be undertaken, these earthworks are to be monitored by an Aboriginal Community Representative to ensure that if any Aboriginal cultural material is revealed appropriate identification can occur.
    - CH-3**
      - Require all new major works and development to undertake an assessment of likely aboriginal sensitivity/impacts.
    - CH-5**
      - As part of the Master Plan for the Rosebud Central Activity Node Action No. RF-1, investigate the potential heritage and community value of the Sound Shell prior to making a decision whether to retain, remove or relocate it.

- AM** strategies for access and movement
- AM-1**
    - Undertake a detailed audit of current pedestrian access points between the foreshore and beach to ensure suitable access is provided, while protecting environmental qualities.
  - AM-2**
    - As part of the detailed audit of current pedestrian access points, seek the input of the Shire's Disabled Consultative Committee for inclusive access opportunities. Refer to Action No. AM-1.
  - AM-3**
    - Undertake a detailed design exercise in conjunction with the recommendations of the CAP for cycle paths and walkways, to create a new Bay Trail alignment.
  - SR** strategies for safety and risk management
    - SR-3**
      - Implement the recommendations of the Municipal Fire Prevention Plan (2007), including caravan park inspections, development and implementation of Emergency Management Plans, annual fire hazard inspections, information campaigns, preparation of fire emergency plans for any festivals taking place and Fire Management Plans for Bushland Reserves.
    - SR-4**
      - Engage an Arborist to conduct an audit of existing trees within Activity and Recreation Nodes.
        - Undergo staged removal of senescent (and exotic) trees.
        - In conjunction with the review of camping grounds Action No. RF-6, develop a planning plan to establish replacement trees and canopy coverage for the camping areas.

- RF** strategies for recreational facilities and activities
- RF-1**
    - With the involvement of community and business operators, review the need and location of existing community and recreational facilities within the Rosebud Central Activity Node. Facilities to be reviewed are:
      - Rosebud Bowls Club;
      - Youth Hall;
      - Memorial Hall;
      - Kindergarten; and
      - Undertake a detailed Master Plan for the Rosebud Central Activity Node in consultation with the community and key stakeholders.
  - RF-9**
    - Maintain toilet blocks, playground, barbecues and other facilities to ensure they are kept to a high standard.
    - Seek capital funding from the Crown Land owner Department of Sustainability and Environment.

- NE** strategies for natural environment
- NE-9**
    - In conjunction with the preparation of Master Plans for the Rosebud Central Activity Node, the Bono Road Recreation Node, the Rosebud Pier Recreational Node and the McGrae Lighthouse Recreational Node (refer to Action No. RF-1), provide landscaping treatments which:
      - Retain existing open character;
      - Utilise indigenous coastal vegetation;
      - Define entrances, both pedestrian and vehicular; and
      - Frame view lines into the node and to the
  - NE-11**
    - Investigate opportunity within the Master Plan for the Rosebud Central Activity Node to enhance view lines to the Bay - Refer to Action No. RF-1A.
    - In conjunction with the proposed Bay Trail improvements, promote the orientation of new trail connections to utilise existing view lines and where practical create new view lines to the Bay. Refer to Action No. AM-4.



hansen partnership pty ltd  
melbourne | vietnam  
level 4 136 exhibition st  
melbourne vic 3000  
t 61 3 9654 8644 f 61 3 9654 8088  
e info@hansen-online.com.au  
w hansen-online.com.au

Project Ref: 06.374  
Dwg No.: LCD-008  
Scale: 1:2,000@A3  
Date: 21.10.11  
Revision: C

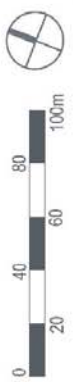


figure 1

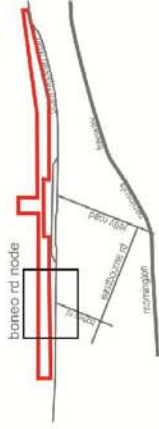


# rosebud coastal management plan

actions  
boneo rd  
recreation node

## legend

- recreation node - boneo rd
- recreation node - bay trail
- rosebud foreshore reserve boundary



## CH strategies for cultural heritage

- CH-1** Resurvey the foreshore reserve to determine the status of previously recorded shell midden sites and examine the area for previously unrecorded holiday camping period.
- Prior to any proposed development, background research and a field survey are to be undertaken of the development area, to determine the presence or absence of Aboriginal cultural material.
- If any earthworks are to be undertaken, these earthworks are to be monitored by an Aboriginal Community Representative to ensure that if any Aboriginal cultural material is revealed appropriate identification can occur.

## CH-3

- Require all new major works and development to undertake an assessment of likely aboriginal sensitivity/impacts.

## SR strategies for safety and risk management

- SR-3** Implement the recommendations of the Municipal Fire Prevention Plan (2007), including caravan park inspections, development and implementation of Emergency Management Plans, annual fire hazard inspections, information campaigns, preparation of fire emergency plans for any festivals taking place and Fire Management Plans for Bushland Reserves.
- SR-4** Engage an Authorist to conduct an audit of existing trees within Activity and Recreation Nodes.
- Undergo staged removal of senescent (and exotic) trees.
- In conjunction with the review of camping grounds Action No. RF-5, develop a planting plan to establish replacement trees and canopy coverage for the camping areas.

## CC strategies for climate change

- CC-1** Monitor impacts of climate change on the foreshore, such as changes to the rate of erosion or accretion.
- Take an active part in the Coastal Adaptation Decision Pathways project undertaken by the Association of Bayside Municipalities.

## RF strategies for recreational facilities and activities

- RF-1** With the involvement of community and business operators, review the need and location of existing community and recreational facilities within the Rosebud Central Activity Node. Facilities to be reviewed are:
  - Rosebud Bowls Club;
  - Youth Hall;
  - Memorial Hall;
  - Kindergarten; and
- Undertake a detailed Master Plan for the Rosebud Central Activity Node in consultation with the community and key stakeholders.

## AM strategies for access and movement

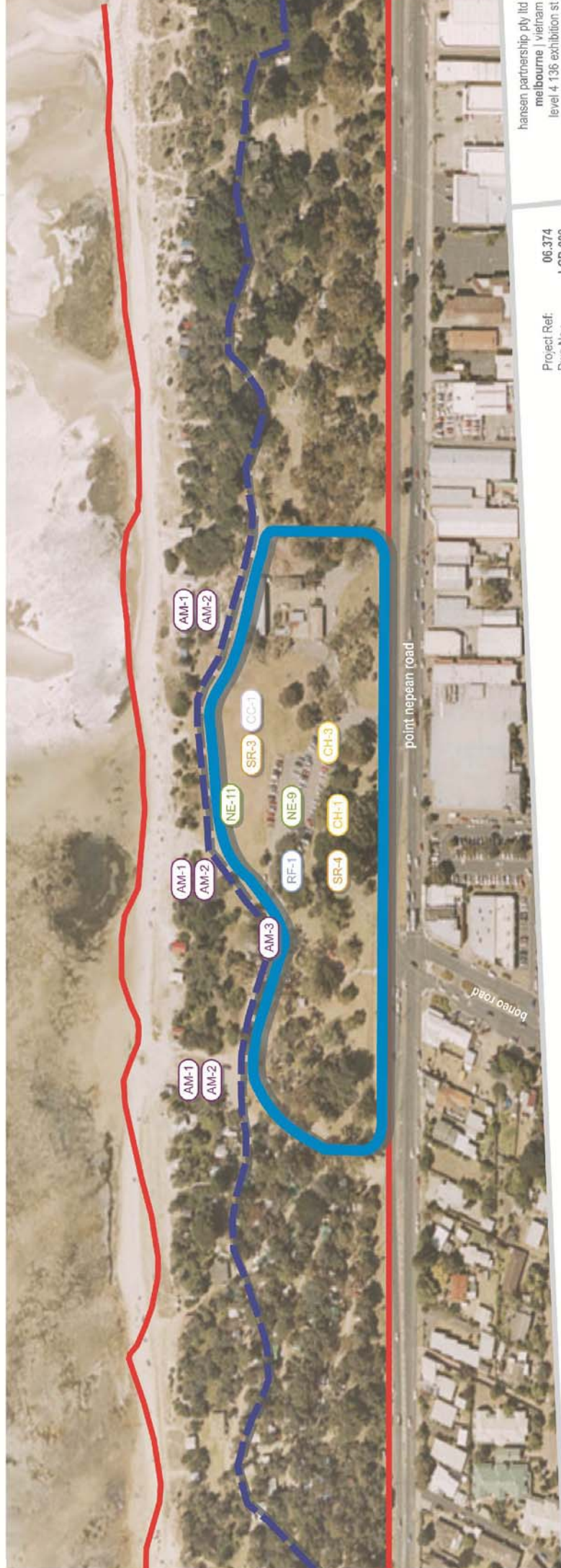
- AM-1** Undertake a detailed audit of current pedestrian access points between the foreshore and beach to ensure suitable access is provided, while protecting environmental qualities.
- AM-2** As part of the detailed audit of current pedestrian access points, seek the input of the Shire's Disabled Consultative Committee for inclusive access opportunities. Refer to Action No. AM-1.
- AM-3** Undertake a detailed design exercise in conjunction with the recommendations of the CAP for cycle paths and walkways, to create a new Bay Trail alignment.

## NE strategies for natural environment

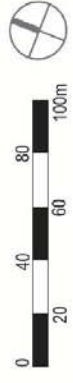
- NE-9** In conjunction with the preparation of Master Plans for the Rosebud Central Activity Node, the Boneo Road Recreation Node, the Rosebud Pier Recreational Node and the McCrae Lighthouse Recreational Node (refer to Action No. RF-1), provide landscaping treatments which:
  - Retain existing open character;
  - Utilise indigenous coastal vegetation;
  - Define entrances, both pedestrian and vehicular; and
  - Frame view lines into the node and to the

## NE-11

- Investigate opportunity within the Master Plan for the Rosebud Central Activity Node to enhance view lines to the Bay. Refer to Action No. RF-1A.
- In conjunction with the proposed Bay Trail improvements, promote the orientation of new trail connections to utilise existing view lines and where practical create new view lines to the Bay. Refer to Action No. AM-4.



Project Ref: 06.374  
 Dwg No.: LCD-009  
 Scale: 1:2,000@A3  
 Date: 21.10.11  
 Revision: C



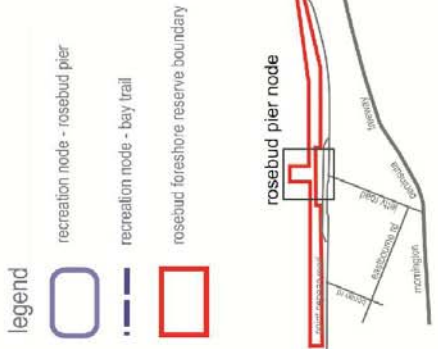
hansen partnership pty ltd  
 melbourne | vietnam  
 level 4 136 exhibition st  
 melbourne vic 3000  
 t 61 3 9654 8844 f 61 3 9654 8088  
 e info@hansen-online.com.au  
 w hansen-online.com.au

figure 2

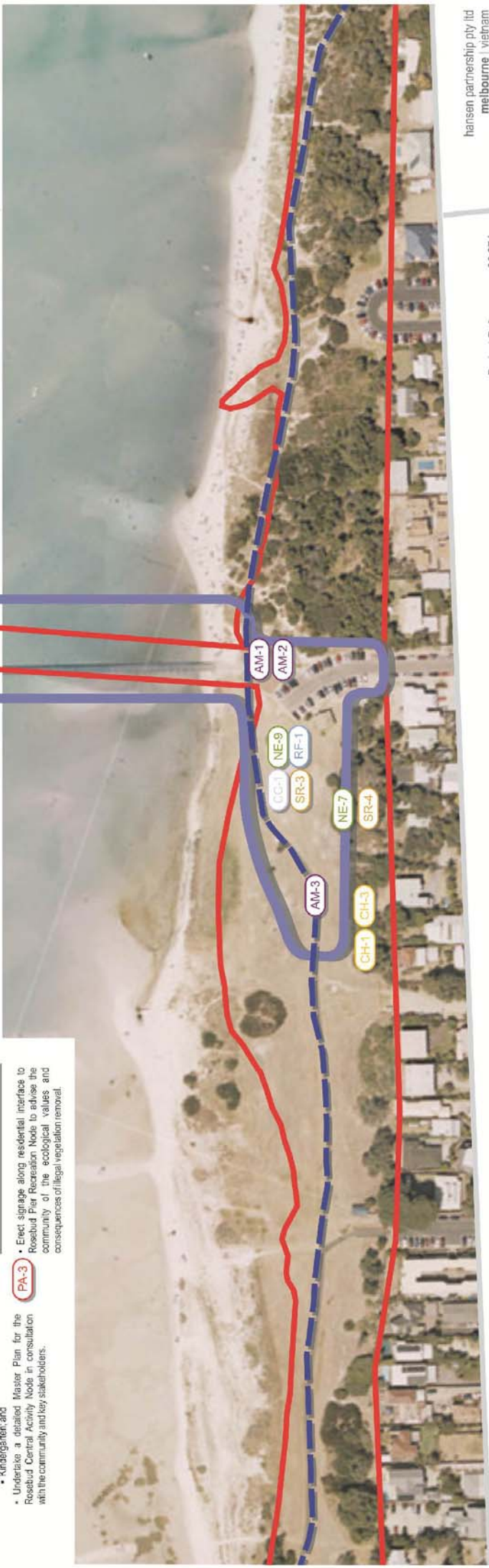


# rosebud coastal management plan

actions  
rosebud pier  
recreation node



- NE** strategies for natural environment
  - NE-7 Monitor for ongoing illegal vegetation removal, with particular attention given to the vegetation along the residential interfaces.
  - NE-9 In conjunction with the preparation of Master Plans for the Rosebud Central Activity Node, the Boreac Road Recreation Node, the Rosebud Pier Recreational Node and the McCreac Lighthouse Recreational Node (refer to Action No. RF-1), provide landscaping treatments which:
    - Retain existing open character;
    - Utilise indigenous coastal vegetation;
    - Define entrances, both pedestrian and vehicular; and
    - Frame view lines into the node and to the
  - NE-11 Investigate opportunity within the Master Plan for the Rosebud Central Activity Node to enhance view lines to the Bay. Refer to Action No. RF-1A.
- AM** strategies for access and movement
  - AM-1 Undertake a detailed audit of current pedestrian access points between the foreshore and beach to ensure suitable access is provided, while protecting environmental qualities.
  - AM-2 As part of the detailed audit of current pedestrian access points, seek the input of the Shire's Disabled Consultative Committee for inclusive access opportunities. Refer to Action No. AM-1.
  - AM-3 Undertake a detailed design exercise in conjunction with the recommendations of the CAP for cycle paths and walkways, to create a new Bay Trail alignment.
- SR** strategies for safety and risk management
  - SR-3 Implement the recommendations of the Municipal Fire Prevention Plan (2007), including caravan park inspections, development and implementation of Emergency Management Plans, annual fire hazard inspections, information campaigns, preparation of fire emergency plans for any festivals taking place and Fire Management Plans for Bushland Reserves.
  - SR-4 Engage an Ardnist to conduct an audit of existing trees within Activity and Recreation Nodes.
    - Undergo staged removal of senescing (end exotic) trees.
    - In conjunction with the review of camping grounds Action No. RF-6, develop a planning plan to establish replacement trees and canopy coverage for the camping areas.
- RF** strategies for recreational facilities and activities
  - RF-1 With the involvement of community and business operators, review the need and location of existing community and recreational facilities within the Rosebud Central Activity Node. Facilities to be reviewed are:
    - Rosebud/Bowis Club;
    - Youth Hall;
    - Memorial Hall;
    - Kindergarten; and
  - Undertake a detailed Master Plan for the Rosebud Central Activity Node in consultation with the community and key stakeholders.
- CC** strategies for climate change
  - CC-1 Monitor impacts of climate change on the foreshore, such as changes to the rate of erosion or accretion.
    - Take an active part in the Coastal Adaptation Decision Pathways project undertaken by the Association of Bayside Municipalities.
  - CH strategies for cultural heritage
    - CH-1 Resurvey the foreshore reserve to determine the status of previously recorded shell midden sites and examine the area for previously unexposed sites. This survey is to be conducted outside of the holiday camping period.
    - Prior to any proposed development, background research and a field survey are to be undertaken of the development area, to determine the presence or absence of Aboriginal cultural material.
    - If any earthworks are to be undertaken, these earthworks are to be monitored by an Aboriginal Community Representative to ensure that if any Aboriginal cultural material is revealed appropriate identification can occur.
    - Require all new major works and development to undertake an assessment of likely aboriginal sensitivity/impacts.



Project Ref: 06.374  
 Dwg No.: LCD-010  
 Scale: 1:2,000@A3  
 Date: 21.10.11  
 Revision: C

hansen partnership pty ltd  
 melbourne | vietnam  
 level 4 136 exhibition st  
 melbourne vic 3000  
 t 61 3 9654 8544 f 61 3 9654 8088  
 e info@hansen-online.com.au  
 w hansen-online.com.au

figure 3

