

MORNINGTON PENINSULA SHIRE

ELECTRIC LINE CLEARANCE MANAGEMENT PLAN

2025-2026

For Energy Safe Victoria

CONTROLLED COPY NO.:
Revision Number: 1
Issue Date: 28 February 2025

Approved by:
Name: Mark Stoemer
Position: Chief Executive Officer

INTERNAL

TABLE OF CONTENTS

This ELC Management Plan has been formatted to align to the structure of the Electrical Safety (Electric Line Clearance) Regulations 2020. The Content sections correspond to the equivalent clauses within the Regulations and Code of Practice.

Contents

Part 2 - 9(4)(a) Name, Address and Telephone Number of the Responsible Person.....	1
Part 2 - 9(4)(b) Name, Position, Address and Telephone Number of the Person who was responsible for the Preparation of the Plan and resolving disputes.....	2
Part 2 - 9(4)(c) Name, position, address and telephone number of the persons who are responsible for carrying out the plan.....	2
Part 2 - 9(4)(d) The telephone number of a person who can be contacted in an emergency that requires clearance of an electric line that the responsible person is required to keep clear of trees.....	2
Part 2 - 9(4)(e) The objectives of the management plan.....	2
Part 2 - 9(4)(f) The land to which the management plan applies.....	4
Part 2 - 9(4)(g) Hazardous Bushfire Areas.....	4
Part 2 - 9(4)(h)(i) The location of each area that the responsible person knows contains a tree that the responsible person may need to cut or remove to ensure compliance with the code and that is indigenous to Victoria.....	4
Processes and procedures for the determination and location of Indigenous trees are updated as per section 9(2).....	4
Part 2 - 9(4)(h)(ii) The location of each area that the responsible person knows contains a tree that the responsible person may need to cut or remove to ensure compliance with the code and that is listed in a planning scheme to be of ecological, historical, or aesthetic significance.....	5
Part 2 - 9(4)(h)(iii) The location of each area that the responsible person knows contains a tree that the responsible person may need to cut or remove to ensure compliance with the code and that is a tree of cultural or environmental significance.....	7
Part 2 - 9(4)(i) The means which the responsible person is required to use to identify a tree specified in paragraph (h)(i), (ii) or (iii).....	8
Part 2 – 9(4)(j)(i) Include detail of the methods to be adopted for managing trees and maintaining a minimum clearance space as required by the Code:.....	8
Part 2 – 9(4)(j)(ii) Specify the method for determining an additional distance that allows for cable sway for the purposes of determining a minimum clearance space in accordance with of Part 3 Division 1 of the code.	13
Part 2 – 9(4)(k) The procedure to be adopted if it is not practicable to comply with the requirements of AS4373-2007 while cutting a tree in accordance with the code.	15

CONTROLLED COPY NO.:

Revision Number: 1

Issue Date: 28 February 2025

Approved by:

Name: Mark Stoemer

Position: Chief Executive Officer

Part 2 – 9(4)(l).....	16
Part 2 – 9(4)(m)	16
Part 2 – 9(3)(n) A description of the measures that must be used to assess the performance of the responsible person under the management plan.	16
Part 2 – 9(4)(o) Details of the Audit processes that must be used to determine the responsible persons compliance with the code.	17
Part 2 – 9(4)(p) The qualifications and experience that the responsible person must require of the persons who are to carry out the inspections, cutting or removal of trees in accordance with the Code.	17
Part 2 – 9(4)(q) Notification and consultation Procedures	19
Part 2 – 9(4)(r) Dispute Resolution Procedures.	20
Part 2 – 9(4)(s) ESV granted exemption under regulation 11	21
Part 2 – 10(6) A responsible person must ensure that a copy of the management plan is published on the responsible person internet site.....	21
Part 2 – 11(2)(a) A responsible person who is granted an exemption must comply with the conditions of the exemption.....	21
SCHEDULE 1- PART 2 - DIVISION 1.....	21
Part 4 Exception to minimum clearance space for structural branches around insulated low voltage electric lines.	21
Part 6 Exception to minimum clearance space for small branches around uninsulated low voltage electric lines in low bushfire risk areas.	23
Part 7 Exception to minimum clearance space for structural branches around uninsulated low voltage electric lines in low bushfire risk areas.	23
Part 8 Owner or Operator of transmission line must manage trees around minimum clearance space.....	24
Part 9 Responsible person may cut or remove hazard tree	24
SCHEDULE 1 –PART 2 –DIVISION 2.....	25
Part 10 A responsible person cutting a tree to achieve compliance must, as far as practicable, cut the tree in accordance with AS 4373-2007 as published or amended from time to time. ..	25
Part 11 Cutting or removal of indigenous or significant trees must be minimised.	25
Part 12 Cutting or removing habitat for threatened fauna.....	26
Part 13 Restriction on timing of cutting or removal if notification is required.	26
Part 14 Restriction on urgent cutting of trees	26
Part 15 Restriction on urgent cutting of trees	26
SCHEDULE 1 –PART 2 –DIVISION 3.....	26
Part 16 Responsible person must publish notice before cutting or removing certain trees.....	26

CONTROLLED COPY NO.:

Revision Number: 1

Issue Date: 28 February 2025

Approved by:

Name: Mark Stoemer

Position: Chief Executive Officer

Part 17 Responsible person must publish notice before cutting or removing certain trees.....	26
Part 19 Notification and record keeping requirements for urgent cutting or removal	26
SCHEDULE 1 –PART 2 –DIVISION 4.....	27
Part 20 Duty relating to the safety of cutting or removal of trees close to an electric line.	27
Part 21 Duty relating to assisting to determining the allowance for conductor sag and sway.	27
Appendix A.....	28
Appendix B.....	30
Appendix C.....	44
.....	44
Appendix D.....	46
Appendix E	47
Appendix F	48
Appendix G.....	51
Appendix H.....	55
Appendix I	57
Appendix J.....	58
Appendix K.....	59
Appendix L	60
Appendix M	76

CONTROLLED COPY NO.:
Revision Number: 1
Issue Date: 28 February 2025

Approved by:
Name: Mark Stoemer
Position: Chief Executive Officer

INTERNAL

ELECTRIC LINE CLEARANCE MANAGEMENT PLAN SUBMITTED BY:

Name: Mornington Peninsula Shire

The following sections are as per the Electrical Safety (Electrical Lines Clearance) Regulations 2020 – Part 2.9 Preparation of Management Plan.

Part 2 – 9(2) Mornington Peninsula Shire (MPS), through its CAMS Tree Management Contractor Ventia, will review the previous year's Electrical Line Clearance Management Plan (ELCMP), commencing January of that year, for submission by 31st March. The review and preparation of the ELCMP is a component of the CN 2640 - CAMS Tree Management Services Contract that MPS has with Ventia and as such is subject to audit by MPS.

The review shall incorporate the assessment of all Planning Regulations related to Flora and Fauna, State and Federal Registers related to Flora and Fauna, declared area and LBRA/HBRA boundaries. Any changes that may be found in any of these during the review process will be updated in the current years ELCMP.

The review shall incorporate the assessment of all training regulations and staff compliance with these regulations. Any changes that may be found during the review process will be updated in the current years ELCMP and implemented through Ventia's annual training plan in conjunction with MPS.

The ELCMP is subject to approval by authorised parties at MPS for process by Energy Safe Victoria (ESV). If a request to submit the ELCMP is received by ESV in writing it is lodged in the Shire's corporate system (currently ECM) and the Shire's Open Space team receive a referral for action within 10 business days. This system tracks actions and responses for finalising the request.

Part 2 – 9(3) A responsible person must ensure that a management plan be prepared under sub-regulation (2) specifies the following -

Part 2 - 9(4)(a) Name, Address and Telephone Number of the Responsible Person.

Name:	Mark Stoemer
Position:	Chief Executive Officer
Address:	90 Besgrove Street Rosebud 3939
Office Telephone No:	1300 850 600

CONTROLLED COPY NO.:
Revision Number: 1
Issue Date: 28 February 2025

Approved by:
Name: Mark Stoemer
Position: Chief Executive Officer

Part 2 - 9(4)(b) Name, Position, Address and Telephone Number of the Person who was responsible for the Preparation of the Plan and resolving disputes.

Name: Tom Haines-Sutherland
Position: Manager - Infrastructure Services
Business Address: 90 Besgrove Street, Rosebud 3939
Telephone No.: 03 5950 1287

Part 2 - 9(4)(c) Name, position, address and telephone number of the persons who are responsible for carrying out the plan.

Name(s): Samantha Dalla Santa
Position(s): Team Leader – Open Space and Trees
Business Address (es): 90 Besgrove Street, Rosebud 3939
Telephone No. (s): 03 5950 1343

Note: Ventia acts as the Service provider for the Mornington Peninsula Shire and is responsible for the execution of the plan. Ventia prepare this plan on behalf of the Mornington Peninsula Shire in accordance with the requirements of Contract Document No. CN 2640

Part 2 - 9(4)(d) The telephone number of a person who can be contacted in an emergency that requires clearance of an electric line that the responsible person is required to keep clear of trees.

Name: MEMO (Municipal Emergency Management Officer)
Emergency Telephone Number: (03 5950 3360)
(24 hours, 7 day a week service)

Part 2 - 9(4)(e) The objectives of the management plan.

The following are identified by MPS, as the Responsible Authority, as the key objectives of this Plan in fulfilling the duties as set out under the Electricity Safety (Electric Lines Clearance) Regulations 2020 and the Code of Practice for Electrical Lines.

CONTROLLED COPY NO.:
Revision Number: 1
Issue Date: 28 February 2025

Approved by:
Name: Mark Stoemer
Position: Chief Executive Officer

Key objectives addressed in the plan include:

- Compliance with the Electricity Safety (Electric Lines Clearance) Regulations 2020.
 - The management plan seeks to ensure that the MPS is compliant to the requirements of the Electricity Safety (Electric Lines Clearance) Regulations 2020 in respect to the declared areas of the MPS that the MPS is responsible for.
- Public Safety, Electrical Safety, Minimise Fire Starts, Reliability of Supply
 - The management plan seeks to ensure the safety of the public and property whilst also allowing reliability of supply through adherence to the management plan and ensuring that clearance zones are maintained in respect to the declared areas of the MPS that the MPS is responsible for.
- Provision of a safe working place for employees (including contractors) of the CAMS Tree Management Services Contractor.
- Compliance to the Code of Practice on electrical safety for work on or near high voltage electrical apparatus – The Blue Book 2022.
 - The MPS's contractor, Ventia, strive to provide a safe working place for employees involved in this activity. The Policies and Procedures are part of a live framework called GMS (Global Management System) that will be audited by the MPS on an annual basis. Ventia are compliant to the standards including:
 - AS/NZS ISO 9001:2016 – Quality Standard
 - ISO 31000:2009 – Risk Management Principles and Guidelines
 - AS/NZS ISO 14001:2004 – Environmental Management Systems
 - AS/NZS 4701:2001 - Health and Safety Management Systems
- Management of vegetation to maximise the amenity value of MPS trees.
 - MPS CN2640 CAMS Tree Management Services Contract provides activity specifications Electrical Lines Clearing (ELC) and Vegetation Tree Management (VTM) that require conformance to AS4373-2007 Pruning of Amenity Trees when conducting tree clearing operations for Electric Lines Clearance.
- Protection of areas of important vegetation which may be deemed as such based on those areas containing botanically, historically, or culturally important vegetation or vegetation of outstanding aesthetic or ecological significance, and/or the habitat of rare or endangered species.
- Community satisfaction with the way in which the necessary works will be conducted.
 - Whilst lines clearance is routinely conducted in accordance with the Electricity Safety (Electric Lines Clearance) Regulations 2020. and AS 4373-2007 Pruning of Amenity Trees, it remains a possibility that affected residents will be unhappy about actions conducted on the nature strip. The ELC Activity under which these works are carried out seeks to limit to a maximum of 30% the removal of live foliage that can be removed as part of the power lines clearance activity and where a tree is rendered Arboriculturally unviable it stipulates that a tree can only be removed with the approval of the Team Leader – Open Space and Trees.

CONTROLLED COPY NO.:
Revision Number: 1
Issue Date: 28 February 2025

Approved by:
Name: Mark Stoemer
Position: Chief Executive Officer

Part 2 - 9(4)(f) The land to which the management plan applies.

The area to which this document has been mapped is taken from a GIS shape file provided by the CFA (file date 19/12/2022) and includes all the declared urban areas managed by the MPS (Appendix A).

Part 2 - 9(4)(g) Hazardous Bushfire Areas

Maps representing the Low Bushfire Risk Area (LBRA) and Hazardous Bushfire Risk Area (HBRA) in the declared area of the Mornington Peninsula have been developed from a GIS shape file provided by the CFA (file date 19/12/2022) (Appendix B).

Mornington Peninsula Shire work closely with the CFA and at agreed intervals a review of HBRA maps will be undertaken. This review includes other organisations and stake holders.

Part 2 - 9(4)(h)(i) The location of each area that the responsible person knows contains a tree that the responsible person may need to cut or remove to ensure compliance with the code and that is indigenous to Victoria.

Trees indigenous to Victoria are located within the declared urban area boundaries detailed on the maps provided in Appendix A and B. Under the MPS's Planning Scheme native trees are broadly covered by Vegetation Protection (VPO) and Environmentally Significant Overlays (ESO) and detailed in relevant schedules to these overlays.

Planning overlays clearly and concisely indicate protection areas where indigenous vegetation is predominantly located. These can be located at <https://mapshare.vic.gov.au/vicplan/>. The Mornington Peninsula planning scheme can be accessed via:

<https://www.planning.vic.gov.au/schemes-and-amendments/browse-planning-schemes>

Areas of vegetation indigenous to the Mornington Peninsula can also be determined through access to the DEECA Biodiversity web mapping and reporting tool (<https://maps2.biodiversity.vic.gov.au/Html5viewer/index.html?viewer=NatureKit>) and Native Vegetation Information Management (NVIM) system (<https://www.dcceew.gov.au>).

This document will be made available to all staff who will be undertaking lines clearance inspections in declared areas where native vegetation may be present.

Processes and procedures for the determination and location of Indigenous trees are updated as per section 9(2).

CONTROLLED COPY NO.:
Revision Number: 1
Issue Date: 28 February 2025

Approved by:
Name: Mark Stoemer
Position: Chief Executive Officer

Part 2 - 9(4)(h)(ii) The location of each area that the responsible person knows contains a tree that the responsible person may need to cut or remove to ensure compliance with the code and that is listed in a planning scheme to be of ecological, historical, or aesthetic significance.

The MPS has a database that captures significant trees throughout the peninsula; however, MPS do not have extensive lists /maps relating to trees of ecological, historical or aesthetic significance under power lines. Planning overlays clearly and concisely indicate protection areas where vegetation of ecological, historical or aesthetic significance is located.

The MPS Planning Scheme varies from property to property with various planning controls affecting vegetation being applied. The major planning controls seek to protect trees that are of ecological, historical or aesthetic value. These would include:

- Environmental Significance Overlay
- Vegetation Protection Overlay
- Significant Landscape Overlay
- Heritage Overlay

Trees covered by these planning controls would be defined as indigenous species now rare or endangered on the Mornington Peninsula, indigenous or introduced trees with historical significance and/or indigenous or introduced trees that are considered to have exceptional growth form. Planning overlays for the MPS can be located as per 9(4)(h)(i).

The National trust has also nominated to the Register of Significant Trees one individual tree and one tree grouping that are located on the nature strip within the Declared area (<http://trusttrees.org.au/>).

Trees of Significance and Heritage Trees

- Vicinity of Centenary St, Prince St, Henry St and Stringer Rd, Blairgowrie, *Melaleuca lanceolata* (Moonah)
- 27 Weir St Rye (Pepper Tree)
- 206 Jetty Rd Rosebud (Smooth Barked Apple Gum)
- Ranelagh Estate, in particular Wimbleton Ave, Mt Eliza, *Hesperocyparis macrocarpa* (Monterey Cypress) and *Eucalyptus gomphocephala* (Tuart)
- Balnarring Avenue of Honour, Balnarring Rd, Balnarring, *Hesperocyparis macrocarpa* (Monterey Cypress)
- Progress Hall and Avenue of Honour, 67 Byrnes Rd, Shoreham

The following is a list of all the Heritage Overlays which include tree controls and where some trees could be on public land.

- HO1 Sorrento Historic Precinct - large area, includes Sorrento Park
- Progress Hall and Avenue of Honour, 67 Byrnes Rd, Shoreham
- HO46 & HO330 (Flinders Foreshore Precinct) Cable Station Site

CONTROLLED COPY NO.:
Revision Number: 1
Issue Date: 28 February 2025

Approved by:
Name: Mark Stoemer
Position: Chief Executive Officer

- HO49 Tanti Park Farm Complex, now part Community Centre
- HO55 Schnapper Point, later Mornington Cricket Ground, later Royal, later Mornington Park
- HO61 Mount Martha Hotel, later Mount Martha House (State)
- HO147 Chechingurk, Later The Briars Farm Complex, Garden & Trees (State)
- HO148 The Briars Landscapes
- HO159 Mount Martha Public Park Picnic Area Plantation
- HO165 Point Nepean Heritage Buildings Precinct (State & National)
- HO170 Old Shire Offices Dromana
- HO213 Ranelagh Estate Reserves (State)
- HO214 Infant Welfare Centre Mt Eliza
- HO255 Collins Settlement Site (State)
- HO270 Tyabb Public Cemetery
- HO289 Tyabb Residential Commercial & Civic Precinct
- HO290 Palm Beach Estate Somers
- HO296 Fruit growers Reserve Somerville
- HO330 Flinders Foreshore Precinct

Internal operational standards and procedures for the management of Flora and Fauna held by the Parks and Roadsides Service Provider, Ventia Pty Ltd, would also apply.

Additional resources include:

- The Flora and Fauna Guarantee Act (1988)
https://www.environment.vic.gov.au/_data/assets/pdf_file/0021/50448/Advisory-List-of-Rare-or-Threatened-Plants-in-Victoria-2014.pdf
- DEECA Biodiversity web mapping and reporting tool.
<https://maps2.biodiversity.vic.gov.au/Html5viewer/index.html?viewer=NatureKit>

When working in areas where these overlays apply, or significant trees occur, the Arborist in charge of Lines Clearance Operations will check with the Responsible Authority of the status of trees near Electrical Assets.

Trees identified as habitat trees through inspection by a suitably qualified inspector for endangered and non-endangered fauna species, as indicated in the Flora and Fauna Guarantee Act will be pruned outside of the breeding season for that species. The season will be determined through identification of the fauna. Where identification cannot be verified by council or Ventia employees, DEECA will be contacted to assist in the confirmation of the species.

If the tree cannot be pruned without disturbing said fauna, translocation will occur with the guidance of qualified Council, Ventia and/or DEECA employees.

CONTROLLED COPY NO.:
Revision Number: 1
Issue Date: 28 February 2025

Approved by:
Name: Mark Stoemer
Position: Chief Executive Officer

This document will be made available to all staff who will be undertaking lines clearance inspections in declared areas where vegetation of ecological, historical, or aesthetic significance may be present.

Processes and procedures for the determination and location of trees with ecological, historical, or aesthetic significance are updated as per section 9(2).

Part 2 - 9(4)(h)(iii) The location of each area that the responsible person knows contains a tree that the responsible person may need to cut or remove to ensure compliance with the code and that is a tree of cultural or environmental significance.

The MPS has a database that captures significant trees throughout the peninsula; however, MPS do not have extensive lists /maps relating to trees of cultural or environmental significance under power lines. Planning overlays clearly and concisely indicate protection areas where vegetation of cultural or environmental significance is located.

The MPS Planning Scheme varies from property to property with various planning controls affecting vegetation being applied. The major planning controls seek to protect trees that are of cultural or environmental significance.

- Environmental Significance Overlay
- Vegetation Protection Overlay
- Significant Landscape Overlay
- Heritage Overlay

Planning overlays for the MPS can be located as per 9(3)(g)(i). Additional resources include:

- The Flora and Fauna Guarantee Act (1988)
 - https://www.environment.vic.gov.au/_data/assets/pdf_file/0021/50448/Advisory-List-of-Rare-or-Threatened-Plants-in-Victoria-2014.pdf
- The Victorian Heritage Register
 - <https://vhd.heritagecouncil.vic.gov.au/>
- The Victorian Aboriginal Heritage Register
 - <https://www.aboriginalvictoria.vic.gov.au/victorian-aboriginal-heritage-register>

Internal operational standards for the management of Flora and Fauna held by the CAMS Tree Management Contractor, Ventia, would also apply.

This document will be made available to all staff who will be undertaking lines clearance inspections in declared areas where vegetation of cultural or environmental significance may be present.

Processes and procedures for the determination and location of trees with cultural or environmental significance are updated as per section 9(2).

CONTROLLED COPY NO.:
Revision Number: 1
Issue Date: 28 February 2025

Approved by:
Name: Mark Stoemer
Position: Chief Executive Officer

Part 2 - 9(4)(i) The means which the responsible person is required to use to identify a tree specified in paragraph (h)(i), (ii) or (iii)

Processes and procedures for the identification of a tree specified in 9(4)(h) will be implemented by accessing links associated with planning, heritage and environment, as listed in 9(4)(h), to ascertain the potential significance of the vegetation. These include:

- Planning Overlays and schemes
 - <https://mapshare.vic.gov.au/vicplan/>
 - <https://www.planning.vic.gov.au/schemes-and-amendments/browse-planning-schemes>
- The Flora and Fauna Guarantee Act (1988)
 - https://www.environment.vic.gov.au/data/assets/pdf_file/0021/50448/Advisory-List-of-Rare-or-Threatened-Plants-in-Victoria-2014.pdf
- The Victorian Heritage Register
 - <https://vhd.heritagecouncil.vic.gov.au/>
- The Victorian Aboriginal Heritage Register
 - <https://www.aboriginalvictoria.vic.gov.au/victorian-aboriginal-heritage-register>
- DEECA Biodiversity web mapping and reporting tool
 - <https://maps2.biodiversity.vic.gov.au/Html5viewer/index.html?viewer=NatureKit>
- Native Vegetation Information Management (NVIM) system
 - <https://nvim.delwp.vic.gov.au>

Processes and procedures for the identification of a tree specified in 9(4)(h) are updated as per section 9(2).

ELC trained Personnel shall be made aware of vegetation specified in 9(4)(h) by:

- Notation within the database, and consequentially transmitted onto worksheets generated through the database, indicating vegetation significance within an individual span to all staff undertaking vegetation clearance.
- Notation within the database, and consequentially transmitted onto inspection records, indicating vegetation significance within an individual span to all staff undertaking lines clearance inspections.
- The supply of this document to all staff who will be undertaking lines clearance inspections in declared areas.

Part 2 – 9(4)(j)(i) Include detail of the methods to be adopted for managing trees and maintaining a minimum clearance space as required by the Code:

General

The MPS is a diverse environment with an urban and rural interface that is often difficult to separate. There are large sections of the declared area where the roadside consists of remnant bushland vegetation. As such it is not possible to calculate the tree population affected by lines

CONTROLLED COPY NO.:
Revision Number: 1
Issue Date: 28 February 2025

Approved by:
Name: Mark Stoemer
Position: Chief Executive Officer

clearance activity. However, to facilitate the identification and maintenance of minimum clearance space CAMS Tree Management Contractor, Ventia, utilising GIS system and associated database currently has inspection records for 17015 Spans within the declared area, 697 of which have been identified as being in HBRA and 16318 within LBRA. These have been located with the assistance of geo-spatial information of poles and LIS numbers supplied through GIS shape files provided by the CFA (file date 19/12/2022)

Method of Maintaining Clearance Space and Reducing Re-growth

The determination of the applicable distance for the clearance space of a span is predicated on Schedule 2 graph 1–6 and Figure 1-5 of the code. These graphs and figures are used to identify the clearance space required for the middle two thirds of a span. All Inspection and pruning staff are supplied with copies of these graphs and figures. The GIS system utilised for the inspection and programming of work related to the declared lines network in the MPS calculates the length of the span. This is used in conjunction with the graphs by inspectors and pruning crews to determine the applicable distance for the clearance space of the span. MPS will work with UE to verify the accuracy of these lengths.

Vegetation inspection for compliance is monitored through the annual inspection program, with pruning conducted on a biennial program. If it is determined that regrowth will occur within the pruning cycle and therefore compliance cannot be maintained, with respect to 9(4)(i), alternative methods will be investigated and implemented. These may include:

- Increased pruning frequency, based on significance of the vegetation.
- Exceptions under Part 2 Div 1 (4), (5), (6) & (7) of the Code of Practice.
- Requests for alternative engineering solutions.
- Removal and replacement with more suitable species.

Identification of work Required.

The CAMS Tree Management Contractor, Ventia are responsible for undertaking an annual inspection program on spans within the Declared Urban Area. The method used to monitor conditions in the area adjacent to the clearance space is achieved using a rangefinder to measure the distance between the vegetation and the closest conductor in each span.

Trees that do not comply with Electricity Safety (Electric Line Clearance) Regulations 2020 as determined by audits by the Distribution Business (DB) and/or Electrical Safety Victoria (ESV) are brought to Council's attention on an ad hoc basis by the DB, and/or ESV. These reports specify the type of tree, the relevant feeder pole number, street address and proximity to the conductors. The MPS records this information on an asset management database and, in conjunction with our audit process, assign priority time frames and actions the required works.

CONTROLLED COPY NO.:
Revision Number: 1
Issue Date: 28 February 2025

Approved by:
Name: Mark Stoemer
Position: Chief Executive Officer

Notification of Tree Pruning to be Carried Out.

Where vegetation is assessed as having the potential to infringe/encroach the required minimum clearance affected customers of the MPS shall be notified of any tree works associated with this activity. Where required, a written notice shall be left by the CAMS Tree Management Contractor for the owner of the abutting property prior to commencement of all other the work (Appendix C). The CAMS Tree Management Contractor shall advise residents via the Mornington Peninsula Newspaper network (Appendix D). If pruning has not been completed within the 60-day time frame the notification will be republished. In addition, MPS may choose to advise the Ward Councillor and notify of any major operations where removals associated with this activity are required.

The MPS Customer Service team has several avenues for the resolution of disputes. This includes personal discussion with Team Leader – Open Space and Trees, Contract Manager Open Space, Shire Arborist. Should any resident's objection not be settled within seven days of the notification all work associated with the objection then works may be suspended until the matter has been resolved. Whilst waiting for a resolution the tree will be cut to a minimum distance of 1 metre from uninsulated lines and 300mm from insulated lines to remove the urgent nature of the request.

Please refer to Appendix E for the Mornington Peninsula Shire Dispute Resolution Process.

Clearance Program

The aim of the MPS Electrical Lines Clearing Program is to manage the encroachment of all vegetation into the Electricity network clearance space and the clearance space as defined by the Electrical Safety (Electrical Line Clearance) Regulations 2020 in the declared urban areas.

The ELC Program will, on a proactive and reactive basis identify and action pruning works throughout the MPS declared area. The ELC Program will prune all trees to the required clearances from the lines nominally on a 24-month cyclic program (LBRA) and a 12month cyclic program (HBRA) unless inspections require an increased attendance frequency.

Inspections of spans within the HBRA are undertaken from September 1st and are concluded by October 31st. Through this inspection program any spans that are identified as not compliant or will become non-compliant during the declared fire season, are scheduled for clearance prior to December 1st or the start of the fire season, whichever comes first.

The Electrical Lines Clearance Program for 2024-2025 is detailed in Appendix F of this plan.

CONTROLLED COPY NO.:
Revision Number: 1
Issue Date: 28 February 2025

Approved by:
Name: Mark Stoemer
Position: Chief Executive Officer

Decision Flowchart

The following diagram outlines the decision-making process regarding maintaining line clearance.

Is any part of the tree going to penetrate the clearance space of the powerline during the period of the next pruning cycle? **NO**→ Inspect the tree prior to next pruning cycle.

YES↓

Can the tree be pruned to allow for appropriate clearance and regrowth within the pruning cycle without loss of amenity value or increase to public risk? **YES** → Prune tree according to AS-4373 Pruning of Amenity Trees.

NO↓

Weigh options of a shorter pruning cycle, tree removal, exception to minimum clearance space where applicable or investigation of cable replacement with Aerial Bundled Cable or undergrounding, or other options as set out in The Electricity Safety (Electric Line Clearance) Regulations 2020

The decision will be based upon costing of the options in terms of tree value, works cost and the surrounding environment of the tree.

These decisions will be made by the Team Leader – Open Space and Trees in consultation with relevant Council officers and/or other authorities, taking into consideration the availability of funds for replacement works based on a clear cost-benefit analysis. These decisions rest with the owner of the asset and not the MPS.

Method of Clearing

The CAMS Tree Management Contractor will be required to assess each span and the vegetation within that span before work has started and address any problems encountered (eg: future removal or safety considerations associated with defective tree structure). The work consists of clearing trees that are the responsibility of the Shire only, from overhead distribution lines (66kV, 22kV and 240V) to the standard required by the Electricity Safety (Electric Line Clearance) Regulations 2020.

Where trees are identified with potentially defective tree structure that could result in failure onto the power line an inspection by a suitably qualified arborist will be undertaken with reference to the MPS Risk Prioritisation Tool (Appendix G). Trees that are found to be an immediate risk of failure will be removed within 24 hours where possible.

Sections of MPS are sensitive areas with respect to the preservation of trees and any interference to them. Consequently, it is vital that the concerns of the residents of these areas be met by the

CONTROLLED COPY NO.:
Revision Number: 1
Issue Date: 28 February 2025

Approved by:
Name: Mark Stoemer
Position: Chief Executive Officer

CAMS Tree Management Contractor whilst satisfying the requirements of the regulations with respect to the power line clearance.

In keeping with the sensitivity of the area, all pruning is to be undertaken in such a way that the impact on the streetscape/environment is minimal. Special consideration shall be applied to significant trees, vegetation of aesthetic significance or the habitat of fauna species.

All tree clearing personnel must have successfully completed Certificate II in ESI Powerline Vegetation Control (UET20321).

Live Line clearing, shutdowns & powerline suppressions.

The MPS's first option is to avoid any need to de-energise powerlines by maintaining the necessary clearances from conductors as per this plan.

If this is not possible then the procedure to conduct these works is as follows:

- The use of suitably approved Live Line crews through the No Go Zone (<https://www.unitedenergy.com.au/safety/no-go-zones/>), sub-contracted by CAMS Tree Management Contractor Ventia shall be the first option.
- Where Ventia considers that power lines or service wires should be de-energised to facilitate tree trimming work, Ventia shall arrange with the power distribution company the disconnection and earthing of power lines referred to as a SHUTDOWN.
- If power lines are to be de-energised, trimming work shall be carried out expeditiously to minimise inconvenience to any affected parties or power recipients.

Urgent pruning/clearing.

Where a clearance issue demands an immediate response, these are usually actioned within 24 hours provided Safe Approach Distances (SAD) clearances can be maintained for Other Responsible Persons (ORPs). To ensure and facilitate an urgent response Ventia must have access to UE assets. Ventia cannot be responsible for the delay of attending Immediate and Urgent response clearances if this access is not forthcoming.

The Distribution Business (UE) or their authorised Service Providers, from time to time, will advise the MPS where vegetation in declared urban areas have threatened to or have disrupted supply. These requests are treated in accordance with the priority assigned as part of the subsequent inspection and are actioned in accordance with the approved program.

Notified work required.

Locations notified by the DB or any other interested party as requiring attention to maintain powerline clearance which are the responsibility of the Shire will be assessed by the CAMS Tree Management Contractor and team and any works identified will then be programmed.

CONTROLLED COPY NO.:
Revision Number: 1
Issue Date: 28 February 2025

Approved by:
Name: Mark Stoemer
Position: Chief Executive Officer

Emergency Clearing

The Team Leader – Open Space and Trees will convey to the CAMS Tree Management Contractor the site of any pruning notified by UE or their Service Provider(s) as being the result of emergency clearing. Work to remove the pruning will then be programmed.

Monitoring of Clearance Spaces

Verification of the effectiveness of procedures aimed at maintaining compliance and meeting the management plans objectives will be assessed through the auditing and inspection programs of Powerlines within the Declared Urban area undertaken by Ventia internal quality and safety audits (Appendix H) and MPS Auditors (Appendix H and Appendix J).

The MPS Auditor will check compliance against this document and the Electricity Safety (Electric Lines Clearance) Regulations 2020 in accordance with the Contract Audit Calendar at a frequency determined by the MPS. Any non-compliance will be rectified, and any continued non-compliance shall be considered a non-conformance and dealt with under the provisions of CN 2640 CAMS Tree Management Contract document.

In addition, the CAMS Tree Management Contractor will carry out spot audits and checks of the procedures and processes adopted by their employees engaged in Lines Clearance operations.

The Power Company at times provides Reliability Audits to Shire advising them of specific locations along feeders where urgent pruning may be required. This, in conjunction with Shire's Technology One System will be used for community notification of observed potential non-compliance, and the quality audits undertaken by both Shire and Ventia ensure that MPS remains informed regarding the extent of vegetation encroachment to Lines under its control and the efficacy of the procedures within this plan to meet its objectives.

Authorised council officers will publish updated and approved plans on the MPS website, ensure superseded versions are removed and ensuring current versions of all regulations, codes and standards are being applied.

Part 2 – 9(4)(j)(ii) Specify the method for determining an additional distance that allows for cable sway for the purposes of determining a minimum clearance space in accordance with of Part 3 Division 1 of the code.

Method of determining clearance

(A) Method of determining clearance

Span distances are determined as part of the inspection of Electrical Lines by Inspectors. GIS data that forms part of the Electrical Lines Clearance Inspection tool indicates pole locations. This information, in conjunction with aerial photographs, is used to plot the length of each span in the MPS's declared area. The length of the span is calculated from this spatial data. Span location in relation to the road envelope can be manually realigned to cater for GPS creep.

CONTROLLED COPY NO.:
Revision Number: 1
Issue Date: 28 February 2025

Approved by:
Name: Mark Stoemer
Position: Chief Executive Officer

Inspectors use this spatial data to identify span length during their inspections and determine compliance for clearance, including cable sway and sag, based on the graphs from the code as referenced in 9(4)(j)(i) and measurements taken with a laser rangefinder. Consultation with the DB by phone and email will take place to determine sag and sway for any spans >100m in the LBRA and >45m in the HBRA.

The relevant contact details for the DB for the MPS are:

Jason Craig
Vegetation Stakeholder and Improvement Lead
CitiPower, Powercorp & United Energy
T: (03) 8846 9709
M: (0) 402 386 940

United Energy Faults Dispatch
132 099

Suppression and Shutdowns
T: (03) 8846 1212

MPS will communicate regularly with UE and their agents to achieve compliance of electric lines within the Declared Areas on the Mornington Peninsula. The communication will include regular phone and email contact as well as meetings if requested by either party to discuss all matters relating to vegetation and compliance with the Electricity Safety (Electric Line Clearance) Regulations 2020. The aim of open communication between Shire and UE is to identify any issues so that they can be resolved in a timely manner and at times seek recommendations or assistance with sag and sway data for spans.

Once works are programmed, a maintenance work sheet is created for each span and given to the work team (Paper or Digital). The maintenance sheet includes the length of span and work teams use the graphs from the code as referenced in 9(4)(j)(i) to determine the amount of cutback / removal required.

Details are stored in the MPS Technology One database for a period exceeding 5 years.

(B) Different additional distances for different parts of an electrical line span

Spans will be cleared to the applicable distance for the middle 2 thirds, as calculated in Electricity Safety (Electric Line Clearance) Regulations 2020 - Schedule 2 Graphs 1-6, regardless of where on the span the vegetation is located. There will be no calculations for additional distances for different parts of the span.

CONTROLLED COPY NO.:
Revision Number: 1
Issue Date: 28 February 2025

Approved by:
Name: Mark Stoemer
Position: Chief Executive Officer

Part 2 – 9(4)(k) The procedure to be adopted if it is not practicable to comply with the requirements of AS4373-2007 while cutting a tree in accordance with the code.

To comply with and AS 4373-2007 Pruning of Amenity Trees, clause 7.3.6 Line clearance, reduction pruning (clause 7.3.2) is undertaken. This necessitates that a “lateral branch to which the final cut is made should be at least one third of the diameter of the branch being reduced at the point of the final cut.” It is noted that “This may be difficult to achieve in line clearance work”. The definition for what is not practicable must refer to this clause and for the purposes of this plan has been interpreted as being:

- Where the final cut is made on a branch less than one third of the diameter of the branch being reduced.
- Where the amount to be removed will impact on the health, structure, and amenity of the tree.

All ELC work crew members shall hold Cert II in ESI Powerline Vegetation Control (UET20321). Copies of all relevant regulations, codes of practice and standards shall also be available for team members to access. Work crews and inspectors are also informed of interpretations to AS 4373-2007 Pruning of Amenity Trees and the definition of ‘not practicable’ as it relates to lines clearance. Updates of all regulations and codes are provided through regular training as determined by internal contractor skills training matrix (example Appendix K) and toolbox meetings.

During the inspection process plant, equipment and clearing techniques required to maintain the clearance zone with respect to AS 4373-2007 Pruning of Amenity Trees are noted. This will include the appropriate tower size, or climber where necessary for access, or if the span requires Live Line/Suppression. These are selected based on the SAD for non-Electrical workers for vegetation and plant, the clearance zone as determined by the code and the vegetation type.

Where clearance cuts are required, and it has been determined by work crew that it is not reasonably practicable to comply with the requirements of AS 4373-2007 Pruning of Amenity Trees for an individual tree, a suitably qualified arborist will be notified and will advise on the pruning technique to be undertaken. If it is determined that to maintain compliance to the code, pruning cannot be undertaken in accordance with AS 4373-2007 Pruning of Amenity Trees and with reference to 9(4)(h), consultation will take place with Council to determine alternative solutions as outlined in 9(4)(j)(i) ‘Method of maintain clearance space and reducing regrowth’, and may involve:

- Increased pruning frequency, based on significance of the vegetation.
- Exceptions under Part 2 Div. 1 (4), (5), (6) & (7) of the Code of Practice.
- Requests for alternative engineering solutions.
- Removal and replacement with more suitable species.

Refer to Part 2- (9)(4)(j)(I) Monitoring of Clearance Spaces

CONTROLLED COPY NO.:
Revision Number: 1
Issue Date: 28 February 2025

Approved by:
Name: Mark Stoemer
Position: Chief Executive Officer

Refer to Part 2- (9)(4)(j)(l) Notification of Tree Pruning to be Carried Out.

Part 2 – 9(4)(l)

n/a Covered in schedules 31 & 32 of Code.

Part 2 – 9(4)(m)

n/a Covered in schedules 31 & 32 of Code.

Part 2 – 9(3)(n) A description of the measures that must be used to assess the performance of the responsible person under the management plan.

Performance shall be evaluated in accordance with provisions under CN2640 CAMS Tree Management Services Contract This will include regular audits as outlined in 9(4)(j)(i) 'Monitoring of clearance spaces', as well as monthly and yearly reviews conducted by council on reported inspections and works completed by Ventia.

Reporting is collated from the asset management database maintained by MPS. This captures all inspection records for individual spans and works records for cleared spans.

Customer service response times are managed through the MPS Technology One system and are subject to auditing by the Shire.

In accordance with the contract the MPS will carry out condition audits to ensure that all requirements outlined in this Electrical Line Clearance Management Plan are being met and any non-conformity with the Electricity Safety (Electric Line Clearance) Regulations 2020. and AS 4373-2007 Pruning of Amenity Trees is identified.

The MPS has resolved to meet with UE and/or their service providers to discuss progress and address any areas of concern.

The following sets out the matters that may be discussed at these meetings.

- The number of trees in breach of the Electricity Safety (Electric Line Clearance) Regulations 2020 as identified by Audits conducted by UE and/or their service provider.
- The number of pruning cuts found to be below standard,
- The number of customer requests for pruning,
- The number of requests from UE for pruning,
- The number of customer complaints,
- The number of alternative approaches to normal pruning adopted:
 - Reduced pruning cycle.
 - Removal /Replacement
 - Aerial Bundled Cable
 - Electrical Lines re-routed.
 - Electrical Lines put underground.
 - Other engineering solutions adopted.

CONTROLLED COPY NO.:
Revision Number: 1
Issue Date: 28 February 2025

Approved by:
Name: Mark Stoemer
Position: Chief Executive Officer

Where audits have found non-compliance of performance standards by the Contractor, Penalties may be applied as per CAMS contract Specifications.

Part 2 – 9(4)(o) Details of the Audit processes that must be used to determine the responsible persons compliance with the code.

The CAMS Tree Management Contractor shall carry out quality audits for code compliance monthly, which includes inspection of 3 spans from the previous month and 10% of the total spans cut in the previous month – refer to (Appendix H) for a copy of the schedule of minimum requirements and template for monthly quality audits. Audit results are recorded in the Ventia Incident Management System (VenSafe).

Work crews are also subject to random audits through the year on Critical Control Checks which include Manual handling, Working Near Traffic, Working at Height, Working Near Live Services, Working around and operating mobile plant.

The MPS perform biannual audits targeted at the activity level to ensure compliance with the code (refer to 9(4)(j)(i) 'Monitoring of Clearance Spaces'). Refer to (Appendix I) for process for the recording and management of audits conducted by MPS and processes for any non-compliance identified by the audit.

Part 2 – 9(4)(p) The qualifications and experience that the responsible person must require of the persons who are to carry out the inspections, cutting or removal of trees in accordance with the Code.

All sub-contractors and members of the CAMS Tree Management Contractor that are engaged in the inspection, cutting or removal of trees as part of the Electrical Lines Clearance activity will be required to hold UET20321 – Certificate II in ESI – Powerline Vegetation Control. Annual refresher training will be required as a minimum with additional units as follows.

Works Teams

Cutter working from EWP/Safety Observer

- HLTAID009 Provide cardiopulmonary resuscitation.
- UETDRRF007 Provide first aid in an ESI environment.
- UETDRRF08 Perform EWP controlled descent escape.
- UETDRRF03 Perform EWP rescue.
- Safe Approach Distances - Vegetation Work (Victorian Based)

In addition, personal involved with Electrical Lines Clearance activity require the following certification.

CONTROLLED COPY NO.:
Revision Number: 1
Issue Date: 28 February 2025

Approved by:
Name: Mark Stoemer
Position: Chief Executive Officer

- TLILIC0005 Licence to operate a boom-type elevating work platform (boom length 11 metres or more)

Tree Climber/Safety observer.

- UETDREL002 Comply with environmental requirements.
- UETDREL006 Work safely in the vicinity of live electrical apparatus as a non-electrical worker.
- UETDRVC001 Apply work health and safety requirements for powerline vegetation control.
- UETDRVC006 Control vegetation in the vicinity of live electrical apparatus from within the tree
- UETDRVC007 Control vegetation using pruning techniques.
- UETDRVC009 Monitor vegetation control work in the vicinity of live electrical apparatus.

All sub-contractors and members of the CAMS Tree Management Contractor team that complete the appropriate training “UET20321 – Certificate II in ESI – Powerline Vegetation Control” will require Team Leader – Open Space and Trees approval prior to commencing any inspection, cutting or removal of trees as part of Electrical Lines Clearance activity.

Including, but not limited too-

- Cutter working from EWP/Safety Observer
- Tree Climber/Safety Observer
- Specialist Plant Operator/Safety Observer
- Power Line Clearing Inspector

The CAMS Tree Management Contractor must ensure that all Sub-Contractors and Employees engaged in completing Electrical Lines Clearance Inspections hold current training qualifications required under the Electricity Safety (Electric Line Clearance) Regulations 2020. A record of the sighting of these documents shall be kept by the MPS Open Space and Trees Team and shall be updated as training sessions are completed.

Lines Inspectors / Inspection Arborists

As a minimum, a Certificate II in ESI Powerline Vegetation Control (UET20321) with unit UETDRVC24A – Assess vegetation and recommend control measures in an ESI environment must be held by all persons involved in inspecting of spans for vegetation clearance. In addition, all Powerline Inspecting Arborists, as suitably qualified Arborists, shall have as a minimum, Certificate III in Arboriculture including the “Perform a ground-based tree defect evaluation” unit with and at least 3 years of field experience in assessing powerline clearance. All Arboricultural Inspecting Arborists engaged by Ventia shall hold an equivalent qualification of Cert IV or above with a minimum of 3 years’ experience in assessing trees.

CONTROLLED COPY NO.:
Revision Number: 1
Issue Date: 28 February 2025

Approved by:
Name: Mark Stoemer
Position: Chief Executive Officer

General

All persons utilised in Lines Clearance works shall comply with “Electrical Safety Rules for Vegetation Management Work Near Overhead Powerlines by Non-Electrical Workers” (1 September 2013) “*Vegetation management worker*”.

The Team Leader – Open Space and Trees shall oversee CAMS Tree Management Contractor and subcontractors’ operations on the ground, including the clearance of vegetation encroachment and inspections of the vegetation and clearances from the electrical assets.

The MPS Team Leader – Open Space and Trees in conjunction with the CAMS Arboriculture Manager must ensure that all trees are pruned according to AS 4373-2007 Pruning of Amenity Trees as a minimum standard and that all works comply with the Electrical Safety (Electric Lines Clearance) Regulations 2020.

Training and Authorisation

Training and authorisation requirements and actions are applied to ensure the maintenance of competency skills are maintained.

All certificates are securely filed for each employee by Ventia. Future training requirements of all staff is managed by a Ventia’s Training Matrix (Vensafe) (Appendix K), which details when refresher training is due for each employee. The term Arboriculture Team Leader, 2IC and Labourer in the training matrix includes all ELC workers and is in line with the Ventia Enterprise Agreement. Any subcontractor or employee who does not hold a current UET20321 – Certificate II in ESI – Powerline Vegetation Control certificate is not permitted to work within the Electrical Lines clearance activity.

If personnel are found on site without appropriate training Ventia ‘Stop Work’ protocols will be implemented. These are:

1. Stop work to immediate effect.
2. Stand down and contact Manager.
3. Implement IMS incident investigation and hazard identification system.
4. Implement changes as identified through IMS investigation.

Part 2 – 9(4)(q) Notification and consultation Procedures

This Part is covered in schedules 16, 17, 18 & 19 of the Regulations in accordance with the guidance notes. Additional coverage is in Part 9(4)(j)(i) ‘Notification of Tree Pruning to be Carried Out and the following section 9(4)(r) of this document.

CONTROLLED COPY NO.:
Revision Number: 1
Issue Date: 28 February 2025

Approved by:
Name: Mark Stoemer
Position: Chief Executive Officer

Part 2 – 9(4)(r) Dispute Resolution Procedures.

Initial enquiries to the MPS are generally through the Shires Customer Service. There are various methods of contacting Customer Service, as outlined on the Shire website, <http://www.mornpen.vic.gov.au/Contact-Us>.

The MPS Complaints Handling Policy consists of 4 levels:

1. Frontline Complaint Handling by Customer Service and frontline staff to register complaint and resolution/action taken.
2. Internal Review – Operational manager or Director to resolve complaint by investigation.
3. Internal Review by the Manager Governance and Corporate Support in the role of Internal Investigations Officer of unresolved complaints.
4. External Review of unresolved complaints may take the form of:
 - a. Complaint referred to external agency, e.g. IBAC; or
 - b. Complainant informed of appeal procedure or other legal remedy.
 - c. Alternative methods of dispute resolution may also be considered.

A flow chart of the Disputes Resolution process is in Appendix E. The Complaints Handling Policy can be found on the MPS Website at

<https://www.mornpen.vic.gov.au/About-Us/Strategies-Plans-Policies/Policy-listing>

The resolution of disputes between the Victoria Electrical Authorities and their customers and providers will be referred to the Energy and Water Ombudsman at <http://www.ewov.com.au/>.

Authorised council representatives will ensure that a copy of the management plan will be available for inspection at Shire Offices. These can be located through the shire website contact page as above. The ELCMP is also available on the Shire website at

<https://www.mornpen.vic.gov.au/Online-Forms-and-Services/Trees-Vegetation>

Corrective Requirements (following dispute resolution)

Where remedial action can be satisfactorily carried out by The CAMS Tree Management Contractor, this work shall be completed as soon as possible.

Where assistance is required by other such as the Distribution Company, then the consultation shall be used to assist in attending to the non-compliance as soon as possible.

CONTROLLED COPY NO.:
Revision Number: 1
Issue Date: 28 February 2025

Approved by:
Name: Mark Stoemer
Position: Chief Executive Officer

Following investigation of the non-compliance and the establishment of the cause, the importance of compliance with the Management Plan and Electricity Safety (Electric Line Clearance) Regulations 2020 will be drawn to the attention of the persons concerned:

Part 2 – 9(4)(s) ESV granted exemption under regulation 11.

MPS has not applied to ESV for any exemptions under regulation 11.

Part 2 – 10(6) A responsible person must ensure that a copy of the management plan is published on the responsible person internet site.

The MPS Open Space and Trees team shall provide a copy of the new Electric Line Clearing Management Plan (ELCMP) for inclusion on the website for the financial year to uploading on 01 July. Each year the new ELCMP replaces the previous plan. Following upload, the MPS Open Space and Trees team check the website to confirm access to current plan. The ELCMP can be accessed via the following link(s):

<https://www.mornpen.vic.gov.au/Online-Forms-and-Services/Trees-Vegetation>

Part 2 – 11(2)(a) A responsible person who is granted an exemption must comply with the conditions of the exemption.

The MPS have not applied for any exemptions under Part 2 – 11(2)(a) of the Electrical Safety (Electric Line Clearance) regulations 2020 for the 2025-2026 financial year.

SCHEDULE 1- PART 2 - DIVISION 1

Part 4 Exception to minimum clearance space for structural branches around insulated low voltage electric lines.

The MPS has applied an exception under the Code of Practice, Part 2 Div 1 (4) of the Electrical Safety (Electric Line Clearance) regulations 2020 for the 2025-2026 financial year to Six (6) trees. The impacted spans are.

- LIS 1106708 – 1106707
 - 12 Ferguson Dve Balnarring beach
 - Tree ID – ST014864
- LIS 1106674 – 1106675
 - 7 Sidney St Balnarring Beach
 - Tree ID – ST033248
- LIS 1107816 – 1107815
 - 6 Johnson St Balnarring
 - Tree ID – ST015268

CONTROLLED COPY NO.:
Revision Number: 1
Issue Date: 28 February 2025

Approved by:
Name: Mark Stoemer
Position: Chief Executive Officer

- LIS 1318894 – 1318893
 - 13 Hiskens St Sorrento
 - Tree ID – ST037383
- LIS 1316057 – 1316058
 - 15 Overlea Ave Rosebud
 - Tree ID – ST038883
- LIS 1315442 – 1316059
 - 27 Overlea Ave Rosebud
 - Tree ID – ST031916

Exceptions applied by MPS for trees identified as significant, as per 9(4)(h)(i), (ii) and (iii), where:

- Structural branches are >130mm diameter at the point of entry to the clearance space and continue into the minimum clearance space,
- The lines are insulated low voltage,
- The span is $\geq 40\text{m}$
- The branch is >150mm from the line.

Exceptions are identified by a suitably qualified arborist and referred for approval through the MPS Team Leader – Open Space and Trees.

The record for the affected span, as well as a separate record for the individual tree, shall be updated in the MPS Technology One database, noted in 9(4)(j)(i) (Appendix L and M). The size of the branch, distance from insulated LV lines and exception applied for shall be included in these records. An annual inspection program for the span and the tree shall be implemented and completed between November 1 and November 30. The inspection of the tree shall be conducted by a suitably qualified arborist. The tree and the structural branch within the clearance space will be assessed by the arborist for structural defects that may cause the branch to fail and come into contact with the electric line. The span will also be assessed using methods described in 9(4)(j)(i).

If the assessment by the suitably qualified arborist indicates that there is a structural defect with the tree or branch that could cause it to fail and come into contact with the Conductor, management options shall be investigated by the CAMS Tree Management Contractor. If it is determined that the tree or branch cannot be retained the removal of the tree or branch will be scheduled.

Records in the MPS Technology One database are held for a minimum of 5 years.

Audits of spans to which exceptions apply will be conducted as per 9(4) (ij)(i) and 9(4)(o).

CONTROLLED COPY NO.:
Revision Number: 1
Issue Date: 28 February 2025

Approved by:
Name: Mark Stoemer
Position: Chief Executive Officer

Part 5 Exception to minimum clearance space for small branches around insulated low voltage electric lines.

The MPS has not applied for any exceptions under the Code of Practice, Part 2 Div 1 (5) of the Electrical Safety (Electric Line Clearance) regulations 2020 for the 2025-2026 financial year.

Part 6 Exception to minimum clearance space for small branches around uninsulated low voltage electric lines in low bushfire risk areas.

The MPS has not applied for any exceptions under the Code of Practice, Part 2 Div 1 (5) of the Electrical Safety (Electric Line Clearance) regulations 2020 for the 2025-2026 financial year.

Part 7 Exception to minimum clearance space for structural branches around uninsulated low voltage electric lines in low bushfire risk areas.

The MPS has applied exceptions under the Code of Practice, Part 2 Div 1 (7) of the Electrical Safety (Electric Line Clearance) regulations 2020 for the 2025-2026 financial year to Seven (7) trees. The impacted spans are.

- LIS 11008105 – 11008106
 - 16 Gerald St Tyabb
 - Tree ID – ST033342

- LIS 1110425 - 1110424
 - 1 Sefton Crt Hastings
 - Tree ID – ST036876

- LIS 1110426 -1110427
 - 33 Villawood Dve
 - Tree ID – ST031987

- LIS 11010448 -11010449
 - 3 Wingala Crt Hastings
 - Tree ID – ST036380

- LIS 1107814 -1107815
 - 2 Johnson St Balnarring
 - Tree ID – ST037443

- LIS 1107816 – 1107815
 - 8 Johnson St Balnarring
 - Tree ID – 015262

- LIS 1307430 – 1307450
 - 2 Gavin St Portsea
 - Tree ID - 020659

CONTROLLED COPY NO.:
Revision Number: 1
Issue Date: 28 February 2025

Approved by:
Name: Mark Stoemer
Position: Chief Executive Officer

Exceptions applied by MPS for trees identified as significant, as per 9(4)(h)(i), (ii) and (iii), where:

- The electric line is an uninsulated low voltage cable within a LBRA
- One conductor spreader will be present in a span $\leq 45\text{m}$ and two conductor spreaders will be present in a span $>45\text{m}$ if the branch comes within the minimum clearance space in the middle 2 thirds of the span
- Structural branches are $>130\text{mm}$ diameter at the point of entry to the clearance space and continue into the minimum clearance space,
- The branch is no more than 500mm inside the minimum clearance space

Exceptions are identified by suitably qualified arborist and referred for approval through the MPS Parks and Roadsides Contract Coordinator and the Manager of Parks and Roadsides.

The record for the affected span(s) (Appendix L), as well as a separate record for the individual tree(s) (Appendix M), shall be updated in the MPS GIS and database, noted in 9(4)(j)(i). The size of the branch, distance from uninsulated LV lines and exception applied for shall be included in these records. An annual inspection program for the span and the tree shall be implemented and completed between November 1 and November 30. The tree inspection shall be conducted by a suitably qualified arborist. The tree and the structural branch within the clearance space will be assessed for structural defects that may cause the branch to fail and come into contact with the electric line. The span will also be assessed using methods described in 9(4)(j)(i).

If assessment by the suitably qualified arborist indicates that there is a structural defect with the tree or branch that could cause it to fail and come into contact with the conductor, management options shall be investigated by the CAMS Tree Management Contractor. If it is determined that the tree or branch cannot be retained the removal of the tree or branch will be scheduled.

Records in the MPS GIS and database are held for a minimum of 5 years.

Audits of spans to which exceptions apply will be conducted as per 9(4)(j)(i) and 9(4)(o).

Part 8 Owner or Operator of transmission line must manage trees around minimum clearance space.

Not applicable to Councils

Part 9 Responsible person may cut or remove hazard tree.

A hazard tree, defined as a tree where there is:

- the threat from a tree or tree part resulting from changes in the physical condition, growing environment or existing physical attributes of the tree that may/has result/ed in failure of the tree or tree part and will contact electric lines.
- Expectation of regrowth into the clearance space prior to programmed clearance.
- Vegetation within the clearance zone of a span in the HBRA.

CONTROLLED COPY NO.:
Revision Number: 1
Issue Date: 28 February 2025

Approved by:
Name: Mark Stoemer
Position: Chief Executive Officer

If through notification or by routine inspection a tree is identified as a potential hazard according to the definition as hazard tree, assessment of the tree will be undertaken by a suitably qualified arborist as defined by the Code and referenced in 9(4)(p).

The assessment will take into consideration 9(4)(h), 9(4)(i) and 9(4)(j) and other foreseeable local conditions, such as weather. This would include forecast wind and rain events. The tree will be assessed as per 9(4)(j)(i), with reference to the Risk Prioritisation Tool (Appendix G) and entered in the database.

If the tree is assessed by the suitably qualified arborist as being a hazard, clearance will be scheduled as per 9(4)(j)(i) 'Urgent Pruning/Clearing'.

If the tree is assessed as a hazard and there is encroachment of vegetation to a degree where body and vegetation SAD cannot be maintained works will be scheduled as per 9(4)(j)(i) 'Live Line clearing, shutdowns & Powerline suppressions'.

Notification of affected persons will be as per 9(4)(j)(i) 'Notification of Tree Pruning to be Carried Out'. Notification shall also be made to the Team Leader – Open Space as the representative of the Responsible Person.

If the tree is assessed as a habitat tree with fauna present, as defined in 9(4)(h)(ii), and the tree cannot be made safe without affecting said fauna, translocation of the fauna will take place with guidance from appropriately qualified Council, Ventia and/or DEECA employees.

SCHEDULE 1 –PART 2 –DIVISION 2

Part 10 A responsible person cutting a tree to achieve compliance must, as far as practicable, cut the tree in accordance with AS 4373-2007 as published or amended from time to time.

Covered in regulation 9(4)(k)

Part 11 Cutting or removal of indigenous or significant trees must be minimised.

Vegetation identified as being indigenous or significant, as defined in 9(4)(h), shall be assessed by a suitably qualified arborist and the basis for significance noted in the inspection record for the tree and the span. This information will then be visible for subsequent inspections and works that may take place.

Where clearance cuts are required and it is determined that to maintain compliance to the code pruning cannot be undertaken without excessive impact to the structure and form of the significant vegetation, consultation will take place with Council to determine alternative solutions as outlined in 9(4)(j)(i) 'Method of maintain clearance space and reducing regrowth', and may involve:

- Increased pruning frequency, based on significance of the vegetation.

CONTROLLED COPY NO.:
Revision Number: 1
Issue Date: 28 February 2025

Approved by:
Name: Mark Stoemer
Position: Chief Executive Officer

- Exceptions under Part 2 Div 1 (4), (5), (6) & (7) of the Code of Practice.
- Requests for alternative engineering solutions.
- Removal and replacement with more suitable species.

If the significant vegetation has been assessed by a suitably qualified arborist, has been identified as hazardous and cannot be made safe through pruning or by implementing alternative solutions as outlined in 9(4)(j)(i), removal of the vegetation may be required and management of the tree under Part 9 would apply.

Relevant processes are audited for effective implementation as outlined in 9(4)(o).

Part 12 Cutting or removing habitat for threatened fauna.

Covered in regulation 9(4)(h)(ii), 9(4)(i) and Part 9.

Part 13 Restriction on timing of cutting or removal if notification is required.

Covered in 9(4)(j)(i) 'Notification of Tree Pruning to be Carried Out'.

Part 14 Restriction on urgent cutting of trees

Covered in Part 9

Part 15 Restriction on urgent cutting of trees

Covered in Part 9

SCHEDULE 1 –PART 2 –DIVISION 3

Part 16 Responsible person must publish notice before cutting or removing certain trees.

Covered in 9(4)(j)(i) 'Notification of Tree Pruning to be Carried Out'.

Part 17 Responsible person must publish notice before cutting or removing certain trees.

Covered in 9(4)(j)(i) 'Notification of Tree Pruning to be Carried Out'.

Part 19 Notification and record keeping requirements for urgent cutting or removal.

Covered in 9(4)(j)(i)

CONTROLLED COPY NO.:
Revision Number: 1
Issue Date: 28 February 2025

Approved by:
Name: Mark Stoemer
Position: Chief Executive Officer

SCHEDULE 1 –PART 2 –DIVISION 4

Part 20 Duty relating to the safety of cutting or removal of trees close to an electric line.

Covered in 9(4)(j)(i) 'Live Line clearing, shutdowns & Powerline suppressions".

Contact details of the DB for the MPS is covered in 9(4)(j)(ii). There are no other owners or operators of electric line networks within the shire.

Part 21 Duty relating to assisting to determining the allowance for conductor sag and sway.

If assistance is required to determine additional distance to the minimum clearance space in accordance with Division 1 of Part 3 for conductor sag and sway, contact will be made with the DB. Contact details of the DB for the MPS is covered in 9(4)(j)(ii). There are no other owners or operators of electric line networks within the shire.

Records will be maintained for at least 5 years indicating this change as covered in 9(4)(j)(ii).

CONTROLLED COPY NO.:
Revision Number: 1
Issue Date: 28 February 2025

Approved by:
Name: Mark Stoemer
Position: Chief Executive Officer

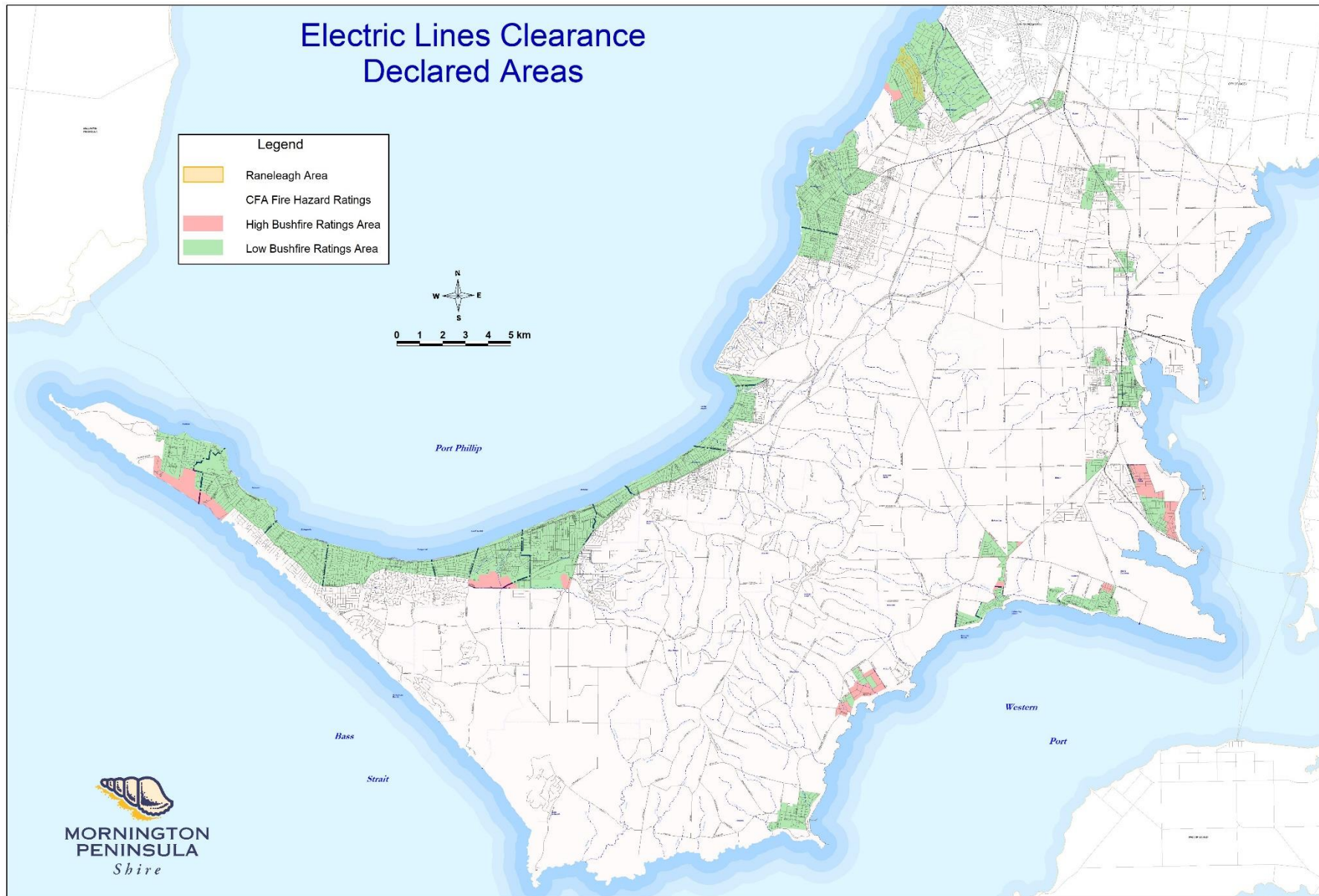
Appendix A

Summary Map(s) - MPS Declared HBRA / LBRA Area – Shire Wide

CONTROLLED COPY NO.:
Revision Number: 1
Issue Date: 28 February 2025

Approved by:
Name: Mark Stoemer
Position: Chief Executive Officer

2025-2026 Electrical Line Clearance Plan – Mornington Peninsula Shire



Declared Areas for Powerline Clearing.gws - 19/12/2022

CFA Bushfire Ratings data updated November 2022
<https://www.cfa.vic.gov.au/plan-prepare/building-planning-regulations/electric-line-vegetation-clearance>

INTERNAL

Appendix B

Summary Map(s) - MPS Declared HBRA / LBRA - Area Maps

CONTROLLED COPY NO.:
Revision Number: 1
Issue Date: 28 February 2025

Approved by:
Name: Mark Stoemer
Position: Chief Executive Officer

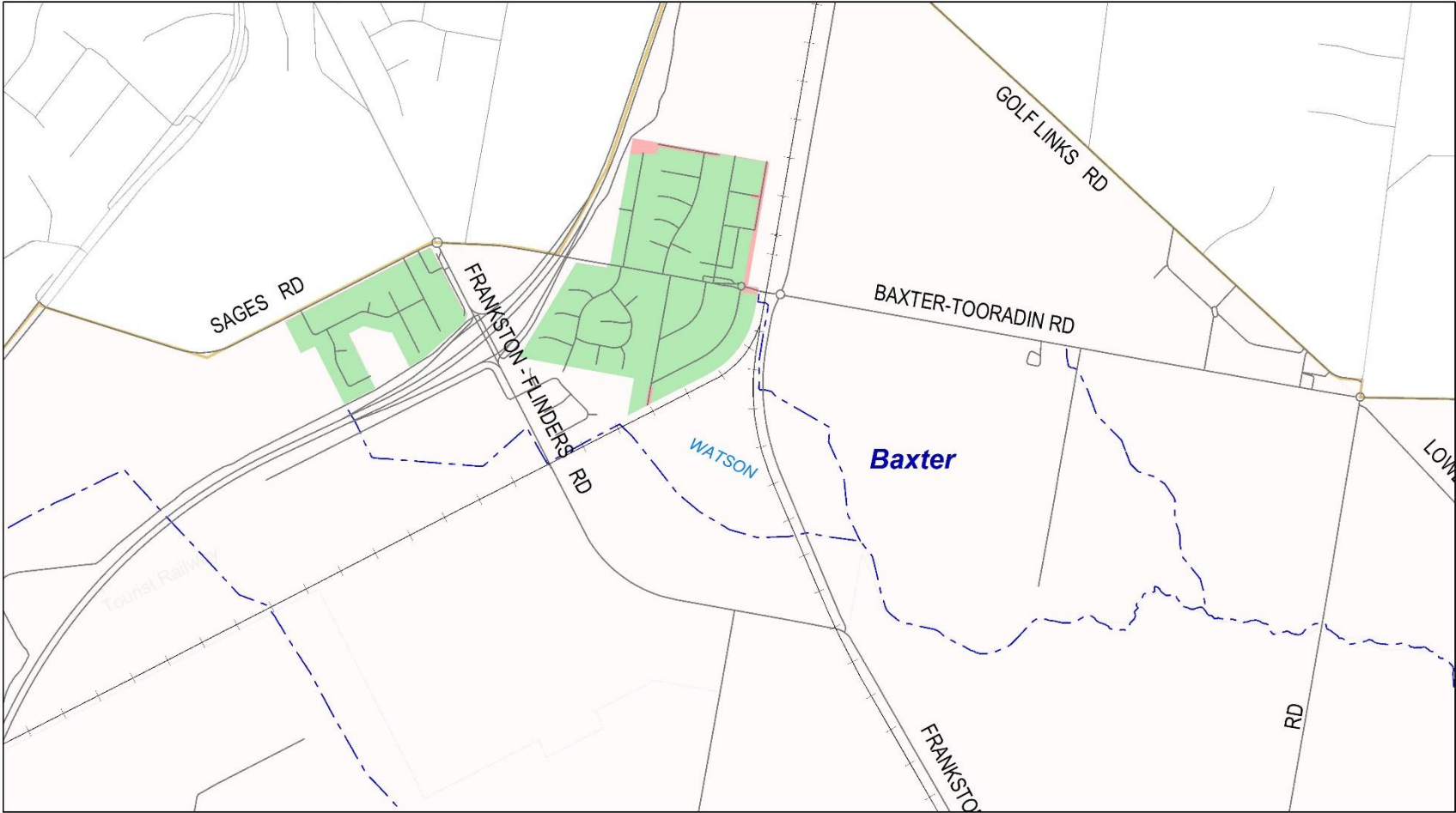
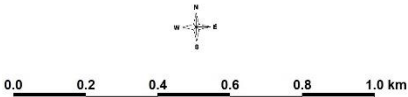
Electric Lines Clearance
Declared Area - Baxter



Legend

CFA Fire Hazard Ratings

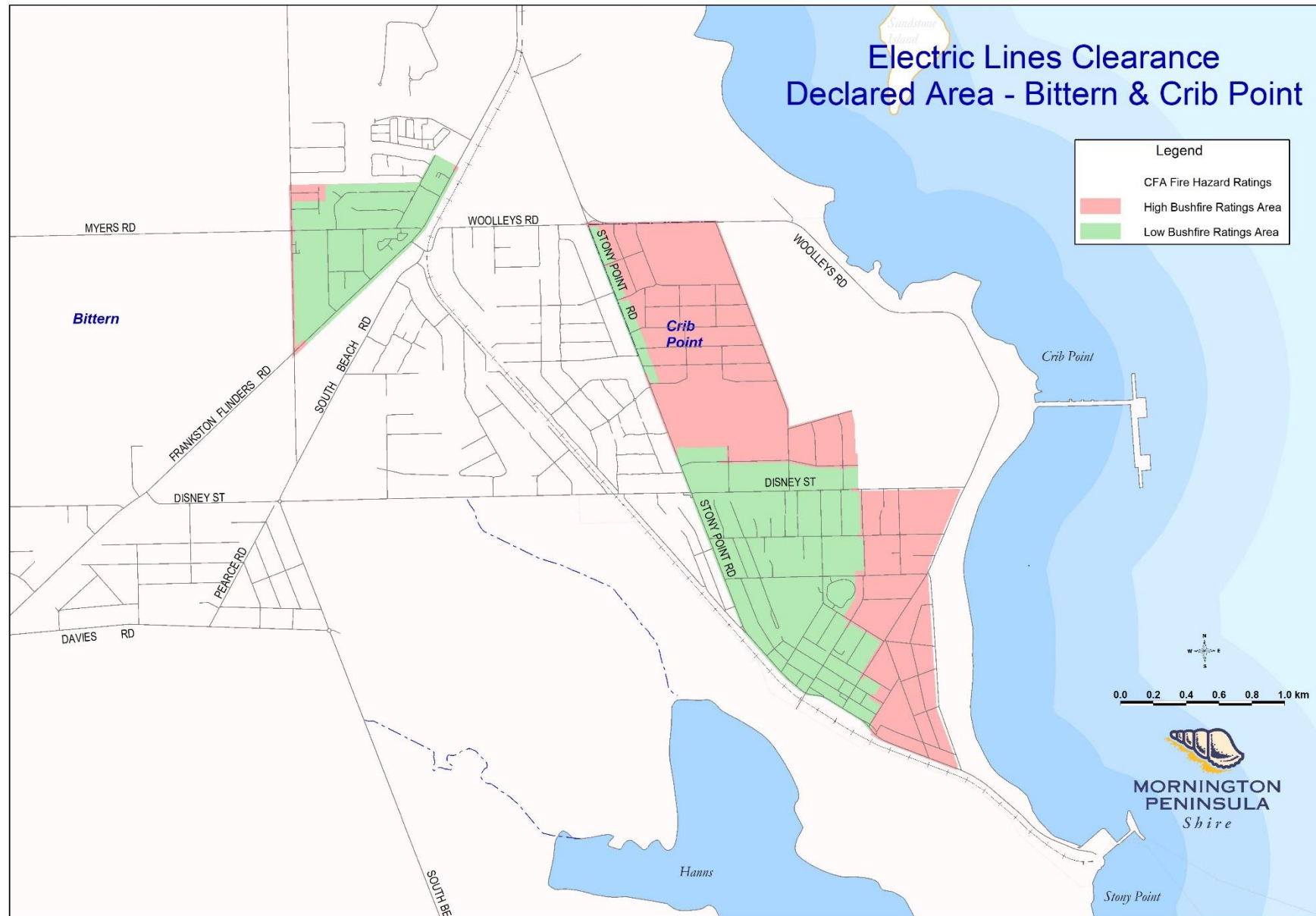
- High Bushfire Ratings Area
- Low Bushfire Ratings Area



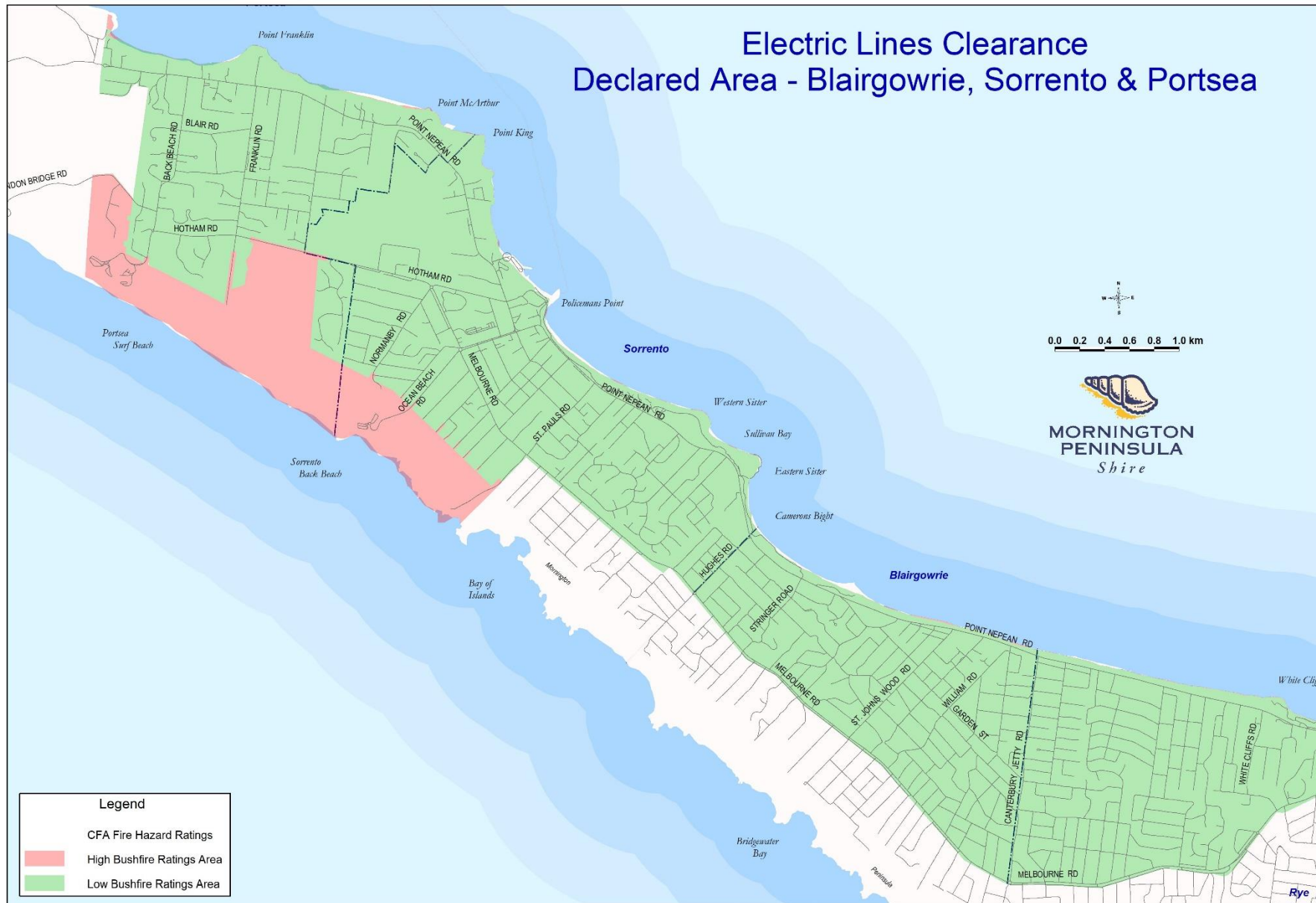
Declared Areas for Powerline Clearing.gws - 19/12/2022

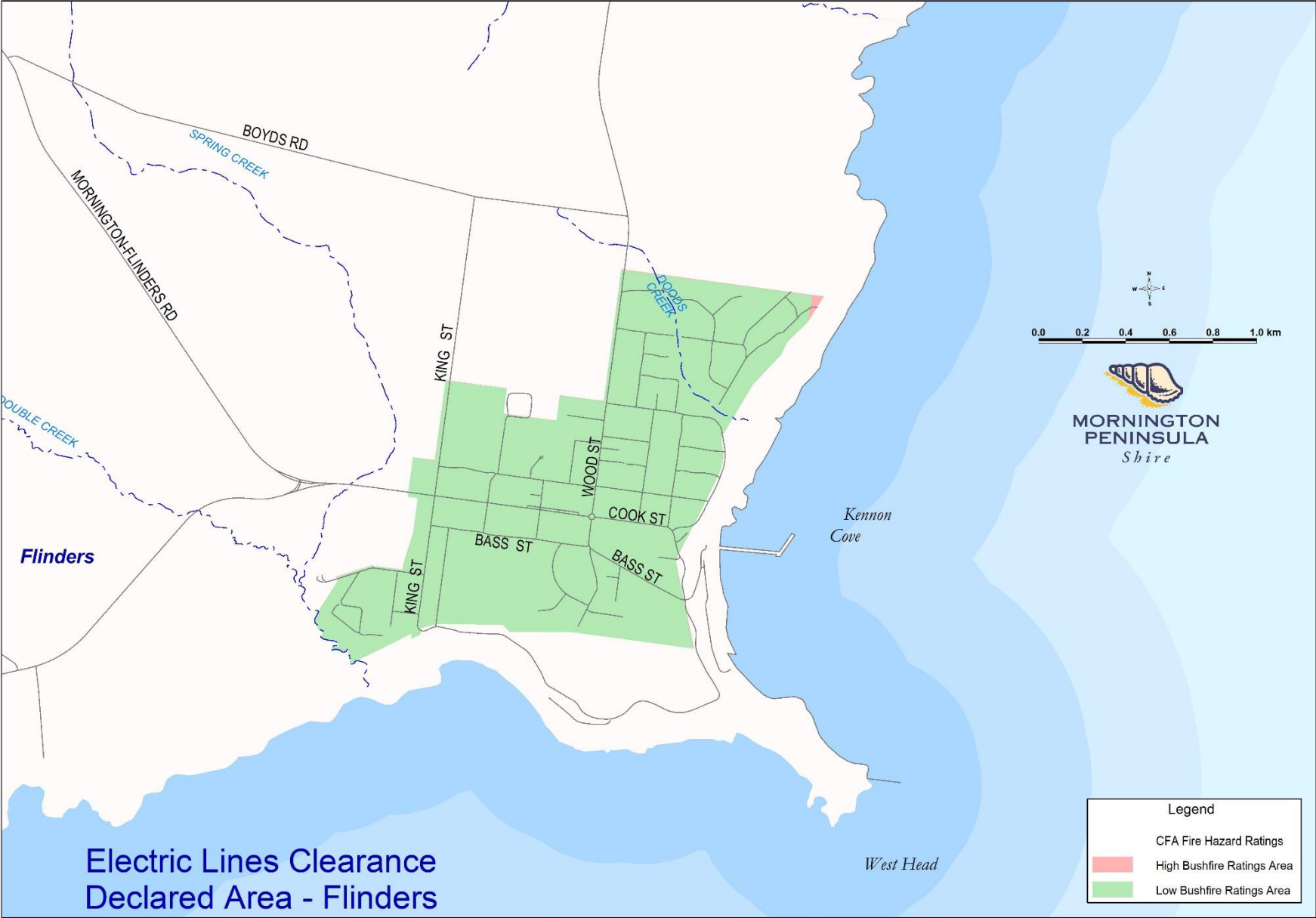
CFA Bushfire Ratings data updated November 2022
<https://www.cfa.vic.gov.au/plan-prepare/building-planning-regulations/electric-line-vegetation-clearance>

2025-2026 Electrical Line Clearance Plan – Mornington Peninsula Shire



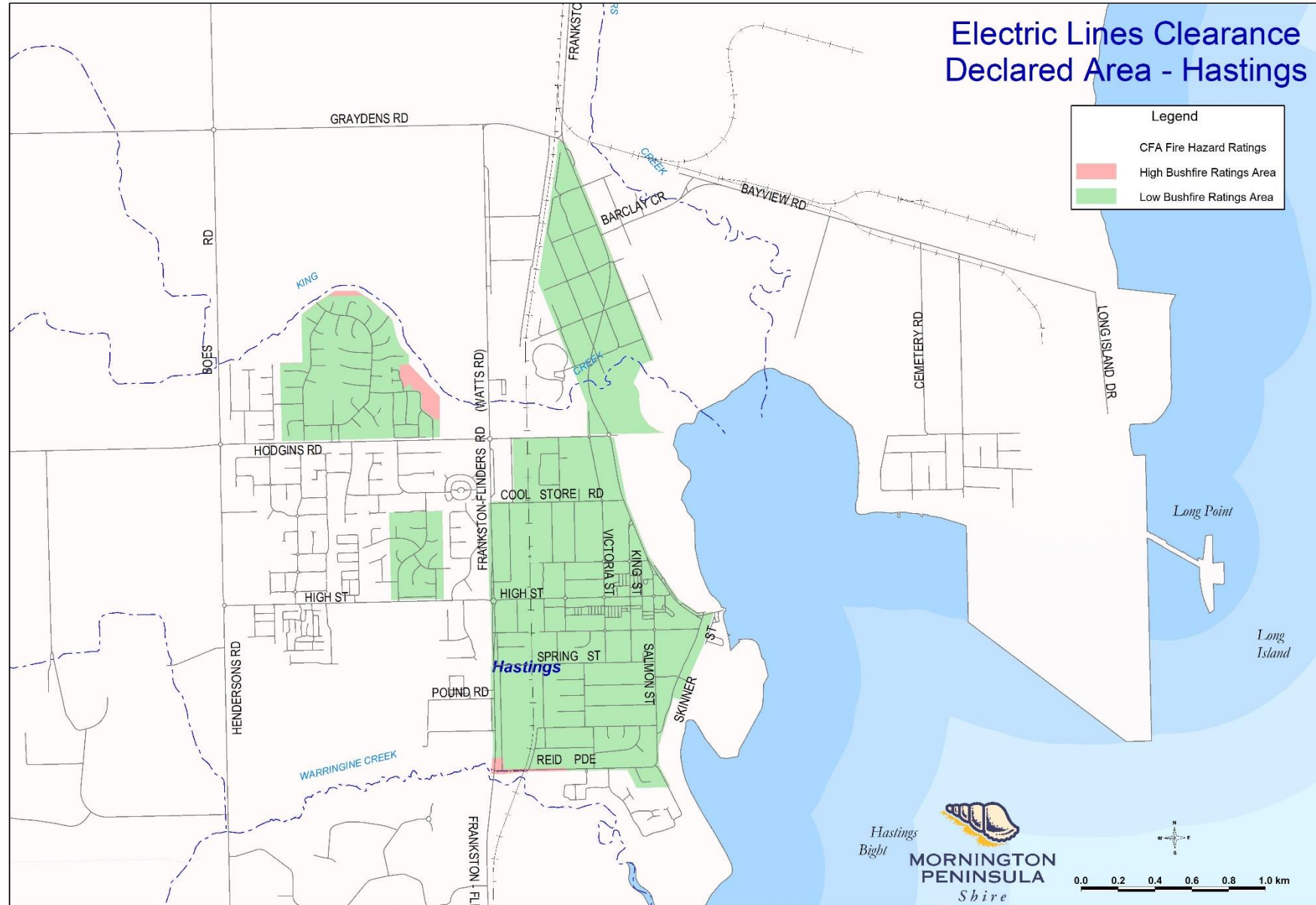
2025-2026 Electrical Line Clearance Plan – Mornington Peninsula Shire



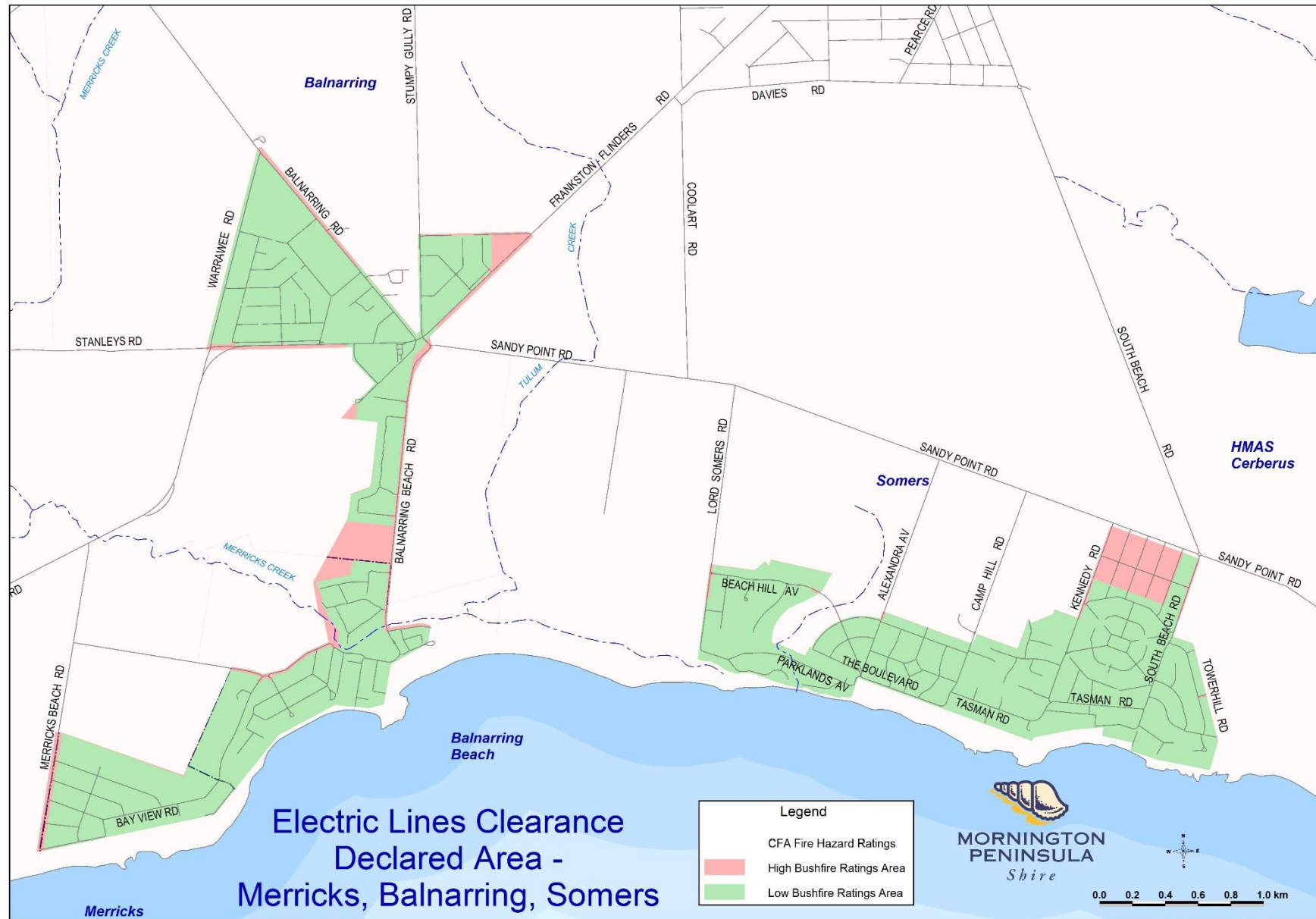


Declared Areas for Powerline Clearing.gws - 19/12/2022

CFA Bushfire Ratings data updated November 2022
<https://www.cfa.vic.gov.au/plan-prepare/building-planning-regulations/electric-line-vegetation-clearance>



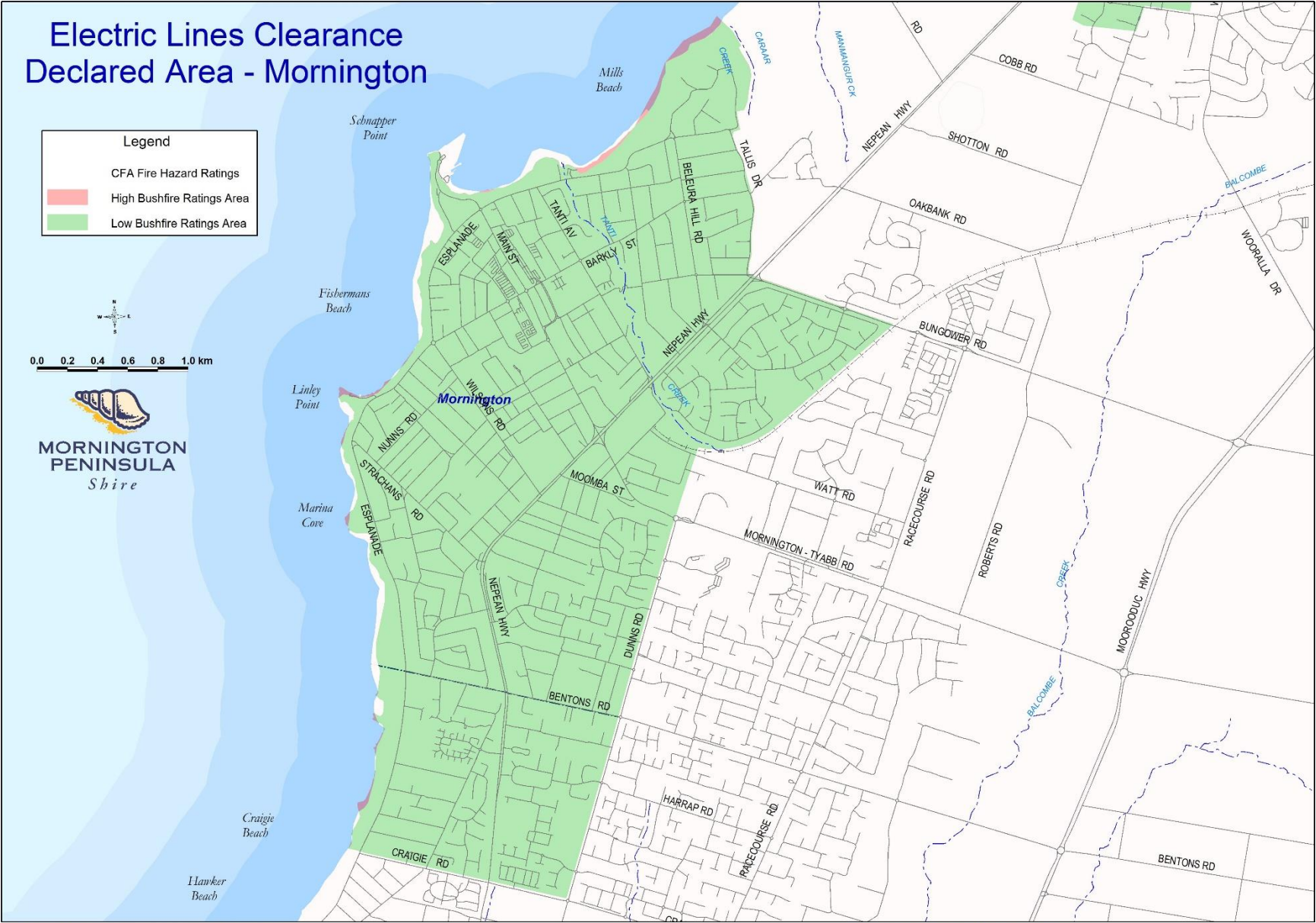
2025-2026 Electrical Line Clearance Plan – Mornington Peninsula Shire



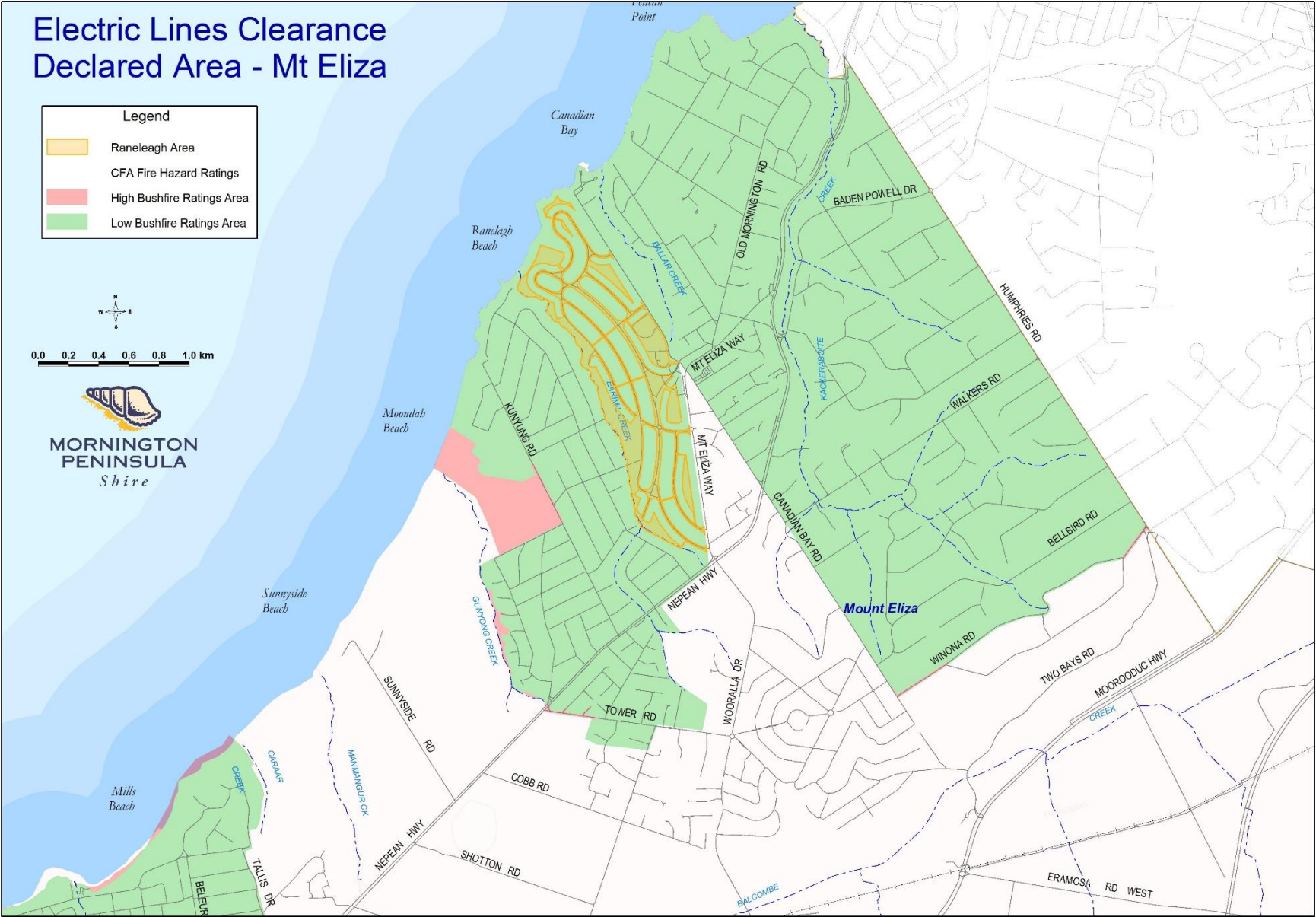
Declared Areas for Powerline Clearing.gws - 19/12/2022

CFA Bushfire Ratings data updated November 2022
<https://www.cfa.vic.gov.au/plan-prepare/building-planning-regulations/electric-line-vegetation-clearance>

INTERNAL

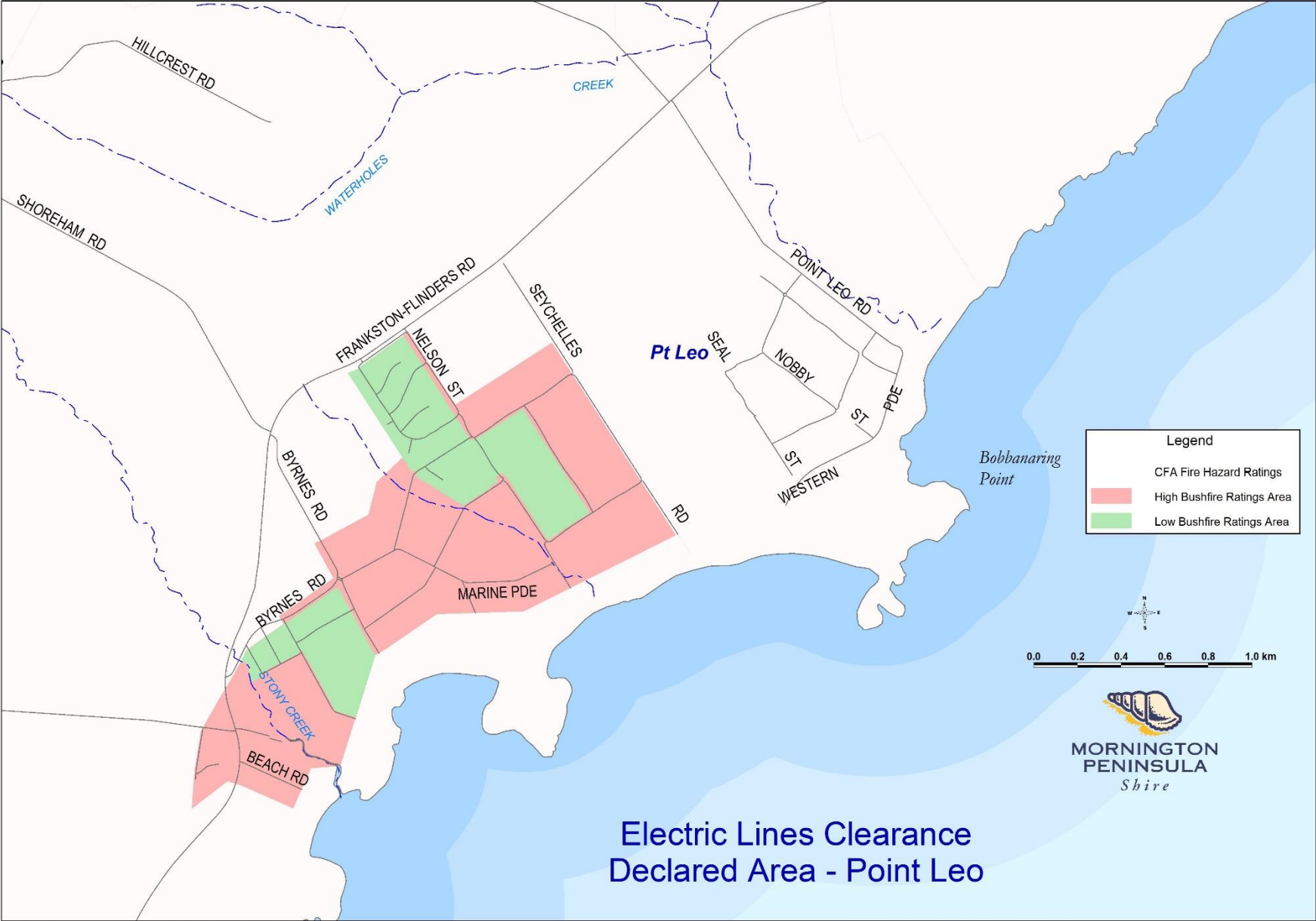


CFA Bushfire Ratings data updated November 2022
<https://www.cfa.vic.gov.au/plan-prepare/building-planning-regulations/electric-line-vegetation-clearance>



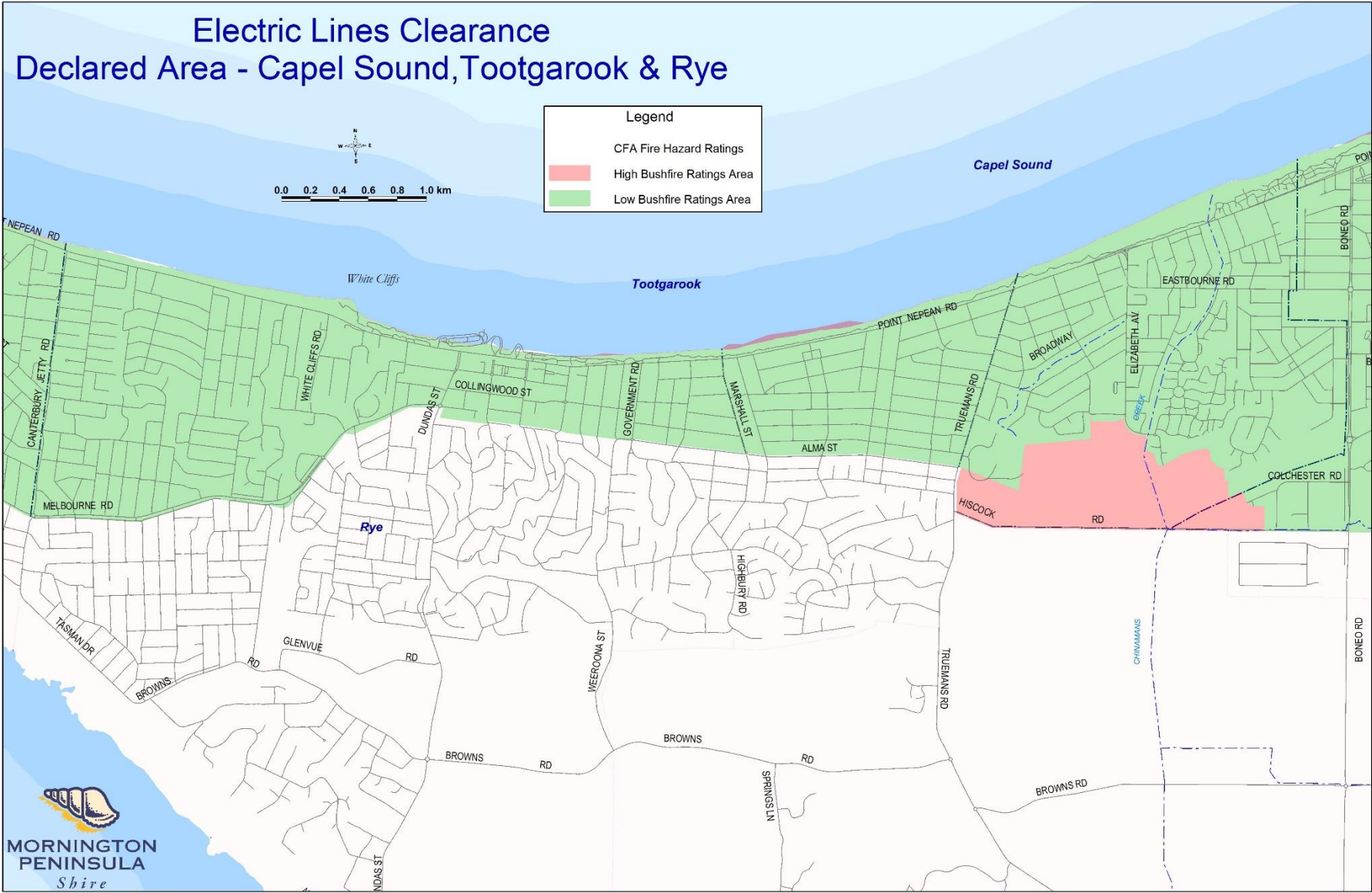
CFA Bushfire Ratings data updated November 2022
<https://www.cfa.vic.gov.au/plan-prepare/building-planning-regulations/electric-line-vegetation-clearance>

2025-2026 Electrical Line Clearance Plan – Mornington Peninsula Shire



Declared Areas for Powerline Clearing.gws - 19/12/2022

CFA Bushfire Ratings data updated November 2022
<https://www.cfa.vic.gov.au/plan-prepare/building-planning-regulations/electric-line-vegetation-clearance>

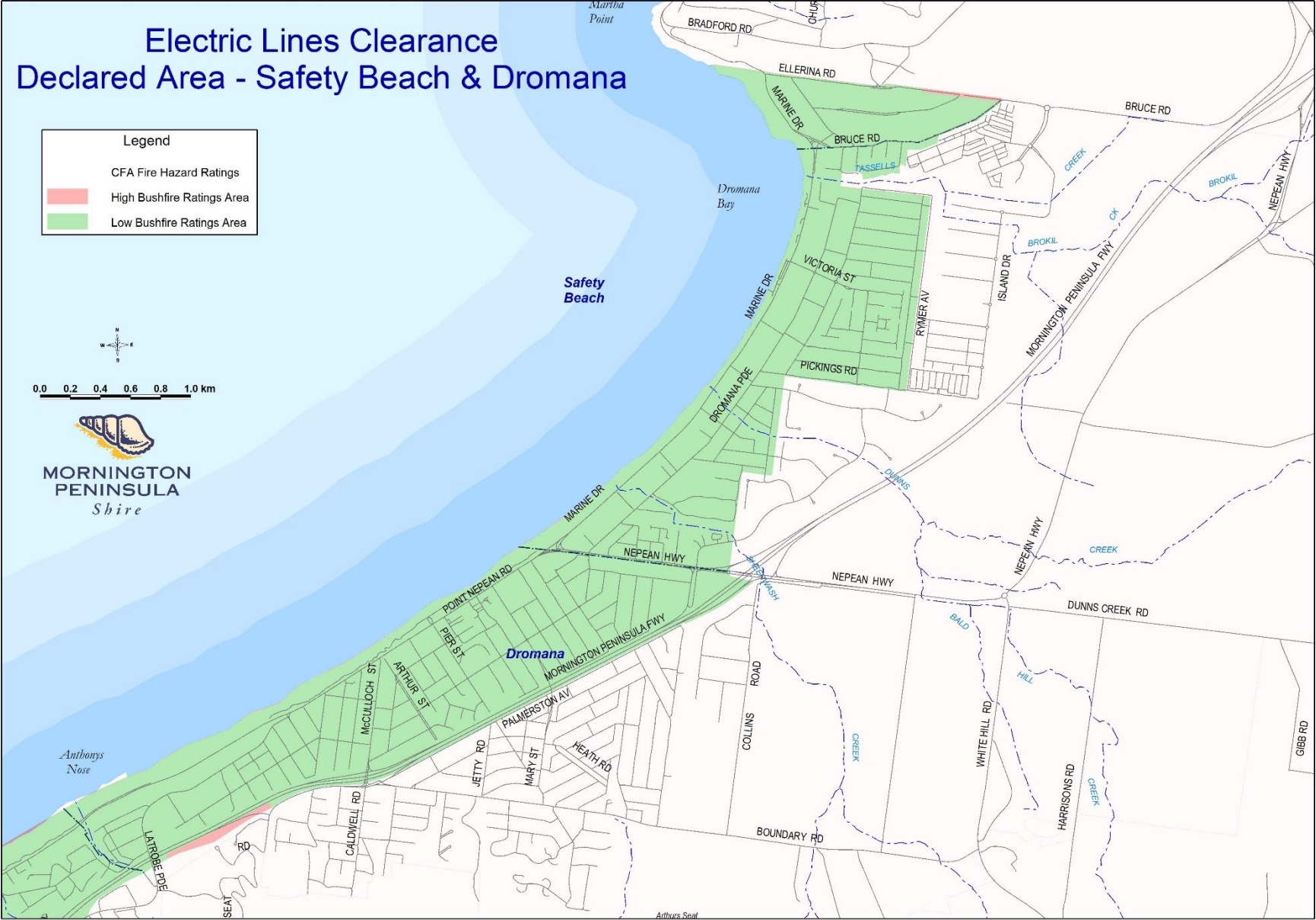


Declared Areas for Powerline Clearing.gws - 19/12/2022

CFA Bushfire Ratings data updated November 2022
<https://www.cfa.vic.gov.au/plan-prepare/building-planning-regulations/electric-line-vegetation-clearance>

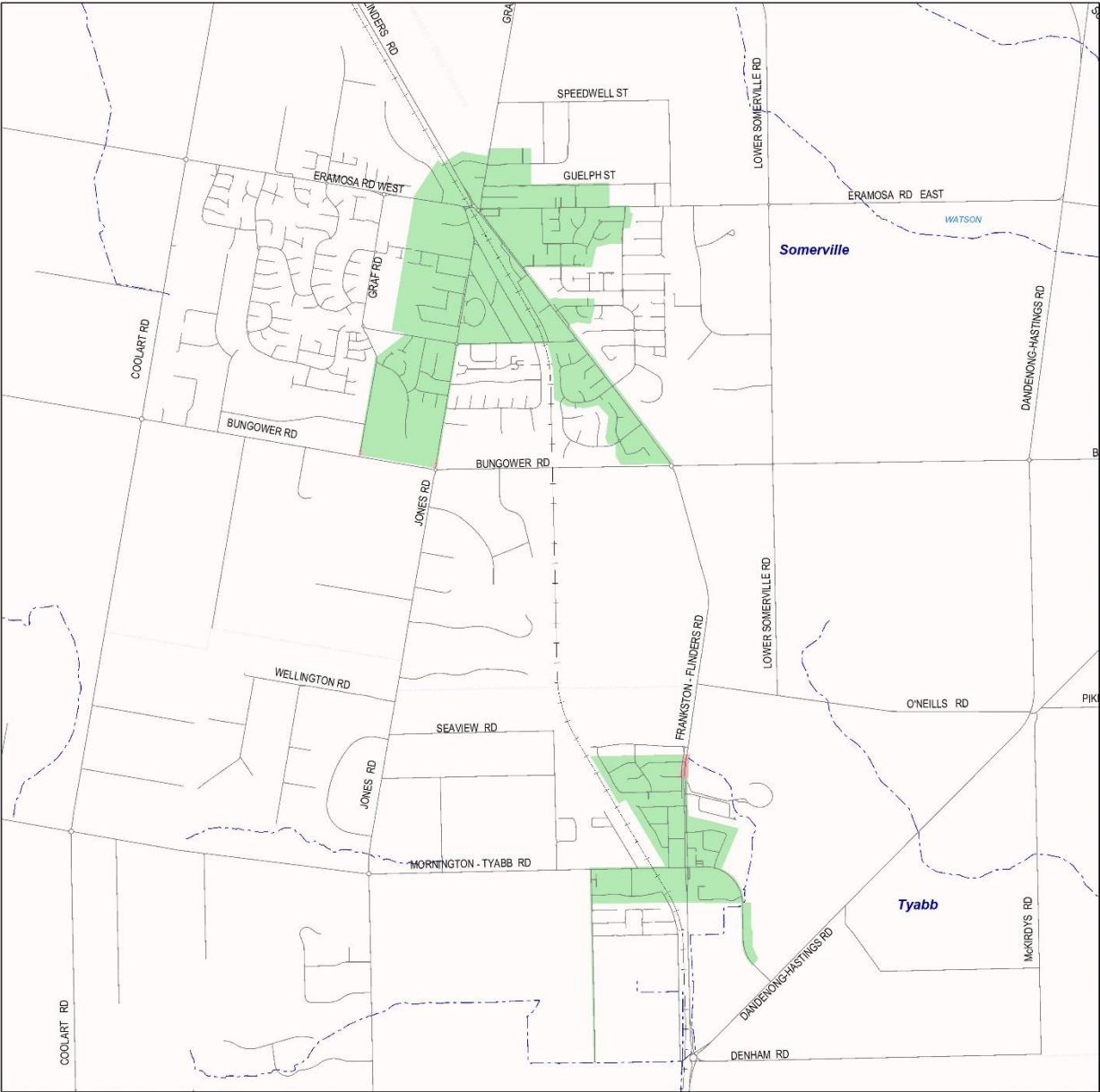
INTERNAL





Declared Areas for Powerline Clearing.gws - 19/12/2022

CFA Bushfire Ratings data updated November 2022
<https://www.cfa.vic.gov.au/plan-prepare/building-planning-regulations/electric-line-vegetation-clearance>



Declared Areas for Powerline Clearing.gws - 19/12/2022

Electric Lines Clearance Declared Area - Tyabb & Somerville



Legend

CFA Fire Hazard Ratings

High Bushfire Ratings Area

Low Bushfire Ratings Area



0.0 0.2 0.4 0.6 0.8 1.0 km

CFA Bushfire Ratings data updated November 2022
<https://www.cfa.vic.gov.au/plan-prepare/building-planning-regulations/electric-line-vegetation-clearance>

Appendix C

Lines Clearance Vegetation Management Letter drop Notification

ELECTRICAL LINES CLEARANCE PROGRAM



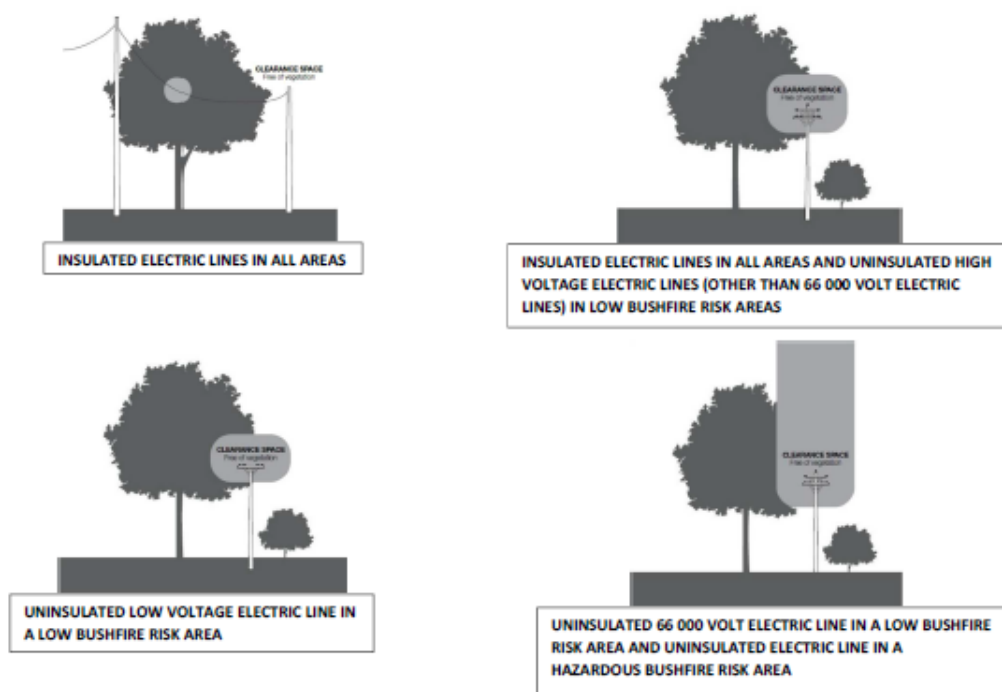
Dear Customer

As part of the Shire's obligation to keep powerlines clear of vegetation, pruning works will be completed in your street in 14-60 days time.

Pruning of trees is undertaken in accordance with best practice methods and some trees encroaching into the clearance zones may need to be removed.

Changed traffic conditions and minor delays may be experienced while these works are being undertaken.

Further information regarding vegetation management is available on our website <http://www.mornpen.vic.gov.au/Building-Planning/Shire-Maintenance/Trees-Vegetation#Powerline-Clearing-4> or contact us on 1300 850 600.



CONTROLLED COPY NO.:

Revision Number: 1

Issue Date: 28 February 2025

Approved by:

Name: Mark Stoemer

Position: Chief Executive Officer

Lines Clearance Vegetation Management Letter Drop Notification– Tree Removal

ELECTRICAL LINES CLEARANCE PROGRAM

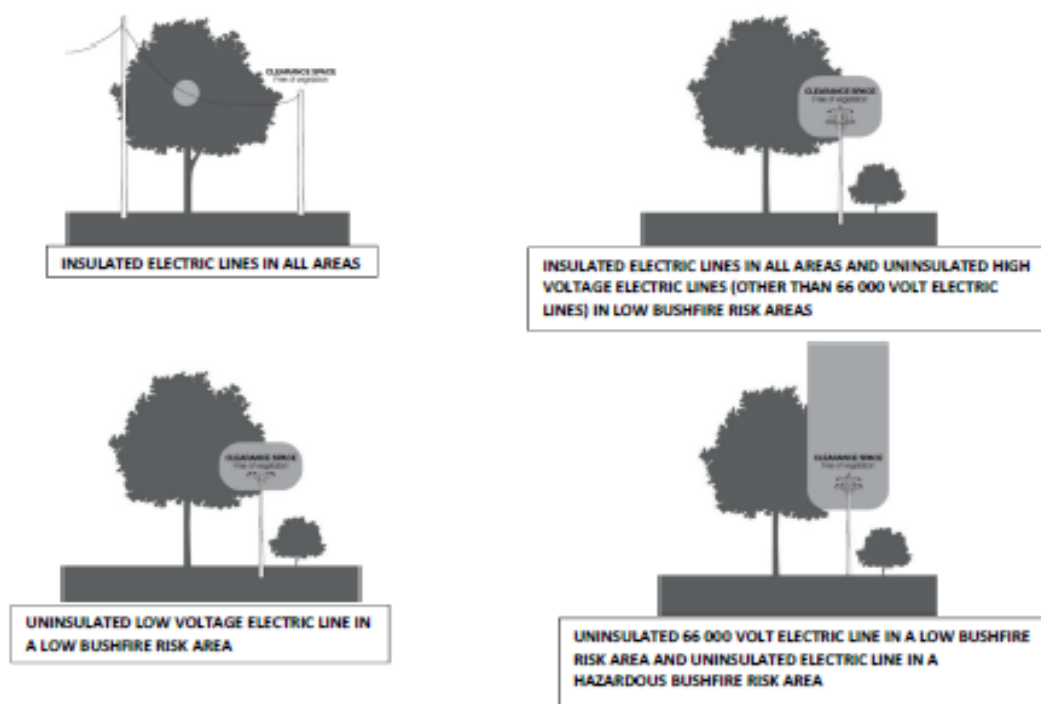


Dear Customer

The Mornington Peninsula Shire has an obligation to keep powerlines clear of vegetation. Pruning of trees is undertaken in accordance with best practice methods, however on occasion this will require the removal of some trees encroaching into the clearance zones.

The **##TREE SPECIES##** at **##ADDRESS##** has grown within the clearance zone and will require removal. This will be completed in 14-60 days' time. Changed traffic conditions and minor delays may be experienced while this work is being undertaken. Replacement planting with appropriate species may be undertaken where suitable.

Further information regarding vegetation management is available on our website <https://www.mornpen.vic.gov.au/Online-Forms-and-Services/Trees-Vegetation> or contact us on 1300 850 600.



CONTROLLED COPY NO.:
Revision Number: 1
Issue Date: 28 February 2025

Approved by:
Name: Mark Stoemer
Position: Chief Executive Officer

Appendix D

Mornington Peninsula Shire Publications Example Notification

Electric Lines Clearance

As part of our obligation to keep powerlines clear of vegetation in adherence to the Electricity Safety (Electric Line Clearance) Regulations 2020, we have programmed works in (##_Township_##) area commencing soon. The pruning of street trees will be undertaken in accordance with best practice methods and some trees encroaching into the clearance zones may need to be removed. Works will not start until 14 days, but no later than 60 days of this notice. Changed traffic conditions and minor delays could apply while the works are carried out.

Further information regarding vegetation management is available on our website www.mornpen.vic.gov.au/Online-Forms-and-Services/Trees or contact us on 1300 850 600.

CONTROLLED COPY NO.:
Revision Number: 1
Issue Date: 28 February 2025

Approved by:
Name: Mark Stoemer
Position: Chief Executive Officer

Appendix E

Mornington Peninsula Shire Dispute Resolution Process

[Complaints - Mornington Peninsula Shire \(mornpen.vic.gov.au\)](http://mornpen.vic.gov.au)

Complaints

The Shire's Complaints Handling Policy serves to ensure complaints are dealt with fairly and impartially in resolving disputes between the Shire and complainants, without the need to make representations directly to external agencies.

What is a complaint?

A complaint is an expression of dissatisfaction with the Shire's level and quality of service, policies or procedures. Dissatisfaction may arise from the service provided by Shire staff, Councillors, contractors and systems or from the impact of a particular policy or procedure.

A valid complaint is one where it appears that the Shire has failed to respond appropriately to a request for service or not followed relevant policies or procedures.

CONTROLLED COPY NO.:
Revision Number: 1
Issue Date: 28 February 2025

Approved by:
Name: Mark Stoemer
Position: Chief Executive Officer

Appendix F

2024-25 Electrical Line Clearance Activity Program

HBRA Powerline Clearance (ELC) Annual Program			
HBRA Inspection Program	Spans	HBRA Pruning Program	Month
Balnarring	65	Balnarring	September - November
Balnarring Beach	36	Balnarring Beach	
Baxter	4	Baxter	
Bittern	24	Bittern	
Crib Point	119	Crib Point	
Dromana	6	Dromana	
Hastings	15	Hastings	
Mornington	1	Mornington	
Mount Eliza	57	Mount Eliza	
Mount Martha	15	Mount Martha	
Portsea	35	Portsea	
Rosebud	2	Rosebud	
Shoreham	182	Shoreham	
Somers	74	Somers	
Somerville	1	Somerville	
Sorrento	32	Sorrento	
Tyabb	9	Tyabb	
TOTAL	697		

CONTROLLED COPY NO.:
Revision Number: 1
Issue Date: 28 February 2025

Approved by:
Name: Mark Stoemer
Position: Chief Executive Officer

LBRA Powerline Clearance (ELC) Annual Inspection Program					
Year 1	Spans	Inspection	Year 2	Spans	Inspection
Capel Sound	1072	June	Mornington	1998	June
Mornington	1998	July	Capel Sound	1072	July-September
Bittern	111		Mount Eliza	1924	
Baxter	148	July-August	Bittern	111	August
Crib Point	269	August	Somerville	378	
Somerville	378		Crib Point	269	September
Dromana	799	August	Tyabb	174	October
Tyabb	174		Dromana	799	
Hastings	774	August-September	Baxter	148	October-November
Mount Eliza	1924		Hastings	774	
Safety Beach	504	October-November	Balnarring	279	November
Balnarring	297		Safety Beach	504	
McCrae	367	December	Balnarring Beach	156	December
Balnarring Beach	156		McCrae	367	
Tootgarook	482	January	Merricks Beach	78	January
Merricks Beach	78		Tootgarook	482	
Rosebud	1694	February	Flinders	356	February
Flinders	356		Shoreham	66	
Shoreham	66	February-March	Somers	466	March-April
Rye	1359		Blairgowrie	1061	
Somers	466	March-April	Rosebud	1694	February
Blairgowrie	1061		Portsea	483	March
Portsea	483	May-June	Rye	1359	March-April
Mount Martha	366		Sorrento	953	April
Sorrento	953		Mount Martha	366	May-June
Total	16,318		Total	16,318	

CONTROLLED COPY NO.:**Revision Number:** 1**Issue Date:** 28 February 2025**Approved by:****Name:** Mark Stoemer**Position:** Chief Executive Officer

LBRA Powerline Clearance (ELC) 2 Year pruning Program		
Year 1	Spans	Pruning
Sorrento	953	July - August
Capel Sound	1072	August-September
Bittern	111	September
Crib Point	269	
Dromana	799	October-November
Hastings	774	December-February
Safety Beach	504	February
McCrae	367	
Tootgarook	482	March
Rosebud	1694	March-June
Rye	1359	April-June
Total	8384	
Year 2	Spans	Pruning
Mount Martha	366	July-August
Mornington	1998	August-October
Mount Eliza	1924	September-December
Somerville	378	October
Tyabb	174	November
Baxter	148	November
Balnarring	279	December
Balnarring Beach	156	December-January
Merricks Beach	78	January
Flinders	356	February
Shoreham	66	February-March
Somers	466	March-April
Blairgowrie	1061	April-May
Portsea	483	May-June
Total	7933	

HBRA Spans	697	
LBRA Spans	16318	
Total	17015	

CONTROLLED COPY NO.:
Revision Number: 1
Issue Date: 28 February 2025

Approved by:
Name: Mark Stoemer
Position: Chief Executive Officer

Appendix G

Risk matrix and Prioritisation Tool

The purpose of the Risk matrix and Prioritisation Tool is to clearly layout the inspection criteria agreed to by Ventia, the Mornington Peninsula Shire (MPS) and their risk management group. The intention is that the exposure to Public Liability is reduced by having a robust system of inspection that considers common problems encountered with trees. By having suggested response times, it allows consistency and management of outstanding works.

Scope

This document is for all tree inspections (proactive and reactive) within the Mornington Peninsula Shire covered under the CAMS Tree Management Contract

Definitions

CN 2640 - CAMS Tree Management Services Contract – Current Ventia contract with the Mornington Peninsula Shire

Public Liability (PL) – An occurrence that results in or is alleged to have resulted in personal injury and / or property damage to a third party from business related activities controlled by Ventia within the Mornington Peninsula Shire.

Mornington Peninsula Shire (MPS) – The client

Ventia – Tree Management Services Contractor

Procedure

Part of the requirement of the CAMS Tree Management Contract is that inspections are carried out on various trees within the Shire as outlined in Annexure 9 of the CAMS Tree Management Contract documents. These may be nature strip trees or trees within a park or reserve. The inspections may be triggered via a report from a resident or by the reserve's inspection programme.

Formalisation of a risk matrix and prioritisation tool allows consistency within the inspection and rating process. The matrix and prioritisation tool are not to supersede the professional knowledge the Arborists have but rather to assist them in determining the level of risk allowable over a defined period. This level of risk versus time equation is presented by Ventia and the MPS has reviewed and accepted this is an acceptable response time frame for their assets.

Arborists may at their discretion, based on the evidence at the scene, determine that a higher priority is required than delivered under the matrix. This response will take precedence over the matrix. It is not expected that this will be a common occurrence it is only for use when the specific data collected on site demands a higher priority. In general, there are four likely treatment options for mitigation of the risk:

- Tree Removal
- Tree Pruning
- Reinspection and Condition Monitoring
- No further treatment required.

CONTROLLED COPY NO.:

Revision Number: 1

Issue Date: 28 February 2025

Approved by:

Name: Mark Stoemer

Position: Chief Executive Officer

RISK MATRIX WORKS PRIORITISATION TOOL

TABLE 1 RISK MATRIX LIKELIHOOD

Level	Descriptor	Definition
A	Failure certain (5)	<p><i>Extensive structural degradation by pathological¹, biological² or environmental agents³ on the buttress roots, trunk or scaffold branches of a tree, that has led to major collapse of weighted material. See Footnotes^{1 2 3}</i></p> <p>Indicative faults Point Assets Intervention Hierarchy Linear Assets</p> <p><input type="checkbox"/> Unsupported failure or imminent failure of weighted material due to defective structure (active split or lateral tension crack etc.) of trunk scaffold branch or buttress roots</p> <p><input type="checkbox"/> Unstable dead tree</p> <p><input type="checkbox"/> Branches protrude into vehicle, pedestrian or equestrian envelope that when struck may fall resulting in potential damage or injury</p> <p><input type="checkbox"/> Other (Failure Certain) or individual tree meets intervention hierarchy of Powerline and programmed vegetation management.</p> <p>Powerlines <input type="checkbox"/> High voltage conductors or low voltage bare conductors / LV ABC with HV above</p> <p>Programmed Vegetation Pruning <input type="checkbox"/> Road Class A Local Arterial Roads between town centres. Refer to Table 4 for descriptions & Map Appendix 1 See Footnote⁴</p>
B	Failure likely (4)	<p>Definition</p> <p><i>That in the foreseeable future, localised structural degradation by pathological¹, biological² or environmental agents³ on the buttress roots, trunk or scaffold branches of a tree, will lead to major collapse of weighted material. See Footnotes^{1 2 3}</i></p> <p>Indicative faults Point Assets Intervention Hierarchy Linear Assets</p> <p><input type="checkbox"/> Tree has a recorded history of major limb failure within the last twelve months.</p> <p><input type="checkbox"/> Supported failure or imminent failure of trunk scaffold branch or weighted material</p> <p><input type="checkbox"/> Scaffold branch or greater in protruding into (>0.5mtrs) the statutory clearance code,</p> <p><input type="checkbox"/> Over weighted limbs or unbalanced tree associated with a visible structural defect, eg (termites, borers, decay),</p> <p><input type="checkbox"/> Roots protruding out of the ground or Major obvious root activity (surface roots, damage built assets etc)</p> <p><input type="checkbox"/> Foliage or greater blocking regulatory signage (speed zones etc) creating a safety hazard</p> <p><input type="checkbox"/> History of branch failure as a result of advancing senescence or dead and structurally degrading.</p> <p><input type="checkbox"/> Other (Failure Likely) or individual tree meets intervention hierarchy of Powerline and programmed vegetation man.</p> <p><input type="checkbox"/> Tree cannot be retained impacted by or impacting an essential service</p> <p>Powerlines</p> <p><input type="checkbox"/> Low voltage bare conductors. <input type="checkbox"/> High voltage Aerial Bundled Cable</p> <p>Programmed Vegetation Pruning</p> <p><input type="checkbox"/> Road Class B Collector Roads. Primarily for the distribution of traffic Refer to Table 4 for descriptions & Map Appendix 1 - Equestrian trails, Pedestrian Pathway also at this level See Footnote⁴</p>
C	Failure possible (3)	<p>Definition</p> <p><i>The tree shows signs of repairing structural degradation through secondary growth and the compartmentalisation (or walling off) of areas of, localised structural degradation by pathological¹, biological² or environmental agents³ on the buttress roots, trunk or scaffold branches of a tree, to a degree that through management options other than removal the potential for major collapse may be avoided. See Footnotes^{1 2 3}</i></p> <p>Indicative faults Point Assets Intervention Hierarchy Linear Assets</p> <p><input type="checkbox"/> Tree in declining cond. showing potential for failure- due to branch collar formation over-extension disease pathogens, or developing structural faults.</p> <p><input type="checkbox"/> Dead tree</p> <p><input type="checkbox"/> Significant changes in growing environment such as the removal of adj. trees (wind exposure),</p> <p><input type="checkbox"/> Large canopy tree having the potential to fail</p> <p><input type="checkbox"/> Root activity (surface roots, with potential to cause damage to infrastructure and built assets.</p> <p><input type="checkbox"/> Other (Failure Possible) or individual tree meets intervention hierarchy of Powerline and programmed vegetation management.</p> <p>Powerlines <input type="checkbox"/> Service Lines including Low Voltage Aerial Bundled Cable</p> <p>Programmed Vegetation Pruning</p> <p><input type="checkbox"/> Road Class C Urban and Rural Access Roads & D Limited Access Roads See Footnote⁴</p>
D	Failure unlikely (2)	<p>Definition</p> <p><i>The tree shows no or few signs of structural degradation and through secondary growth and the compartmentalisation (or walling off) of areas of, localised structural degradation by pathological¹, biological² or environmental agents³ on the buttress roots, trunk or scaffold branches of a tree, to a degree that no maintenance management has been identified for the foreseeable future. See Footnotes^{1 2 3}</i></p> <p>Indicative faults Point Assets Intervention Hierarchy Linear Assets</p> <p><input type="checkbox"/> Tree in average condition showing potential for failure-due to branch collar formation over-extension disease pathogens or developing structural faults.</p> <p><input type="checkbox"/> Through normal growth the tree has the potential to develop over-extension of branches.</p> <p><input type="checkbox"/> Minor branch attrition collar development and deadwood (<50mm apparent) or obvious root activity may be apparent.</p> <p><input type="checkbox"/> Other(Failure unlikely)</p>
E	Low potential (1)	<p><input type="checkbox"/> The tree appears healthy with good open branch structure.</p> <p><input type="checkbox"/> No apparent sign of disease or damage that would lead to future failure</p> <p><input type="checkbox"/> No encroachment into any vehicle or pedestrian envelope</p> <p><input type="checkbox"/> Other(Low Potential)</p>

CONT
Revisi
Issue

RISK MATRIX PRIORITISATION TOOL APPROVED 040614.docx

RISK MATRIX WORKS PRIORITISATION TOOL

TABLE 2 CONSEQUENCE

Level	Descriptor (Rating)	Example details of descriptor or rating
5	Catastrophic (5)	<p><input type="checkbox"/> Trees over a picnic table or over other public frequented area or other people attractor,</p> <p><input type="checkbox"/> <u>Within the pavement envelope</u> along a recognised shared pathway or an equestrian trail,</p> <p><input type="checkbox"/> Significant growth (>50mm diameter) <u>impacting</u> a fixed asset impacting or damaging a fixed asset or movable assets</p> <p><input type="checkbox"/> Where fixed asset damage is evident</p> <p><input type="checkbox"/> Tree may fail immediately (roots or branches),</p> <p><input type="checkbox"/> Statutory road signs, site distance non-compliant and street lighting zone blocked.</p> <p><input type="checkbox"/> High speed (refer Footnote 4) or traffic volume Local Arterial or Collector road significant Impediment</p> <p><input type="checkbox"/> Service repair cannot occur whilst tree remains.</p> <p><input type="checkbox"/> Other Catastrophic</p> <p>Powerlines</p> <p><input type="checkbox"/> Parts of tree within 1 metre of HV bare conductors <input type="checkbox"/> Redirectional hard contact with LV, service lines or ABC cables</p> <p>Programmed Vegetation Pruning</p> <p><input type="checkbox"/> Access 100 % blocked to road as a result of fallen or encroached vegetation</p> <p>Urban - Vegetation growing over gutter or road edge for more than 50% of the road length</p> <p>Urban - Vegetation growing into vehicle envelope at less than 4 metres height</p> <p>Urban - Vegetation growing into parking lane or bike lane more than 50% of the road length.</p> <p>Rural - Vegetation Over road edge or white line at various intervals along road edge for more than 50% of the road length.</p> <p>Rural – Scaffold branches growing into vehicle envelope and obstructing large vehicles for more than 50% of the road length.</p>
4	Major (4)	<p><input type="checkbox"/> Trees is in a grassed area likely to attract people,</p> <p><input type="checkbox"/> <u>Within the statutory clearance zone</u> on a rural or urban arterial road or along a recognised pathway or equestrian trail in any zone</p> <p><input type="checkbox"/> Statutory guide signs site distance non-compliant and street lighting zone partially blocked.</p> <p><input type="checkbox"/> Where fixed asset damage is likely.</p> <p><input type="checkbox"/> Where trees may not fail immediately (roots or branches),</p> <p><input type="checkbox"/> Over where movable asset would be expected eg high-use car park area/school zone/bus stop.</p> <p><input type="checkbox"/> Other Major</p> <p>Powerlines</p> <p><input type="checkbox"/> Parts of tree through LV conductors and within HV minimum clearance</p> <p><input type="checkbox"/> Touching LV conductors</p> <p><input type="checkbox"/> In Aerial Bundled Cable / service wire minimum clearance or soft touch</p> <p>Programmed Vegetation Pruning</p> <p><input type="checkbox"/> Urban - Vegetation Growing over gutter or road pavement edge at various intervals along road length</p> <p>Urban - Vegetation growing into clearance envelope between 4 – 5 metres height</p> <p>Urban – Vegetation growing up to gutter or road edge - (Road width less than 5 metres)</p> <p>Rural - Vegetation up to road edge or white line for more than 50% of the road length</p> <p>Rural – Scaffold branches growing into clearance for more than 50% of the road length.</p>
3	Moderate (3)	<p><input type="checkbox"/> Trees is in a grassed area with a reduced likelihood of people being around it,</p> <p><input type="checkbox"/> Along an unmade path in a residential, commercial or industrial area,</p> <p><input type="checkbox"/> Significant (Branch/Root) growth near fixed asset (impact on asset but damage not present),</p> <p><input type="checkbox"/> A movable asset might be expected eg car park area/school zone /people attractor</p> <p><input type="checkbox"/> Other Moderate</p> <p>Powerlines</p> <p><input type="checkbox"/> Parts of tree within LV minimum clearance space <input type="checkbox"/> In HV minimum space, but clear more than one metre</p> <p>Programmed Vegetation Pruning</p> <p><input type="checkbox"/> Urban – Vegetation growing up to gutter or road edge – (Road width greater than 5 metres)</p> <p>Rural - Vegetation up to road or pavement edge or white line at various intervals along road edge amounting to more than 50% of the road length</p>
2	Minor (2)	<p><input type="checkbox"/> Trees is in an out of the way area and unlikely to attract people,</p> <p><input type="checkbox"/> Along an unmade path in a rural area,</p> <p><input type="checkbox"/> Over where a movable asset can access but wouldn't access normally</p> <p><input type="checkbox"/> Other Minor</p> <p>Powerlines</p> <p><input type="checkbox"/> HV and LV clearance space currently compliant, but likely to encroach within six months</p> <p>Programmed Vegetation Pruning</p> <p><input type="checkbox"/> Urban - Vegetation growing into clearance envelope but not to road or gutter edge</p> <p>Rural - Vegetation growing into road pavement shoulder for more than 50% of the road length</p>
1	Insignificant (1)	<p><input type="checkbox"/> Tree is in out of the way area with no path or other asset near it.</p> <p><input type="checkbox"/> Recent audited completion of program and clearance compliance.</p> <p><input type="checkbox"/> Other Insignificant</p> <p>Powerlines</p> <p><input type="checkbox"/> Recent audited completion of program and clearance compliance. Clearance space to code</p> <p>Programmed Vegetation Pruning</p> <p><input type="checkbox"/> Urban - Vegetation behind clearance envelope and roadway is clear</p> <p><input type="checkbox"/> Rural - Vegetation growing into road shoulder at various intervals (1 Point)</p> <p>Rural – Road Shoulder clear of vegetation and road way clear (0 Points)</p>

CONT
Revisi
Issue

RISK MATRIX PRIORITISATION TOOL

RISK MATRIX WORKS PRIORITISATION TOOL

TABLE 3 RISK ANALYSIS MATRIX - LEVEL OF RISK OR RATING

Likelihood & (Rating No.)	Consequences & (Rating No.)				
	Insignificant (1)	Minor (2)	Moderate (3)	Major (4)	Catastrophic (5)
A Certain (5)	L (6)	M (7)	H (8)	I (9)	I (10)
B Likely (4)	L (5)	M (6)	T (7)	H (8)	I (9)
C Possible (3)	L (4)	L (5)	M (6)	T (7)	H (8)
D Unlikely (2)	L (3)	L (4)	L (5)	L (6)	L (7)
E Low Potential (1)	L (2)	L (3)	L (4)	L (5)	L (6)
LIKELIHOOD + CONSEQUENCE = RATING EG A5 = 5+5=10					
	Major Works				
I	<u>Immediate</u> (10) treatment as soon as possible, <24 Hours in most cases. <u>Immediate</u> (9) Supported 1 month to allow for programming and permit application.				
H	<u>High risk</u> Treatment of tree required within 12 months to allow for programming and permit application. Trees may be reinspected in response to community concern. Proactive inspection 12 months				
T	<u>Transitional risk</u> Reinspected within 12 Months, Proactive inspection 36 months unless flagged by community or Arborist				
M	<u>Moderate risk</u> No action required. Proactive inspection 36 months				
L	<u>Low risk</u> No action required. Proactive inspection 60 months				
	NOTE VEGETATION & POWERLINE PRUNING WORKS PROGRAMMED IN ACCORDANCE WITH RATING NO. WITH INTEGRATED ARBORICULTURE DELIVERY PLAN & NOT SUBJECT TO LIKELIHOOD AND CONSEQUENCE RISK RATING				
	Reactive Works (Customer Service Requests deemed reactive and not programmable)				
I	<u>Immediate</u> treatment as soon as possible, <24 Hours in most cases.				
H	<u>High risk</u> Treatment of tree required within 1 Months				
T	<u>Transitional risk</u> Treatment of tree required within 3 Months				
M	<u>Moderate risk</u> No works required or treatment of tree required within 6 Months.(to be programmed)				
L	<u>Low risk</u> No action required				
	NOTE PROGRAMMED VEGETATION PRUNING & POWERLINE WORKS PROGRAMMED IN ACCORDANCE WITH RATING NO. WITH INTEGRATED ARBORICULTURE DELIVERY PLAN & NOT SUBJECT TO RISK RATING				

Table 4 Road Descriptors The following road descriptors are taken from the Road Traffic Management Act 2004 and are referenced in the risk matrix above.

Road Classification in Urban Areas	Road Class	Class Type	Service Function Description	Brief Description Rural Areas
	* 0A	Urban Arterial	Provides primarily for the main connection from town centres and local areas to the wider State main roads network.	Generally a 4 lane or 2 lane 2 way sealed road with provision for parking on both sides.
	* 0B	Urban Collector	Provides collecting and distributing traffic and acting as a feeder service to local arterial roads.	Mainly a 2 way, 2 lane, sealed road commonly with parking on one side.
	* 0C	Urban Access	Provides predominantly for direct access to properties, recreational areas and industries in urban zones.	A 2 way, 2 lane, sealed or unsealed road.
	* 0D	Urban Limited Access	Provides primarily for limited access and in rural areas using four wheel drive vehicles.	General one lane, 2 way road at the rear of properties or informal tracks within recreation areas parks.
Road Classification in Rural Areas	Road Class	Class Type	Service Function Description	Brief Description Rural Areas
	* 1A	Rural Arterial	Provides primarily for the main connection from town centres and local areas to the wider State main roads network.	2 way, 2 lane, mainly sealed.
	* 1B	Rural Collector	Provides collecting and distributing traffic and acting as a feeder service to local arterial roads.	2 way, 2 lane, sealed or unsealed road.
	* 1C	Rural Access	Provides predominantly for direct access to properties, recreational areas and industries in urban and rural zones.	2 way, mainly 2 lane, mainly sealed
	* 1D	Rural Limited Access	Provides primarily for limited access and in rural areas using four wheel drive vehicles.	2 way, unformed single lane track with limited geometry and possible access restrictions imposed.

FOOTNOTES

¹ (fungal or bacterial), ² (insects-borers, termites or other fauna), ³ (sun, wind, rain or the actions of people and machines) on

⁴ PROGRAMMED VEGETATION PRUNING – Low Use – Less than 300 cars per day, – Moderate Use – 300 to 500 cars per day, – High Use – More than 500 cars per day

RISK MATRIX PRIORITISATION TOOL APPROVED 040614.docx

CONTROLLED COPY NO.:

Revision Number: 1

Issue Date: 28 February 2025

Approved by:

Name: Mark Stoemer

Position: Chief Executive Officer

Appendix H

Parks and Roadsides (Ventia) Internal Quality Audit

2/21/22, 11:35 AM

SolvSafety - 3047 Quality Walk



3047 Quality Walk | 3047 Quality Walk



3047 Quality Walk

Location *

Specific Location

Auditor *

Position *

Date Conducted *

Merit No.

Purpose

Description

1. Has the work been carried out to an acceptable standard in accordance with the requirements of the task? *

2. Has work been carried out in accordance with the Scope of Works? *

3. Have the correct materials been used for the task? *

4. Is a Scope of Works for the task held at the job location? *

5. Did the Scope of Work cover all the required activities? *

<https://app.solv.com.au/##app/safety/form/add/476/0/0>

1/2

CONTROLLED COPY NO.:

Revision Number: 1

Issue Date: 28 February 2025

Approved by:

Name: Mark Stoemer

Position: Chief Executive Officer

2/21/22, 11:35 AM

SolvSafety - 3047 Quality Walk

6. Is contract work instruction available to the work crew? *

7. Do workers completing the task hold the required competencies? *

8. Do workers have access to the specific documents for the task i.e. hazard register, SDS, etc.)? *

Acceptance of Quality Walk

Conducted by *

There are no records...

Date

Position

Attachment1

Select file or drag and drop...

There are no attachments...

CAMS Monthly Audit (Trees)		January	February	March	April	May	June	July	August	September	October	November	December
E L C	Quality Walk	3	3	3	3	3	3	3	3	3	3	3	3
	% Comp. works	10% completed	10% completed	10% completed	10% completed	10% completed	10% completed	10% completed	10% completed	10% completed	10% completed	10% completed	10% completed

CONTROLLED COPY NO.:

Revision Number: 1

Issue Date: 28 February 2025

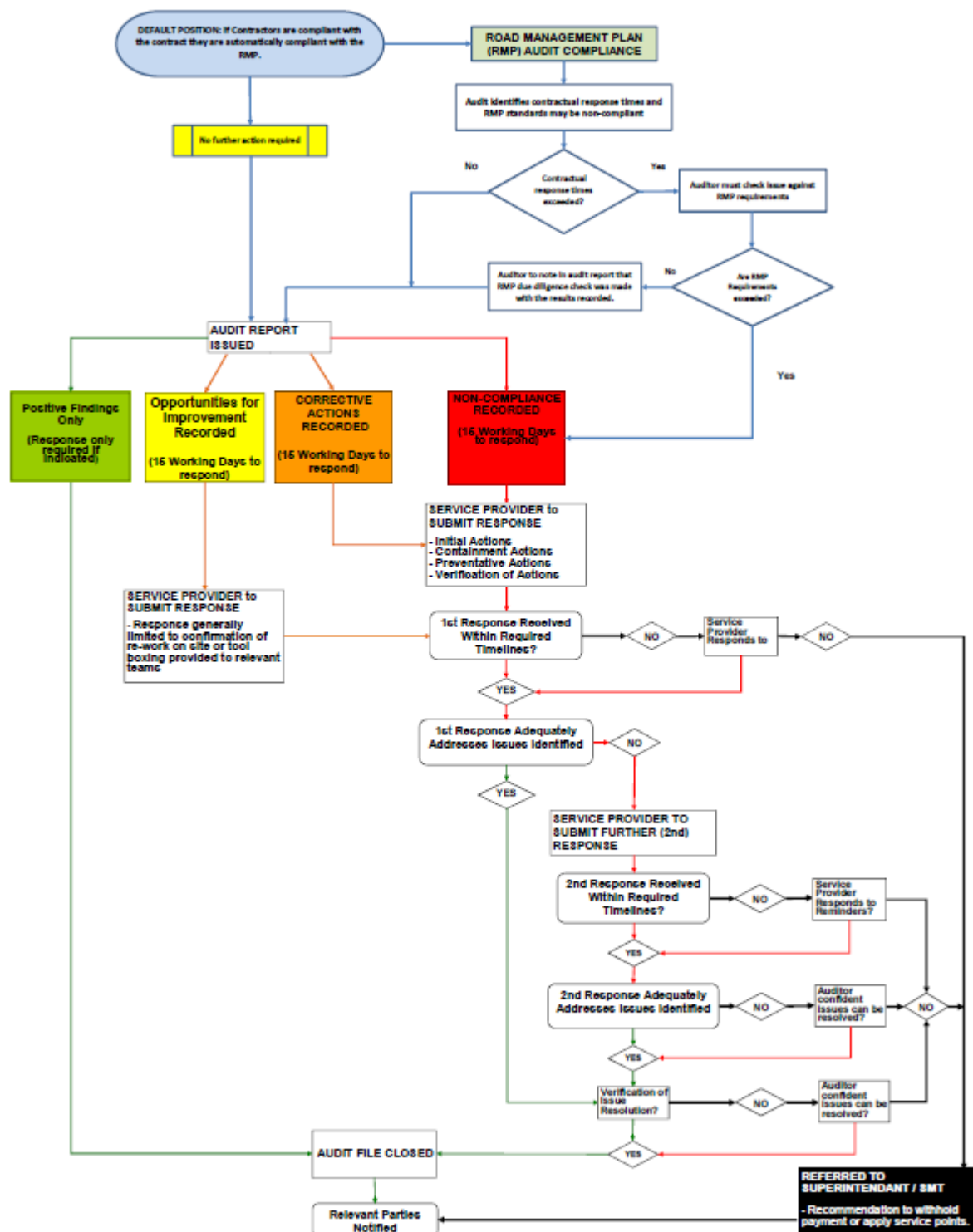
Approved by:

Name: Mark Stoemer

Position: Chief Executive Officer

Appendix I

Mornington Peninsula Shire Infrastructure Maintenance Department – AUDIT RESPONSE PROCESS



CONTROLLED COPY NO.:
Revision Number: 1
Issue Date: 28 February 2025

Approved by:
Name: Mark Stoemer
Position: Chief Executive Officer

Appendix J

MPS Infrastructure Services 2024 / 2025 Contract Auditing Program

Legend:		Field Inspection								Systems Audit		
CAMS ELC Program	July	Aug	Sept	Oct	Nov	Dec	Jan	Feb	March	April	May	June
HBRA Compliance Inspection												
LBRA Power Line Clearing Program												
Vegetation Inspection & Reporting												
Safety (Routine & Non-Routine) Inc. Sub Contractors												
Management Systems Audit (including Emergency Call Out)												

CONTROLLED COPY NO.:
Revision Number: 1
Issue Date: 28 February 2025

Approved by:
Name: Mark Stoemer
Position: Chief Executive Officer

CONTROLLED COPY NO.:
Revision Number: 1
Issue Date: 28 February 2025

59

Appendix L

Exception to minimum clearance – Span

ELC Exceptions to minimum clearance Part2 Div1

SPAN ID	PL11008105
STREET NUMBER	16
STREET NAME	Gerald Street
SUBURB	Tyabb
SITE	16 Gerald St Tyabb
LIS	11008105 – 11008106
INSPECTION DATE	15/04/2025
COMMENTS	<p>7 - Span is subject to exception to minimum clearance space for structural branches around uninsulated LV conductors (Electrical Safety (ELC) Regulations 2020 Part 2.1.7).</p> <p>Tree - ST033342 - has 250mm structural branch within 500mm of clearance.</p>
DEFECTS	No defects found
MAINTENANCE	Re-Inspection
MAINTENANCE COMMENTS	Annual Reinspection
DUE DATE	15/04/26
COMPLETION DATE	

CONTROLLED COPY NO.:
Revision Number: 1
Issue Date: 28 February 2025

Approved by:
Name: Mark Stoemer
Position: Chief Executive Officer

ELC Exceptions to minimum clearance Part2 Div1

SPAN ID	PL1110425
STREET NUMBER	1
STREET NAME	Sefton Court
SUBURB	Hastings
SITE	In Villawood Drive
LIS	1110425 – 1110424
INSPECTION DATE	15/04/25
COMMENTS	<p>7 - Span is subject to exception to minimum clearance space for structural branches around uninsulated LV conductors (Electrical Safety (ELC) Regulations 2020 Part 2.1.7).</p> <p>Tree - ST036876 - has 300mm structural branch within 500mm of clearance.</p>
DEFECTS	No defects found
MAINTENANCE	Re-Inspection
MAINTENANCE COMMENTS	Annual Reinspection
DUE DATE	15-4-26
COMPLETION DATE	

CONTROLLED COPY NO.:
Revision Number: 1
Issue Date: 28 February 2025

Approved by:
Name: Mark Stoemer
Position: Chief Executive Officer

ELC Exceptions to minimum clearance Part2 Div1

SPAN ID	PL1110426
STREET NUMBER	34
STREET NAME	Villawood Drive
SUBURB	Hastings
SITE	Opposite Jenola Crt
LIS	1110426 - 1110427
INSPECTION DATE	15/04/25
COMMENTS	<p>7 - Span is subject to exception to minimum clearance space for structural branches around uninsulated LV conductors (Electrical Safety (ELC) Regulations 2020 Part 2.1.7).</p> <p>Tree - ST031987 - has 300mm structural branch within 500mm of clearance.</p>
DEFECTS	No defects found
MAINTENANCE	Re-Inspection
MAINTENANCE COMMENTS	Annual Reinspection
DUE DATE	15-4-26
COMPLETION DATE	

CONTROLLED COPY NO.:
Revision Number: 1
Issue Date: 28 February 2025

Approved by:
Name: Mark Stoemer
Position: Chief Executive Officer

ELC Exceptions to minimum clearance Part2 Div1

SPAN ID	PL11010448
STREET NUMBER	2
STREET NAME	Wingala Court
SUBURB	Hastings
SITE	2 Wingala Court Hastings
LIS	11010448 – 11010449
INSPECTION DATE	15/04/2025
COMMENTS	<p>7 - Span is subject to exception to minimum clearance space for structural branches around uninsulated LV conductors (Electrical Safety (ELC) Regulations 2020 Part 2.1.7).</p> <p>Tree - ST036380 - has 300mm structural branch within 500mm of clearance.</p>
DEFECTS	No defects found
MAINTENANCE	Re-Inspection
MAINTENANCE COMMENTS	Annual Reinspection
DUE DATE	15/04/26
COMPLETION DATE	

CONTROLLED COPY NO.:
Revision Number: 1
Issue Date: 28 February 2025

Approved by:
Name: Mark Stoemer
Position: Chief Executive Officer

ELC Exceptions to minimum clearance part2 Div1

SPAN ID	PL1106708
STREET NUMBER	9
STREET NAME	Ferguson drive
SUBURB	Balnarring Beach
SITE	12 Ferguson Dve
LIS	1106708 - 1106707
INSPECTION DATE	15/4/25
COMMENTS	<p>4 - Span is subject to exception to minimum clearance space for structural branches around insulated low voltage electric cable (Electrical Safety (ELC) Regulations 2020 Part 2.1.4).</p> <p>Tree - ST014864 - has a 300mm Structural branch of Tree 150mm inside clearance.</p>
DEFECTS	No defect found
MAINTENANCE	Reinspection
MAINTENANCE COMMENTS	Annual Reinspection
DUE DATE	15-4-26
COMPLETION DATE	

CONTROLLED COPY NO.:
Revision Number: 1
Issue Date: 28 February 2025

Approved by:
Name: Mark Stoemer
Position: Chief Executive Officer

ELC Exceptions to minimum clearance part2 Div1

SPAN ID	PL1106674
STREET NUMBER	6
STREET NAME	Sidney Street
SUBURB	Balnarring beach
SITE	7 Sidney Street
LIS	1106674 -1106675
INSPECTION DATE	15/04/25
COMMENTS	<p>4 - Span is subject to exception to minimum clearance space for structural branches around insulated low voltage electric cable (Electrical Safety (ELC) Regulations 2020 Part 2.1.4).</p> <p>Tree - ST033248 - has a 300mm Structural branch 150mm inside clearance.</p>
DEFECTS	No Defect Found
MAINTENANCE	Re-inspection
MAINTENANCE COMMENTS	Annual Reinspection
DUE DATE	15/4/26
COMPLETION DATE	

CONTROLLED COPY NO.:
Revision Number: 1
Issue Date: 28 February 2025

Approved by:
Name: Mark Stoemer
Position: Chief Executive Officer

ELC Exceptions to minimum clearance Part2 Div1

SPAN ID	PL1107814
STREET NUMBER	2
STREET NAME	Johnson street
SUBURB	Balnarring
SITE	2 Johnson Street
LIS	1107814 - 1107815
INSPECTION DATE	15/04/25
COMMENTS	<p>7 - Span is subject to exception to minimum clearance space for structural branches around uninsulated LV conductors (Electrical Safety (ELC) Regulations 2020 Part 2.1.7).</p> <p>Tree - ST037443 - has a 1400mm Trunk that is 350mm inside clearance.</p>
DEFECTS	No Defect Found
MAINTENANCE	Re-inspection
MAINTENANCE COMMENTS	Annual Reinspection
DUE DATE	15/4/26
COMPLETION DATE	

CONTROLLED COPY NO.:
Revision Number: 1
Issue Date: 28 February 2025

Approved by:
Name: Mark Stoemer
Position: Chief Executive Officer

ELC Exceptions to minimum clearance Part2 Div1

SPAN ID	PL1107816
STREET NUMBER	6
STREET NAME	Johnson street
SUBURB	Balnarring
SITE	(7 Johnson Street)
LIS	1107816 - 1107815
INSPECTION DATE	15/04/25
COMMENTS	<p>4 - Span is subject to exception to minimum clearance space for structural branches around insulated low voltage electric cable (Electrical Safety (ELC) Regulations 2020 Part 2.1.4).</p> <p>Tree - ST015268 - has 1200mm Trunk 150 mm inside clearance.</p>
DEFECTS	No Defect Found
MAINTENANCE	Re-inspection
MAINTENANCE COMMENTS	Annual Reinspection
DUE DATE	15/4/26
COMPLETION DATE	

CONTROLLED COPY NO.:
Revision Number: 1
Issue Date: 28 February 2025

Approved by:
Name: Mark Stoemer
Position: Chief Executive Officer

ELC Exceptions to minimum clearance Part2 Div1

SPAN ID	PL1107816
STREET NUMBER	8
STREET NAME	Johnson street
SUBURB	Balnarring
SITE	8 Johnson Street
LIS	1107816 - 1107815
INSPECTION DATE	15/4/25
COMMENTS	<p>7 - Span is subject to exception to minimum clearance space for structural branches around uninsulated LV conductors (Electrical Safety (ELC) Regulations 2020 Part 2.1.7).</p> <p>Tree - ST015262 - has an 860mm Trunk that is 400mm inside clearance.</p>
DEFECTS	No Defect Found
MAINTENANCE	Re-inspection
MAINTENANCE COMMENTS	Annual Reinspection
DUE DATE	15/4/26
COMPLETION DATE	

CONTROLLED COPY NO.:
Revision Number: 1
Issue Date: 28 February 2025

Approved by:
Name: Mark Stoemer
Position: Chief Executive Officer

ELC Exceptions to minimum clearance Part2 Div1

SPAN ID	PL1307430
STREET NUMBER	2
STREET NAME	Gavan Street
SUBURB	Portsea
SITE	2 Gavan Street Portsea
LIS	1307430 – 1307450
INSPECTION DATE	15/04/2025
COMMENTS	<p>7 - Span is subject to exception to minimum clearance space for structural branches around uninsulated LV conductors (Electrical Safety (ELC) Regulations 2020 Part 2.1.7).</p> <p>Tree - ST020659 - has 300mm structural branch within 500mm of clearance.</p>
DEFECTS	No defects found
MAINTENANCE	Re-Inspection
MAINTENANCE COMMENTS	Annual Reinspection
DUE DATE	15-4-26
COMPLETION DATE	

CONTROLLED COPY NO.:
Revision Number: 1
Issue Date: 28 February 2025

Approved by:
Name: Mark Stoemer
Position: Chief Executive Officer

ELC Exceptions to minimum clearance Part2 Div1

SPAN ID	PL1318894
STREET NUMBER	13
STREET NAME	Hiskens street
SUBURB	Sorrento
SITE	16 Hiskens Street Sorrento
LIS	1318894 – 1318893
INSPECTION DATE	15/04/2025
COMMENTS	<p>4 - Span is subject to exception to minimum clearance space for structural branches around insulated low voltage electric cable (Electrical Safety (ELC) Regulations 2020 Part 2.1.4).</p> <p>Tree - ST037383 - has a 1200mm structural trunk within 150mm of clearance.</p>
DEFECTS	No Defect Found
MAINTENANCE	Re-Inspection
MAINTENANCE COMMENTS	Annual Reinspection
DUE DATE	15/4/26
COMPLETION DATE	

CONTROLLED COPY NO.:
Revision Number: 1
Issue Date: 28 February 2025

Approved by:
Name: Mark Stoemer
Position: Chief Executive Officer

ELC Exceptions to minimum clearance Part2 Div1

SPAN ID	PL1316057
STREET NUMBER	15
STREET NAME	Overlea Avenue
SUBURB	Rosebud
SITE	15 Overlea Avenue Rosebud
LIS	1316057 – 1316058
INSPECTION DATE	15/04/2025
COMMENTS	<p>4 - Span is subject to exception to minimum clearance space for structural branches around insulated low voltage electric cable (Electrical Safety (ELC) Regulations 2020 Part 2.1.4).</p> <p>Tree - ST038883 - has 700mm Trunk within 100mm of clearance.</p>
DEFECTS	No defects found
MAINTENANCE	Re-Inspection
MAINTENANCE COMMENTS	Annual Reinspection
DUE DATE	15/4/26
COMPLETION DATE	

CONTROLLED COPY NO.:
Revision Number: 1
Issue Date: 28 February 2025

Approved by:
Name: Mark Stoemer
Position: Chief Executive Officer

ELC Exceptions to minimum clearance Part2 Div1

SPAN ID	PL1315442
STREET NUMBER	34
STREET NAME	Overlea Avenue
SUBURB	Rosebud
SITE	27 Overlea Avenue Rosebud
LIS	1315442 – 1316059
INSPECTION DATE	15/04/2025
COMMENTS	<p>4 - Span is subject to exception to minimum clearance space for structural branches around insulated low voltage electric cable (Electrical Safety (ELC) Regulations 2020 Part 2.1.4).</p> <p>Tree - ST031916 - has 500mm trunk within 100mm of clearance.</p>
DEFECTS	No defects found
MAINTENANCE	Re-Inspection
MAINTENANCE COMMENTS	Annual Reinspection
DUE DATE	15/4/25
COMPLETION DATE	

CONTROLLED COPY NO.:
Revision Number: 1
Issue Date: 28 February 2025

Approved by:
Name: Mark Stoemer
Position: Chief Executive Officer

ELC Exceptions to minimum clearance (Special Circumstance)

SPAN ID	24553062 (Noted in Xugo)
STREET NUMBER	18
STREET NAME	Mt Martha Rd
SUBURB	Mt Martha
SITE	18 Mt Martha Road, Mt Martha
LIS	PL8824821 – PL8824824
INSPECTION DATE	15/04/2025
COMMENTS	<p>Span is subject to a written agreement between Mornington Peninsula Shire and United Energy. Property boundary is in dispute and All Vegetation Clearance for Compliance is the responsibility of United Energy.</p> <p>Tree Number – NA</p> <p>Email attached below.</p>
DEFECTS	No defects found
MAINTENANCE	Re-Inspection
MAINTENANCE COMMENTS	Annual Reinspection
DUE DATE	15/4/25
COMPLETION DATE	

CONTROLLED COPY NO.:
Revision Number: 1
Issue Date: 28 February 2025

Approved by:
Name: Mark Stoemer
Position: Chief Executive Officer

From: Craig, Jason <Jason.Craig@ue.com.au>
Sent: Tuesday, 16 July 2024 11:41 AM
To: Hill, Rick <RHill@powercor.com.au>
Subject: FW: span 24553062 - 18 Mt Martha Rd Mt Martha - palm trees

Hey mate,

I met with council the other week and we discussed this location and the agreement reached between Dean, Cheryl and Leo. It is currently a VP2 and requires cutting.

When this is released we have previously just trimmed the other 2 palms.

The customer is problematic but happier to deal with us than council.

Do we have any idea when we might be releasing this work?

Regards

Jason Craig
Vegetation Stakeholder Improvement Lead

M 0402 386 940
E JCraig@powercor.com.au

From: Dean A. Higgins <dean.higgins@mornpen.vic.gov.au>
Sent: Friday, July 5, 2024 2:14 PM
To: Craig, Jason <Jason.Craig@ue.com.au>
Cc: Birtles, Jen <JBirtles@powercor.com.au>; Samantha Dalla Santa <Samantha.DallaSanta@mornpen.vic.gov.au>; Brad Mason <Brad.Mason@mornpen.vic.gov.au>
Subject: FW: span 24553062 - 18 Mt Martha Rd Mt Martha - palm trees

Hi Jason

Please see below email and attached documents regarding 18 Mt Martha Rd.

Thanks for the catch up and well keep in touch regarding proposed live line work and shutdowns

Cheers

DEAN A. HIGGINS | Arborist
Email: dean.higgins@mornpen.vic.gov.au
Phone: (03) 5950 1325 | 0416 148 725

CONTROLLED COPY NO.:
Revision Number: 1
Issue Date: 28 February 2025

Approved by:
Name: Mark Stoemer
Position: Chief Executive Officer

From: Hourigan, Leo <LHourigan@powercor.com.au>
Sent: Wednesday, 29 November 2023 7:31 AM
To: Xugo Support <Xugosupport@powercor.com.au>
Cc: Kelly, Cheryl <CHkelly@powercor.com.au>; Dean A. Higgins <dean.higgins@mornpen.vic.gov.au>
Subject: FW: span 24553062 - 18 Mt Martha Rd Mt Martha - palm trees

hello Barbara / Yvonne

Just passing on this email for reference, this span has a long history of disputed line clearance responsibility based on the uncertain property boundary which was resolved by EQ Officer Lucas Smith as per email below (Cheryl was also involved coordinating).

Resolution is UE will take responsibility for Code compliance of all the palm trees in span 24553062 (noted in Xugo)

regards

Leo Hourigan | Council Liaison Officer | United Energy

From: Dean A. Higgins <dean.higgins@mornpen.vic.gov.au>
Sent: Friday, 1 September 2023 12:07 PM
To: Hourigan, Leo <LHourigan@powercor.com.au>
Cc: Samantha Dalla Santa <Samantha.DallaSanta@mornpen.vic.gov.au>
Subject: 18 Mt Martha Rd Mt Martha - palm trees

Hi Leo

In relation to 4 Palm trees within the landscaped surrounds at 18 Mt Martha Rd Mt Martha, and our onsite meeting 15th February 2023.

Sam Dalla Santa and Dean Higgins met onsite with the customer Mr Dimaris, Ventia representatives Tim LeSouef and Richard Robertson and United Energy representative Lucas Smith.

Through a robust discussion we discussed the ownership of the Palm Trees and the outcomes required to comply with vegetation clearances to the adjacent Low Voltage powerlines.

It has been established, through the MPS internal surveying team, that two (2) Palm trees are situated on Private property, one (1) Palm tree sits across the title boundary and one (1) Palm tree is situated within the road reserve. Mr Dimaris continues to believe that all 4 Palm Trees are within his private property.

The outcome reached onsite with Mr Dimaris, and in agreeance with UE representative Lucas Smith, is United Energy will move forward and maintain vegetation clearance of all four (4) Palm trees.

Mr Dimaris is happy to move forward and continue communications with United Energy.

If there are any future issues please feel free to call me to discuss.

Regards



DEAN A. HIGGINS | Arborist

Email: dean.higgins@mornpen.vic.gov.au

Phone: 03 5950 1325 | 0416 148 725

Private Bag 1000, Rosebud VIC 3939 | 90 Besgrove Street, Rosebud VIC 3939

Follow us on social media!



CONTROLLED COPY NO.:

Revision Number: 1

Issue Date: 28 February 2025

Approved by:

Name: Mark Stoemer

Position: Chief Executive Officer

Appendix M

Exception to minimum clearance - Tree

Tree Management Report Features and Observations

TREE NUMBER	ST033342
STREET NUMBER	16
STREET NAME	Gerald Street
SUBURB	Tyabb
SITE	16 Gerald Street Tyabb
LOCATION COMMENT	7 - Tree is subject to exception to minimum clearance space for structural branches around uninsulated LV conductors (Electrical Safety (ELC) Regulations 2020 Part 2.1.7) and requires annual inspection. Between PL1 1008105 – PL1 1008106
INSPECTION DATE	15/04/25
BOTANICAL NAME	<i>Angophora costata</i>
COMMON NAME	Smooth Barked Apple Myrtle
HEIGHT	12 - 15m
DIAMETER	70
HEALTH	Good
STRUCTURE	Good
COMMENTS	Mature gum that's has been valley pruned for lines clearing. Minor and major dead wood throughout.
DEFECT	Minor deadwood <150mm
MAINTENANCE	Re-inspection
MAINTENANCE COMMENTS	250mm structural branch within 500mm of clearance.
LIKELIHOOD	D
CONSEQUENCE	3
PRIORITY	Low
DUE DATE	15/04/26
COMPLETION DATE	

CONTROLLED COPY NO.:
Revision Number: 1
Issue Date: 28 February 2025

Approved by:
Name: Mark Stoemer
Position: Chief Executive Officer

Tree Management Report Features and Observations

TREE NUMBER	ST036876
STREET NUMBER	1
STREET NAME	Sefton Court
SUBURB	Hastings
SITE	Corner Villawood Dve
LOCATION COMMENT	7 - Tree is subject to exception to minimum clearance space for structural branches around uninsulated LV conductors (Electrical Safety (ELC) Regulations 2020 Part 2.1.7) and requires annual inspection. Between PL1110425 – PL1110424
INSPECTION DATE	15/04/25
BOTANICAL NAME	<i>Eucalyptus scoparia</i>
COMMON NAME	Wallangarra white Gum
HEIGHT	08 – 10m
DIAMETER	70
HEALTH	Fair
STRUCTURE	Fair
COMMENTS	Asymmetrical canopy Multi stemmed from 3m, history of continuous line clearance pruning, minor epicormic growth emerging along lower sections of lower canopy limb structures,
DEFECT	Minor Dieback <150mm
MAINTENANCE	Re-inspection
MAINTENANCE COMMENTS	300mm structural branch within 500mm of clearance.
LIKELIHOOD	D
CONSEQUENCE	3
PRIORITY	Low
DUE DATE	15/04/26
COMPLETION DATE	

CONTROLLED COPY NO.:
Revision Number: 1
Issue Date: 28 February 2025

Approved by:
Name: Mark Stoemer
Position: Chief Executive Officer

Tree Management Report Features and Observations

TREE NUMBER	ST031987
STREET NUMBER	33
STREET NAME	Villawood Drive
SUBURB	Hastings
SITE	Opposite Jenola Crt,
LOCATION COMMENT	7 - Tree is subject to exception to minimum clearance space for structural branches around uninsulated LV conductors (Electrical Safety (ELC) Regulations 2020 Part 2.1.7) and requires annual inspection. Between PL1110426 – PL1110427
INSPECTION DATE	15/04/25
BOTANICAL NAME	<i>Eucalyptus ovata</i>
COMMON NAME	Swamp Gum
HEIGHT	08 – 10m
DIAMETER	50
HEALTH	Fair-poor
STRUCTURE	Fair-poor
COMMENTS	Multi stemmed form at 2m with crowded primary union, history of continuous line clearance pruning, outward slightly arch main stems extending over roadway/reserve with low branches over mowing area of reserve, minor epicormic growth emerging. Past minor limb failure noted.
DEFECT	No Defect
MAINTENANCE	Re-inspection
MAINTENANCE COMMENTS	300mm structural branch within 500mm of clearance.
LIKELIHOOD	D
CONSEQUENCE	4
PRIORITY	Low
DUE DATE	15-4-26
COMPLETION DATE	

CONTROLLED COPY NO.:
Revision Number: 1
Issue Date: 28 February 2025

Approved by:
Name: Mark Stoemer
Position: Chief Executive Officer

Tree Management Report Features and Observations

TREE NUMBER	ST036380
STREET NUMBER	3
STREET NAME	Wingala Court
SUBURB	Hastings
SITE	3 Wingala Court Hastings
LOCATION COMMENT	7 - Tree is subject to exception to minimum clearance space for structural branches around uninsulated LV conductors (Electrical Safety (ELC) Regulations 2020 Part 2.1.7) and requires annual inspection. Between PL11010448 – PL11010449
INSPECTION DATE	15/04/25
BOTANICAL NAME	<i>Eucalyptus pulchella</i>
COMMON NAME	White Peppermint Gum
HEIGHT	12 – 15m
DIAMETER	80
HEALTH	Good
STRUCTURE	Fair
COMMENTS	Mature gum that's has been pruned heavily or lines clearing. Minor and major dead wood throughout.
DEFECT	Minor deadwood <150mm
MAINTENANCE	Re-inspection
MAINTENANCE COMMENTS	300mm structural branch within 500mm of clearance.
LIKELIHOOD	D
CONSEQUENCE	3
PRIORITY	Low
DUE DATE	15/04/26
COMPLETION DATE	

CONTROLLED COPY NO.:
Revision Number: 1
Issue Date: 28 February 2025

Approved by:
Name: Mark Stoemer
Position: Chief Executive Officer

Tree Management Report Features and Observations

TREE NUMBER	ST014864
STREET NUMBER	12
STREET NAME	Ferguson drive
SUBURB	Balnarring Beach
SITE	9 Ferguson Drive
LOCATION COMMENT	4 - Tree is subject to exception to minimum clearance space for structural branches around insulated LV conductors (Electrical Safety (ELC) Regulations 2020 Part 2.1.4) and requires annual inspection. Between PL1 106708 – PL1 106707
INSPECTION DATE	15/04/25
BOTANICAL NAME	<i>Eucalyptus robusta</i>
COMMON NAME	Mahogany Gum
HEIGHT	12-15m
DIAMETER	60
HEALTH	Fair
STRUCTURE	Fair
COMMENTS	Multi stemmed form with crowded primary union upright form asymmetrical canopy, history of minor pruning away from roadway and service wire. minor epicormic emerging along lower section of main limb structures, small amount of minor deadwood.
DEFECT	No Defect
MAINTENANCE	Re-inspection
MAINTENANCE COMMENTS	300mm Structural branch of Tree 150mm inside clearance.
LIKELIHOOD	D
CONSEQUENCE	3
PRIORITY	Low
DUE DATE	15/4/26
COMPLETION DATE	

CONTROLLED COPY NO.:
Revision Number: 1
Issue Date: 28 February 2025

Approved by:
Name: Mark Stoemer
Position: Chief Executive Officer

Tree Management Report Features and Observations

TREE NUMBER	ST033248
STREET NUMBER	7
STREET NAME	Sydney Street
SUBURB	Balnarring Beach
SITE	6 Sydney Street
LOCATION COMMENT	4 - Tree is subject to exception to minimum clearance space for structural branches around insulated LV conductors (Electrical Safety (ELC) Regulations 2020 Part 2.1.4) and requires annual inspection. Between PL1 106674 – PL1 106675
INSPECTION DATE	15/04/25
BOTANICAL NAME	<i>Eucalyptus botryoides</i>
COMMON NAME	Southern Mahogany Gum
HEIGHT	12 – 15m
DIAMETER	60
HEALTH	Fair
STRUCTURE	Fair
COMMENTS	Codominant stemmed 1.2 metres with adaptive growth, Open branch structure. Service line extending through middle of main canopy. Surface root noted.
DEFECT	No Defect Found
MAINTENANCE	Re-inspection
MAINTENANCE COMMENTS	300mm Structural branch 150mm inside clearance.
LIKELIHOOD	D
CONSEQUENCE	4
PRIORITY	Low
DUE DATE	15/4/26
COMPLETION DATE	

CONTROLLED COPY NO.:
Revision Number: 1
Issue Date: 28 February 2025

Approved by:
Name: Mark Stoemer
Position: Chief Executive Officer

Tree Management Report Features and Observations

TREE NUMBER	ST037443
STREET NUMBER	2
STREET NAME	Johnson Street
SUBURB	Balnarring
SITE	2 Johnson Street
LOCATION COMMENT	7 - Tree is subject to exception to minimum clearance space for structural branches around uninsulated LV conductors (Electrical Safety (ELC) Regulations 2020 Part 2.1.7) and requires annual inspection. Between PL1107814 – PL1107815
INSPECTION DATE	15/04/25
BOTANICAL NAME	<i>Pinus radiata</i>
COMMON NAME	Monterey pine
HEIGHT	15-18m
DIAMETER	141
HEALTH	Fair
STRUCTURE	Fair
COMMENTS	Single stem upright form, asymmetrical canopy, thinning upper canopy, no stem growth on southern side most likely from past pruning away from LV. during is growth period leaving northern canopy structure to mature.
DEFECT	No Defects found
MAINTENANCE	Re-inspection
MAINTENANCE COMMENTS	1400mm Trunk that is 350mm inside clearance.
LIKELIHOOD	D
CONSEQUENCE	3
PRIORITY	Low
DUE DATE	15/4/26
COMPLETION DATE	

CONTROLLED COPY NO.:
Revision Number: 1
Issue Date: 28 February 2025

Approved by:
Name: Mark Stoemer
Position: Chief Executive Officer

Tree Management Report Features and Observations

TREE NUMBER	ST015268
STREET NUMBER	6
STREET NAME	Johnson Street
SUBURB	Balnarring
SITE	7 Johnson Street
LOCATION COMMENT	4 - Tree is subject to exception to minimum clearance space for structural branches around insulated LV conductors (Electrical Safety (ELC) Regulations 2020 Part 2.1.4) and requires annual inspection. Between PL1107815 - PL1107816
INSPECTION DATE	15/04/25
BOTANICAL NAME	<i>Pinus radiata</i>
COMMON NAME	Monterey pine
HEIGHT	22-25m
DIAMETER	128
HEALTH	Fair
STRUCTURE	Fair
COMMENTS	Single stemmed tree with asymmetrical canopy suppressed by neighbouring tree, pocket kino exudation occurring from main trunk at 7 metres, lower minor branch dieback. Minor deadwood, brick letter box located hard up against base,
DEFECT	No Defects found
MAINTENANCE	Re-inspection
MAINTENANCE COMMENTS	1200mm Trunk 150 mm inside clearance.
LIKELIHOOD	D
CONSEQUENCE	3
PRIORITY	Low
DUE DATE	15/4/26
COMPLETION DATE	

CONTROLLED COPY NO.:
Revision Number: 1
Issue Date: 28 February 2025

Approved by:
Name: Mark Stoemer
Position: Chief Executive Officer

Tree Management Report Features and Observations

TREE NUMBER	ST015262
STREET NUMBER	8
STREET NAME	Johnson Street
SUBURB	Balnarring
SITE	8 Johnson Street
LOCATION COMMENT	7 - Tree is subject to exception to minimum clearance space for structural branches around uninsulated LV conductors (Electrical Safety (ELC) Regulations 2020 Part 2.1.7) and requires annual inspection. Between PL1 107816 – PL1 107815
INSPECTION DATE	15/04/2025
BOTANICAL NAME	<i>Pinus radiata</i>
COMMON NAME	Monterey pine
HEIGHT	22-25m
DIAMETER	86
HEALTH	Good
STRUCTURE	Good
COMMENTS	Single stem upright form, asymmetrical canopy, no defects noted, minor limb structures extending over Lv but not impacting LV lines. Minor deadwood,
DEFECT	No Defects found
MAINTENANCE	Re-inspection
MAINTENANCE COMMENTS	860mm Trunk that is 400mm inside clearance.
LIKELIHOOD	D
CONSEQUENCE	3
PRIORITY	Low
DUE DATE	15/4/26
COMPLETION DATE	

CONTROLLED COPY NO.:
Revision Number: 1
Issue Date: 28 February 2025

Approved by:
Name: Mark Stoemer
Position: Chief Executive Officer

Tree Management Report Features and Observations

TREE NUMBER	ST020659
STREET NUMBER	2
STREET NAME	Gavin Street
SUBURB	Portsea
SITE	2 Gavin Street
LOCATION COMMENT	7 - Tree is subject to exception to minimum clearance space for structural branches around uninsulated LV conductors (Electrical Safety (ELC) Regulations 2020 Part 2.1.7) and requires annual inspection. Between PL1307430 – PL1307450
INSPECTION DATE	15/04/25
BOTANICAL NAME	<i>Eucalyptus viminalis</i>
COMMON NAME	Forest Manna Gum
HEIGHT	15 – 18m
DIAMETER	70
HEALTH	Fair
STRUCTURE	Fair
COMMENTS	Mature gum that's has been valley pruned for lines clearing. Minor and major dead wood throughout. Large dead branch over road.
DEFECT	Minor deadwood <150mm
MAINTENANCE	Re-inspection
MAINTENANCE COMMENTS	300mm structural branch within 500mm of clearance.
LIKELIHOOD	D
CONSEQUENCE	3
PRIORITY	Low
DUE DATE	15/4/26
COMPLETION DATE	

CONTROLLED COPY NO.:
Revision Number: 1
Issue Date: 28 February 2025

Approved by:
Name: Mark Stoemer
Position: Chief Executive Officer

Tree Management Report Features and Observations

TREE NUMBER	ST037383
STREET NUMBER	13
STREET NAME	Hiskens Street
SUBURB	Sorrento
SITE	16 Hiskens St
LOCATION COMMENT	4 - Tree is subject to exception to minimum clearance space for structural branches around insulated LV conductors (Electrical Safety (ELC) Regulations 2020 Part 2.1.4) and requires annual inspection. Between PL1318894 – PL1318893.
INSPECTION DATE	15/04/25
BOTANICAL NAME	<i>Eucalyptus globulus ssp globulus</i>
COMMON NAME	Tasmania Blue Gum
HEIGHT	15 – 18m
DIAMETER	108
HEALTH	Fair
STRUCTURE	Fair
COMMENTS	Large mature tree with open spreading canopy. Minor dead wood throughout. Extended branches typical form. Deadwood developing throughout canopy.
DEFECT	Overextended Branches
MAINTENANCE	Re-inspection
MAINTENANCE COMMENTS	1200mm structural trunk within 100mm of clearance.
LIKELIHOOD	D
CONSEQUENCE	3
PRIORITY	Low
DUE DATE	15/04/26
COMPLETION DATE	

CONTROLLED COPY NO.:
Revision Number: 1
Issue Date: 28 February 2025

Approved by:
Name: Mark Stoemer
Position: Chief Executive Officer

Tree Management Report Features and Observations

TREE NUMBER	ST038883
STREET NUMBER	15
STREET NAME	Overlea Avenue
SUBURB	Rosebud
SITE	15 Overlea Avenue Rosebud
LOCATION COMMENT	4 - Tree is subject to exception to minimum clearance space for structural branches around insulated LV conductors (Electrical Safety (ELC) Regulations 2020 Part 2.1.4) and requires annual inspection. Between PL1316057 – PL1316058
INSPECTION DATE	15/04/25
BOTANICAL NAME	<i>Corymbia maculata</i>
COMMON NAME	Spotted Gum
HEIGHT	12 - 15m
DIAMETER	70
HEALTH	Good
STRUCTURE	Good
COMMENTS	Mature gum with open branch structure
DEFECT	Minor deadwood <150mm
MAINTENANCE	Re-inspection
MAINTENANCE COMMENTS	700mm Trunk within 100mm of clearance.
LIKELIHOOD	D
CONSEQUENCE	3
PRIORITY	Low
DUE DATE	15/4/26
COMPLETION DATE	

CONTROLLED COPY NO.:
Revision Number: 1
Issue Date: 28 February 2025

Approved by:
Name: Mark Stoemer
Position: Chief Executive Officer

Tree Management Report Features and Observations

TREE NUMBER	ST031916
STREET NUMBER	27
STREET NAME	Overlea Avenue
SUBURB	Rosebud
SITE	27 Overlea Avenue Rosebud
LOCATION COMMENT	4 - Tree is subject to exception to minimum clearance space for structural branches around insulated LV conductors (Electrical Safety (ELC) Regulations 2020 Part 2.1.4) and requires annual inspection. Between PL1315442 – PL1316059
INSPECTION DATE	15/04/25
BOTANICAL NAME	<i>Corymbia ficifolia</i>
COMMON NAME	Red Flowering Gum
HEIGHT	12 – 15m
DIAMETER	70
HEALTH	Good
STRUCTURE	Good
COMMENTS	Mature gum with open branch structure
DEFECT	Minor deadwood <150mm
MAINTENANCE	Re-inspection
MAINTENANCE COMMENTS	500mm trunk within 100mm of clearance.
LIKELIHOOD	D
CONSEQUENCE	3
PRIORITY	Low
DUE DATE	15/4/26
COMPLETION DATE	

CONTROLLED COPY NO.:
Revision Number: 1
Issue Date: 28 February 2025

Approved by:
Name: Mark Stoemer
Position: Chief Executive Officer