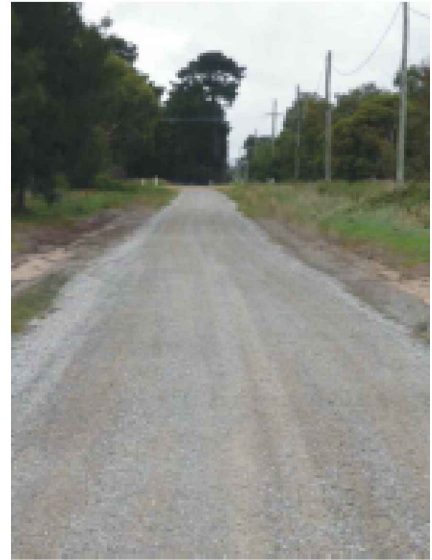
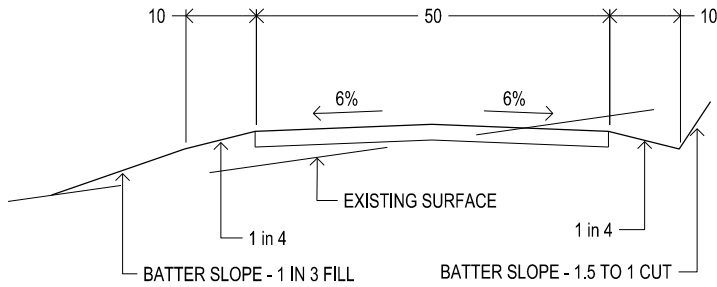
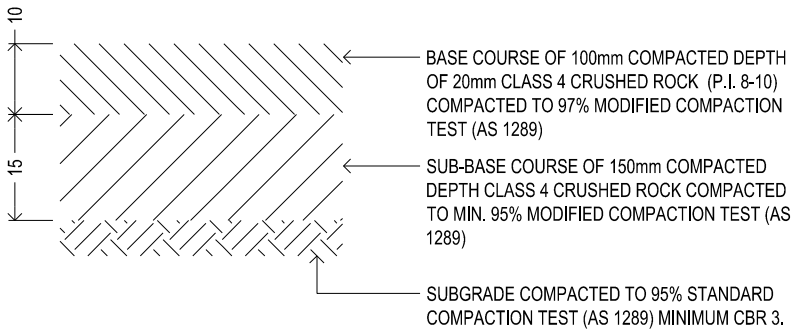


## PAVEMENT SECTION



## PAVEMENT DETAILS



### NOTES

1. THIS STANDARD SHOULD BE USED AS THE MINIMUM CONSTRUCTION STANDARD FOR RURAL ACCESS ROADS. DEVIATION FROM THIS STANDARD MUST BE SUPPORTED BY A PAVEMENT DESIGN PREPARED BY A SUITABLY QUALIFIED GEOTECHNICAL ENGINEER.
2. THIS STANDARD SHOULD BE READ IN CONJUNCTION WITH ;
  - 2.1. THE MORNINGTON PENINSULA SHIRE SPECIFICATION FOR THE CONSTRUCTION OF ROADS AND DRAINS, AND
  - 2.2. THE ARRB UNSEALED ROADS MANUAL - GUIDELINES TO GOOD PRACTICE (2009)
3. PRIOR TO COMMENCING WORKS, CONSENT IS REQUIRED FROM THE SHIRE TO UNDERTAKE WORKS WITHIN A ROAD RESERVE.
4. ALL DIMENSIONS ARE IN MILLIMETERS UNLESS OTHERWISE SHOWN.
5. SUPERELEVATION SHOULD BE PROVIDED ON HORIZONTAL CURVES.
6. THE SUBGRADE SHALL STRIPPED OF ALL TOPSOIL AND VEGETATION.
7. SOFT OR UNSTABLE AREAS IN THE SUBGRADE SHALL BE EXCAVATED AND FILLED WITH AN APPROVED STABLE MATERIAL.
8. ROADSIDE DRAINAGE SHALL BE PROVIDED SUFFICIENT TO PROTECT THE PAVEMENT FROM SURFACE AND SUB-SURFACE STORMWATER FLOW.
9. TABLE DRAINS ON THE LOW SIDE OF THE ROAD SHALL BE DIRECTED TO 'TURN-OFFS'.
10. TABLE DRAINS ON THE HIGH SIDE OF THE ROAD SHALL BE DIRECTED TO APPROPRIATELY DESIGNED AND CONSTRUCTED CULVERT CROSSINGS TO CONVEY STORMWATER TO THE LOW SIDE OF THE ROADWAY.
11. CULVERTS SHALL BE LOCATED TO FOLLOW NATURAL FLOW PATHS.
12. STORMWATER DRAINAGE SHOULD BE DESIGNED IN ACCORDANCE WITH THE VICROADS ROAD DESIGN GUIDELINES, PART 7 - DRAINAGE.
13. COUNCIL MAY AT ITS DISCRETION REQUIRE THAT THE ROAD BE CONSTRUCTED WITH A SEALED SURFACE FOR REASONS OF PUBLIC SAFETY, ENVIRONMENT PROTECTION OR PRESERVATION OF LOCAL AMENITY.



## STANDARD PLAN

### MINIMUM CONSTRUCTION STANDARD FOR RURAL ACCESS ROADS

CERTIFICATION

*[Signature]*  
DEREK RÖTTER - MANAGER PROJECT DELIVERY

DATE OF ISSUE: Sept 2015

SHEET NO.: 1 OF 1

**MP907**