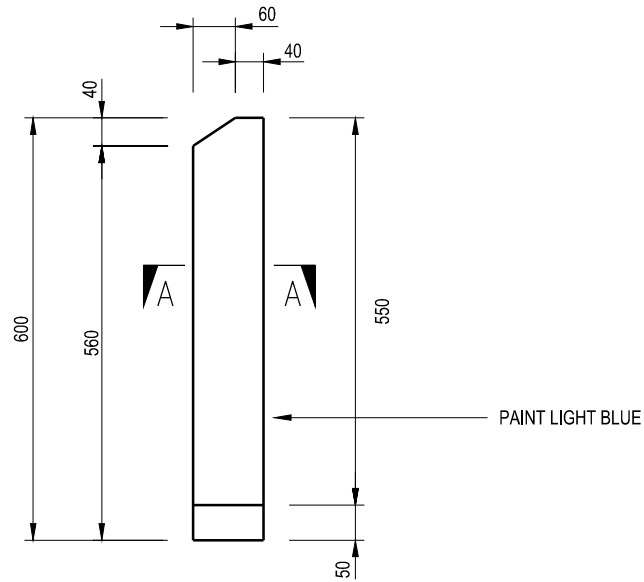
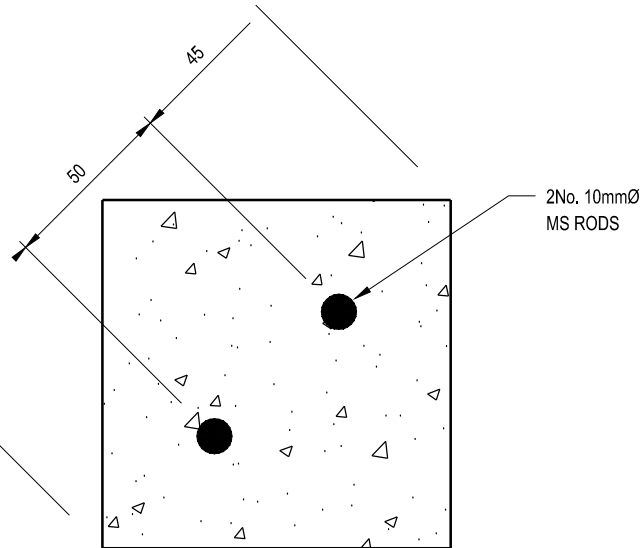


NOTES:

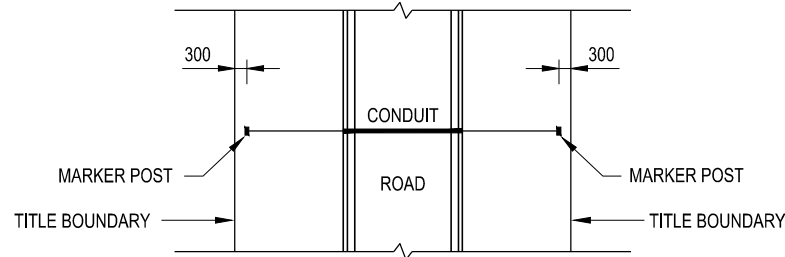
1. CONCRETE POSTS TO BE  $F'c = 25MPa$  AT 28 DAYS MINIMUM COMPRESSIVE STRENGTH.
2. MEASUREMENTS ARE IN MILLIMETRES.



ELEVATION  
SCALE 1:10



SECTION A-A  
SCALE 1:2



PLACEMENT LOCATION  
NOT TO SCALE



STANDARD PLAN  
CONCRETE MARKER POST  
FOR  
SERVICE CONDUITS

CERTIFICATION

*D. Rotter*  
DEREK ROTTER - MANAGER PROJECT DELIVERY

DATE OF ISSUE: Sept 2015

SHEET NO.: 1 OF 1

MP803