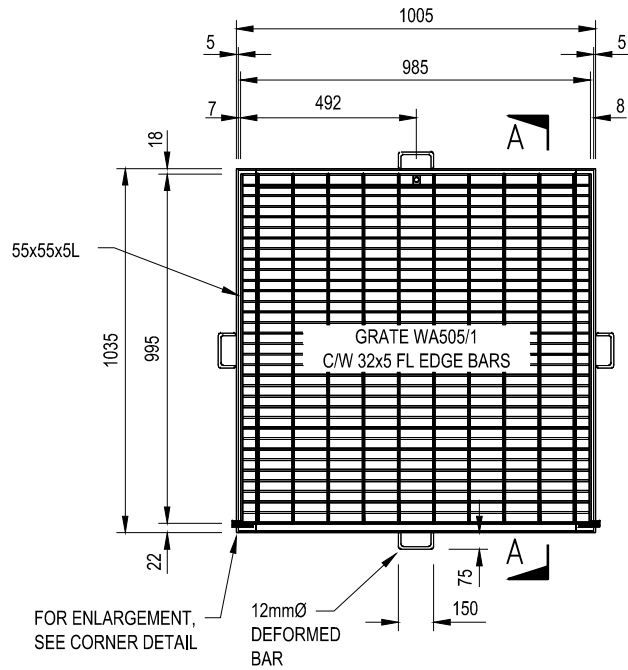
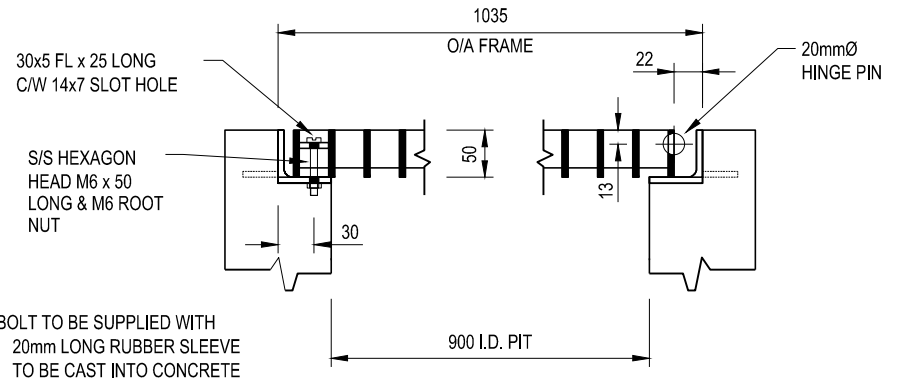
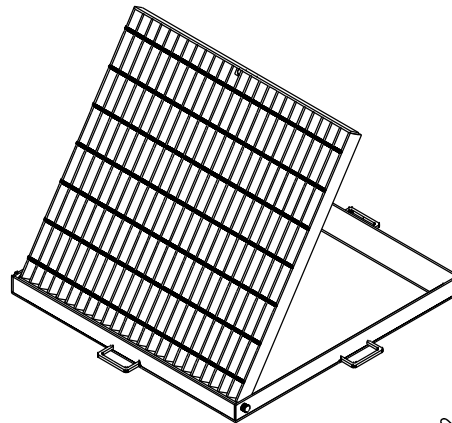


**NOTES:**

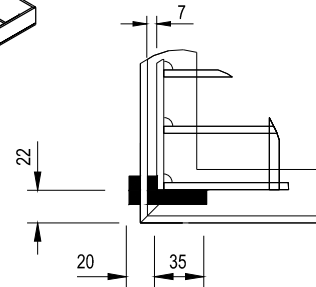
1. FINISH TO BE HOT DIPPED GALVANISED IN ACCORDANCE WITH AS/NZ 4680:1999.
2. WEIGHT:- 95kg.
3. ALL MEASUREMENTS ARE IN MILLIMETRES.
4. GRATE AND FRAME ARE AVAILABLE FROM WEBFORGE (VIC) 81 CHIFLEY DRIVE, BULLEEN, PH. 03 9551 1911 PRODUCT REFERENCE:- MSG99CH.



**GRATE & FRAME**  
SCALE 1:10



**SECTION A-A**  
NOT TO SCALE



**CORNER DETAIL**  
SCALE 1:5



**MORNINGTON  
PENINSULA**  
*Shire*

**STANDARD PLAN**

**BICYCLE PROOF, MEDIUM  
DUTY, HINGED GRATE  
FOR 900 X 600 PIT**

CERTIFICATION

*Derek Rotter*  
DEREK ROTTER - MANAGER PROJECT DELIVERY

DATE OF ISSUE: Sept 2015

SHEET NO.: 1 OF 1

**MP223**